

MISSISSIPPI STATE FIRE ACADEMY

A Division of the Mississippi Insurance Department



FY 2009 ANNUAL REPORT



Mississippi State Fire Academy Advisory Board

President of the
Mississippi Fire Chiefs Association
Chief Kelly Elliott

President of the
Mississippi Fire Fighters Association
Chief Jeff Hale

State Fire Marshal's Office
Chief Deputy Ricky Davis

President of the
Mississippi Association of Supervisors
Mr. Bill Newsom

President of the
Mississippi Municipal Association
Mayor Knox W. Ross, Jr.

Manager of the
State Rating Bureau
Mr. Joe Shumaker



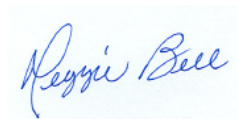
Index

Advisory Board.....	2
Index.....	3
Executive Summary.....	4
From Executive Director Reggie Bell.....	5
Introduction.....	6
Organizational Chart.....	7
State Fire Academy of Mississippi Financial Statement.....	8
Grant Information.....	9
Statistics.....	10
Students Trained by County of Sending Organization.....	11
Certification Bureau.....	12-13
Extension Services Bureau.....	14-15
Special/Industrial Bureau.....	16-17
Other Training & Services.....	18-19
Associate Instructors.....	20
Organizational Affiliates.....	21
FY 2009 Participation Report by Type of Program.....	22-27
FY 2009 Participation Report by Organization.....	28-47



It is with great pleasure that I present to you the 2009 Annual Report of the Mississippi State Fire Academy. Two thousand nine was a tremendous year for the Academy, marked by major accomplishments that promote our commitment to excellence and our dedication to service.

We would like to thank you for your continued support of the fire service in the State of Mississippi and the State Fire Academy as we continue to be one of the nation's most outstanding fire and emergency response training centers.



Executive Director



From Executive Director Reggie Bell

The Mississippi State Fire Academy continues to assist you in all of your fire and emergency response training needs. The Academy is dedicated to providing cutting edge technology training to emergency responders from municipal, volunteer, and industrial fire departments within the state and the world. We currently offer eighty-six courses taught on-campus or in a field delivery format. We utilize twenty-nine full time staff instructors and fifty-seven associate instructors to deliver these courses. For the first time in the history of the Academy, student numbers exceeded 17,000 in FY2009.

During the 2009 session, the legislature and Governor Barbour approved \$1.8 million dollars in general obligation bonds for the purpose of constructing four (4) new, state of the art classrooms on our campus. With these classroom additions, future courses will be developed and delivered. Also, current existing classes can be added to meet the fire service needs. We are also working with congressional members in Washington to secure additional funds to enlarge our on-campus dormitory.

Our goals are to improve the Academy's infrastructure and curriculum to be more conducive to the learning environment. In 2009, the Academy added a trench rescue & emergency shoring training prop, a 2009 custom pumper, and two (2) Katrina Cottages that will be used for code and fire safety training. Development and revisions of current and new programs continue to insure current national standards are met and exceeded. The Academy, having accreditation with 10 standards consisting of 22 levels by the International Fire Service Accreditation Congress (IFSAC), began the process of obtaining accreditation on 11 standards consisting of 25 levels accredited by National Board on Fire Service Professional Qualifications (ProBoard) for dual accreditation. The Academy continues to secure grants on a state and federal level to upgrade our facilities and provide the highest levels of emergency response training available anywhere.

A program that has gained tremendous attention is our Fire Academy for Elected/Public Officials. This program is designed to be a fun day. It familiarizes the elected/public officials with the basic duties and operations of their local fire department. Elected/Public Officials from state, municipal, and county governments have attended this one day course. Fire departments have benefited from the experience gained in this course from their government leaders.

Tours of our training facility have become quite popular with local schools for field trips. We also welcome daycares, senior citizen groups and church groups, as well as both public and private schools. A brief education/information program is included along with the tour of the Academy's 85 acre facility explaining all aspects of fire fighter training. Information and scheduling is provided by the Academy's Public Relations Department. There is no charge for these tours.

**THE BEST FIRE FIGHTERS ARE NOT BORN FIRE FIGHTERS,
THEY'RE TRAINED AT THE MISSISSIPPI FIRE ACADEMY.**



Introduction

Mississippi Code Annotated 1972, Section 45-11-7 (1) creates the State Fire Academy for the purpose of training and education of persons engaged in municipal, county, and industrial fire protection and designates it as a division of the Mississippi Insurance Department. Section 45-11-7 (4) officially designates the Academy as the agency of the state to conduct training for fire personnel on a statewide basis in which members of all duly constituted fire departments may participate. Section 45-11-203 references that the uniform training standards for all paid fire fighters shall consist of the satisfactory completion of a training program administered by the State Fire Academy. Section 83-1-39 requires one member of the sheriff's department be the county fire investigator and to attend training at the State Fire Academy in arson investigation.

Constructed in 1975, the Academy campus is located on approximately 85 acres with nineteen buildings. Student course length varies from one day to six weeks. Students stay on campus in the dormitory, which has seventy-five beds, and are provided two meals a day in the cafeteria. Being a self-contained facility, our staff is responsible for all routine maintenance to the facility grounds, buildings, and repairs to any equipment used for this upkeep and equipment/props used for student training.

The Academy is currently one hundred percent (100%) special funded through a tax of one half of one percent (1/2 of 1%) of the gross premium receipts of fire insurance policies sold in the state, and course collection fees. Personnel Services account for approximately 68% of the overall Academy budget, and that is an area that will continue to grow in order to keep the current level of professional staff for training and to maintain the status as the number one training facility.

The Academy began receiving federal grant funds during fiscal year 2001, and it is anticipated that this funding should continue. The grants are for specialized training in Terrorism Response, Hazardous Materials Incidents, National Incident Management Systems (NIMS) and National Fire Academy courses. The grants are one-hundred percent reimbursable in federal grant or sub-grant funds. Classes are taught on campus or on a request basis at low or no cost to the departments around the state. The Academy continues to secure grants on a state and federal level to upgrade our facilities and provide the highest levels of emergency response training available anywhere.

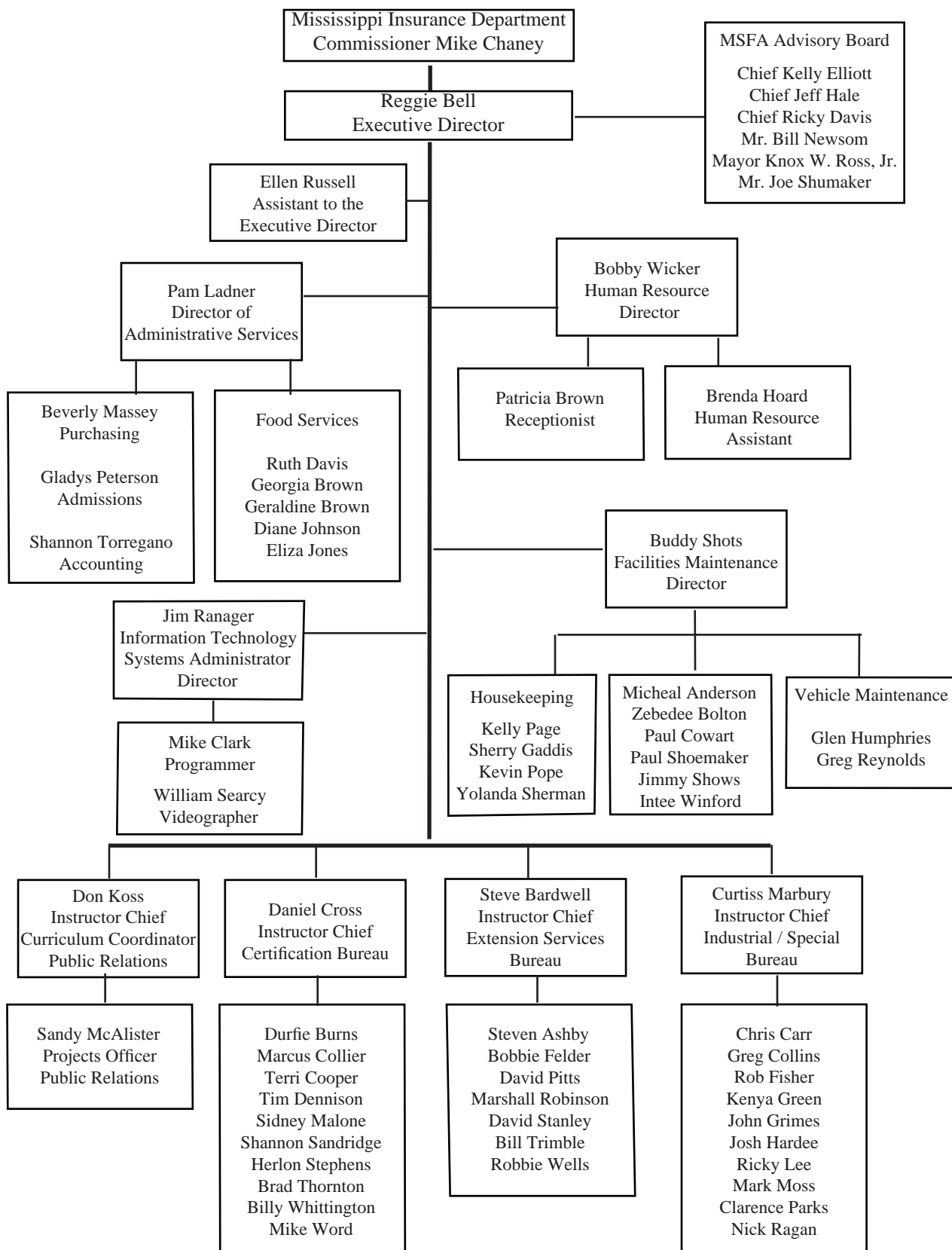
The Academy continues to be one of the nation's most outstanding fire protection training centers and carries out its duties of serving and protecting Mississippians and visitors to our great state with tremendous skill and dedication. The innovative thinking, policy and procedures have resulted in many lives saved and safer communities, serving over 16,000 fire fighters from across the state. Mississippi fire service personnel represent some of the best-trained fire fighters in the nation. The training programs delivered at the Academy are dynamic in nature in order to provide technological support and to meet changing standards for all Mississippi fire fighters.

OUR MISSION IS
“TO SERVE THE MISSISSIPPI FIRE SERVICE COMMUNITY AND THE WORLD
BY PROVIDING QUALITY EDUCATION AND TRAINING IN FUNDAMENTAL AND ADVANCED SKILLS
TO SAVE LIFE AND PROPERTY.”

OUR GOAL IS TO “MAKE A DIFFERENCE!”



Organizational Chart





**State Fire Academy of Mississippi
Fund Balance Financial Statement
July 1, 2008 to June 30, 2009**

Beginning Fund Balance July 1, 2008:	\$2,843,673.56
---	-----------------------

Income/Revenue Collections:

Fire Tax (1/2 of 1% of the gross premium receipts of fire insurance premiums levied)	\$4,039,104.70
Course Fees and Memorabilia Sales	\$1,023,848.87
Donations	\$ 2,150.00
Sub Grant Funds-Passed through other State Agencies	\$ 309,520.83
Federal Grant Funds-Direct	\$ 17,928.89
Other Miscellaneous Income	<u>\$ 12,214.68</u>
TOTAL Income/Revenue Collections:	\$5, 404,767.97

Expenses:

Salaries, Wages, Fringe Benefits	\$3,582,914.87
Travel (In-State)	\$ 28,311.00
Travel (Out-Of-State)	\$ 8,112.38
Contractual Services	\$ 501,657.96
Commodities	\$ 573,356.08
Campus Improvements	\$ 117,370.50
Equipment Purchases	\$ 204,062.19
Apparatus Purchases	\$ 299,980.00
Resale Merchandise	<u>\$ 40,373.46</u>
TOTAL Expenses:	\$5,356,138.44

Ending Fund Balance June 30, 2009:	\$2,892,303.09
---	-----------------------

MS Code Annotated Section 45-11-5:

Creation of a separate account known as the "State Fire Academy Fund" for the deposit of a tax of one-half of one percent (1/2 of 1%) of the gross premium receipts of fire insurance policies levied in the state.

MS Code Annotated Section 45-11-7 (1):

The State Fire Academy was created for the purpose of training and education of persons engaged in municipal, county and industrial fire protection.

The Academy is officially designated as the agency of this state to conduct training for fire personnel on a statewide basis to all duly constituted fire departments.

The Commissioner of Insurance may establish and charge reasonable fees for the training programs and other services provided by the Academy.



Grant Information

The Academy was able to receive grant funds directly from the Federal Emergency Management Agency/National Fire Academy. This grant was utilized to pay for deliveries state wide of programs offered by the National Fire Academy.

Grant Funds Received: \$18,491.31
Deliveries Offered: 10
Students Participating: 141

The Mississippi Office of Homeland Security under the MS Department of Public Safety, awarded grant funds from the State Homeland Security Program. This grant was utilized for on campus and field delivery programs that have been approved through the Office of Domestic Preparedness. Course offerings include Rope Rescue, Confined Space Rescue, Hazardous Materials Awareness/Operations, Hazardous Materials Technician, Trench Rescue, and NIMS courses.

Grant Funds Received: \$160,132.20
Deliveries Offered: 68
Students Participating: 1,329

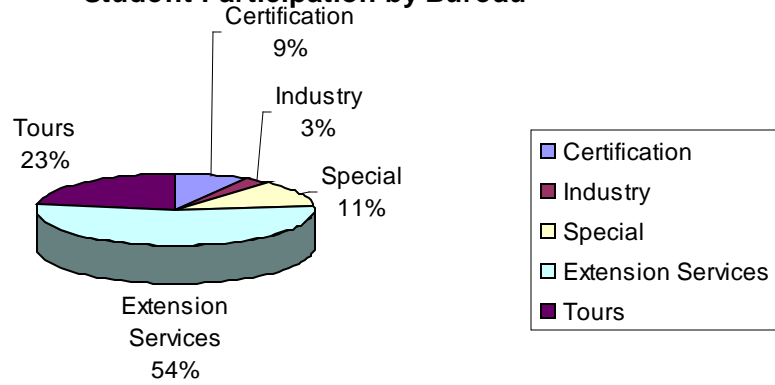
The Mississippi Emergency Management Agency awarded grant funds from the Hazardous Materials Emergency Preparedness, under the U S Department of Transportation. This grant was utilized for the delivery of Hazardous Materials Technician I, Hazardous Materials Technician II, Hazardous Materials Awareness/Operations, and Fire Chemistry.

Grant Funds Received: \$132,261.86
Deliveries Offered: 23
Students Participating: 368

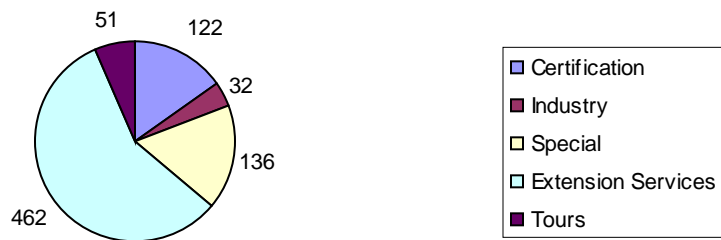
The Mississippi Liquefied Compressed Gas (LCGas) Board of the Mississippi Insurance Department provided PERC grant funds in the amount of \$60,000 toward the purchase of a custom pumper fire apparatus, a 2009 Pierce. The apparatus will be used in training associated with liquefied compressed gas incidents. Additionally, funds were provided for classes statewide to help emergency responders better understand the hazards of LP gases and prepare for the response to uncontrolled release of LP gas or fire.

Grant Funds Received: \$81,014.60 (includes fire apparatus)
Deliveries Offered: 8
Students Participating: 361

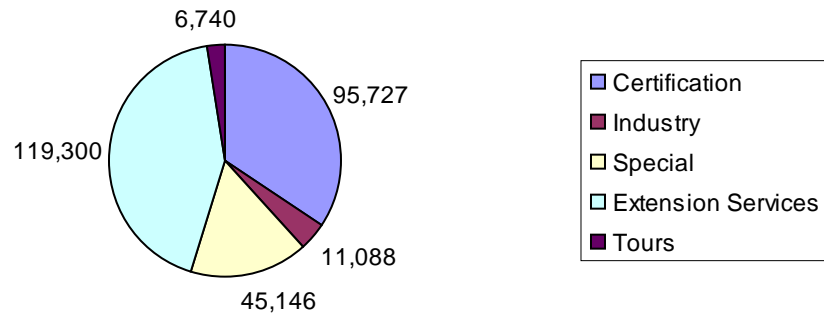
Student Participation by Bureau



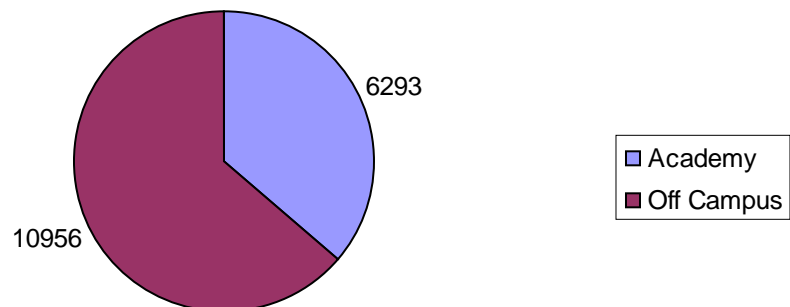
Course Deliveries by Bureau



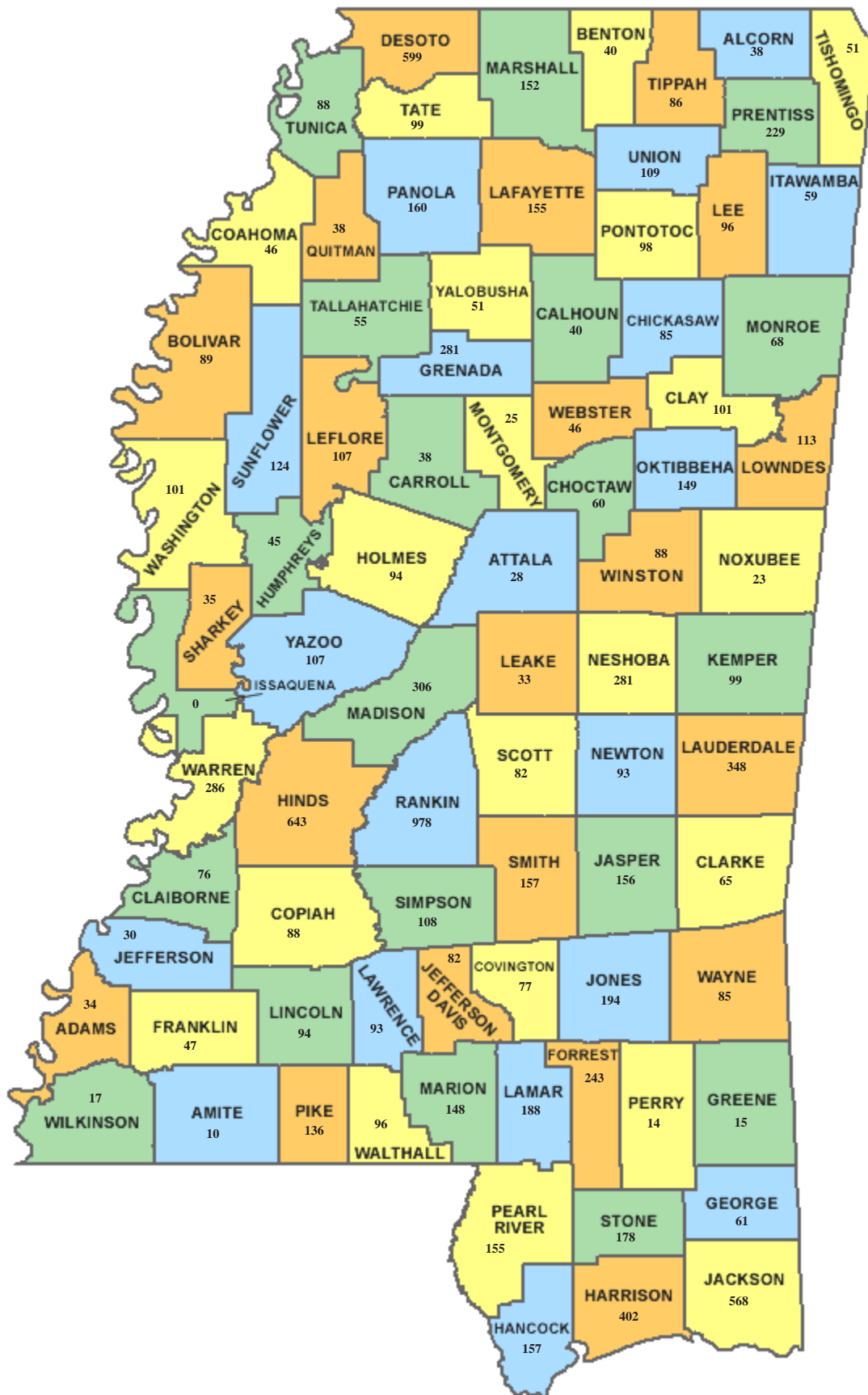
Student Hours by Bureau



Fiscal Year 2009 Students Trained



Students Trained by County of Sending Organization Fiscal Year 2009



A background image showing four firefighters in full protective gear, including helmets and jackets with reflective stripes. They are positioned in front of a large, intense fire. One firefighter on the right is holding a hose that extends across the foreground. The scene is dimly lit, with the primary light source being the fire itself.

CERTIFICATION SERVICES BUREAU

- Courses are designed to provide career, combination, and volunteer fire departments a wide range of programs that conform to National Fire Protection Association (NFPA) standards.
- Most courses have obtained International Fire Service Accreditation Congress (IFSAC) designation.
- Course deliveries consist of campus, field, and contract programs.
- Administers the Candidate Physical Ability Test (CPAT) examination for the Mississippi Fire Personnel Minimum Standards and Certification Board (MSCB).



Candidate Physical Ability Test (CPAT)

Candidate Physical Ability Test (CPAT) Orientation

Emergency Medical Care

Emergency Medical Care: Train-The-Trainer

Fire And Life Safety Educator 1035-I-II-III: Distant Learning

Fire Department Safety Officer 1521

Fire Fighter 1001-I-II

Fire Fighter 1001-I-II: Field Evaluation

Fire Inspector 1031-I

Fire Inspector 1031-II

Fire Investigator 1033

Fire Officer 1021-I-II

Fire Officer 1021-I-II: Field Evaluation

Fire Officer 1021-I-II: Train-The-Trainer

Fire Service Chaplain

Fire Service Instructor 1041-I-II

Fire Service Instructor 1041-III

Fire Service Instructor 1041-I-II: Field Evaluation

Fire Service Instructor: Train-The-Trainer

Fire Service Instructor 1041-I: Distant Learning

How To Develop And Assist In Fire Fighter Physical Fitness Programs

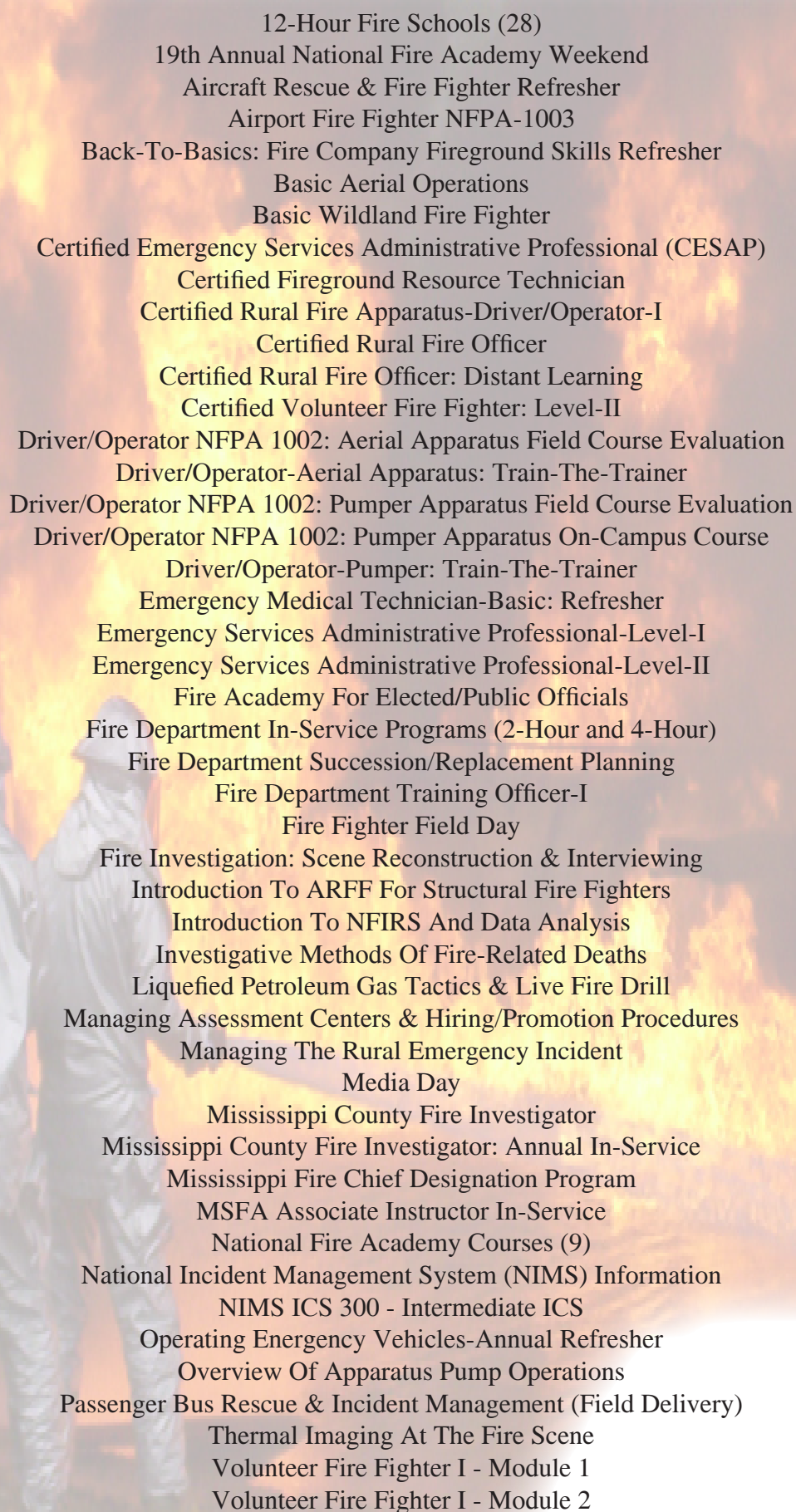
Interior Structural Fire Attack And Rescue

Mississippi Executive Fire Officer Program/Fire Officer 1021-III-IV



EXTENSION SERVICES BUREAU

- Most courses are designed to be presented to the volunteer fire fighter.
- Utilizes a cadre' of associates to present training programs across the state.
- Administers the National Fire Protection Association (NFPA) 1002 Driver/Operator and National Fire Protection Association (NFPA) 1003 Airport Fire Fighter which hold International Fire Service Accreditation Congress (IFSAC) Accreditation.
- Liaison between the Mississippi State Fire Academy and the National Fire Academy.



12-Hour Fire Schools (28)
19th Annual National Fire Academy Weekend
Aircraft Rescue & Fire Fighter Refresher
Airport Fire Fighter NFPA-1003
Back-To-Basics: Fire Company Fireground Skills Refresher
Basic Aerial Operations
Basic Wildland Fire Fighter
Certified Emergency Services Administrative Professional (CESAP)
Certified Fireground Resource Technician
Certified Rural Fire Apparatus-Driver/Operator-I
Certified Rural Fire Officer
Certified Rural Fire Officer: Distant Learning
Certified Volunteer Fire Fighter: Level-II
Driver/Operator NFPA 1002: Aerial Apparatus Field Course Evaluation
Driver/Operator-Aerial Apparatus: Train-The-Trainer
Driver/Operator NFPA 1002: Pumper Apparatus Field Course Evaluation
Driver/Operator NFPA 1002: Pumper Apparatus On-Campus Course
Driver/Operator-Pumper: Train-The-Trainer
Emergency Medical Technician-Basic: Refresher
Emergency Services Administrative Professional-Level-I
Emergency Services Administrative Professional-Level-II
Fire Academy For Elected/Public Officials
Fire Department In-Service Programs (2-Hour and 4-Hour)
Fire Department Succession/Replacement Planning
Fire Department Training Officer-I
Fire Fighter Field Day
Fire Investigation: Scene Reconstruction & Interviewing
Introduction To ARFF For Structural Fire Fighters
Introduction To NFIRS And Data Analysis
Investigative Methods Of Fire-Related Deaths
Liquefied Petroleum Gas Tactics & Live Fire Drill
Managing Assessment Centers & Hiring/Promotion Procedures
Managing The Rural Emergency Incident
Media Day
Mississippi County Fire Investigator
Mississippi County Fire Investigator: Annual In-Service
Mississippi Fire Chief Designation Program
MSFA Associate Instructor In-Service
National Fire Academy Courses (9)
National Incident Management System (NIMS) Information
NIMS ICS 300 - Intermediate ICS
Operating Emergency Vehicles-Annual Refresher
Overview Of Apparatus Pump Operations
Passenger Bus Rescue & Incident Management (Field Delivery)
Thermal Imaging At The Fire Scene
Volunteer Fire Fighter I - Module 1
Volunteer Fire Fighter I - Module 2



SPECIAL/INDUSTRIAL SERVICES BUREAU

- Programs are generally formatted around the subject of industrial incipient firefighting, technical rescue, and hazardous materials response.
- Most special course student fees are supported from federal funding grants.
- Specializes in special technical programs geared towards fire department training.
- Program delivery consists of on-campus and on-site programs.



Certified Advanced Rescue Specialist (CARS)

Confined Space Rescue

Confined Space Rescue: Modules 1-4

Emergency Response To Terrorism: Basic Concepts

Fire Service Management-101

Firefighter Intervention Rescue Survival Techniques (FIRST)

Fireground Leadership

Hazardous Materials For First Responders

Hazardous Materials Technician Field Training

Hazardous Materials Technician-I

Hazardous Materials Technician-II

Hazardous Materials: Operating Site Practices (National Fire Academy)

Incipient And Structural Fire Brigade Training Programs: Modules I-V

Industrial Fire Fighter Refresher Training

Industrial On-Site Training Programs

NFA Chemistry Of Hazardous Materials: Fire Chem I

Rescue Refresher

Rope Rescue I: Modules 1-4

Rope Rescue Technician-I

Rope Rescue Technician-II

Smoke Diver

Trench Rescue & Emergency Shoring

OTHER EXTENSION SERVICES

- Scott SCBA Technician Training - Specialist Level (Module I)
- Scott SCBA Technician Training - Airpack Fifty Technician (Module II)
- Scott SCBA Technician Training - NXG2 (Module III)
- Hale Fire Pump Rebuilding Class

MISSISSIPPI STATE FIRE ACADEMY TOURS



FIRE SAFETY EDUCATION & CAREER DEVELOPMENT



AGE APPROPRIATE PRESENTATIONS FOR ALL SIZE GROUPS





Associate Instructor FY 2009

The Academy contracted with the following individuals for course deliveries during the fiscal year.

Matt Bailey
Jonathan Blakenship
Edwin Blue
Byran Brown
Justin Boulter
James Bunyard
Michelle Crowley
Scott Dubuission
Michael Devore
Mike Doss
Leonard Dover
Andrew Elliott
Lyman Fite
Marc Flanagan
Kendall Golden
William Grantham
Brandon Grissom
Jeffrey Hilliard
Kenneth Holbrook

Charlene Holliman
Cowles Horton
Billy Johnson
Jerry Johnson
Terry Johnson
Carl Kibby
Tom Lariviere
James Littlejohn
Gerald Mabry
Tommy Malone
Mike Marlow
Rob Martin
Jeffrey Mattison
Justin Miller
Craig Nash
Mark Nixon
Daniel Owens
Bruce Page
Robert Parker

Gerald Pickle
Danny Prather
Gilbert Roberts
Michael Rutherford
Kerry Scott
Chris Simpson
Herman Simpson
Darryl Smith
Willis Smith
Joseph Stapleton
Linda Stuckey
Josh Swales
Michael Towne
Karl VanHorn
Tommy Wardlaw
Don Warren
Larry Warrington
Jay Williams
Charles Yarbrough



Organizational Affiliations

Much of the development and improvement of a successful training program comes as the direct result of dialogue established with other persons in the business. The members of the State Fire Academy staff are affiliated with many related organizations and thus have opportunities to share ideas. Following is a list of organizations staff members are involved in.

- International Association of Arson Investigators
- International Association of Fire Chiefs
- International Code Council
- International Fire Service Accreditation Congress (IFSAC)
- Mississippi Association of Governmental Purchasing and Property Agents
- Mississippi Association of Personnel Administrators
- Mississippi Association of Public Fire Safety Educators
- Mississippi Chapter of International Association of Arson Investigators
- Mississippi Fire Chiefs Association
- Mississippi Fire Fighters Association
- Mississippi Fire Service Instructors Association
- Mississippi Society of Certified Public Managers
- National Association of Fire Investigators
- National Fire Protection Association
- North American Fire Training Directors Association



2009 PARTICIPATION REPORT BY TYPE OF PROGRAM

Certification Bureau

Course Name	Student Count
BASIC PUBLIC INFORMATION OFFICER	15
CPAT EXAM	449
CPAT ORIENTATION	9
CPAT TRAIN-THE-TRAINER	6
EMERGENCY MEDICAL CARE	11
EMERGENCY MEDICAL CARE TRAIN-THE-TRAINER	5
FIRE AND LIFE SAFETY EDUCATOR-I-II-III	1
FIRE DEPARTMENT SAFETY OFFICER 1521	51
FIRE DEPARTMENT SAFETY OFFICER STATE CERTIFIED	22
FIRE FIGHTER 1001-I-II	248
FIRE FIGHTER 1001-I-II CHALLENGE	3
FIRE INSPECTOR 1031-1	19
FIRE INSPECTOR 1031-II	28
FIRE INVESTIGATOR 1033	71
FIRE OFFICER 1021-I-II	63
FIRE OFFICER 1021-I-II TRAIN-THE-TRAINER	3
FIRE OFFICER 1021-III-IV	13
FIRE OFFICER I & II STATE CERTIFIED	53
FIRE SERVICE INSTRUCTOR 1041-1	42
FIRE SERVICE INSTRUCTOR 1041-I-II	31
FIRE SERVICE INSTRUCTOR 1041-II	11
FIRE SERVICE INSTRUCTOR 1041-III	29
HAZARDOUS MATERIALS NFPA 472 AWARENESS /OPERATIONS	237
HOW TO DEVELOP/ASSIST IN FF PHYSICAL FITNESS PROGRAMS	12
INTERIOR STRUCTURAL FIRE ATTACK AND RESCUE	16
MS EXECUTIVE FIRE OFFICER 1021-III-IV MODULE 3	13
TEST BANK VALIDATION	6



2009 PARTICIPATION REPORT BY TYPE OF PROGRAM

Extension Services Bureau

Course Name	Student Count
10 COMMANDMENTS OF EFFECTIVE & SAFE FIREGROUND MANAGEMENT	87
AIRCRAFT RESCUE FIRE FIGHTER REFRESHER TRAINING	352
AIRPORT FIRE FIGHTER	56
AND THE BEAT GOES ON	249
APPARATUS OPERATIONS	179
ARSON DETECTION FOR FIRST RESPONDERS	45
AUTOMOBILE EXTRICATION	521
BASIC FIRE COMPANY FIREGROUND SKILLS REFRESHER	40
BASIC FIRE FIGHTER SKILLS REFRESHER COURSE A	193
BASIC FIRE FIGHTER SKILLS REFRESHER COURSE B	15
BASIC FIRE FIGHTER SKILLS REFRESHER COURSE C	44
BASIC RESCUE OPERATIONS	51
CERTIFIED FIREGROUND RESOURCE TECHNICIAN	46
CERTIFIED RURAL FIRE APPARATUS - DRIVER/OPERATOR- I	46
COMMUNITY RISK ISSUES & INJURY PREVENTION INTERVENTION	9
COMPREHENSIVE FIRE PROTECTION IN A COMMERCIAL OCCUPANCY	45
CONFINED SPACE OPERATIONS	73
DEVELOPING & SUSTAINING A WATER SUPPLY	140
DISPATCHER'S ROLE IN A MAY-DAY	50
DRIVER/OPERATOR NFPA 1002: AERIAL APPARATUS	26
DRIVER/OPERATOR NFPA 1002: PUMPER APPARATUS	146
DRIVER/OPERATOR: PUMPER APPARATUS STATE CERTIFIED	3
EVERYDAY FIRE	98
EXECUTIVE SKILL SERIES: INFLUENCING	16
EXECUTIVE SKILL SERIES: LEADING DIVERSE COMMUNITIES BEYOND CONFLICT	10
EXECUTIVE SKILL SERIES: MANAGING & LEADING CHANGE	22
FIRE ACADEMY FOR ELECTED/PUBLIC OFFICIALS	28
FIRE BEHAVIOR IN A SINGLE FAMILY DWELLING	59
FIRE DEPARTMENT SUCCESSION/REPLACEMENT PLANNING	16
FIRE DEPARTMENT TRAINING OFFICER-I	19
FIRE DEPARTMENT TRAINING OFFICER: MANAGING ASSESSMENT CENTERS	7
FIRE FIGHTER FIELD DAY	123
FIRE FIGHTER REFRESHER	54
FIRE FIGHTER SELF RESCUE	82
FIRE INVESTIGATION: SCENE RECONSTRUCTION & INTERVIEWING	11
FIRE MODELING IN A SINGLE FAMILY RESIDENCE	13
FIRE PREVENTION FOR HIGH RISK POPULATIONS	18
FIRE PREVENTION FOR SMALL DEPARTMENTS	32
FIRE SERVICE ETHICS	114
FIRE SERVICE RESCUE 101	266
FIREGROUND SUPPORT OPERATIONS	60
HALE PUMP	22
HAZARDOUS MATERIALS INCIDENT MANAGEMENT	28



2009 PARTICIPATION REPORT BY TYPE OF PROGRAM

Extension Services Bureau (Cont.)

Course Name	Student Count
HAZARDOUS MATERIALS NFPA 472 AWARENESS/OPERATIONS	32
HAZARDOUS MATERIALS: INITIAL RESPONSE	193
HYBRID VEHICLE EMERGENCY RESPONSE	20
INCIDENT COMMAND FOR STRUCTURAL COLLAPSE INCIDENTS	15
INCIDENT SAFETY OFFICER	20
INITIAL CALL TO TERMINATION OF INCIDENT	32
INTENSIVE MARINE PORT AREA COUNTER TERRORISM	7
INTRO TO UNIFIED COMMAND FOR MULTI-AGENCY CATASTROPHIC INCIDENTS	32
INTRODUCTION TO WILDLAND FIREFIGHTING	22
INVESTIGATIVE METHODS OF FIRE RELATED DEATHS	6
IS 100: INTRODUCTION TO ICS	276
IS 200: ICS FOR SINGLE RESOURCE AND INITIAL ACTIONS	264
LEGAL ISSUES FOR FIRE DEPARTMENTS	47
LP GAS TACTICS & LIVE FIRE DRILL: TRAIN-THE-TRAINER	1
LP-GAS TACTICS & LIVE FIRE DRILL	361
MANAGING IN A CHANGING ENVIRONMENT	7
MANAGING THE RURAL EMERGENCY INCIDENT	116
MEDIA DAY	7
MISSISSIPPI COUNTY FIRE INVESTIGATOR	23
MISSISSIPPI COUNTY FIRE/ARSON INVESTIGATOR - ANNUAL IN-SERVICE	30
MISSISSIPPI FIRE FIGHTER SAFETY 2004	46
MISSISSIPPI FIRE FIGHTER SAFETY 2006	23
MSFA ASSOCIATE INSTRUCTOR IN-SERVICE	30
NATIONAL INCIDENT MANAGEMENT SYSTEM-INTRODUCTION	267
NIMS ICS 300 (INTERMEDIATE ICS)	663
NIMS ICS 400 (ADVANCED ICS)	248
NIMS ICS-800: NATIONAL RESPONSE PLAN-INTRODUCTION	22
NIMS INCIDENT COMMAND SYSTEM 300	23
NIMS INCIDENT COMMAND SYSTEM 300 & 400: FACILITATOR	15
NIMS INCIDENT COMMAND SYSTEM 300 - INTERMEDIATE	1
NIMS INCIDENT COMMAND SYSTEM 300:TRAIN-THE-TRAINER	2
NIMS INCIDENT COMMAND SYSTEM 400:TRAIN-THE-TRAINER	6
NIMS INCIDENT COMMAND SYSTEM FOR THE FIRE SERVICE	152
OPERATING EMERGENCY VEHICLES - ANNUAL REFRESHER	17
PASSENGER BUS RESCUE & INCIDENT MANAGEMENT	21
PREPARATIONS FOR INITIAL COMPANY OFFICER	19
PRINCIPLES OF AIRPORT FIREFIGHTING	9
RAPID INTERVENTION TEAMS	186
RESCUE SYSTEMS ONE: LEVEL I	41
RESPONSE TO DRUG LABS, RADIATION, & PESTICIDE EMERGENCY.	127
RESPONSE TO NEW VEHICLE FIRES	103
RURAL FIREFIGHTING: THE WATER SUPPLY CHALLENGE	85
STAFF DEVELOPMENT - NIMS FOR RECRUITS	6



2009 PARTICIPATION REPORT BY TYPE OF PROGRAM

Extension Services Bureau (Cont.)

Course Name	Student Count
STAFF DEVELOPMENT - ORIENTATION FOR OUTSIDE PROPS	6
STATE CERTIFIED VOLUNTEER FIRE FIGHTER: LEVEL I	322
STATE CERTIFIED VOLUNTEER FIRE FIGHTER: LEVEL II	15
STATE VOLUNTEER CERTIFIED LEVEL I CLASSROOM PREP. PROGRAM	331
TELECOMMUNICATOR RESOURCE IN HAZ MAT CRISIS	42
THE FIRE APPARATUS DRIVER	283
TRAINING, RESPONDING AND RETURNING HOME ALIVE	151
VFIS: EMERGENCY VEHICLE DRIVER TRAINING	19
VOLUNTEER FIRE FIGHTER I - MODULE 1	304
VOLUNTEER FIRE FIGHTER I - MODULE 2	92
VOLUNTEER FIRE FIGHTER INSTRUCTOR ORIENTATION	4



2009 PARTICIPATION REPORT BY TYPE OF PROGRAM

Industrial Services Bureau

Course Name	Student Count
BASIC RESCUE	3
CHLOREP TRAINING	115
EMERGENCY RESPONSE TRAINING	46
FIRE & PUMP	18
INDUSTRIAL REFRESHER FIRE FIGHTER TRAINING	322
INDUSTRIAL RESCUE	13
REFRESHER HAZ MAT TRAINING	8
ROPE RESCUE REFRESHER	6



2009 PARTICIPATION REPORT BY TYPE OF PROGRAM

Special Services Bureau

Course Name	Student Count
CERTIFIED ADVANCED RESCUE TECHNICIAN	17
CHEMISTRY OF HAZARDOUS MATERIALS: FIRE CHEM I	22
CHLORINE/COMMUNICATIONS WITH THE MEDIA	80
CONFINED SPACE RESCUE	84
DECONTAMINATION/CHEMICAL PROTECTIVE CLOTHING	80
FIRE SERVICE MANAGEMENT 101	21
FIREFIGHTER INTERVENTION RESCUE SURVIVAL TECHNIQUES	65
FIREGROUND LEADERSHIP	30
HAZARDOUS MATERIALS FOR FIRST RESPONDERS	144
HAZARDOUS MATERIALS TECHNICIAN - I	179
HAZARDOUS MATERIALS TECHNICIAN-II	30
NON-BULK CONTAINERS/HIGHWAY CARRIERS/RAIL CARS	80
RESCUE REFRESHER	19
RESPONDING TO HAZARDOUS MATERIALS INCIDENTS	80
ROPE RESCUE I	107
ROPE RESCUE I - MODULE 1	158
ROPE RESCUE I - MODULE 2	159
ROPE RESCUE I - MODULE 3	158
ROPE RESCUE I - MODULE 4	156
ROPE RESCUE II	79
SMOKE DIVER	51
SOURCES OF ASSISTANCE/HAZ MAT ICS/CHEM. TERMS & DEFINITIONS	81
TOXICOLOGY/MONITORING DEVICES/WEAPONS OF MASS DESTRUCTION	80
TRENCH RESCUE AND EMERGENCY SHORING	35



2009 PARTICIPATION REPORT BY ORGANIZATION

Organization Name	Student Count
73rd CIVIL SUPPORT DETACHMENT	1
ABEL'S STORE VOLUNTEER FIRE DEPARTMENT	4
ABERDEEN FIRE DEPARTMENT	9
ACADIANA REGIONAL AIRPORT	1
ACKERMAN FIRE DEPARTMENT	4
ACONA VOLUNTEER FIRE DEPARTMENT	33
ADAMS COUNTY FIRE COORDINATOR	1
ADAMS COUNTY SHERIFF'S DEPARTMENT	4
ADATON/SELF CREEK FIRE DEPARTMENT	10
AGRICOLA VOLUNTEER FIRE DEPARTMENT	5
ALCORN COUNTY EMA	3
ALCORN COUNTY FIRE COORDINATOR	3
ALGOMA VOLUNTEER FIRE DEPARTMENT	5
ALLEN VOLUNTEER FIRE DEPARTMENT	9
ALPHABA/COCKRUM/INGRAMS FIRE DEPARTMENT	10
ALPINE VOLUNTEER FIRE DEPARTMENT	2
ALTITUDE VOLUNTEER FIRE DEPARTMENT	2
AMACKERTOWN VOLUNTEER FIRE DEPARTMENT	1
AMERICAN MEDICAL RESPONSE/GULFPORT	1
AMORY FIRE DEPARTMENT	26
ANGUILLA VOLUNTEER FIRE DEPARTMENT	1
ARKABUTLA VOLUNTEER FIRE DEPARTMENT	4
ARKEMA	25
ARLINGTON VOLUNTEER FIRE DEPARTMENT/NESHOPA COUNTY	29
ARM VOLUNTEER FIRE DEPARTMENT	1
ASHLAND VOLUNTEER FIRE DEPARTMENT	2
ATTALA COUNTY CENTRAL FIRE DEPARTMENT	27
BAILEY VOLUNTEER FIRE DEPARTMENT	33
BANNER VOLUNTEER FIRE DEPARTMENT/CALHOUN COUNTY	2
BANNER/BOUNDS VOLUNTEER FIRE DEPARTMENT/ITAWAMBA CO.	3
BAPTIST MEMORIAL - PRENTISS COUNTY	8
BAPTIST MEMORIAL - UNION COUNTY	12
BARLOW VOLUNTEER FIRE DEPARTMENT	3
BARNES VOLUNTEER FIRE DEPARTMENT	6
BARTON VOLUNTEER FIRE DEPARTMENT/MARSHALL COUNTY	9
BASSFIELD VOLUNTEER FIRE DEPARTMENT	19
BATESVILLE FIRE DEPARTMENT	86
BAY SPRINGS VOLUNTEER FIRE DEPARTMENT	13
BAY ST. LOUIS FIRE DEPARTMENT	19
BAYSIDE PARK VOLUNTEER FIRE DEPARTMENT	24
BEAVER MEADOWS VOLUNTEER FIRE DEPARTMENT	7
BEAVERDAM VOLUNTEER FIRE DEPARTMENT	5
BECKER-ATHENS VOLUNTEER FIRE DEPARTMENT	14



2009 PARTICIPATION REPORT BY ORGANIZATION (Cont.)

Organization Name	Student Count
BECKHAM VOLUNTEER FIRE DEPARTMENT	9
BELDEN VOLUNTEER FIRE DEPARTMENT	2
BELL SCHOOL HOUSE FIRE DEPARTMENT	3
BELLEFONTAINE VOLUNTEER FIRE DEPARTMENT	4
BELMONT FIRE DEPARTMENT	5
BELZONI FIRE DEPARTMENT	34
BENNDALE VOLUNTEER FIRE DEPARTMENT	4
BENTON COUNTY SHERIFF'S DEPARTMENT	1
BENTON VOLUNTEER FIRE DEPARTMENT	16
BENTONIA VOLUNTEER FIRE DEPARTMENT	23
BETHEDEN VOLUNTEER FIRE DEPARTMENT	20
BETHEL VOLUNTEER FIRE DEPARTMENT	1
BEULAH HUBBARD VOLUNTEER FIRE DEPARTMENT/NEWTON CO.	14
BIG LEVEL VOLUNTEER FIRE DEPARTMENT	23
BIGGERSVILLE VOLUNTEER FIRE DEPARTMENT	1
BILOXI FIRE DEPARTMENT	162
BIRMINGHAM RIDGE FIRE PROTECTION DISTRICT	9
BLACKHAWK VOLUNTEER FIRE DEPARTMENT	5
BLACKLAND VOLUNTEER FIRE DEPARTMENT	7
BLUE MOUNTAIN VOLUNTEER FIRE DEPARTMENT	10
BLYTHEVILLE FIRE DEPARTMENT	20
BOGGY VOLUNTEER FIRE DEPARTMENT	5
BOLIVAR COUNTY FIRE DEPARTMENT	31
BOLTON VOLUNTEER FIRE DEPARTMENT	1
BOONEVILLE FIRE DEPARTMENT	33
BOONEVILLE POLICE DEPARTMENT	38
BOVINA VOLUNTEER FIRE DEPARTMENT	22
BRANDON FIRE DEPARTMENT	116
BRAXTON VOLUNTEER FIRE DEPARTMENT	15
BRIDGETOWN VOLUNTEER FIRE DEPARTMENT	4
BROOKHAVEN FIRE DEPARTMENT	76
BROOKLYN VOLUNTEER FIRE DEPARTMENT	4
BROOKSVILLE VOLUNTEER FIRE DEPARTMENT	8
BRUCE VOLUNTEER FIRE DEPARTMENT	5
BUDE VOLUNTEER FIRE DEPARTMENT	10
BUNKOM HILL/NEW HOPE VOLUNTEER FIRE DEPARTMENT	18
BURTON VOLUNTEER FIRE DEPARTMENT	9
BYHALIA VOLUNTEER FIRE DEPARTMENT	10
BYNUM VOLUNTEER FIRE DEPARTMENT	19
BYRAM VOLUNTEER FIRE DEPARTMENT	18
BYWY VOLUNTEER FIRE DEPARTMENT/CHOCTAW COUNTY	18
CALEDONIA FIRE DEPARTMENT/LOWNDES COUNTY DISTRICT 1	10
CALHOUN CITY VOLUNTEER FIRE DEPARTMENT	15



2009 PARTICIPATION REPORT BY ORGANIZATION (Cont.)

Organization Name	Student Count
CALHOUN COUNTY SHERIFF'S DEPARTMENT	1
CANNONSBURG/CHURCH HILL VOLUNTEER FIRE DEPARTMENT	3
CANTON FIRE DEPARTMENT	69
CANTON-CITY OF	16
CARNES VOLUNTEER FIRE DEPARTMENT	29
CARRIERE VOLUNTEER FIRE DEPARTMENT	19
CARROLL COUNTY BEAT 1 VOLUNTEER FIRE DEPARTMENT	3
CARTHAGE FIRE DEPARTMENT	5
CARY VOLUNTEER FIRE DEPARTMENT	5
CASCILLA VOLUNTEER FIRE DEPARTMENT	2
CASON VOLUNTEER FIRE DEPARTMENT	2
CATO VOLUNTEER FIRE DEPARTMENT	3
CAUSEYVILLE VOLUNTEER FIRE DEPARTMENT	2
CAYCE VOLUNTEER FIRE DEPARTMENT	8
CAYMAN ISLANDS FIRE SERVICE	4
CEDAR CREEK FIRE DEPARTMENT/NOXUBEE COUNTY	1
CEDAR CREEK VOLUNTEER FIRE DEPARTMENT	11
CENTER RIDGE VOLUNTEER FIRE DEPARTMENT	11
CENTRAL CLAY COUNTY/#600 FIRE DEPARTMENT	18
CENTRAL GEORGE COUNTY VOLUNTEER FIRE DEPARTMENT	1
CENTRAL JASPER COUNTY VOLUNTEER FIRE DEPARTMENT	6
CENTRAL LAMAR COUNTY FIRE DEPARTMENT	27
CENTRAL MS CORRECTIONAL FACILITY	23
CENTRAL OKTIBBEHA /LONGVIEW FIRE DEPARTMENT	14
CENTREVILLE VOLUNTEER FIRE DEPARTMENT	4
CHARLESTON VOLUNTEER FIRE DEPARTMENT	3
CHESTER VOLUNTEER FIRE DEPARTMENT	1
CHEVRON U.S.A., INC.	35
CHICKASAW COUNTY SHERIFF'S DEPARTMENT	3
CHICKASAW COUNTY EMERGENCY MANAGEMENT	2
CHLORINE INSTITUTE	115
CHOCTAW COUNTY SHERIFF'S DEPARTMENT	1
CHOCTAW FIRE DEPARTMENT	27
CHOCTAW HEALTH CENTER/MS BAND OF CHOCTAW INDIANS	45
CHUNKY VOLUNTEER FIRE DEPARTMENT	18
CLAIBORNE COUNTY FIRE DEPARTMENT	18
CLARKDALE VOLUNTEER FIRE DEPARTMENT	23
CLARKE COUNTY FIRE COORDINATOR	1
CLARKE COUNTY FIRE SERVICES	1
CLARKSDALE FIRE DEPARTMENT	27
CLARKSON/FAME VOLUNTEER FIRE DEPARTMENT	4
CLAY COUNTY SHERIFF'S DEPARTMENT	1
CLEAR BRANCH VOLUNTEER FIRE DEPARTMENT	5



2009 PARTICIPATION REPORT BY ORGANIZATION (Cont.)

Organization Name	Student Count
CLEAR SPRINGS VOLUNTEER FIRE DEPARTMENT	3
CLEARY VOLUNTEER FIRE DEPARTMENT	4
CLEM VOLUNTEER FIRE DEPARTMENT	3
CLERMONT HARBOR VOLUNTEER FIRE DEPARTMENT	4
CLEVELAND FIRE DEPARTMENT	57
CLEVELAND UNIT FIRE DEPARTMENT/BOLIVAR COUNTY	15
CLINTON FIRE DEPARTMENT	49
COAHOMA COUNTY FIRE DEPARTMENT	8
COAHOMA COUNTY SHERIFF'S DEPARTMENT	1
COLDWATER VOLUNTEER FIRE DEPARTMENT	10
COLES POINT VOLUNTEER FIRE DEPARTMENT	1
COLLINS FIRE DEPARTMENT	40
COLLINSVILLE VOLUNTEER FIRE DEPARTMENT	4
COLUMBIA FIRE DEPARTMENT	2
COLUMBUS FIRE DEPARTMENT	69
COMO VOLUNTEER FIRE DEPARTMENT	1
CONCORDIA FIRE DISTRICT #2	4
COPIAH COUNTY EMERGENCY MANAGEMENT	13
CORINTH FIRE DEPARTMENT	24
COUNTY LINE VOLUNTEER FIRE DEPARTMENT	24
COURTLAND VOLUNTEER FIRE DEPARTMENT	1
CRENSHAW VOLUNTEER FIRE DEPARTMENT	21
CROSBY VOLUNTEER FIRE DEPARTMENT	3
CROSSROADS VOLUNTEER FIRE DEPARTMENT/HINDS COUNTY	8
CROSSROADS VOLUNTEER FIRE DEPARTMENT/PEARL RIVER CO.	5
CROWDER VOLUNTEER FIRE DEPARTMENT	19
CRYSTAL SPRINGS FIRE DEPARTMENT	5
CUEVAS VOLUNTEER FIRE DEPARTMENT	9
CULKIN VOLUNTEER FIRE DEPARTMENT	38
CUMBERLAND VOLUNTEER FIRE DEPARTMENT	2
CURTIS-LOCKE VOLUNTEER FIRE DEPARTMENT	4
D'IBERVILLE FIRE DEPARTMENT	86
DAMASCUS FIRE DEPARTMENT/SW KEMPER COUNTY	1
DECATUR VOLUNTEER FIRE DEPARTMENT	5
DEKALB VOLUNTEER FIRE DEPARTMENT	19
DELPHI PACKARD ELECTRIC SYSTEMS	15
DENTVILLE VOLUNTEER FIRE DEPARTMENT	5
DEPARTMENT OF INSURANCE	2
DERBY-WHITESANDS VOLUNTEER FIRE DEPARTMENT	6
DERMA VOLUNTEER FIRE DEPARTMENT	4
DESOTO COUNTY SHERIFF'S DEPARTMENT	9
DESOTO COUNTY EMERGENCY SERVICES	9
DESOTO VOLUNTEER FIRE DEPARTMENT/CLARKE COUNTY	4



2009 PARTICIPATION REPORT BY ORGANIZATION (Cont.)

Organization Name	Student Count
DIAMONDHEAD FIRE DEPARTMENT	20
DIXIE VOLUNTEER FIRE DEPARTMENT	29
DIXON VOLUNTEER FIRE DEPARTMENT	20
DODGE CITY FIRE DEPARTMENT	4
DORSEY / FRIENDSHIP FIRE DEPARTMENT	4
DOTHAN REGIONAL AIRPORT FIRE DEPARTMENT	8
DREW VOLUNTEER FIRE DEPARTMENT	6
DRY CREEK VOLUNTEER FIRE DEPARTMENT	6
DUBLIN VOLUNTEER FIRE DEPARTMENT	2
DUCK HILL VOLUNTEER FIRE DEPARTMENT	11
DUFFEE VOLUNTEER FIRE DEPARTMENT	1
DUMAS VOLUNTEER FIRE DEPARTMENT	5
DUPONT SPECIALTY CHEMICALS	70
E. CENTRAL VOLUNTEER FIRE DEPARTMENT	9
E. CENTRAL/E. FORK FIRE DEPARTMENT	3
E. COVINGTON VOLUNTEER FIRE DEPARTMENT	7
E. FRANKLIN RURAL FIRE DEPARTMENT	3
E. HARRISON VOLUNTEER FIRE DEPARTMENT	2
E. LINCOLN VOLUNTEER FIRE DEPARTMENT	1
E. NESHOPA VOLUNTEER FIRE DEPARTMENT	15
E. OKTIBBEHA COUNTY FIRE DEPARTMENT	15
E. QUITMAN VOLUNTEER FIRE DEPARTMENT	2
E. UNION VOLUNTEER FIRE DEPARTMENT	7
E. WINSTON COUNTY VOLUNTEER FIRE DEPARTMENT	4
EAGLE LAKE VOLUNTEER FIRE DEPARTMENT	4
ECRU VOLUNTEER FIRE DEPARTMENT	9
EDEN VOLUNTEER FIRE DEPARTMENT	3
EDINBURG VOLUNTEER FIRE DEPARTMENT	7
EKA CHEMICALS, INC.	12
ELLIOTT VOLUNTEER FIRE DEPARTMENT	1
ELLISVILLE FIRE DEPARTMENT	22
ENGLAND AIRPARK FIRE DEPARTMENT	29
ENON VOLUNTEER FIRE DEPARTMENT	56
ENTERPRISE VOLUNTEER FIRE DEPARTMENT	9
ERGON TERMINALING, INC. (TN)	1
ERGON, INC.	3
ESCATAWPA VOLUNTEER FIRE DEPARTMENT	2
ESKAN FIRE DEPARTMENT SAUDI ARABIA	1
EUDORA VOLUNTEER FIRE DEPARTMENT	6
EUPORA VOLUNTEER FIRE DEPARTMENT	11
EVERGREEN FIRE PROTECTION DIST	39
EVERGREEN/-CAROLINA VOLUNTEER FIRE DEPARTMENT	4
FAIRHAVEN VOLUNTEER FIRE DEPARTMENT	10



2009 PARTICIPATION REPORT BY ORGANIZATION (Cont.)

Organization Name	Student Count
FAIRHOPE, AL VOLUNTEER FIRE DEPARTMENT	1
FAIRVIEW VOLUNTEER FIRE DEPARTMENT	1
FALKNER VOLUNTEER FIRE DEPARTMENT	11
FAYETTE VOLUNTEER FIRE DEPARTMENT	2
FELLOWSHIP VOLUNTEER FIRE DEPARTMENT	12
FENTON VOLUNTEER FIRE DEPARTMENT	6
FERNWOOD VOLUNTEER FIRE DEPARTMENT	17
FIREFOX/HINDS COUNTY PENAL FARM	37
FIRST CHEMICAL CORPORATION	33
FISHER FERRY VOLUNTEER FIRE DEPARTMENT	9
FLORA FIRE DEPARTMENT	1
FLORENCE VOLUNTEER FIRE DEPARTMENT	4
FLOWOOD FIRE DEPARTMENT	101
FONTAINEBLEAU VOLUNTEER FIRE DEPARTMENT	26
FOREST FIRE DEPARTMENT	29
FORREST COUNTY FIRE COORDINATOR	1
FORREST COUNTY SHERIFF'S DEPARTMENT	2
FORREST COUNTY EMERGENCY MANAGEMENT	4
FORT BAYOU VOLUNTEER FIRE DEPARTMENT	54
FORT POLK FIRE & EMERGENCY SERVICE	4
FORTS LAKE/FRANKLIN CREEK VOLUNTEER FIRE DEPARTMENT	15
FOXWORTH VOLUNTEER FIRE DEPARTMENT	14
FRANKLIN COUNTY DISTRICT 5 / VOLUNTEER FIRE DEPARTMENT	24
FRANKLIN COUNTY SHERIFF'S DEPARTMENT	1
FRENCH CAMP VOLUNTEER FIRE DEPARTMENT	3
FRIARS POINT VOLUNTEER FIRE DEPARTMENT	4
FRIENDSHIP VOLUNTEER FIRE DEPARTMENT	43
FORT ADAMS VOLUNTEER FIRE DEPARTMENT	3
FULTON FIRE DEPARTMENT	4
GAUTIER FIRE DEPARTMENT	72
GEESLIN CORNER VOLUNTEER FIRE DEPARTMENT	6
GEORGIA GULF	20
GEORGIA PACIFIC LEAF RIVER CELLULOSE FIRE DEPARTMENT	2
GIBBSTOWN / LAWRENCE VOLUNTEER FIRE DEPARTMENT	1
GLADE VOLUNTEER FIRE DEPARTMENT	9
GLEN VOLUNTEER FIRE DEPARTMENT	4
GLUCKSTADT FIRE PROTECTION DISTRICT	23
GOLDEN TRIANGLE REGIONAL AIRPORT/BAPTIST MEMORIAL	1
GOLDEN VOLUNTEER FIRE DEPARTMENT	6
GOOD HOPE VOLUNTEER FIRE DEPARTMENT	8
GOODMAN VOLUNTEER FIRE DEPARTMENT	7
GORE SPRINGS VOLUNTEER FIRE DEPARTMENT	9
GRANBY VOLUNTEER FIRE DEPARTMENT	8



2009 PARTICIPATION REPORT BY ORGANIZATION (Cont.)

Organization Name	Student Count
GRAND GULF NUCLEAR STATION	51
GRAVEL HILL VOLUNTEER FIRE DEPARTMENT	9
GRAVESTOWN VOLUNTEER FIRE DEPARTMENT	5
GREENE COUNTY SHERIFF'S DEPARTMENT	3
GREENE COUNTY/BEAT 4 VOLUNTEER FIRE DEPARTMENT	1
GREENFIELD FIRE DEPARTMENT	2
GREENFIELD VOLUNTEER FIRE DEPARTMENT	3
GREENLEAF VOLUNTEER FIRE DEPARTMENT	1
GREENVILLE FIRE DEPARTMENT	79
GREENWOOD FIRE DEPARTMENT	218
GRENADA FIRE DEPARTMENT	247
GRENADA LAKE MEDICAL CENTER-AMBULANCE SERVICE	1
GULF PARK ESTATES/ST. ANDREWS FIRE DIST	29
GULFPORT FIRE DEPARTMENT	86
H.A.L. VOLUNTEER FIRE DEPARTMENT	9
HANCOCK COUNTY FIRE COORDINATOR	1
HANCOCK COUNTY EMERGENCY MANAGEMENT	2
HARMONY VOLUNTEER FIRE DEPARTMENT	1
HARMONY/CENTRAL VOLUNTEER FIRE DEPARTMENT	2
HARPERVILLE FIRE DEPARTMENT	3
HARRISON COUNTY FIRE SERVICE	17
HARRISON COUNTY CIVIL DEFENSE	5
HARRISVILLE VOLUNTEER FIRE DEPARTMENT	9
HATTIESBURG FIRE DEPARTMENT	76
HATTIESBURG/LAUREL REGIONAL AIRPORT	4
HAZLEHURST FIRE DEPARTMENT	24
HEBRON VOLUNTEER FIRE DEPARTMENT	3
HEIDELBERG VOLUNTEER FIRE DEPARTMENT	3
HENLEYFIELD VOLUNTEER FIRE DEPARTMENT	30
HERNANDO FIRE DEPARTMENT	15
HEUCKS RETREAT VOLUNTEER FIRE DEPARTMENT	1
HICKORY GROVE VOLUNTEER FIRE DEPARTMENT	12
HICKORY VOLUNTEER FIRE DEPARTMENT/NEWTON COUNTY	14
HIGH POINT VOLUNTEER FIRE DEPARTMENT	6
HILLSBORO VOLUNTEER FIRE DEPARTMENT	4
HINDS COUNTY PENAL FARM / FIRE DEPARTMENT-FIRE FOX	29
HINDS COUNTY SHERIFF'S DEPARTMENT	26
HINDS COUNTY EMERGENCY MANAGEMENT	2
HOB0-BIG V VOLUNTEER FIRE DEPARTMENT	6
HOG CHAIN VOLUNTEER FIRE DEPARTMENT	2
HOLCOMB VOLUNTEER FIRE DEPARTMENT	9
HOLLANDALE POLICE DEPARTMENT	3
HOLLANDALE VOLUNTEER FIRE DEPARTMENT	13



2009 PARTICIPATION REPORT BY ORGANIZATION (Cont.)

Organization Name	Student Count
HOLLY BLUFF VOLUNTEER FIRE DEPARTMENT	8
HOLLY SPRINGS FIRE DEPARTMENT	86
HOLMES COUNTY FIRE COORDINATOR	1
HOLTSPUR VOLUNTEER FIRE DEPARTMENT	1
HOMWOOD VOLUNTEER FIRE DEPARTMENT	2
HOPE VOLUNTEER FIRE DEPARTMENT	4
HORN LAKE FIRE DEPARTMENT	36
HOT COFFEE VOLUNTEER FIRE DEPARTMENT	2
HOULKA VOLUNTEER FIRE DEPARTMENT	7
HOUSE VOLUNTEER FIRE DEPARTMENT	11
HOUSTON FIRE DEPARTMENT	15
HOWELL VOLUNTEER FIRE DEPARTMENT	4
HUMPHREYS COUNTY FIRE DEPARTMENT	1
HUMPHREYS COUNTY SHERIFF'S DEPARTMENT	1
HURRICANE VOLUNTEER FIRE DEPARTMENT	5
HIGHWAY 84 WEST VOLUNTEER FIRE DEPARTMENT	7
HYDROVAC INDUSTRIAL SERVICES	5
INDEPENDENCE VOLUNTEER FIRE DEPARTMENT	7
INDIANOLA FIRE DEPARTMENT	67
INDIANOLA-CITY OF	5
INGOMAR VOLUNTEER FIRE DEPARTMENT	15
INGRAM VOLUNTEER FIRE DEPARTMENT	13
INTERNATIONAL PAPER COMPANY-VICKSBURG	22
INVERNESS VOLUNTEER FIRE DEPARTMENT	11
ISOLA VOLUNTEER FIRE DEPARTMENT	1
ITTA BENA VOLUNTEER FIRE DEPARTMENT	15
IUKA FIRE DEPARTMENT	11
JACKSON COUNTY FIRE DISTRICT	111
JACKSON COUNTY FIRE TRAINING OFFICER	1
JACKSON COUNTY SHERIFF'S DEPARTMENT	14
JACKSON COUNTY EMA	2
JACKSON FIRE DEPARTMENT	304
JACKSON POLICE DEPARTMENT	79
JACKSON-CITY OF MAYOR'S OFFICE	16
JACKSON-CITY OF PUBLIC WORKS	4
JANICE VOLUNTEER FIRE DEPARTMENT	2
JASPER COUNTY SHERIFF'S DEPARTMENT	1
JEFF DAVIS COUNTY SHERIFF'S DEPARTMENT	1
JEFFERSON COUNTY FIRE COORDINATOR	1
JEFFERSON DAVIS COUNTY FIRE COORDINATOR	3
JOHNSON VOLUNTEER FIRE DEPARTMENT	2
JONATHAN VOLUNTEER FIRE DEPARTMENT	2
JONESTOWN VOLUNTEER FIRE DEPARTMENT	1



2009 PARTICIPATION REPORT BY ORGANIZATION (Cont.)

Organization Name	Student Count
KEESLER AIR FORCE BASE/81 CES/CEF	4
KEMPER COUNTY DISTRICT 3 VOLUNTEER FIRE DEPARTMENT	3
KEMPER COUNTY FIRE TRAINING OFFICER	9
KEMPER COUNTY SHERIFF'S DEPARTMENT	1
KEMPER SPRINGS VOLUNTEER FIRE DEPARTMENT	1
KILMICHAEL VOLUNTEER FIRE DEPARTMENT	2
KILN VOLUNTEER FIRE DEPARTMENT	16
KINGSTON VOLUNTEER FIRE DEPARTMENT	4
KNOBTOWN VOLUNTEER FIRE DEPARTMENT	2
KOSCIUSKO FIRE DEPARTMENT	1
LAFAYETTE COUNTY CIVIL DEFENSE	3
LAFAYETTE COUNTY FIRE DEPARTMENT	87
LAFAYETTE REGIONAL AIRPORT/RURAL METRO	14
LAKE EDDINS VOLUNTEER FIRE DEPARTMENT	19
LAKE HARBOR VOLUNTEER FIRE DEPARTMENT	71
LAKE MONTROSE VOLUNTEER FIRE DEPARTMENT	2
LAKE VOLUNTEER FIRE DEPARTMENT/SCOTT COUNTY	8
LAMAR COUNTY SHERIFF'S DEPARTMENT	3
LAMAR COUNTY EMA	1
LAMBERT VOLUNTEER FIRE DEPARTMENT	5
LANGFORD VOLUNTEER FIRE DEPARTMENT	49
LATIMER VOLUNTEER FIRE DEPARTMENT	29
LAUDERDALE COUNTY FIRE SERVICES	35
LAUDERDALE COUNTY EMERGENCY MANAGEMENT	35
LAUDERDALE COUNTY FIRE COORDINATOR	1
LAUDERDALE VOLUNTEER FIRE DEPARTMENT	3
LAUREL FIRE DEPARTMENT	74
LAUREL POLICE DEPARTMENT	1
LAWRENCE COUNTY FIRE COORDINATOR	3
LEAKE COUNTY FIRE COORDINATOR	1
LEAKE COUNTY EMA	2
LEARNED VOLUNTEER FIRE DEPARTMENT	6
LEE COUNTY SHERIFF'S DEPARTMENT	1
LEESBURG VOLUNTEER FIRE DEPARTMENT	40
LEETOWN VOLUNTEER FIRE DEPARTMENT	14
LELAND FIRE DEPARTMENT	21
LEMOYNE INDUSTRIAL PARK	43
LENA VOLUNTEER FIRE DEPARTMENT	2
LETOURNEAU COMMUNITY FIRE DEPARTMENT	7
LEWISBURG VOLUNTEER FIRE DEPARTMENT	8
LEXIE VOLUNTEER FIRE DEPARTMENT	2
LEXINGTON VOLUNTEER FIRE DEPARTMENT	14
LIBERTY ROAD VOLUNTEER FIRE DEPARTMENT/ADAMS COUNTY	2



2009 PARTICIPATION REPORT BY ORGANIZATION (Cont.)

Organization Name	Student Count
LIBERTY VOLUNTEER FIRE DEPARTMENT/SCOTT COUNTY	7
LIBERTY VOLUNTEER FIRE DEPARTMENT/AMITE COUNTY	4
LINWOOD VOLUNTEER FIRE DEPARTMENT	2
LIZANA VOLUNTEER FIRE DEPARTMENT	13
LONE STAR VOLUNTEER FIRE DEPARTMENT	2
LONG BEACH FIRE DEPARTMENT	83
LONG BEACH POLICE DEPARTMENT	15
LONG BRANCH VOLUNTEER FIRE DEPARTMENT	18
LONG CREEK VOLUNTEER FIRE DEPARTMENT	15
LONGINO CENTRAL VOLUNTEER FIRE DEPARTMENT	9
LONGTOWN VOLUNTEER FIRE DEPARTMENT	17
LONGVIEW VOLUNTEER FIRE DEPARTMENT	1
LOOP, LLC	12
LOOXAHOMA VOLUNTEER FIRE DEPARTMENT	2
LORMAN VOLUNTEER FIRE DEPARTMENT	5
LOST GAP VOLUNTEER FIRE DEPARTMENT	9
LOUIN VOLUNTEER FIRE DEPARTMENT	17
LOUISE VOLUNTEER FIRE DEPARTMENT	8
LOUISVILLE FIRE DEPARTMENT	32
LOUISVILLE POLICE DEPARTMENT	12
LOVE VOLUNTEER FIRE DEPARTMENT	21
LOWNDES COUNTY DISTRICT 5/ARTESIA FIRE DEPARTMENT	5
LOWNDES COUNTY FIRE SERVICE	16
LOWNDES COUNTY EMA	6
LOYD STAR VOLUNTEER FIRE DEPARTMENT	13
LUCITE INTERNATIONAL	5
LUDLOW VOLUNTEER FIRE DEPARTMENT	11
LUMBERTON VOLUNTEER FIRE DEPARTMENT	28
LYON VOLUNTEER FIRE DEPARTMENT	3
MABEN VOLUNTEER FIRE DEPARTMENT	18
MACEDONIA VOLUNTEER FIRE DEPARTMENT	10
MACON VOLUNTEER FIRE DEPARTMENT	5
MADDEN VOLUNTEER FIRE DEPARTMENT	2
MADISON FIRE DEPARTMENT	89
MADISON POLICE DEPARTMENT	1
MAGEE FIRE DEPARTMENT	29
MAGNOLIA VOLUNTEER FIRE DEPARTMENT	27
MANTACHIE VOLUNTEER FIRE DEPARTMENT	2
MARION COUNTY SHERIFF'S DEPARTMENT	1
MARION VOLUNTEER FIRE & RESCUE	5
MARION/JEFFERSON DAVIS COUNTY CIVIL DEFENSE	1
MARKS VOLUNTEER FIRE DEPARTMENT	8
MARS HILL VOLUNTEER FIRE DEPARTMENT/AMITE COUNTY	2



2009 PARTICIPATION REPORT BY ORGANIZATION (Cont.)

Organization Name	Student Count
MARSHALL COUNTY SHERIFF'S DEPARTMENT	1
MARTIN VOLUNTEER FIRE DEPARTMENT	14
MATHISTON VOLUNTEER FIRE DEPARTMENT	4
MCCOMB FIRE DEPARTMENT	28
MCHENRY VOLUNTEER FIRE DEPARTMENT	31
MCLAURIN VOLUNTEER FIRE DEPARTMENT	5
MCNEILL VOLUNTEER FIRE DEPARTMENT	4
MEADVILLE VOLUNTEER FIRE DEPARTMENT	2
MEEHAN VOLUNTEER FIRE DEPARTMENT	16
MS EMERGENCY MANAGEMENT AGENCY	3
MEMPHIS, TN FIRE DEPARTMENT	3
MENDENHALL VOLUNTEER FIRE DEPARTMENT	26
MERIDIAN FIRE DEPARTMENT	86
MERIDIAN POLICE DEPARTMENT	28
MID-DELTA REGIONAL AIRPORT	8
MIDWAY VOLUNTEER FIRE DEPARTMENT/SCOTT COUNTY	8
MITCHELL VOLUNTEER FIRE DEPARTMENT	7
MIZE VOLUNTEER FIRE DEPARTMENT	36
MOBILE FIRE & RESCUE DEPARTMENT	12
MOBILE FIRE DEPARTMENT	11
MONEY VOLUNTEER FIRE DEPARTMENT	3
MONROE COUNTY SHERIFF'S DEPARTMENT	1
MONROE FIRE DEPARTMENT	23
MONTEREY VOLUNTEER FIRE DEPARTMENT	29
MONTICELLO FIRE DEPARTMENT	35
MONTPELIER VOLUNTEER FIRE DEPARTMENT	32
MONTROSE VOLUNTEER FIRE DEPARTMENT	7
MOOREVILLE VOLUNTEER FIRE DEPARTMENT	6
MOORHEAD VOLUNTEER FIRE DEPARTMENT	3
MORGANTOWN VOLUNTEER FIRE DEPARTMENT	4
MORTON VOLUNTEER FIRE DEPARTMENT	6
MOSELLE VOLUNTEER FIRE DEPARTMENT	6
MOSS POINT FIRE DEPARTMENT	77
MOSSVILLE VOLUNTEER FIRE DEPARTMENT	11
MOTIVO	19
MOUNT OLIVE VOLUNTEER FIRE DEPARTMENT	10
MOUNTAIN CREEK VOLUNTEER FIRE DEPARTMENT	3
MOVELLA VOLUNTEER FIRE DEPARTMENT	3
MS AIR GUARD/MERIDIAN/186 REFUELING GROUP	41
MS ANG/AIRPORT FIRE DEPARTMENT 172ND CES	118
MS DEPARTMENT OF EDUCATION	1
MS DEPARTMENT OF HEALTH	2
MS DEPARTMENT OF MARINE RESOURCES	1



2009 PARTICIPATION REPORT BY ORGANIZATION (Cont.)

Organization Name	Student Count
MS FORESTRY COMMISSION/STONE COUNTY	8
MS FORESTRY COMMISSION/SMITH COUNTY	1
MS GULF COAST COMMUNITY COLLEGE	19
MS STATE PENITENTIARY/PARCHMAN FIRE DEPARTMENT	13
MT PISGAH VOLUNTEER FIRE DEPARTMENT/GREENE COUNTY	1
MT. NEBO FIRE DEPARTMENT/KEMPER COUNTY DISTRICT 5	18
MT. OLIVET VOLUNTEER FIRE DEPARTMENT	14
MT. PISGAH VOLUNTEER FIRE DEPARTMENT/CARROLL COUNTY	2
MT. SALEM VOLUNTEER FIRE DEPARTMENT	9
MURPHREESBORO VOLUNTEER FIRE DEPARTMENT	12
MURPHY OIL, INC	13
MYRICK & MILL CREEK FIRE DEPARTMENT	1
MYRTLE VOLUNTEER FIRE DEPARTMENT	4
N. E. JASPER VOLUNTEER FIRE DEPARTMENT	2
N. E. LAUDERDALE VOLUNTEER FIRE DEPARTMENT	1
N. E. MS COMMUNITY COLLEGE	18
N. BENTON COUNTY VOLUNTEER FIRE DEPARTMENT	14
N. E. CLAY COUNTY/#100 VOLUNTEER FIRE DEPARTMENT	2
N. E. ITAWAMBA/FAIRVIEW FIRE DEPARTMENT	25
N. E. LAMAR VOLUNTEER FIRE DEPARTMENT	16
N. E. PEARL RIVER COUNTY FIRE DEPARTMENT	1
N. E. UNION FIRE DEPARTMENT	1
N. E. WARREN COUNTY VOLUNTEER FIRE DEPARTMENT	2
N. FORREST COUNTY VOLUNTEER FIRE DEPARTMENT	16
N. W. COVINGTON VOLUNTEER FIRE DEPARTMENT	1
N. W. NOXUBEE VOLUNTEER FIRE DEPARTMENT	1
N. W. STONE COUNTY VOLUNTEER FIRE DEPARTMENT	3
NANIH WAIYA VOLUNTEER FIRE DEPARTMENT	12
NAPLES AIRPORT AUTHORITY	10
NATCHEZ FIRE DEPARTMENT	17
NATCHEZ POLICE DEPARTMENT	4
NATCHEZ-ADAMS COUNTY AIRPORT	4
NAVAL AIR STATION/NEW ORLEANS/FIRE DIV C	1
NESBIT VOLUNTEER FIRE DEPARTMENT	9
NESHOBA COUNTY SHERIFF'S DEPARTMENT	1
NESHOBA COUNTY EMA	3
NEW ALBANY FIRE DEPARTMENT	82
NEW AUGUSTA VOLUNTEER FIRE DEPARTMENT	2
NEW HOPE FIRE DEPARTMENT/LOWNDES COUNTY DISTRICT 3	6
NEW SIGHT VOLUNTEER FIRE DEPARTMENT/LINCOLN COUNTY	1
NEW SITE VOLUNTEER FIRE DEPARTMENT/PRENTISS COUNTY	9
NEWTON COUNTY FIRE COORDINATOR	1
NEWTON COUNTY FIRE SERVICES	12



2009 PARTICIPATION REPORT BY ORGANIZATION (Cont.)

Organization Name	Student Count
NEWTON COUNTY SHERIFF'S DEPARTMENT	1
NEWTON COUNTY EMERGENCY MANAGEMENT	5
NEWTON FIRE DEPARTMENT	11
NICHOLSON VOLUNTEER FIRE DEPARTMENT	6
NORTH BEND VOLUNTEER FIRE DEPARTMENT	7
NORTH CENTRAL YAZOO VOLUNTEER FIRE DEPARTMENT	2
NORTH OKALOOSA FIRE DISTRICT	17
NORTH TUNICA COUNTY FIRE PROTECTION DISTRICT	36
NORTHWEST ARKANSAS REGIONAL AIRPORT	2
NOXAPATER VOLUNTEER FIRE DEPARTMENT	2
NOXUBEE COUNTY EMERGENCY MANAGEMENT	2
O'TUCKOLOFA VOLUNTEER FIRE DEPARTMENT	2
OAK BOWERY VOLUNTEER FIRE DEPARTMENT	9
OAK GROVE VOLUNTEER FIRE DEPARTMENT/WALTHALL COUNTY	9
OAK GROVE/BEAT 4 LAMAR COUNTY FIRE DEPARTMENT	13
OAKVALE VOLUNTEER FIRE DEPARTMENT	21
OCEAN SPRINGS FIRE DEPARTMENT	122
OCEAN SPRINGS POLICE DEPARTMENT	1
OFAHOMA VOLUNTEER FIRE DEPARTMENT	2
OKOLONA FIRE DEPARTMENT	9
OKTIBBEHA COUNTY FIRE TRAINING OFFICER	1
OLD PEARL VOLUNTEER FIRE DEPARTMENT	4
OLIVE BRANCH FIRE DEPARTMENT	93
OLOH VOLUNTEER FIRE DEPARTMENT	1
OMA VOLUNTEER FIRE DEPARTMENT	3
OSYKA VOLUNTEER FIRE DEPARTMENT	10
OVETT VOLUNTEER FIRE DEPARTMENT	14
OXFORD FIRE DEPARTMENT	68
PACE VOLUNTEER FIRE DEPARTMENT/BOLIVAR COUNTY	1
PACHUTA VOLUNTEER FIRE DEPARTMENT	6
PADEN VOLUNTEER FIRE DEPARTMENT	9
PALMETTO VOLUNTEER FIRE DEPARTMENT	2
PANOLA COUNTY FIRE COORDINATOR	2
PASCAGOULA FIRE DEPARTMENT	65
PASCAGOULA POLICE DEPARTMENT	4
PASS CHRISTIAN FIRE DEPARTMENT	150
PAULDING VOLUNTEER FIRE DEPARTMENT	13
PAYNES VOLUNTEER FIRE DEPARTMENT	14
PEARL FIRE DEPARTMENT	57
PEARL RIVER COUNTY SHERIFF'S DEPARTMENT	1
PELAHATCHIE POLICE DEPARTMENT	8
PELAHATCHIE VOLUNTEER FIRE DEPARTMENT	80
PELAHATCHIE-TOWN OF	2



2009 PARTICIPATION REPORT BY ORGANIZATION (Cont.)

Organization Name	Student Count
PERKINSTON VOLUNTEER FIRE DEPARTMENT	47
PERRY COUNTY SHERIFF'S DEPARTMENT	5
PETAL FIRE DEPARTMENT	28
PHEBA VOLUNTEER FIRE DEPARTMENT/CLAY COUNTY # 500	3
PHILADELPHIA FIRE DEPARTMENT	63
PICAYUNE FIRE DEPARTMENT	38
PICKENS VOLUNTEER FIRE DEPARTMENT	1
PINE BURR VOLUNTEER FIRE DEPARTMENT	7
PINE GROVE VOLUNTEER FIRE DEPARTMENT	9
PINE RIDGE VOLUNTEER FIRE DEPARTMENT	10
PINE VALLEY VOLUNTEER FIRE DEPARTMENT	3
PINEVILLE VOLUNTEER FIRE DEPARTMENT	7
PINOLA VOLUNTEER FIRE DEPARTMENT	5
PISGAH COMMUNITY FIRE DEPARTMENT	48
PITTSBORO VOLUNTEER FIRE DEPARTMENT	9
PLEASANT GROVE VOLUNTEER FIRE DEPARTMENT/PINOLA CO.	1
PLEASANT RIDGE VOLUNTEER FIRE DEPARTMENT	4
POCAHONTAS VOLUNTEER FIRE DEPARTMENT	32
POLKVILLE VOLUNTEER FIRE DEPARTMENT	3
PONTOTOC FIRE DEPARTMENT	38
POPE VOLUNTEER FIRE DEPARTMENT	20
POPLARVILLE FIRE DEPARTMENT	29
PORT GIBSON VOLUNTEER FIRE DEPARTMENT	7
PORTERVILLE VOLUNTEER FIRE DEPARTMENT	13
POTTS CAMP VOLUNTEER FIRE DEPARTMENT	1
POWERS VOLUNTEER FIRE DEPARTMENT	4
PRAIRIE VOLUNTEER FIRE DEPARTMENT	4
PRENTISS COUNTY EMA	4
PRENTISS COUNTY FIRE TRAINING OFFICER	1
PRENTISS COUNTY SHERIFF'S DEPARTMENT	4
PRENTISS FIRE DEPARTMENT	15
PRENTISS POLICE DEPARTMENT	2
PRESTON FIRE DEPARTMENT/KEMPER COUNTY DISTRICT 4	8
PROGRESS VOLUNTEER FIRE DEPARTMENT/WAYNE COUNTY	1
PROGRESS VOLUNTEER FIRE DEPARTMENT/PIKE COUNTY	4
PUCKETT VOLUNTEER FIRE DEPARTMENT	18
PURVIS VOLUNTEER FIRE DEPARTMENT	1
QUITMAN VOLUNTEER FIRE DEPARTMENT	16
RALEIGH VOLUNTEER FIRE DEPARTMENT	21
RAMSEY SPRINGS VOLUNTEER FIRE DEPARTMENT	2
RANDOLPH VOLUNTEER FIRE DEPARTMENT	8
RANKIN COUNTY EOC	9
RAWLS SPRINGS VOLUNTEER FIRE DEPARTMENT	4



2009 PARTICIPATION REPORT BY ORGANIZATION (Cont.)

Organization Name	Student Count
RAYMOND VOLUNTEER FIRE DEPARTMENT	15
RED HILL VOLUNTEER FIRE DEPARTMENT	2
REDLICK VOLUNTEER FIRE DEPARTMENT	13
REFORM VOLUNTEER FIRE DEPARTMENT/CHOCTAW COUNTY	9
REFORMATION VOLUNTEER FIRE DEPARTMENT/LEAKE COUNTY	4
RESERVOIR FIRE PROTECTION DISTRICT	153
RESERVOIR PATROL	3
RHODES CHAPEL VOLUNTEER FIRE DEPARTMENT	12
RICHLAND FIRE DEPARTMENT	9
RICHMOND VOLUNTEER FIRE DEPARTMENT	8
RICHTON VOLUNTEER FIRE DEPARTMENT	2
RIDGELAND FIRE DEPARTMENT	95
RIPLEY VOLUNTEER FIRE DEPARTMENT	2
RIVERSIDE VOLUNTEER FIRE DISTRICT	1
ROBINHOOD VOLUNTEER FIRE DEPARTMENT	16
ROLLING CREEK VOLUNTEER FIRE DEPARTMENT	2
ROLLING FORK VOLUNTEER FIRE DEPARTMENT	29
ROSE HILL VOLUNTEER FIRE DEPARTMENT	12
ROSEBLOOM VOLUNTEER FIRE DEPARTMENT	1
ROSEBURG FOREST PRODUCTS SLP/TAYLORSVILLE	15
ROXIE VOLUNTEER FIRE DEPARTMENT	7
RULEVILLE VOLUNTEER FIRE DEPARTMENT	1
RUNNELSTOWN VOLUNTEER FIRE DEPARTMENT	1
RURAL HILL VOLUNTEER FIRE DEPARTMENT	1
RURAL/METRO CORPORATION FIRE DEPARTMENT	1
RURAL/METRO FIRE DEPARTMENT/FedEX	14
RUSSELL FIRE & RESCUE	10
RUSTIN VOLUNTEER FIRE DEPARTMENT	12
S. E. CHICKASAW FIRE DEPARTMENT	2
S. E. CLAY COUNTY/#700 FIRE DEPARTMENT	6
S. E. COVINGTON VOLUNTEER FIRE DEPARTMENT	6
S. E. LAMAR VOLUNTEER FIRE DEPARTMENT	33
S. E. UNION FIRE DEPARTMENT	8
S. JONES VOLUNTEER FIRE DEPARTMENT	1
S. LAUDERDALE VOLUNTEER FIRE DEPARTMENT	3
S. LEE COUNTY VOLUNTEER FIRE DEPARTMENT	4
S. W. ALCORN VOLUNTEER FIRE DEPARTMENT	3
S. W. COVINGTON VOLUNTEER FIRE DEPARTMENT	4
S. W. JONES VOLUNTEER FIRE DEPARTMENT	2
S. W. LAMAR VOLUNTEER FIRE DEPARTMENT	24
S. W. MARION VOLUNTEER FIRE DEPARTMENT	30
S. W. NOXUBEE VOLUNTEER FIRE DEPARTMENT	1
SABIC-IP	21



2009 PARTICIPATION REPORT BY ORGANIZATION (Cont.)

Organization Name	Student Count
SALEM VOLUNTEER FIRE DEPARTMENT	1
SALTILLO FIRE DEPARTMENT	5
SAM DALE COMMUNITY VOLUNTEER FIRE DEPARTMENT	1
SANDERSVILLE VOLUNTEER FIRE DEPARTMENT	14
SANFORD VOLUNTEER FIRE DEPARTMENT	2
SARDIS LOWER LAKE FIRE DEPARTMENT	5
SARDIS VOLUNTEER FIRE DEPARTMENT	11
SAUCIER VOLUNTEER FIRE DEPARTMENT	1
SAVANNAH FIRE DEPARTMENT/NOXUBEE COUNTY DISTRICT 2	3
SCHLATER VOLUNTEER FIRE DEPARTMENT	3
SCOOBA VOLUNTEER FIRE DEPARTMENT	9
SCOTT COUNTY SHERIFF'S DEPARTMENT	2
SEBASTOPOL VOLUNTEER FIRE DEPARTMENT	2
SEMINARY VOLUNTEER FIRE DEPARTMENT	3
SENATOBIA FIRE DEPARTMENT	98
SENATOBIA POLICE DEPARTMENT	14
SHADY GROVE VOLUNTEER FIRE DEPARTMENT	3
SHANNON VOLUNTEER FIRE DEPARTMENT	6
SHARKEY HAMPTON VOLUNTEER FIRE DEPARTMENT	7
SHARON VOLUNTEER FIRE DEPARTMENT	9
SHAW FIRE DEPARTMENT/BOLIVAR COUNTY DISTRICT 5	6
SHELL ROAD VOLUNTEER FIRE DEPARTMENT	17
SHERMAN VOLUNTEER FIRE DEPARTMENT	11
SHUQUALAK VOLUNTEER FIRE DEPARTMENT	2
SILVER CREEK VOLUNTEER FIRE DEPARTMENT	7
SILVER RUN VOLUNTEER FIRE DEPARTMENT	18
SIMPSON COUNTY EMERGENCY MANAGEMENT	1
SIMPSON COUNTY FIRE STATION # 7	18
SIMPSON COUNTY SHERIFF'S DEPARTMENT	1
SIMPSON VOLUNTEER FIRE DEPARTMENT	4
SLAYDEN-MT. PLEASANT FIRE DEPARTMENT	2
SLEDGE VOLUNTEER FIRE DEPARTMENT	6
SMITH COUNTY EMA	11
SMITH COUNTY FIRE SERVICES	3
SMITH COUNTY FIRE TRAINING OFFICER	2
SMITH COUNTY SHERIFF'S DEPARTMENT	1
SMITHDALE VOLUNTEER FIRE DEPARTMENT	1
SMYRNA VOLUNTEER FIRE DEPARTMENT	15
SNELL VOLUNTEER FIRE DEPARTMENT	8
SNOW LAKE VOLUNTEER FIRE DEPARTMENT	19
SNOWDOWN/PLEASANT HILL VOLUNTEER FIRE DEPARTMENT	1
SONTAG VOLUNTEER FIRE DEPARTMENT	6
SOSO VOLUNTEER FIRE DEPARTMENT	1



2009 PARTICIPATION REPORT BY ORGANIZATION (Cont.)

Organization Name	Student Count
SOUTH MS CORRECTIONAL FACILITY	6
SOUTH TISHOMINGO VOLUNTEER FIRE DEPARTMENT	2
SOUTHAVEN FIRE DEPARTMENT	316
SOUTHEAST PEARL RIVER VOLUNTEER FIRE DEPARTMENT	8
SPOUT SPRINGS VOLUNTEER FIRE DEPARTMENT	9
SPRING HILL VOLUNTEER FIRE DEPARTMENT/KEMPER COUNTY	7
SPRINGHILL VOLUNTEER FIRE DEPARTMENT/TALLAHATCHIE CO.	5
ST. CROIX, VIRGIN ISLANDS PORT AUTHORITY	17
ST. TAMMANY, LA FIRE DIST #1	15
ST. TAMMANY, LA FIRE DIST. #4	10
ST. THOMAS, VIRGIN ISLANDS PORT AUTHORITY	17
STALLO VOLUNTEER FIRE DEPARTMENT	10
STAMPLEY VOLUNTEER FIRE DEPARTMENT	3
STAR VOLUNTEER FIRE DEPARTMENT	18
STARKVILLE FIRE DEPARTMENT	91
STATE FIRE MARSHAL'S OFFICE	42
STENNIS SPACE CNTR/JOHNSON CONTROLS	28
STONE COUNTY FIRE COORDINATOR	3
STONE COUNTY CIVIL DEFENSE	1
STONEWALL VOLUNTEER FIRE DEPARTMENT	4
STRINGER VOLUNTEER FIRE DEPARTMENT	15
STRONG HOPE VOLUNTEER FIRE DEPARTMENT	7
STURGIS/DIST. 4 VOLUNTEER FIRE DEPARTMENT	5
SUMMERSHILL VOLUNTEER FIRE DEPARTMENT	38
SUMMIT VOLUNTEER FIRE DEPARTMENT	5
SUMRALL VOLUNTEER FIRE DEPARTMENT	7
SUNFLOWER COUNTY FIRE COORDINATOR	1
SUNFLOWER COUNTY EMA	1
SUNFLOWER VOLUNTEER FIRE DEPARTMENT	17
SUNNYHILL VOLUNTEER FIRE DEPARTMENT	9
SUNRISE VOLUNTEER FIRE DEPARTMENT	32
SUQUALENA VOLUNTEER FIRE DEPARTMENT	2
SYLVA RENA VOLUNTEER FIRE DEPARTMENT/YALOBUSHA CO.	1
SYLVARENA VOLUNTEER FIRE DEPARTMENT/SMITH COUNTY	8
TALLADEGA FIRE DEPARTMENT	3
TALLAHATCHIE COUNTY FIRE COORDINATOR	1
TATE COUNTY DISTRICT 1 FIRE DEPARTMENT	7
TATE COUNTY SHERIFF'S DEPARTMENT	1
TAYLORSVILLE POLICE DEPARTMENT	10
TAYLORSVILLE VOLUNTEER FIRE DEPARTMENT	39
TCHULA VOLUNTEER FIRE DEPARTMENT	12
TEASDALE VOLUNTEER FIRE DEPARTMENT	5
TERRY VOLUNTEER FIRE DEPARTMENT	6



2009 PARTICIPATION REPORT BY ORGANIZATION (Cont.)

Organization Name	Student Count
THAXTON VOLUNTEER FIRE DEPARTMENT	4
THEADVILLE VOLUNTEER FIRE DEPARTMENT	6
THORN VOLUNTEER FIRE DEPARTMENT	20
THRASHER VOLUNTEER FIRE DEPARTMENT	3
THREE FORKS FIRE DEPARTMENT	19
THREE MILE CORNER VOLUNTEER FIRE DEPARTMENT	1
THREE RIVERS VOLUNTEER FIRE DEPARTMENT	8
TIBBEE VOLUNTEER FIRE DEPARTMENT/CLAY COUNTY #200	7
TIE PLANT VOLUNTEER FIRE DEPARTMENT	8
TILDEN-NEW SALEM FIRE DEPARTMENT	13
TILLATOBA VOLUNTEER FIRE DEPARTMENT	6
TIPPAH COUNTY FIRE COORDINATOR	1
TIPPAH COUNTY SHERIFF'S DEPARTMENT	4
TISHOMINGO COUNTY FIRE COORDINATOR	1
TISHOMINGO COUNTY CIVIL DEFENSE	4
TISHOMINGO FIRE DEPARTMENT	8
TOCCOPOLA VOLUNTEER FIRE DEPARTMENT	3
TOMNOLEN VOLUNTEER FIRE DEPARTMENT	8
TOOMSUBA VOLUNTEER FIRE DEPARTMENT	2
TOPEKA/DIST 3 VOLUNTEER FIRE DEPARTMENT	1
TREMONT/DIST. 4 VOLUNTEER FIRE DEPARTMENT	4
TRI-COMMUNITY VOLUNTEER FIRE DEPARTMENT/MARION CO.	89
TRI-COMMUNITY VOLUNTEER FIRE DEPARTMENT/YAZOO CO.	8
TROY-WOODLAND VOLUNTEER FIRE DEPARTMENT	5
TUCKER VOLUNTEER FIRE DEPARTMENT	9
TUNICA AIRPORT	7
TUNICA COUNTY SHERIFF'S DEPARTMENT	8
TUNICA VOLUNTEER FIRE DEPARTMENT	33
TUPELO FIRE DEPARTMENT	30
TUSCUMBIA/NEW CHANDLER VOLUNTEER FIRE DEPARTMENT	2
TUTWILER VOLUNTEER FIRE DEPARTMENT	5
TYLERTOWN VOLUNTEER FIRE DEPARTMENT	5
U. S. ENVIRONMENTAL SERVICES	32
UNA VOLUNTEER FIRE DEPARTMENT/CLAY COUNTY # 400	8
UNCODED DEPARTMENT OR INDUSTRY	104
UNION CHURCH VOLUNTEER FIRE DEPARTMENT	3
UNION VOLUNTEER FIRE DEPARTMENT	2
UNION VOLUNTEER FIRE DEPARTMENT	3
UNION VOLUNTEER FIRE DEPARTMENT/JONES COUNTY	7
UNION VOLUNTEER FIRE DEPARTMENT/NEWTON COUNTY	7
UNITY VOLUNTEER FIRE DISTRICT	5
UNIVERSITY OF MS MEDICAL CENTER	1
VAIDEN VOLUNTEER FIRE DEPARTMENT	16



2009 PARTICIPATION REPORT BY ORGANIZATION (Cont.)

Organization Name	Student Count
VALERO ST. CHARLES REFINERY	19
VALLEY GROVE VOLUNTEER FIRE DEPARTMENT	1
VALLEY HILL VOLUNTEER FIRE DEPARTMENT	3
VAN VLEET VOLUNTEER FIRE DEPARTMENT	7
VANCLEAVE VOLUNTEER FIRE DEPARTMENT	5
VARDAMAN VOLUNTEER FIRE DEPARTMENT	4
VAUGHN VOLUNTEER FIRE DEPARTMENT	4
VELMA VOLUNTEER FIRE DEPARTMENT	1
VERONA FIRE DEPARTMENT	18
VICKSBURG FIRE DEPARTMENT	175
VICTORIA FIRE DEPARTMENT	12
VIMVILLE VOLUNTEER FIRE DEPARTMENT	9
WALLS FIRE DEPARTMENT	40
WALNUT GROVE VOLUNTEER FIRE DEPARTMENT	2
WALNUT VOLUNTEER FIRE DEPARTMENT	8
WALTERS VOLUNTEER FIRE DEPARTMENT	22
WALTHALL COUNTY 4TH DIST VOLUNTEER FIRE DEPARTMENT	16
WALTHALL COUNTY SHERIFF'S DEPARTMENT	1
WALTHALL CO/3RD DIST. FIRE DEPARTMENT	7
WALTHALL VOLUNTEER FIRE DEPARTMENT	9
WARD VOLUNTEER FIRE DEPARTMENT	2
WARREN COUNTY EMERGENCY MANAGEMENT	6
WARREN COUNTY FIRE COORDINATOR	1
WASHINGTON COUNTY EMERGENCY MANAGEMENT	1
WASHINGTON COUNTY SHERIFF'S DEPARTMENT	1
WATER VALLEY FIRE DEPARTMENT	15
WATERFORD VOLUNTEER FIRE DEPARTMENT	14
WATSON VOLUNTEER FIRE DEPARTMENT	9
WAVELAND FIRE DEPARTMENT	13
WAYNE COUNTY CENTRAL FIRE STATION	69
WAYNE COUNTY EMERGENCY MANAGEMENT DISTRICT	1
WAYNESBORO FIRE DEPARTMENT	26
WEBSTER COUNTY FIRE COORDINATOR	1
WEBSTER COUNTY FIRE TRAINING OFFICER	2
WEBSTER COUNTY SHERIFF'S DEPARTMENT	1
WEIR VOLUNTEER FIRE DEPARTMENT	18
WESSON VOLUNTEER FIRE DEPARTMENT	7
WEST HANCOCK VOLUNTEER FIRE DEPARTMENT	10
WEST HARRISON VOLUNTEER FIRE DEPARTMENT	2
WEST HINDS VOLUNTEER FIRE DEPARTMENT	3
WEST JACKSON COUNTY VOLUNTEER FIRE DEPARTMENT	32
WEST POINT FIRE DEPARTMENT	42
WEST UNION VOLUNTEER FIRE DEPARTMENT	1



2009 PARTICIPATION REPORT BY ORGANIZATION (Cont.)

Organization Name	Student Count
WEST VOLUNTEER FIRE DEPARTMENT	8
WHEELER VOLUNTEER FIRE DEPARTMENT	6
WHYNOT VOLUNTEER FIRE DEPARTMENT	1
WIGGINS FIRE DEPARTMENT	35
WILKINSON VOLUNTEER FIRE DEPARTMENT	2
WINONA FIRE DEPARTMENT	12
WOODLAND VOLUNTEER FIRE DEPARTMENT	11
WOODVILLE VOLUNTEER FIRE DEPARTMENT	5
WOOLMARKET VOLUNTEER FIRE DEPARTMENT	9
YALOBUSHA COUNTY SHERIFF'S DEPARTMENT	1
YALOBUSHA GENERAL HOSPITAL	19
YAZOO CITY FIRE DEPARTMENT	34
YAZOO COUNTY CIVIL DEFENSE/EMA	8
YAZOO COUNTY FIRE TRAINING OFFICER	1



“Making A Difference!”