

# **FY 2012 ANNUAL REPORT**

## **MISSISSIPPI STATE FIRE ACADEMY**



***A Division Of The Mississippi Insurance Department***



# Mississippi State Fire Academy Advisory Board

President of the  
Mississippi Fire Chiefs Association  
Chief Rob Martin

President of the  
Mississippi Fire Fighters Association  
Mr. Brad Smith

State Fire Marshal's Office  
Chief Deputy Ricky Davis

President of the  
Mississippi Association of Supervisors  
Mr. Charles Selmon

President of the  
Mississippi Municipal Association  
Mayor Nancy Chambers

Manager of the  
State Rating Bureau  
Mr. Joe Shumaker



# Index

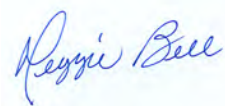
|  |       |
|--|-------|
| Advisory Board.....  | 2     |
| Index.....   | 3     |
| Executive Summary.....                                     | 4     |
| From Executive Director Reggie Bell.....                   | 5     |
| Introduction.....  | 6     |
| Organizational Chart.....                                  | 7     |
| State Fire Academy of Mississippi Financial Statement..... | 8     |
| Grant Information.....                                     | 9     |
| Statistics.....  | 10    |
| Students Trained by County of Sending Organization.....    | 11    |
| Certification Bureau.....                                  | 12-13 |
| Extension Services Bureau.....                             | 14-15 |
| Special/Industrial Bureau.....                             | 16-17 |
| Other Training & Services.....                             | 18-19 |
| Associate Instructors.....                                 | 20    |
| Organizational Affiliates.....                             | 21    |
| FY 2011 Participation Report by Type of Program.....       | 22-27 |
| FY 2011 Participation Report by Organization.....          | 28-47 |





It is with great pleasure that I present to you the 2012 Annual Report of the Mississippi State Fire Academy. Two thousand twelve was a tremendous year for the Academy, marked by major accomplishments that promote our commitment to excellence and our dedication to service.

We would like to thank you for your continued support of the fire service in the State of Mississippi and the State Fire Academy as we continue to be one of the nation's best fire and emergency response training centers.



Executive Director



## From Executive Director Reggie Bell

The Mississippi State Fire Academy endeavors to serve Mississippi, the nation, and the world, by consistently providing the best in training for fire service and emergency response personnel. Our abilities to do so have been enhanced in the past year by the completion of additional classrooms and the installation of a computer lab/Learning Resource Center. We offer courses both on the Academy's grounds and off-campus in all 82 counties in the state. Off-campus courses provide more fire fighters the opportunity to engage in critical training, by allowing the fire fighters to participate in classes closer to their communities, and therefore reduce the time they spend away from their departments.

The Mississippi State Fire Academy also continues its effort to remain at the forefront of technological advancement. Classrooms and other facilities on campus are equipped with wireless Internet, webcasting, and teleconferencing capabilities. These assets provide us the flexibility to innovate our instruction methods and course delivery platforms as the needs of the students, and the departments and communities they serve, change.

In addition to training those who seek careers in fire fighting and emergency response, we consider it a vital part of our mission to educate ordinary Mississippi citizens about fire prevention and safety. To that end, we offer schools, clubs, and civic groups the opportunity to visit our campus, tour the facilities, and learn how they can help minimize the potential for loss of life and property due to fire. There is no charge for these tours.

A program that has gained tremendous attention is our Fire Academy for Elected/Public Officials. This program is designed to be a fun day. It familiarizes the elected/public officials with the basic duties and operations of their local fire departments. Elected/public officials from state, municipal, and county governments have attended this one-day course. Fire departments have benefited from the experience and knowledge their government leaders gain in this course.

Although the Mississippi State Fire Academy has much to be proud of, our top priority is always education and training for fire services and emergency personnel.

**"MAKING A DIFFERENCE WHEN IT MATTERS THE MOST"**



## Introduction

Mississippi Code Annotated 1972, Section 45-11-7 (1) creates the State Fire Academy for the purpose of training and education of persons engaged in municipal, county, and industrial fire protection and designates it as a division of the Mississippi Insurance Department. Section 45-11-7 (4) officially designates the Academy as the agency of the state to conduct training for fire personnel on a statewide basis in which members of all duly constituted fire departments may participate. Section 45-11-203 states that the uniform training standards for all paid fire fighters shall consist of the satisfactory completion of a training program administered by the State Fire Academy. Section 83-1-39 requires one member of the sheriff's department be the county fire investigator and to attend training at the State Fire Academy in arson investigation.

Constructed in 1975, the Academy campus is located on approximately 85 acres with nineteen buildings. Student course length varies from one day to six weeks. Students stay on campus in the dormitory, which has seventy-five beds, and are provided two meals a day in the cafeteria. Being a self-contained facility, our staff is responsible for all routine maintenance to the facility grounds, buildings, vehicles, and repairs to any equipment used for this upkeep and equipment/props used for student training.

The Academy is currently one hundred percent (100%) special funded through a tax of one half of one percent (1/2 of 1%) of the gross premium receipts of fire insurance policies sold in the state, and course collection fees. Personnel services account for approximately 68% of the overall Academy budget, and that is an area that will continue to grow in order to keep the current level of professional staff for training and to maintain the status as the number one training facility.

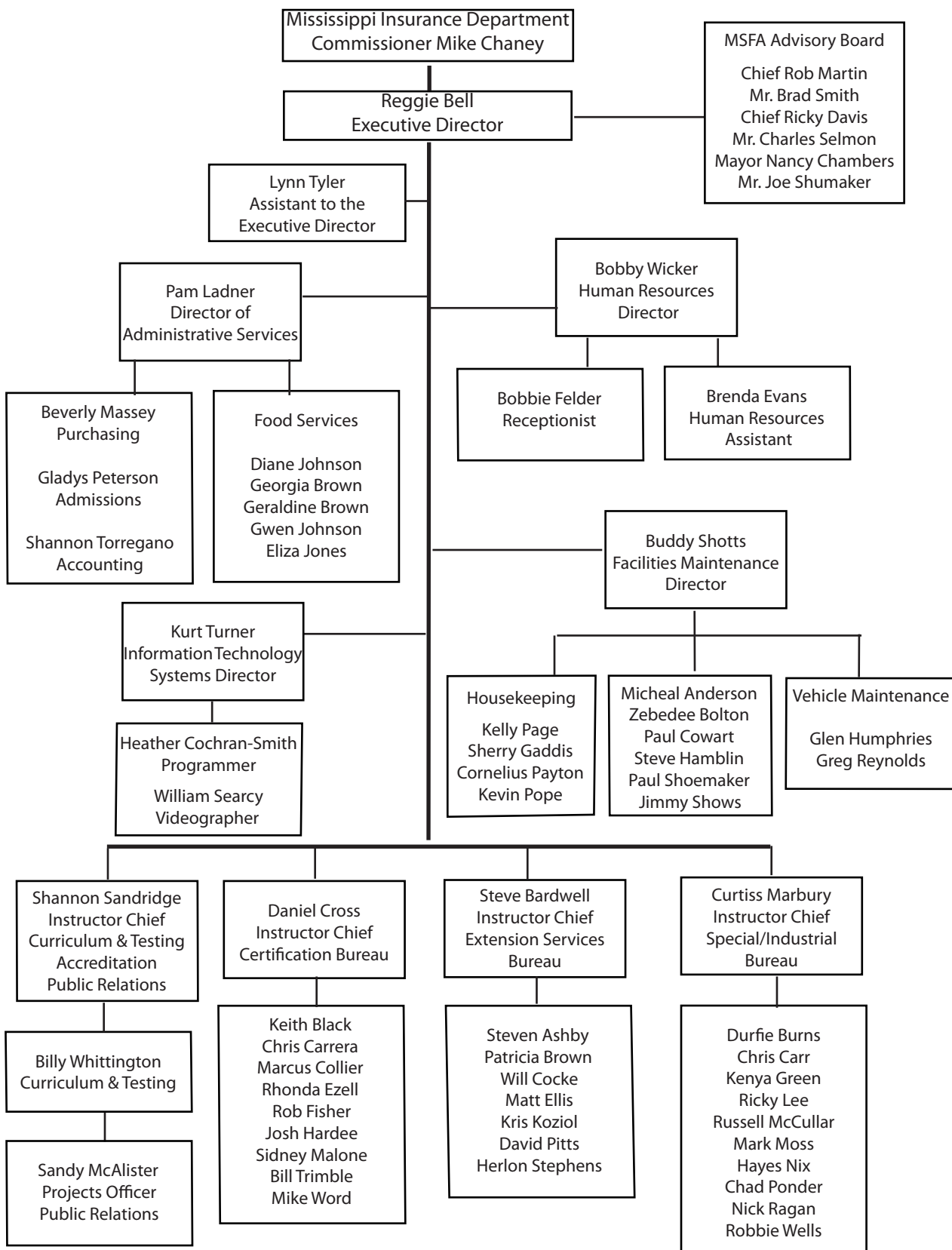
The Academy began receiving federal grant funds during fiscal year 2001, and it is anticipated that this funding should continue. The grants are for specialized training in Terrorism Response, Hazardous Materials Incidents, National Incident Management Systems (NIMS) and National Fire Academy courses. The grants are one-hundred percent reimbursable in federal grant or sub-grant funds. Classes are taught on and off campus on a request basis at low or no cost to the departments around the state. The Academy continues to secure grants on a state and federal level to upgrade our facilities and provide the highest levels of emergency response training available anywhere.

The Academy continues to be one of the nation's most outstanding fire protection training centers and carries out its duties of serving and protecting Mississippians and visitors to our great state with tremendous skill and dedication. The innovative thinking, policy and procedures have resulted in many lives saved and safer communities, serving over 16,000 fire fighters from across the state. Mississippi fire service personnel represent some of the best-trained fire fighters in the nation. The training programs delivered at the Academy are dynamic in nature in order to provide technological support and to meet changing standards for all Mississippi fire fighters.

**OUR MISSION IS:**  
**"TO SERVE THE MISSISSIPPI FIRE SERVICE COMMUNITY AND THE WORLD**  
**BY PROVIDING QUALITY EDUCATION AND TRAINING IN FUNDAMENTAL AND ADVANCED SKILLS**  
**TO SAVE LIFE AND PROPERTY."**



## Organizational Chart





State Fire Academy of Mississippi  
Fund Balance Financial Statement  
July 1, 2011 to June 30, 2012

|                                      |                |
|--------------------------------------|----------------|
| Beginning Fund Balance July 1, 2011: | \$3,119,041.26 |
|--------------------------------------|----------------|

Income/Revenue Collections:

|  |                       |
|--|-----------------------|
| Fire Tax (1/2 of 1% of the gross premium receipts of fire insurance premiums levied) | \$3,781,077.29        |
| Course Fees and Memorabilia Sales  | \$ 939,253.75         |
| Sub Grant Funds-Passed through other State Agencies                                  | \$ 378,506.10         |
| Federal Grant Funds-Direct   | \$ 16,412.48          |
| Other Miscellaneous Income   | <u>\$ 2,708.34</u>    |
| <b>TOTAL Income/Revenue Collections:</b>   | <b>\$5,117,957.96</b> |

Expenses:

|                                  |                       |
|----------------------------------|-----------------------|
| Salaries, Wages, Fringe Benefits | \$3,813,898.70        |
| Travel                           | \$ 36,961.89          |
| Contractual Services             | \$ 596,356.27         |
| Commodities                      | \$ 724,103.91         |
| Campus Improvements              | \$ 32,008.28          |
| Equipment Purchases              | \$ 234,153.95         |
| Light/Medium Duty Trucks         | \$ 30,912.00          |
| Wireless Communication Devices   | \$ 303.49             |
| Resale Merchandise               | <u>\$ 42,676.98</u>   |
| <b>TOTAL Expenses:</b>           | <b>\$5,511,375.47</b> |

|                                    |                |
|------------------------------------|----------------|
| Ending Fund Balance June 30, 2012: | \$2,725,623.75 |
|------------------------------------|----------------|

**MS Code Annotated Section 45-11-5:**

Creation of a separate account known as the "State Fire Academy Fund" for the deposit of a tax of one-half of one percent (1/2 of 1%) of the gross premium receipts of fire insurance policies levied in the state.

**MS Code Annotated Section 45-11-7 (1):**

The State Fire Academy was created for the purpose of training and education of persons engaged in municipal, county and industrial fire protection.

The Academy is officially designated as the agency of this state to conduct training for fire personnel on a statewide basis to all duly constituted fire departments.

The Commissioner of Insurance may establish and charge reasonable fees for the training programs and other services provided by the Academy.





## Grant Information

The Academy was able to receive grant funds directly from the Federal Emergency Management Agency/National Fire Academy. This grant was utilized to pay for deliveries statewide of programs offered by the National Fire Academy.

Grant Funds Received: \$16,143.35  
Deliveries Offered: 67  
Students Participating: 1,481

The Mississippi Office of Homeland Security under the MS Department of Public Safety, awarded grant funds from the State Homeland Security Program. This grant was utilized for on campus and field delivery programs that have been approved through the Office of Domestic Preparedness. Course offerings include Rope Rescue, Confined Space Rescue, Hazardous Materials Awareness/Operations, Hazardous Materials Technician, Trench Rescue, and NIMS courses.

Grant Funds Received: \$213,071.33  
Deliveries Offered: 94  
Students Participating: 1,348

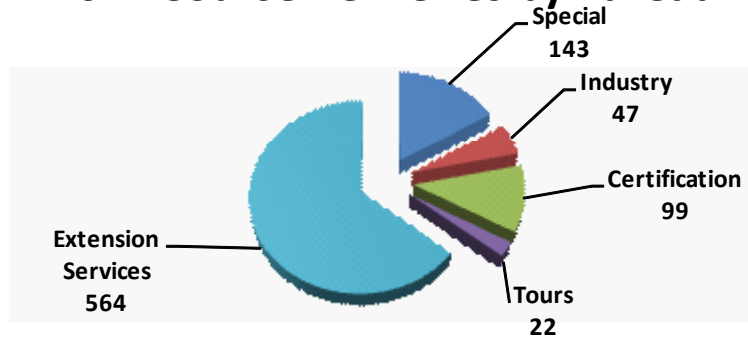
The Mississippi Emergency Management Agency awarded grant funds from the Hazardous Materials Emergency Preparedness, under the U. S. Department of Transportation. This grant was utilized for the delivery of Hazardous Materials Technician I, Hazardous Materials Technician II, Hazardous Materials Awareness/Operations, and Fire Chemistry.

Grant Funds Received: \$170,903.50  
Deliveries Offered: 61  
Students Participating: 850

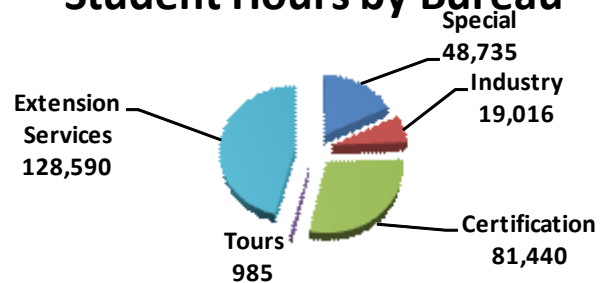
The Mississippi Liquefied Compressed Gas (LC Gas) Board of the Mississippi Insurance Department provided PERC grant funds for classes statewide to help emergency responders better understand the hazards of LP gases and prepare for the response to uncontrolled release of LP gas or fire.

Grant Funds Received: \$81,673.00  
Deliveries Offered: 8  
Students Participating: 595

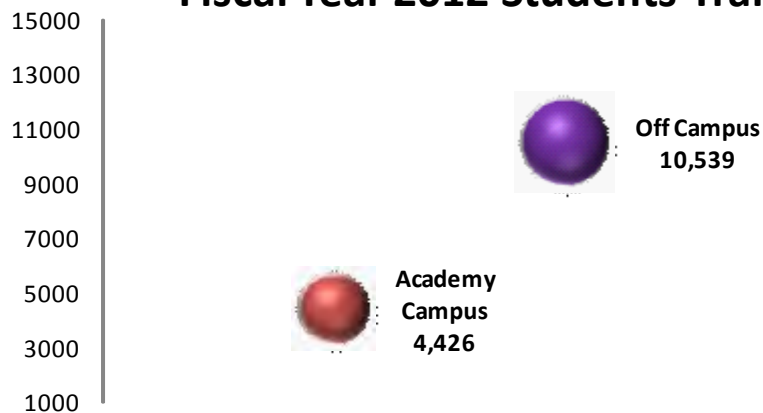
## 2012 Course Deliveries by Bureau



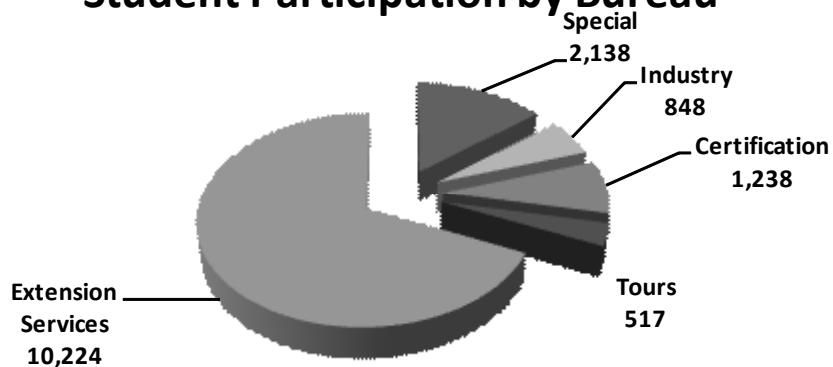
## Student Hours by Bureau



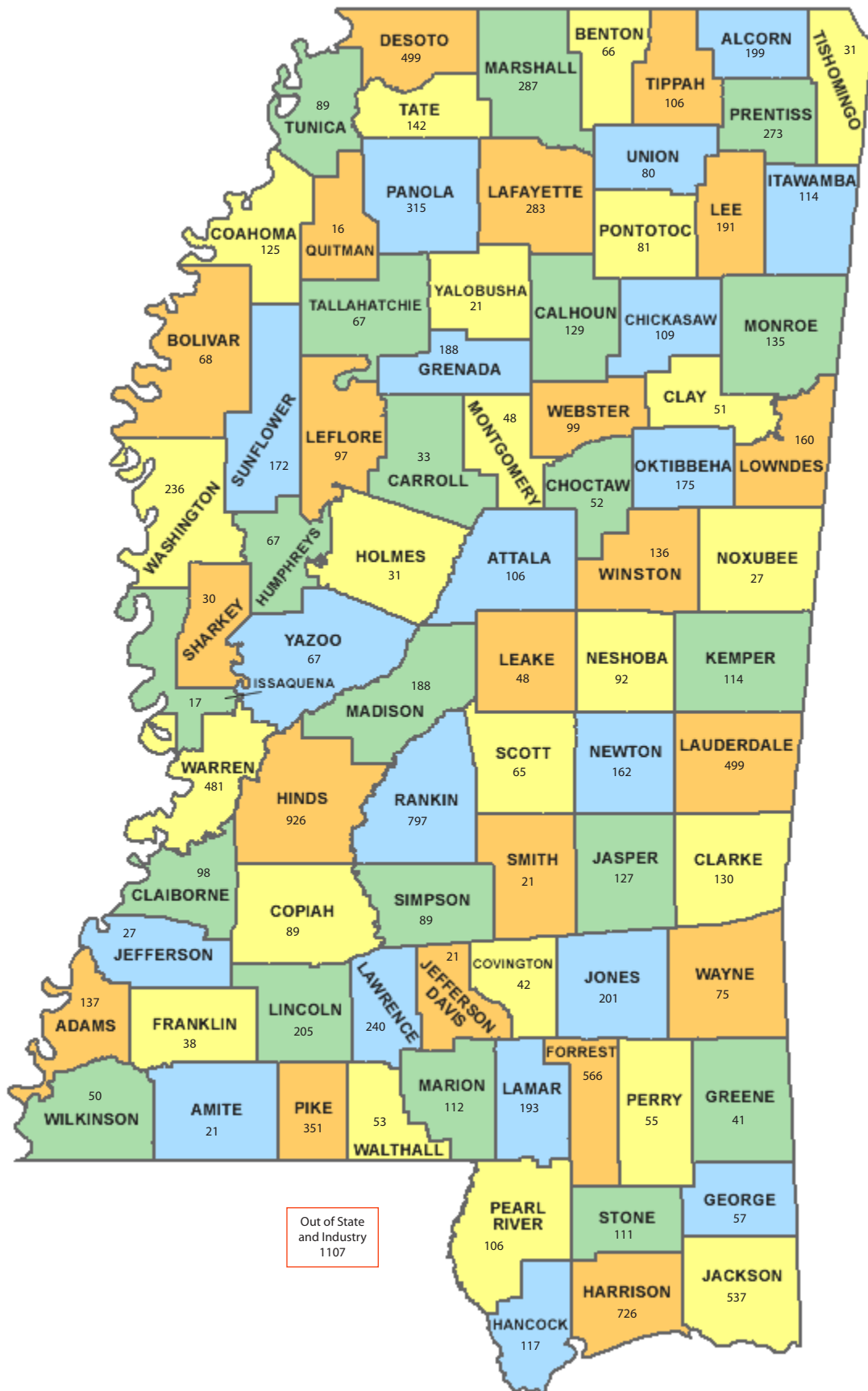
## Fiscal Year 2012 Students Trained



## Student Participation by Bureau



# Students Trained by County of Sending Organization Fiscal Year 2012




A background image showing four firefighters in full protective gear, including helmets and jackets, fighting a large fire. They are holding a hose and spraying water. The scene is smoky and the fire is bright orange and yellow. The text is overlaid on this image.

## CERTIFICATION SERVICES BUREAU

- Courses are designed to provide career, combination, and volunteer fire departments a wide range of programs that conform to National Fire Protection Association (NFPA) standards.
- Most courses have obtained International Fire Service Accreditation Congress (IFSAC) and National Board on Fire Service Professional Qualifications (PROBOARD) designation.
- Course deliveries consist of campus, field, contract programs, and distant learning programs.
- Administers the Candidate Physical Ability Test (CPAT) examination for the Mississippi Fire Personnel Minimum Standards and Certification Board (MSCB).





Candidate Physical Ability Test (CPAT)  
Candidate Physical Ability Test (CPAT) Orientation  
Emergency Medical Care  
Emergency Medical Care: Train-The-Trainer  
Fire Department Safety Officer 1521  
Fire Department Safety Officer 1521: Field Delivery

Fire Fighter 1001-I-II  
Fire Fighter 1001-I-II: Field Evaluation

Fire Inspector 1031-I

Fire Inspector 1031-II

Fire Investigator 1033

Fire Officer 1021-I-II

Fire Officer 1021-I-II: Distant Learner

Fire Officer 1021-I-II: Field Evaluation

Fire Service Chaplain

Fire Service Instructor 1041-I-II

Fire Service Instructor 1041-III

Fire Service Instructor 1041-I: Field Evaluation

Fire Service Instructor 1041-I: Distant Learning

Fire Service Instructor 1041-II: Distant Learning

Fires In Single Family Dwellings: Tactics And Strategy Module I

How To Develop And Assist In Fire Fighter Physical Fitness Programs

Interior Structural Fire Attack And Rescue

Mississippi County Fire Investigator

Mississippi County Fire Investigator: Annual-In-Service

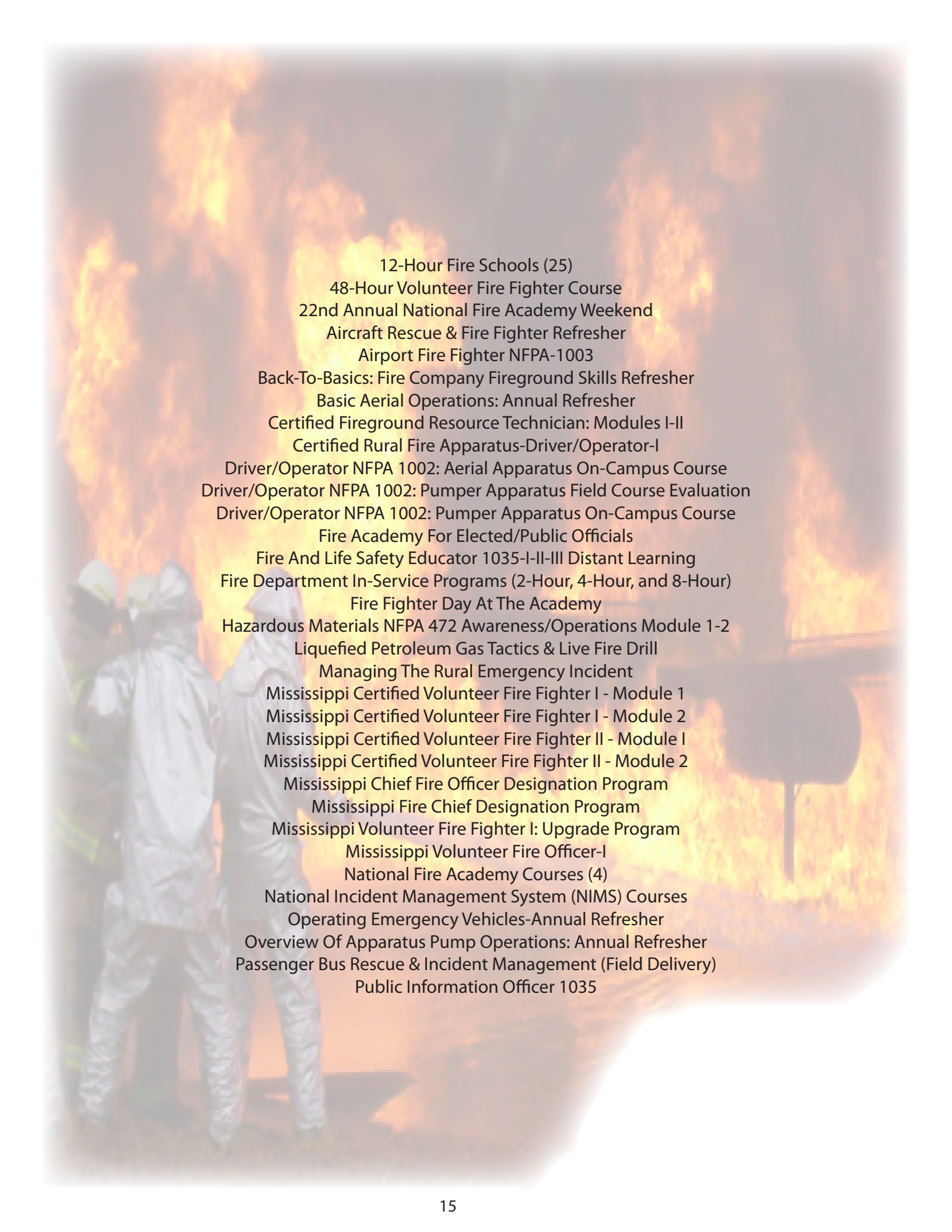
Mississippi Executive Fire Officer Program/Fire Officer 1021-III-IV



## EXTENSION SERVICES BUREAU

- Most courses are designed to be presented to the volunteer fire fighter.
- Utilizes a cadre' of associates to present training programs across the state.
- Administers the National Fire Protection Association (NFPA) 1002 Driver/Operator and National Fire Protection Association (NFPA) 1003 Airport Fire Fighter which hold International Fire Service Accreditation Congress (IFSAC) and National Board on Fire Service Professional Qualifications (PROBOARD) Accreditation.
- Liaison between the Mississippi State Fire Academy and the National Fire Academy.





12-Hour Fire Schools (25)  
48-Hour Volunteer Fire Fighter Course  
22nd Annual National Fire Academy Weekend  
Aircraft Rescue & Fire Fighter Refresher  
Airport Fire Fighter NFPA-1003  
Back-To-Basics: Fire Company Fireground Skills Refresher  
Basic Aerial Operations: Annual Refresher  
Certified Fireground Resource Technician: Modules I-II  
Certified Rural Fire Apparatus-Driver/Operator-I  
Driver/Operator NFPA 1002: Aerial Apparatus On-Campus Course  
Driver/Operator NFPA 1002: Pumper Apparatus Field Course Evaluation  
Driver/Operator NFPA 1002: Pumper Apparatus On-Campus Course  
Fire Academy For Elected/Public Officials  
Fire And Life Safety Educator 1035-I-II-III Distant Learning  
Fire Department In-Service Programs (2-Hour, 4-Hour, and 8-Hour)  
Fire Fighter Day At The Academy  
Hazardous Materials NFPA 472 Awareness/Operations Module 1-2  
Liquefied Petroleum Gas Tactics & Live Fire Drill  
Managing The Rural Emergency Incident  
Mississippi Certified Volunteer Fire Fighter I - Module 1  
Mississippi Certified Volunteer Fire Fighter I - Module 2  
Mississippi Certified Volunteer Fire Fighter II - Module I  
Mississippi Certified Volunteer Fire Fighter II - Module 2  
Mississippi Chief Fire Officer Designation Program  
Mississippi Fire Chief Designation Program  
Mississippi Volunteer Fire Fighter I: Upgrade Program  
Mississippi Volunteer Fire Officer-I  
National Fire Academy Courses (4)  
National Incident Management System (NIMS) Courses  
Operating Emergency Vehicles-Annual Refresher  
Overview Of Apparatus Pump Operations: Annual Refresher  
Passenger Bus Rescue & Incident Management (Field Delivery)  
Public Information Officer 1035



## SPECIAL/INDUSTRIAL SERVICES BUREAU

- Programs are generally formatted around the subject of industrial incipient firefighting, technical rescue, and hazardous materials response.
- Most courses have obtained International Fire Service Accreditation Congress (IFSAC) and National Board on Fire Service Professional Qualifications (PROBOARD) designation.
- Most special course student fees are supported with federal grant funds.
- Specializes in special technical programs geared towards fire department training.
- Program delivery consists of on-campus and on-site programs.





Certified Advanced Rescue Specialist (CARS)

Confined Space Rescue

Confined Space Rescue: Modules 1-4

Emergency Response To Terrorism: Basic Concepts

Fire Service Management-101

Firefighter Intervention Rescue Survival Techniques (FIRST)

Fireground Leadership

Hazardous Materials Awareness And Operations

Hazardous Materials Technician Field Training

Hazardous Materials Technician-I

Hazardous Materials Technician-II

Incipient And Structural Fire Brigade Training Programs: Modules I-V

Industrial Fire Fighter Refresher Training

Industrial On-Site Training Programs

NFA Chemistry Of Hazardous Materials: Fire Chem I

Rescue Refresher

Rope Rescue I: Modules 1-4

Rope Rescue Technician-I

Rope Rescue Technician-II

Smoke Diver

Trench Rescue & Emergency Shoring



## OTHER EXTENSION SERVICES

- Scott SCBA Technician Training - Specialist Level (Module I)
- Scott SCBA Technician Training - Airpack Fifty Technician (Module II)
- Scott SCBA Technician Training - NXG2 (Module III)
- Hale Fire Pump Rebuilding Class





#### ACADEMY TOURS

The Mississippi State Fire Academy training facility is available for public tours. Scheduled tours can be arranged for most types of educational, civic, and special groups. An age appropriate fire safety/information program can be developed to meet the needs of the audience.

Tours of the Academy grounds include a brief education/information program, informational handout, and walking tour of the facility explaining all aspects of fire fighter training. There is no charge for these tours.







## Associate Instructor Affiliations Fiscal Year 2012

The Academy contracted with the following individuals for course deliveries during the fiscal year.

|                     |                    |
|---------------------|--------------------|
| Joshua Abercrombie  | Derrick Layton     |
| Matt Bailey         | Ricky Leister      |
| Jonathan Blakenship | Jeffrey Mattison   |
| Edwin Blue          | Timothy Miller     |
| Justin Boulter      | Stephen Moore      |
| Finley Brown        | Joel Nix           |
| James Bryant        | Mark Nixon         |
| James Bunyard       | Robert Parker      |
| Robert Bush         | Gerald Pickle      |
| Lawrence Childs     | Bobby Poe          |
| Pierce Clark        | Danny Prather      |
| Charles Collins     | Gary Roberson      |
| Jason Cross         | Marshall Robinson  |
| Michelle Crowley    | Michael Rutherford |
| Phillip Cummings    | Kerry Scott        |
| Byran Cunningham    | Jason Sheldon      |
| Andrew Dermitt      | Herman Simpson     |
| Michael Devore      | Jeffrey Sims       |
| Lyman Fite          | Darryl Smith       |
| Sammy Foy           | James Smith        |
| Michael Gettinger   | Raleigh Sprouse    |
| Kendall Golden      | David Stanley      |
| Madison Guyton      | Joshua Swales      |
| Robert Hinkle       | Michael Towne      |
| Kenneth Holbrook    | Lisa Valadie       |
| Eddie Ivy           | Karl Van Horn      |
| Billy Johnson       | Tommy Wardlaw      |
| Jerry Johnson       | Chris Watkins      |
| Terry Johnson       | Michael Watts      |
| Tom Lariviere       |                    |





## Organizational Affiliations

Much of the development and improvement of a successful training program comes as the direct result of dialogue established with other persons in the business. The members of the State Fire Academy staff are affiliated with many related organizations and thus have opportunities to share ideas. Following is a list of organizations in which staff members are involved.

- ARFF (Aircraft Rescue and Fire Fighting) Working Group
- International Association of Arson Investigators
- International Association of Fire Chiefs
- International Code Council
- International Fire Service Accreditation Congress (IFSAC)
- Mississippi Administrative Assistants Association
- Mississippi Association of Governmental Purchasing and Property Agents
- Mississippi Association of Personnel Administrators
- Mississippi Association of Public Fire Safety Educators
- Mississippi Chapter of International Association of Arson Investigators
- Mississippi Fire Chiefs Association
- Mississippi Fire Fighters Association
- Mississippi Fire Service Instructors Association
- Mississippi Society of Certified Public Managers
- National Association of Fire Investigators
- National Fire Protection Association
- North American Fire Training Directors Association
- The ProBoard (National Professional Qualifications Board)



## 2012 PARTICIPATION REPORT BY TYPE OF PROGRAM

### Certification Services Bureau

| Course Name   | Student Count |
|---|---------------|
| CPAT EXAM   | 220           |
| EMERGENCY MEDICAL CARE  | 4             |
| EMERGENCY MEDICAL CARE TRAIN-THE-TRAINER                        | 3             |
| FIRE DEPARTMENT SAFETY OFFICER 1521                             | 45            |
| FIRE FIGHTER 1001-I-II  | 166           |
| FIRE FIGHTER 1001-I-II FIELD DELIVERY                           | 37            |
| FIRE INSPECTOR 1031-1   | 42            |
| FIRE INSPECTOR 1031-II  | 19            |
| FIRE INVESTIGATOR 1033  | 47            |
| FIRE OFFICER 1021-I-II  | 28            |
| FIRE OFFICER 1021-I-II FIELD DELIVERY                           | 6             |
| FIRE SERVICE CHAPLAIN   | 8             |
| FIRE SERVICE INSTRUCTOR 1041-I                                  | 39            |
| FIRE SERVICE INSTRUCTOR 1041-I FIELD DELIVERY                   | 31            |
| FIRE SERVICE INSTRUCTOR 1041-II                                 | 12            |
| FIRE SERVICE INSTRUCTOR 1041-III                                | 8             |
| FIRE SERVICE INSTRUCTOR 1041-I-II                               | 48            |
| FIRES IN SINGLE FAMILY DWELLINGS: TACTICS & STRATEGY            | 10            |
| HAZ MAT NFPA 472 OPERATIONS W/PPE & PRODUCT CONTROL FIELD DEL.  | 19            |
| HAZ MAT NFPA 472 OPERATIONS W/PPE & PRODUCT CONTROL             | 154           |
| HAZARDOUS MATERIALS FOR THE FIRST RESPONDER-NFPA 472            | 2             |
| HAZARDOUS MATERIALS FOR THE FIRST RESPONDER-NFPA 472 FIELD DEL. | 9             |
| HAZARDOUS MATERIALS NFPA 472 AWARENESS                          | 8             |
| HAZARDOUS MATERIALS NFPA 472 AWARENESS/OPERATIONS               | 9             |
| INTERIOR STRUCTURAL FIRE ATTACK AND RESCUE                      | 10            |
| MISSISSIPPI COUNTY FIRE INVESTIGATOR                            | 16            |
| MISSISSIPPI COUNTY FIRE INVESTIGATOR: ANNUAL IN-SERVICE         | 67            |
| MISSISSIPPI EXECUTIVE FIRE OFFICER 1021-III-IV MODULE 1         | 24            |
| MISSISSIPPI EXECUTIVE FIRE OFFICER 1021-III-IV MODULE 2         | 24            |
| MISSISSIPPI EXECUTIVE FIRE OFFICER 1021-III-IV MODULE 3         | 24            |
| NATIONAL INCIDENT MANAGEMENT SYSTEM-INTRODUCTION                | 16            |
| PUBLIC INFORMATION OFFICER 1035                                 | 12            |



## 2012 PARTICIPATION REPORT BY TYPE OF PROGRAM

### Extension Services Bureau

| Course Name   | Student Count |
|---|---------------|
| 2 IN - 2 OUT  | 16            |
| 48 HOUR VOLUNTEER FIRE FIGHTER                                | 9             |
| 48 HOUR VOLUNTEER FIRE FIGHTER-MODULE 1                       | 18            |
| A VISIT TO THE BONE YARD                                      | 50            |
| ADJUNCT INSTRUCTOR DEVELOPMENT-I                              | 8             |
| AIRCRAFT RESCUE FIRE FIGHTER REFRESHER TRAINING (3-HOUR)      | 161           |
| AIRCRAFT RESCUE FIRE FIGHTER REFRESHER TRAINING (6-HOUR)      | 104           |
| AIRCRAFT RESCUE FIRE FIGHTER REFRESHER TRAINING (8-HOUR)      | 24            |
| AIRPORT FIRE FIGHTER  | 44            |
| AND THE BEAT GOES ON  | 63            |
| APPARATUS OPERATIONS  | 47            |
| ASSOCIATE INSTRUCTOR DEVELOPMENT-LEVEL I                      | 32            |
| AUTOMOBILE EXTRICATION  | 460           |
| BASIC AERIAL OPERATIONS: ANNUAL REFRESHER                     | 21            |
| BASIC FIRE COMPANY FIREGROUND SKILLS REFRESHER                | 46            |
| BASIC RESCUE OPERATIONS                                       | 83            |
| CALLING THE MAYDAY I  | 745           |
| CALLING THE MAYDAY II   | 710           |
| CALLING THE MAYDAY TRAIN THE TRAINER                          | 21            |
| CAREER LONG TRAINING FOR 9-1-1 PERSONNEL                      | 68            |
| CERTIFIED FIREGROUND RESOURCE TECHNICIAN                      | 8             |
| CERTIFIED FIREGROUND RESOURCE TECHNICIAN-MODULE 1             | 24            |
| CERTIFIED RURAL FIRE APPARATUS-DRIVER/OPERATOR-I              | 82            |
| CRITICAL INCIDENT RESPONSE                                    | 52            |
| DEFENSIVE DRIVING IN-SERVICE TRAINING                         | 57            |
| DEVELOPING & SUSTAINING A WATER SUPPLY                        | 64            |
| DISASTER RESPONSE/REPORTING BETWEEN MUNICIPALITIES & COUNTIES | 54            |
| DRIVER/OPERATOR - PUMPER: TRAIN-THE-TRAINER                   | 3             |
| DRIVER/OPERATOR NFPA 1002: PUMPER APPARATUS                   | 102           |
| DRIVER/OPERATOR NFPA 1002: PUMPER APPARATUS (FIELD DELIVERY)  | 79            |
| EMPLOYMENT LAWS   | 57            |
| ENGINE COMPANY OPERATIONS - PART 1                            | 140           |
| ENGINE COMPANY OPERATIONS - PART 2                            | 24            |
| EVERYDAY FIRE   | 212           |
| FIRE ACADEMY FOR ELECTED/PUBLIC OFFICIALS                     | 19            |
| FIRE AND LIFE SAFETY EDUCATOR-I-II-III                        | 3             |
| FIRE APPARATUS TESTING  | 7             |
| FIRE ATTACK WITH FOAM   | 177           |
| FIRE FIGHTER DAY AT THE ACADEMY                               | 41            |
| FIRE FIGHTER ESSENTIAL SKILLS - I                             | 173           |
| FIRE FIGHTER ESSENTIAL SKILLS - II                            | 186           |
| FIRE FIGHTER ESSENTIAL SKILLS - III                           | 54            |
| FIRE PREVENTION FOR FIRST RESPONDERS AND SMALL DEPTS          | 18            |



## 2012 PARTICIPATION REPORT BY TYPE OF PROGRAM

### Extension Services Bureau (Cont.)

| Course Name  | Student Count |
|--|---------------|
| FIRE SERVICE ETHICS  | 26            |
| FIRE SERVICE RESCUE 101                                    | 149           |
| FIREGROUND SUPPORT OPERATIONS                              | 82            |
| FOAM RESPONSE  | 29            |
| HAIR ON FIRE   | 60            |
| HALE PUMP  | 23            |
| HAZ MAT NFPA 472 OPERATIONS W/PPE & PRODUCT CONTROL        | 46            |
| HAZARDOUS MATERIALS AWARENESS/OPERATIONS-MODULE 1          | 43            |
| HAZARDOUS MATERIALS NFPA 472 AWARENESS                     | 24            |
| HAZARDOUS MATERIALS NFPA 472 AWARENESS/OPERATIONS          | 18            |
| HAZARDOUS MATERIALS: INITIAL RESPONSE                      | 245           |
| INCIDENT COMMAND FOR HIGHRISE OPERATIONS                   | 18            |
| INCIDENT SAFETY OFFICER                                    | 45            |
| INCIDENT SAFETY OFFICER: TRAIN-THE-TRAINER                 | 26            |
| INTRO TO STRUCTURAL FIRE ATTACK & RESCUE FOR 911 PERSONNEL | 36            |
| INTRODUCTION TO ARFF FOR STRUCTURAL FIRE FIGHTERS          | 22            |
| IS 100: INTRODUCTION TO ICS                                | 40            |
| IS 200: ICS FOR SINGLE RESOURCE AND INITIAL ACTIONS        | 40            |
| LEGAL ISSUES MINIMIZING EXPOSURE                           | 30            |
| LP-GAS TACTICS & LIVE FIRE DRILL                           | 595           |
| MAKING A BAD SITUATION BETTER                              | 61            |
| MANAGING IN A CHANGING ENVIRONMENT                         | 28            |
| MANAGING THE RURAL EMERGENCY INCIDENT                      | 226           |
| MISSISSIPPI CERTIFIED VOL. FIRE FIGHTER [NFPA 1001-BASED]  | 47            |
| MISSISSIPPI CERTIFIED VOLUNTEER FIRE FIGHTER I             | 298           |
| MISSISSIPPI CERTIFIED VOLUNTEER FIRE FIGHTER II            | 225           |
| MISSISSIPPI CERTIFIED VOLUNTEER FIRE FIGHTER II MODULE I   | 191           |
| MISSISSIPPI FIRE FIGHTER SAFETY 2004                       | 74            |
| MISSISSIPPI VOLUNTEER FIRE FIGHTER 1: UP-GRADE             | 61            |
| MISSISSIPPI VOLUNTEER FIRE FIGHTER 1-MODULE 1 CLASSROOM    | 498           |
| MISSISSIPPI VOLUNTEER FIRE OFFICER-I                       | 49            |
| MS FIRE PREVENTION AND PUBLIC FIRE SAFETY EDUCATION        | 370           |
| MS TRAINING CHIEFS CONFERENCE                              | 52            |
| NATIONAL FIRE ACADEMY-MS WEEKEND PROGRAM                   | 38            |
| NATIONAL INCIDENT MANAGEMENT SYSTEM-INTRODUCTION           | 25            |
| NATURAL GAS RESPONSE CONSIDERATIONS FOR FIRE DEPT.         | 28            |
| NIMS ICS 300 (INTERMEDIATE ICS)                            | 121           |
| NIMS ICS 400 (ADVANCED ICS)                                | 77            |
| NIMS ICS-800: NATIONAL RESPONSE PLAN-INTRODUCTION          | 7             |
| NIMS COMMAND SYSTEM 300                                    | 11            |
| NIMS COMMAND SYSTEM 300 & 400: FACILITATOR                 | 2             |
| NIMS COMMAND SYSTEM 300: TRAIN-THE-TRAINER                 | 2             |
| NIMS COMMAND SYSTEM 400                                    | 19            |





## 2012 PARTICIPATION REPORT BY TYPE OF PROGRAM

### Extension Services Bureau (Cont.)

| Course Name   | Student Count |
|---|---------------|
| NIMS COMMAND SYSTEM 400: TRAIN-THE-TRAINER                | 3             |
| NIMS INCIDENT COMMAND SYSTEM FOR THE FIRE SERVICE         | 63            |
| NIMS: COMMUNICATIONS AND INFORMATION MANAGEMENT           | 8             |
| NIMS: DEVELOPING AND MANAGING VOLUNTEERS                  | 1             |
| NIMS: EFFECTIVE COMMUNICATION                             | 1             |
| NIMS: FUNDAMENTALS OF EMERGENCY MANAGEMENT                | 1             |
| NIMS: MULTIAGENCY COORDINATION SYSTEM (MACS)              | 8             |
| NIMS: PUBLIC INFORMATION SYSTEMS                          | 8             |
| NIMS: RESOURCE MANAGEMENT                                 | 8             |
| NORTH MISSISSIPPI FIRE EXPO                               | 174           |
| OFFICE FITNESS THE EASY WAY                               | 68            |
| OPERATING EMERGENCY VEHICLES - ANNUAL REFRESHER           | 140           |
| OVERVIEW OF APPARATUS PUMP OPERATIONS                     | 21            |
| PASSENGER BUS RESCUE & INCIDENT MANAGEMENT                | 27            |
| RAPID INTERVENTION TEAMS                                  | 52            |
| RESPONDING TO FIRE/RESCUE INCIDENTS: 911 PERSONNEL        | 19            |
| RESPONDING TO PROPANE EMERGENCIES                         | 22            |
| RESPONSE TO NEW VEHICLE FIRES                             | 83            |
| RURAL FIREFIGHTING: THE WATER SUPPLY CHALLENGE            | 14            |
| STAFF DEVELOPMENT - WORD TO THE WISE                      | 61            |
| STRATEGIES FOR FIRE FIGHTER PERSONAL SUCCESS              | 13            |
| STRATEGIES FOR PERSONAL SUCCESS                           | 8             |
| STRATEGY & TACTICS FOR INITIAL COMPANY OPERATIONS (STICO) | 12            |
| STRUCTURAL FIRE ATTACK                                    | 119           |
| SWIMMING WITH SHARKS                                      | 41            |
| THE FIRE APPARATUS DRIVER                                 | 348           |
| THE POLITICS OF PUBLIC EMPLOYMENT                         | 57            |
| TRAINING OPERATIONS IN SMALL DEPARTMENTS                  | 30            |
| TRAINING, RESPONDING AND RETURNING HOME ALIVE             | 55            |
| UNDERSTANDING THE ROLE OF THE INCIDENT SAFETY OFFICER     | 22            |
| USING BODY PARTS TO ENHANCE LEADERSHIP & DECISION-MAKING  | 42            |
| VOLUNTEER FIRE FIGHTER I - MODULE 1 - 2ND ATTEMPT         | 30            |
| VOLUNTEER FIRE FIGHTER INSTRUCTOR ORIENTATION             | 28            |



## 2012 PARTICIPATION REPORT BY TYPE OF PROGRAM

### Industrial Services Bureau

| Course Name  | Student Count |
|--|---------------|
| CHLOREP TRAINING                                     | 151           |
| CONFINED SPACE RESCUE REFRESHER                      | 15            |
| EMERGENCY RESPONSE TRAINING (24-HOUR)                | 26            |
| EMERGENCY RESPONSE TRAINING (40-HOUR)                | 13            |
| INDUSTRIAL HAZ MAT TRAINING                          | 9             |
| INDUSTRIAL REFRESHER FIRE FIGHTER TRAINING (16-HOUR) | 44            |
| INDUSTRIAL REFRESHER FIRE FIGHTER TRAINING (24-HOUR) | 165           |
| INDUSTRIAL REFRESHER FIRE FIGHTER TRAINING (32-HOUR) | 13            |
| INDUSTRIAL REFRESHER FIRE FIGHTER TRAINING (4-HOUR)  | 17            |
| INDUSTRIAL REFRESHER FIRE FIGHTER TRAINING (40-HOUR) | 38            |
| INDUSTRIAL REFRESHER FIRE FIGHTER TRAINING (8-HOUR)  | 247           |
| INDUSTRIAL RESCUE                                    | 36            |
| INDUSTRIAL RESCUE REFRESHER (16-HOUR)                | 12            |
| INDUSTRIAL RESCUE REFRESHER (24-HOUR)                | 13            |
| REFRESHER HAZ MAT TRAINING (24-HOUR)                 | 22            |
| REFRESHER HAZ MAT TRAINING (32-HOUR)                 | 10            |
| ROPE RESCUE I  | 14            |
| TRENCH RESCUE AND EMERGENCY SHORING TECHNICIAN       | 9             |



## 2012 PARTICIPATION REPORT BY TYPE OF PROGRAM

### Special Services Bureau

| Course Name   | Student Count |
|---|---------------|
| CERTIFIED ADVANCED RESCUE TECHNICIAN                        | 18            |
| CHEMISTRY OF HAZARDOUS MATERIALS: FIRE CHEM I               | 18            |
| CHLORINE/COMMUNICATIONS WITH THE MEDIA                      | 79            |
| CONFINED SPACE RESCUE MODULE 1                              | 92            |
| CONFINED SPACE RESCUE MODULE 2                              | 91            |
| CONFINED SPACE RESCUE MODULE 3                              | 91            |
| CONFINED SPACE RESCUE MODULE 4                              | 91            |
| CONFINED SPACE RESCUE TECHNICIAN                            | 69            |
| DECONTAMINATION/CHEMICAL PROTECTIVE CLOTHING                | 79            |
| FIRE SERVICE MANAGEMENT 101                                 | 25            |
| FIREFIGHTER INTERVENTION RESCUE SURVIVAL TECHNIQUES         | 76            |
| FIREGROUND LEADERSHIP                                       | 36            |
| HAZARDOUS MATERIALS AWARENESS AND OPERATIONS                | 19            |
| HAZARDOUS MATERIALS FOR FIRST RESPONDERS                    | 56            |
| HAZARDOUS MATERIALS TECHNICIAN (FIELD DELIVERY)             | 53            |
| HAZARDOUS MATERIALS TECHNICIAN - I                          | 99            |
| HAZARDOUS MATERIALS TECHNICIAN-II                           | 37            |
| NON-BULK CONTAINERS/HIGHWAY CARRIERS/RAIL CARS              | 79            |
| RESCUE TECHNICIAN: ROPE RESCUE/CONFINED SPACE               | 11            |
| RESPONDING TO HAZARDOUS MATERIALS INCIDENTS                 | 79            |
| ROPE RESCUE I - MODULE 1                                    | 109           |
| ROPE RESCUE I - MODULE 2                                    | 124           |
| ROPE RESCUE I - MODULE 3                                    | 122           |
| ROPE RESCUE I - MODULE 4                                    | 122           |
| ROPE RESCUE II  | 88            |
| ROPE RESCUE TECHNICIAN - I                                  | 79            |
| SMOKE DIVER   | 52            |
| SOURCES OF ASSISTANCE/HAZ MAT ICS/CHEM. TERMS & DEFINITIONS | 87            |
| TOXICOLOGY/MONITORING DEVICES/WEAPONS OF MASS DESTRUCTION   | 80            |
| TRENCH RESCUE AND EMERGENCY SHORING TECHNICIAN              | 122           |



## 2012 PARTICIPATION REPORT BY ORGANIZATION

| Organization Name                                   | Student Count |
|---|---------------|
| 47th CIVIL SUPPORT TEAM                             | 2             |
| ABEL'S STORE VOLUNTEER FIRE DEPARTMENT              | 7             |
| ABERDEEN FIRE DEPARTMENT                            | 6             |
| ACADIANA REGIONAL AIRPORT                           | 1             |
| ACKERMAN FIRE DEPARTMENT                            | 17            |
| ACONA VOLUNTEER FIRE DEPARTMENT                     | 11            |
| ADAMS COUNTY EMERGENCY MANAGEMENT                   | 10            |
| ADAMS COUNTY SHERIFF'S DEPARTMENT                   | 2             |
| ADATON/SELF CREEK FIRE DEPARTMENT                   | 2             |
| AGRICOLA VOLUNTEER FIRE DEPARTMENT                  | 8             |
| ALAMUCHA VOLUNTEER FIRE DEPARTMENT                  | 2             |
| ALCORN COUNTY FIRE COORDINATOR                      | 1             |
| ALCORN COUNTY FIRE SERVICES                         | 1             |
| ALCORN COUNTY SHERIFF'S DEPARTMENT                  | 5             |
| ALCORN STATE UNIVERSITY                             | 3             |
| ALGOMA VOLUNTEER FIRE DEPARTMENT                    | 7             |
| ALLEN VOLUNTEER FIRE DEPARTMENT                     | 15            |
| ALPHABA/COCKRUM/INGRAMS FIRE DEPARTMENT             | 13            |
| ALTITUDE VOLUNTEER FIRE DEPARTMENT                  | 17            |
| AMORY FIRE DEPARTMENT                               | 13            |
| AMR - HINDS COUNTY                                  | 4             |
| AMR - NATCHEZ                                       | 2             |
| ANGUILLA VOLUNTEER FIRE DEPARTMENT                  | 3             |
| ARCOLA VOLUNTEER FIRE DEPARTMENT                    | 9             |
| ARLINGTON VOLUNTEER FIRE DEPARTMENT/NESHOBIA COUNTY | 1             |
| ARM VOLUNTEER FIRE DEPARTMENT                       | 3             |
| ASHLAND VOLUNTEER FIRE DEPARTMENT                   | 28            |
| ATTALA COUNTY BEAT 2/MCCOOL FIRE DEPARTMENT         | 4             |
| ATTALA COUNTY CENTRAL FIRE DEPARTMENT               | 59            |
| ATTALA COUNTY CIVIL DEFENSE                         | 7             |
| ATTALA COUNTY SHERIFF'S DEPARTMENT                  | 3             |
| ATTALA COUNTY FRIENDSHIP VOLUNTEER FIRE DEPARTMENT  | 4             |
| BAILEY VOLUNTEER FIRE DEPARTMENT                    | 20            |
| BALDWIN VOLUNTEER FIRE DEPARTMENT                   | 16            |
| BANNER VOLUNTEER FIRE DEPARTMENT/CALHOUN COUNTY     | 6             |
| BARNES VOLUNTEER FIRE DEPARTMENT                    | 9             |
| BARTON VOLUNTEER FIRE DEPARTMENT/GEORGE COUNTY      | 7             |
| BARTON VOLUNTEER FIRE DEPARTMENT/MARSHALL COUNTY    | 24            |
| BASIN VOLUNTEER FIRE DEPARTMENT                     | 9             |
| BASSFIELD VOLUNTEER FIRE DEPARTMENT                 | 6             |
| BATESVILLE FIRE DEPARTMENT                          | 155           |
| BATESVILLE POLICE DEPARTMENT                        | 2             |
| BAY SPRINGS VOLUNTEER FIRE DEPARTMENT               | 11            |





## 2012 PARTICIPATION REPORT BY ORGANIZATION (Cont.)

| Organization Name                                   | Student Count |
|---|---------------|
| BAY ST. LOUIS FIRE DEPARTMENT                       | 4             |
| BAYSIDE PARK VOLUNTEER FIRE DEPARTMENT              | 14            |
| BEAUMONT VOLUNTEER FIRE DEPARTMENT                  | 5             |
| BEAVER LAKE VOLUNTEER FIRE DEPARTMENT               | 11            |
| BEAVER MEADOWS VOLUNTEER FIRE DEPARTMENT            | 4             |
| BEAVERDAM VOLUNTEER FIRE DEPARTMENT                 | 14            |
| BECKER-ATHENS VOLUNTEER FIRE DEPARTMENT             | 11            |
| BECKHAM VOLUNTEER FIRE DEPARTMENT                   | 2             |
| BELMONT FIRE DEPARTMENT                             | 1             |
| BELZONI FIRE DEPARTMENT                             | 51            |
| BENTON COUNTY SHERIFF'S DEPARTMENT                  | 1             |
| BENTON VOLUNTEER FIRE DEPARTMENT                    | 11            |
| BENTONIA VOLUNTEER FIRE DEPARTMENT                  | 10            |
| BETHEDEN VOLUNTEER FIRE DEPARTMENT                  | 23            |
| BETHEL VOLUNTEER FIRE DEPARTMENT                    | 8             |
| BETHELEM VOLUNTEER FIRE DEPARTMENT                  | 1             |
| BEULAH HUBBARD VOLUNTEER FIRE DEPARTMENT/NEWTON CO. | 9             |
| BEXLEY VOLUNTEER FIRE DEPARTMENT                    | 3             |
| BIG CREEK VOLUNTEER FIRE DEPARTMENT                 | 4             |
| BIG LEVEL VOLUNTEER FIRE DEPARTMENT                 | 11            |
| BIGGERSVILLE VOLUNTEER FIRE DEPARTMENT              | 7             |
| BILOXI FIRE DEPARTMENT                              | 25            |
| BILOXI POLICE DEPARTMENT                            | 6             |
| BLACKHAWK VOLUNTEER FIRE DEPARTMENT                 | 4             |
| BLACKLAND VOLUNTEER FIRE DEPARTMENT                 | 1             |
| BLUE MOUNTAIN VOLUNTEER FIRE DEPARTMENT             | 16            |
| BLYTHEVILLE FIRE DEPARTMENT                         | 18            |
| BOGGY VOLUNTEER FIRE DEPARTMENT                     | 2             |
| BOLIVAR COUNTY FIRE DEPARTMENT                      | 28            |
| BOLTON VOLUNTEER FIRE DEPARTMENT                    | 2             |
| BOONEVILLE FIRE DEPARTMENT                          | 138           |
| BOONEVILLE POLICE DEPARTMENT                        | 8             |
| BOVINA VOLUNTEER FIRE DEPARTMENT                    | 4             |
| BRANDON FIRE DEPARTMENT                             | 60            |
| BRANDON POLICE DEPARTMENT                           | 20            |
| BRAXTON VOLUNTEER FIRE DEPARTMENT                   | 31            |
| BRIDGETOWN VOLUNTEER FIRE DEPARTMENT                | 7             |
| BROOKHAVEN FIRE DEPARTMENT                          | 112           |
| BROOKLYN VOLUNTEER FIRE DEPARTMENT                  | 6             |
| BROOKSVILLE VOLUNTEER FIRE DEPARTMENT               | 9             |
| BROWNSVILLE VOLUNTEER FIRE DEPARTMENT               | 10            |
| BRUCE VOLUNTEER FIRE DEPARTMENT                     | 17            |
| BUDE VOLUNTEER FIRE DEPARTMENT                      | 8             |



## 2012 PARTICIPATION REPORT BY ORGANIZATION (Cont.)

| Organization Name                                 | Student Count |
|---|---------------|
| BUFFALO VOLUNTEER FIRE DEPARTMENT                 | 13            |
| BUNKOM HILL/NEW HOPE VOLUNTEER FIRE DEPARTMENT    | 23            |
| BURNSVILLE VOLUNTEER FIRE DEPARTMENT              | 9             |
| BURTON VOLUNTEER FIRE DEPARTMENT                  | 13            |
| BYHALIA VOLUNTEER FIRE DEPARTMENT                 | 36            |
| BYNUM VOLUNTEER FIRE DEPARTMENT                   | 13            |
| BYRAM FIRE DEPARTMENT                             | 10            |
| BYRAM VOLUNTEER FIRE DEPARTMENT                   | 15            |
| BYWY VOLUNTEER FIRE DEPARTMENT/CHOCTAW COUNTY     | 7             |
| CAIRO VOLUNTEER FIRE DEPARTMENT                   | 6             |
| CALHOUN CITY VOLUNTEER FIRE DEPARTMENT            | 41            |
| CALHOUN COUNTY FIRE COORDINATOR                   | 1             |
| CALHOUN COUNTY SHERIFF'S DEPARTMENT               | 9             |
| CALHOUN VOLUNTEER FIRE DEPARTMENT                 | 3             |
| CAMDEN FIRE & RESCUE                              | 1             |
| CAMP SHELBY-MS MILITARY FIRE DEPARTMENT           | 1             |
| CANNONSBURG/CHURCH HILL VOLUNTEER FIRE DEPARTMENT | 3             |
| CANTON FIRE DEPARTMENT                            | 31            |
| CARMICHAEL VOLUNTEER FIRE DEPARTMENT              | 4             |
| CARNES VOLUNTEER FIRE DEPARTMENT                  | 31            |
| CARRIERE VOLUNTEER FIRE DEPARTMENT                | 10            |
| CARROLL COUNTY BEAT 4 VOLUNTEER FIRE DEPARTMENT   | 1             |
| CARROLL COUNTY SHERIFF'S DEPARTMENT               | 1             |
| CARTHAGE AMBULANCE                                | 1             |
| CARTHAGE FIRE DEPARTMENT                          | 21            |
| CARY VOLUNTEER FIRE DEPARTMENT                    | 1             |
| CASCILLA VOLUNTEER FIRE DEPARTMENT                | 4             |
| CAUSEYVILLE VOLUNTEER FIRE DEPARTMENT             | 5             |
| CAYCE VOLUNTEER FIRE DEPARTMENT                   | 34            |
| CEDAR CREEK VOLUNTEER FIRE DEPARTMENT             | 33            |
| CEDAR HILL FIRE DEPARTMENT                        | 1             |
| CENTER RIDGE VOLUNTEER FIRE DEPARTMENT            | 2             |
| CENTER VOLUNTEER FIRE DEPARTMENT/UNION CITY       | 1             |
| CENTRAL CLAY COUNTY/#600 FIRE DEPARTMENT          | 1             |
| CENTRAL GEORGE COUNTY VOLUNTEER FIRE DEPARTMENT   | 7             |
| CENTRAL JASPER COUNTY VOLUNTEER FIRE DEPARTMENT   | 12            |
| CENTRAL LAMAR COUNTY FIRE DEPARTMENT              | 6             |
| CENTRAL MS CORRECTIONAL FACILITY                  | 12            |
| CENTRAL OKTIBBEHA /LONGVIEW FIRE DEPARTMENT       | 15            |
| CENTREVILLE VOLUNTEER FIRE DEPARTMENT             | 9             |
| CHARLESTON VOLUNTEER FIRE DEPARTMENT              | 12            |
| CHICKASAW COUNTY SHERIFF'S DEPARTMENT             | 1             |
| CHICKEN BONE FIRE DEPARTMENT                      | 13            |



## 2012 PARTICIPATION REPORT BY ORGANIZATION (Cont.)

| Organization Name                                 | Student Count |
|---|---------------|
| CHLORINE INSTITUTE                                | 151           |
| CHOCTAW COUNTY EMERGENCY MANAGEMEN AGENCY         | 2             |
| CHOCTAW COUNTY SHERIFF'S DEPARTMENT               | 2             |
| CHOCTAW FIRE DEPARTMENT                           | 15            |
| CHUNKY VOLUNTEER FIRE DEPARTMENT                  | 15            |
| CLAIBORNE COUNTY FIRE DEPARTMENT                  | 10            |
| CLAIBORNE COUNTY SHERIFF'S DEPARTMENT             | 3             |
| CLARA FIRE DEPARTMENT/WAYNE COUNTY                | 2             |
| CLARKDALE VOLUNTEER FIRE DEPARTMENT               | 4             |
| CLARKE COUNTY FIRE SERVICE                        | 3             |
| CLARKE COUNTY SHERIFF'S DEPARTMENT                | 1             |
| CLARKSDALE FIRE DEPARTMENT                        | 72            |
| CLARKSON/FAME VOLUNTEER FIRE DEPARTMENT           | 5             |
| CLAY COUNTY 911                                   | 2             |
| CLAY COUNTY SHERIFF'S DEPARTMENT                  | 5             |
| CLEARY VOLUNTEER FIRE DEPARTMENT                  | 1             |
| CLERMONT HARBOR VOLUNTEER FIRE DEPARTMENT         | 2             |
| CLEVELAND FIRE DEPARTMENT                         | 27            |
| CLINTON FIRE DEPARTMENT                           | 74            |
| COAHOMA COUNTY FIRE COORDINATOR                   | 1             |
| COAHOMA COUNTY FIRE DEPARTMENT                    | 49            |
| COFFEEVILLE VOLUNTEER FIRE DEPARTMENT             | 4             |
| COLDWATER VOLUNTEER FIRE DEPARTMENT               | 9             |
| COLES POINT VOLUNTEER FIRE DEPARTMENT             | 15            |
| COLLINS FIRE DEPARTMENT                           | 6             |
| COLUMBIA FIRE DEPARTMENT                          | 23            |
| COLUMBUS AIR FORCE BASE FIRE DEPARTMENT           | 7             |
| COLUMBUS FIRE DEPARTMENT                          | 104           |
| COLUMBUS POLICE DEPARTMENT                        | 6             |
| CONEHATTA VOLUNTEER FIRE DEPARTMENT               | 4             |
| COPIAH COUNTY SHERIFF'S DEPARTMENT                | 1             |
| CORINTH FIRE DEPARTMENT                           | 110           |
| COUNTY LINE VOLUNTEER FIRE DEPARTMENT             | 6             |
| COURTLAND VOLUNTEER FIRE DEPARTMENT               | 4             |
| CRENSHAW VOLUNTEER FIRE DEPARTMENT                | 12            |
| CROSSROADS VOLUNTEER FIRE DEPARTMENT/HINDS COUNTY | 2             |
| CROWDER VOLUNTEER FIRE DEPARTMENT                 | 4             |
| CUEVAS VOLUNTEER FIRE DEPARTMENT                  | 2             |
| CULKIN VOLUNTEER FIRE DEPARTMENT                  | 60            |
| CUMBERLAND VOLUNTEER FIRE DEPARTMENT              | 9             |
| DAMASCUS FIRE DEPARTMENT                          | 26            |
| DECATUR VOLUNTEER FIRE DEPARTMENT                 | 9             |
| DEKALB VOLUNTEER FIRE DEPARTMENT                  | 2             |



## 2012 PARTICIPATION REPORT BY ORGANIZATION (Cont.)

| Organization Name                                   | Student Count |
|---|---------------|
| DEPARTMENT OF INSURANCE                             | 4             |
| DERMA VOLUNTEER FIRE DEPARTMENT                     | 10            |
| DESOTO COUNTY FIRE TRAINING                         | 1             |
| DESOTO COUNTY SHERIFF'S DEPARTMENT                  | 6             |
| DESOTO COUNTY EMERGENCY SERVICES                    | 4             |
| DESOTO VOLUNTEER FIRE DEPARTMENT/CLARKE COUNTY      | 7             |
| DIAMONDHEAD FIRE DEPARTMENT                         | 31            |
| D'IBERVILLE FIRE DEPARTMENT                         | 10            |
| DISTRICT 3 VOLUNTEER FIRE DEPARTMENT LOWNDES COUNTY | 4             |
| DIXIE VOLUNTEER FIRE DEPARTMENT                     | 26            |
| DIXON VOLUNTEER FIRE DEPARTMENT                     | 20            |
| DORSEY/FRIENDSHIP FIRE DEPARTMENT                   | 2             |
| DOTHAN REGIONAL AIRPORT FIRE DEPARTMENT             | 8             |
| DREW VOLUNTEER FIRE DEPARTMENT                      | 2             |
| DUCK HILL VOLUNTEER FIRE DEPARTMENT                 | 29            |
| DUFFEE VOLUNTEER FIRE DEPARTMENT                    | 4             |
| DUMAS VOLUNTEER FIRE DEPARTMENT                     | 31            |
| DUNCAN FIRE DEPARTMENT/BOLIVAR COUNTY DISTRICT 2    | 3             |
| DUPONT SPECIALTY CHEMICALS                          | 111           |
| DURANT VOLUNTEER FIRE DEPARTMENT                    | 8             |
| E. CENTRAL VOLUNTEER FIRE DEPARTMENT                | 17            |
| E. CENTRAL/E. FORK FIRE DEPARTMENT                  | 3             |
| E. COVINGTON VOLUNTEER FIRE DEPARTMENT              | 2             |
| E. FRANKLIN RURAL FIRE DEPARTMENT                   | 1             |
| E. LINCOLN VOLUNTEER FIRE DEPARTMENT                | 12            |
| E. OKTIBBEHA COUNTY FIRE DEPARTMENT                 | 29            |
| E. QUITMAN VOLUNTEER FIRE DEPARTMENT                | 2             |
| E. UNION VOLUNTEER FIRE DEPARTMENT                  | 3             |
| E. WINSTON COUNTY VOLUNTEER FIRE DEPARTMENT         | 15            |
| EAGLE LAKE VOLUNTEER FIRE DEPARTMENT                | 12            |
| EBENEZER VOLUNTEER FIRE DEPARTMENT                  | 1             |
| ECRU VOLUNTEER FIRE DEPARTMENT                      | 5             |
| EDINBURG VOLUNTEER FIRE DEPARTMENT                  | 1             |
| EKA CHEMICALS, INC.                                 | 22            |
| ELLIOTT VOLUNTEER FIRE DEPARTMENT                   | 11            |
| ELLISVILLE FIRE DEPARTMENT                          | 25            |
| ENGLAND AIRPARK FIRE DEPARTMENT                     | 21            |
| ENON VOLUNTEER FIRE DEPARTMENT                      | 12            |
| ENTERPRISE VOLUNTEER FIRE DEPARTMENT                | 20            |
| ERGON REFINING, INC.                                | 87            |
| ESCATAWPA VOLUNTEER FIRE DEPARTMENT                 | 2             |
| ESCATAWPA UTILITY DISTRICT FIRE DEPARTMENT          | 2             |
| ETHEL VOLUNTEER FIRE DEPARTMENT                     | 2             |



## 2012 PARTICIPATION REPORT BY ORGANIZATION (Cont.)

| Organization Name                                      | Student Count |
|--|---------------|
| EUDORA VOLUNTEER FIRE DEPARTMENT                       | 14            |
| EUPORA VOLUNTEER FIRE DEPARTMENT                       | 23            |
| EVERGREEN FIRE PROTECTION DIST                         | 7             |
| EVERGREEN-CAROLINA VOLUNTEER FIRE DEPARTMENT           | 13            |
| EXXON-BATON ROUGE REFINERY                             | 35            |
| EXXON-BAYTOWN, TX REFINERY/CHEMICAL PLAN               | 69            |
| EXXON-BILLINGS, MT                                     | 11            |
| FAIRHAVEN VOLUNTEER FIRE DEPARTMENT                    | 13            |
| FAIRVIEW VOLUNTEER FIRE DEPARTMENT                     | 2             |
| FALKNER VOLUNTEER FIRE DEPARTMENT                      | 26            |
| FARMHAVEN VOLUNTEER FIRE DEPARTMENT                    | 7             |
| FARMINGTON VOLUNTEER FIRE DEPARTMENT                   | 23            |
| FAYETTE VOLUNTEER FIRE DEPARTMENT                      | 9             |
| FELLOWSHIP VOLUNTEER FIRE DEPARTMENT                   | 7             |
| FENTON VOLUNTEER FIRE DEPARTMENT                       | 20            |
| FERNWOOD VOLUNTEER FIRE DEPARTMENT                     | 32            |
| FIREFOX/HINDS COUNTY PENAL FARM                        | 58            |
| FIRST CHEMICAL CORPORATION                             | 54            |
| FISHER FERRY VOLUNTEER FIRE DEPARTMENT                 | 25            |
| FLORA FIRE DEPARTMENT                                  | 8             |
| FLORENCE-CITY OF                                       | 9             |
| FLOWOOD FIRE DEPARTMENT                                | 52            |
| FLOWOOD POLICE DEPARTMENT                              | 22            |
| FONTAINEBLEAU VOLUNTEER FIRE DEPARTMENT                | 13            |
| FOREST FIRE DEPARTMENT                                 | 12            |
| FORT BAYOU VOLUNTEER FIRE DEPARTMENT                   | 19            |
| FORT POLK FIRE & EMERGENCY SERVICE                     | 1             |
| FORTS LAKE/FRANKLIN CREEK VOLUNTEER FIRE DEPARTMENT    | 25            |
| FOSTER MOUND VOLUNTEER FIRE DEPARTMENT                 | 15            |
| FOXWORTH VOLUNTEER FIRE DEPARTMENT                     | 16            |
| FRANKLIN COUNTY DISTRICT 5 / VOLUNTEER FIRE DEPARTMENT | 21            |
| FRANKLIN COUNTY SHERIFF'S DEPARTMENT                   | 1             |
| FRENCH CAMP VOLUNTEER FIRE DEPARTMENT                  | 2             |
| FRIENDSHIP VOLUNTEER FIRE DEPARTMENT                   | 11            |
| FULTON FIRE DEPARTMENT                                 | 10            |
| FURRS VOLUNTEER FIRE DEPARTMENT                        | 2             |
| GAUTIER FIRE DEPARTMENT                                | 26            |
| GEESLIN CORNER VOLUNTEER FIRE DEPARTMENT               | 6             |
| GEORGE COUNTY REGIONAL HOSPITAL                        | 1             |
| GEORGETOWN VOLUNTEER FIRE DEPARTMENT                   | 2             |
| GEORGIA GULF   | 41            |
| GIBBSTOWN / LAWRENCE VOLUNTEER FIRE DEPARTMENT         | 5             |
| GLADE VOLUNTEER FIRE DEPARTMENT                        | 18            |





## 2012 PARTICIPATION REPORT BY ORGANIZATION (Cont.)

| Organization Name                               | Student Count |
|---|---------------|
| GLEN VOLUNTEER FIRE DEPARTMENT                  | 10            |
| GLUCKSTADT FIRE PROTECTION DISTRICT             | 27            |
| GOLDEN TRIANGLE REGIONAL AIRPORT/BAPTIST        | 4             |
| GORE SPRINGS VOLUNTEER FIRE DEPARTMENT          | 17            |
| GRACE VOLUNTEER FIRE DEPARTMENT                 | 3             |
| GRANBY VOLUNTEER FIRE DEPARTMENT                | 1             |
| GRAND GULF NUCLEAR STATION                      | 82            |
| GRAVEL HILL VOLUNTEER FIRE DEPARTMENT           | 5             |
| GREENE COUNTY CIVIL DEFENSE                     | 3             |
| GREENFIELD VOLUNTEER FIRE DEPARTMENT            | 2             |
| GREENVILLE FIRE DEPARTMENT                      | 203           |
| GREENWOOD FIRE DEPARTMENT                       | 78            |
| GRENADA FIRE DEPARTMENT                         | 105           |
| GRENADA LAKE MEDICAL CENTER-AMBULANCE SERVICE   | 32            |
| GULF PARK ESTATES/ST. ANDREWS FIRE DISTRICT     | 21            |
| GULFPORT FIRE DEPARTMENT                        | 371           |
| GUNTOWN VOLUNTEER FIRE DEPARTMENT               | 2             |
| H.A.L. VOLUNTEER FIRE DEPARTMENT                | 5             |
| HAMILTON VOLUNTEER FIRE DEPARTMENT/MONROE CTY   | 3             |
| HANCOCK COUNTY EMERGENCY MANAGEMENT             | 4             |
| HANCOCK COUNTY SHERIFF'S DEPARTMENT             | 1             |
| HARMONY/CENTRAL VOLUNTEER FIRE DEPARTMENT       | 2             |
| HARPERVILLE FIRE DEPARTMENT                     | 5             |
| HARRISON COUNTY FIRE COORDINATOR                | 1             |
| HARRISON COUNTY FIRE SERVICE                    | 86            |
| HARRISVILLE VOLUNTEER FIRE DEPARTMENT           | 1             |
| HATLEY VOLUNTEER FIRE DEPARTMENT                | 49            |
| HATTIESBURG FIRE DEPARTMENT                     | 388           |
| HATTIESBURG/LAUREL REGIONAL AIRPORT AUTHORITY   | 4             |
| HAZLEHURST FIRE DEPARTMENT                      | 12            |
| HEBRON VOLUNTEER FIRE DEPARTMENT                | 4             |
| HEIDELBERG VOLUNTEER FIRE DEPARTMENT            | 9             |
| HERNANDO FIRE DEPARTMENT                        | 26            |
| HERNANDO POLICE DEPARTMENT                      | 2             |
| HEUCKS RETREAT VOLUNTEER FIRE DEPARTMENT        | 15            |
| HICKORY FLAT VOLUNTEER FIRE DEPARTMENT          | 7             |
| HICKORY GROVE VOLUNTEER FIRE DEPARTMENT         | 1             |
| HICKORY VOLUNTEER FIRE DEPARTMENT/NEWTON COUNTY | 9             |
| HIGH POINT VOLUNTEER FIRE DEPARTMENT            | 9             |
| HILLSBORO VOLUNTEER FIRE DEPARTMENT             | 12            |
| HINDS COUNTY EMERGENCY MANAGEMENT               | 24            |
| HINDS COUNTY FIRE TRAINING OFFICER              | 1             |
| HINDS COUNTY SHERIFF'S DEPARTMENT               | 7             |



## 2012 PARTICIPATION REPORT BY ORGANIZATION (Cont.)

| Organization Name                         | Student Count |
|---|---------------|
| HINTONVILLE VOLUNTEER FIRE DEPARTMENT     | 1             |
| HOBO-BIG V VOLUNTEER FIRE DEPARTMENT      | 8             |
| HOG CHAIN VOLUNTEER FIRE DEPARTMENT       | 15            |
| HOLCOMB VOLUNTEER FIRE DEPARTMENT         | 1             |
| HOLLANDALE VOLUNTEER FIRE DEPARTMENT      | 8             |
| HOLLY BLUFF VOLUNTEER FIRE DEPARTMENT     | 6             |
| HOLLY SPRINGS FIRE DEPARTMENT             | 147           |
| HOLMES COUNTY SHERIFF'S DEPARTMENT        | 9             |
| HOLTSPUR VOLUNTEER FIRE DEPARTMENT        | 3             |
| HOMEWOOD VOLUNTEER FIRE DEPARTMENT        | 1             |
| HOPE VOLUNTEER FIRE DEPARTMENT            | 4             |
| HORN LAKE FIRE DEPARTMENT                 | 70            |
| HOT COFFEE VOLUNTEER FIRE DEPARTMENT      | 6             |
| HOULKA VOLUNTEER FIRE DEPARTMENT          | 10            |
| HOUSE VOLUNTEER FIRE DEPARTMENT           | 5             |
| HOUSTON FIRE DEPARTMENT                   | 12            |
| HUMPHREYS COUNTY FIRE COORDINATOR         | 1             |
| HUMPHREYS COUNTY SHERIFF'S DEPARTMENT     | 1             |
| HUNTSVILLE AIRPORT                        | 16            |
| HURRICANE VOLUNTEER FIRE DEPARTMENT       | 6             |
| HIGHWAY 84 WEST VOLUNTEER FIRE DEPARTMENT | 6             |
| INDEPENDENCE VOLUNTEER FIRE DEPARTMENT    | 22            |
| INDIANOLA FIRE DEPARTMENT                 | 60            |
| INDUSTRIAL EMERGENCY SERVICES             | 2             |
| INGOMAR VOLUNTEER FIRE DEPARTMENT         | 8             |
| INGRAM VOLUNTEER FIRE DEPARTMENT          | 2             |
| INTERNATIONAL PAPER COMPANY-VICKSBURG     | 25            |
| INVERNESS VOLUNTEER FIRE DEPARTMENT       | 21            |
| ISOLA VOLUNTEER FIRE DEPARTMENT           | 6             |
| ISSAQUENA COUNTY SHERIFF'S DEPARTMENT     | 1             |
| ITAWAMBA COUNTY SHERIFF'S DEPARTMENT      | 3             |
| ITTA BENA VOLUNTEER FIRE DEPARTMENT       | 8             |
| IUKA FIRE DEPARTMENT                      | 6             |
| JACINTO VOLUNTEER FIRE DEPARTMENT         | 15            |
| JACKSON COUNTY EMA                        | 8             |
| JACKSON COUNTY FIRE DISTRICT              | 172           |
| JACKSON COUNTY SHERIFF'S DEPARTMENT       | 76            |
| JACKSON FIRE DEPARTMENT                   | 363           |
| JACKSON MUNICIPAL AIRPORT AUTHORITY       | 3             |
| JACKSON POLICE DEPARTMENT                 | 20            |
| JACKSON-CITY OF-PUBLIC WORKS              | 2             |
| JANICE VOLUNTEER FIRE DEPARTMENT          | 9             |
| JASPER COUNTY SHERIFF'S DEPARTMENT        | 1             |



## 2012 PARTICIPATION REPORT BY ORGANIZATION (Cont.)

| Organization Name                                  | Student Count |
|--|---------------|
| JEFF DAVIS COUNTY SHERIFF'S DEPARTMENT             | 5             |
| JOHNSON VOLUNTEER FIRE DEPARTMENT                  | 6             |
| JONES COUNTY SHERIFF'S DEPARTMENT                  | 1             |
| JUMPERTOWN VOLUNTEER FIRE DEPARTMENT               | 4             |
| KEARNEY PARK VOLUNTEER FIRE DEPARTMENT             | 8             |
| KEESLER AFB/403RD CIVIL ENGINEER SQUAD             | 1             |
| KEMPER COUNTY DISTRICT 3 VOLUNTEER FIRE DEPARTMENT | 14            |
| KEMPER SPRINGS VOLUNTEER FIRE DEPARTMENT           | 15            |
| KILMICHAEL VOLUNTEER FIRE DEPARTMENT               | 1             |
| KILN VOLUNTEER FIRE DEPARTMENT                     | 8             |
| KINGSTON VOLUNTEER FIRE DEPARTMENT                 | 5             |
| KNOBTOWN VOLUNTEER FIRE DEPARTMENT                 | 11            |
| KOSCIUSKO FIRE DEPARTMENT                          | 10            |
| KOSSUTH VOLUNTEER FIRE DEPARTMENT                  | 15            |
| LAFAYETTE COUNTY FIRE DEPARTMENT                   | 201           |
| LAFAYETTE COUNTY SHERIFF'S DEPARTMENT              | 2             |
| LAFAYETTE REGIONAL AIRPORT/RURAL METRO             | 12            |
| LAKE EDDINS VOLUNTEER FIRE DEPARTMENT              | 11            |
| LAKE HARBOR VOLUNTEER FIRE DEPARTMENT              | 2             |
| LAKE MONTROSE VOLUNTEER FIRE DEPARTMENT            | 7             |
| LAKE VOLUNTEER FIRE DEPARTMENT/SCOTT COUNTY        | 11            |
| LAMAR COUNTY FIRE SERVICES                         | 12            |
| LAMAR COUNTY SHERIFF'S DEPARTMENT                  | 2             |
| LAMBERT VOLUNTEER FIRE DEPARTMENT                  | 7             |
| LANGFORD VOLUNTEER FIRE DEPARTMENT                 | 57            |
| LAUDERDALE COUNTY FIRE SERVICES                    | 35            |
| LAUDERDALE COUNTY EMERGENCY MANAGEMENT             | 6             |
| LAUDERDALE VOLUNTEER FIRE DEPARTMENT               | 8             |
| LAUREL FIRE DEPARTMENT                             | 13            |
| LAWRENCE COUNTY FIRE SERVICES                      | 13            |
| LEAKE COUNTY EMA                                   | 2             |
| LEAKE COUNTY FIRE COORDINATOR                      | 1             |
| LEAKE COUNTY SHERIFF'S DEPARTMENT                  | 3             |
| LEAKESVILLE VOLUNTEER FIRE DEPARTMENT              | 1             |
| LEARNED VOLUNTEER FIRE DEPARTMENT                  | 11            |
| LEE COUNTY SHERIFF'S DEPARTMENT                    | 13            |
| LEESBURG VOLUNTEER FIRE DEPARTMENT                 | 31            |
| LEETOWN VOLUNTEER FIRE DEPARTMENT                  | 5             |
| LEFLORE COUNTY CIVIL DEFENSE/HOMELAND SECURITY     | 6             |
| LELAND POLICE DEPARTMENT                           | 4             |
| LETOURNEAU COMMUNITY FIRE DEPARTMENT               | 9             |
| LEWISBURG VOLUNTEER FIRE DEPARTMENT                | 23            |
| LEXIE VOLUNTEER FIRE DEPARTMENT                    | 6             |



## 2012 PARTICIPATION REPORT BY ORGANIZATION (Cont.)

| Organization Name                                   | Student Count |
|---|---------------|
| LIBERTY ROAD VOLUNTEER FIRE DEPARTMENT/ADAMS COUNTY | 12            |
| LIBERTY VOLUNTEER FIRE DEPARTMENT/AMITE COUNTY      | 1             |
| LIZANA VOLUNTEER FIRE DEPARTMENT                    | 13            |
| LONG BEACH FIRE DEPARTMENT                          | 132           |
| LONG CREEK VOLUNTEER FIRE DEPARTMENT                | 5             |
| LONGINO CENTRAL VOLUNTEER FIRE DEPARTMENT           | 1             |
| LONGTOWN VOLUNTEER FIRE DEPARTMENT                  | 1             |
| LONGVIEW VOLUNTEER FIRE DEPARTMENT                  | 2             |
| LOOP, LLC   | 13            |
| LOOXAHOMA VOLUNTEER FIRE DEPARTMENT                 | 9             |
| LORMAN VOLUNTEER FIRE DEPARTMENT                    | 4             |
| LOST GAP VOLUNTEER FIRE DEPARTMENT                  | 5             |
| LOUIN VOLUNTEER FIRE DEPARTMENT                     | 14            |
| LOUISE VOLUNTEER FIRE DEPARTMENT                    | 8             |
| LOUISVILLE FIRE DEPARTMENT                          | 80            |
| LOVE VOLUNTEER FIRE DEPARTMENT                      | 15            |
| LOWNDES COUNTY BAPTIST HOSPITAL AMBULANCE SERVICE   | 15            |
| LOWNDES COUNTY DISTRICT 5/ARTESIA FIRE DEPARTMENT   | 2             |
| LOWNDES COUNTY EMA                                  | 9             |
| LOWNDES COUNTY FIRE SERVICE                         | 1             |
| LOWNDES COUNTY SHERIFF'S DEPARTMENT                 | 8             |
| LOYD STAR VOLUNTEER FIRE DEPARTMENT                 | 21            |
| LSR VOLUNTEER FIRE DEPARTMENT/SUNFLOWER COUNTY      | 16            |
| LUCEDALE FIRE DEPARTMENT                            | 4             |
| LUDLOW VOLUNTEER FIRE DEPARTMENT                    | 9             |
| LUMBERTON VOLUNTEER FIRE DEPARTMENT                 | 53            |
| LYON VOLUNTEER FIRE DEPARTMENT                      | 2             |
| MABEN VOLUNTEER FIRE DEPARTMENT                     | 10            |
| MACEDONIA VOLUNTEER FIRE DEPARTMENT                 | 3             |
| MACON VOLUNTEER FIRE DEPARTMENT                     | 5             |
| MADISON COUNTY FIRE COORDINATOR                     | 1             |
| MADISON COUNTY SHERIFF'S DEPARTMENT                 | 1             |
| MADISON FIRE DEPARTMENT                             | 28            |
| MADISON POLICE DEPARTMENT                           | 21            |
| MAGEE FIRE DEPARTMENT                               | 5             |
| MAGEE POLICE DEPARTMENT                             | 3             |
| MAGNOLIA VOLUNTEER FIRE DEPARTMENT                  | 59            |
| MANTACHIE FIRE DEPARTMENT                           | 30            |
| MANTEE VOLUNTEER FIRE DEPARTMENT                    | 7             |
| MARION COUNTY SHERIFF'S DEPARTMENT                  | 3             |
| MARION VOLUNTEER FIRE & RESCUE                      | 2             |
| MARKS VOLUNTEER FIRE DEPARTMENT                     | 1             |
| MARS HILL VOLUNTEER FIRE DEPARTMENT/AMITE COUNTY    | 8             |





## 2012 PARTICIPATION REPORT BY ORGANIZATION (Cont.)

| Organization Name                                   | Student Count |
|---|---------------|
| MARS HILL VOLUNTEER FIRE DEPARTMENT/WINSTON COUNTY  | 6             |
| MARSHALL COUNTY SHERIFF'S DEPARTMENT                | 9             |
| MARTIN VOLUNTEER FIRE DEPARTMENT                    | 36            |
| MARYDELL/BARNES VOLUNTEER FIRE DEPARTMENT           | 2             |
| MASHULAVILLE VOLUNTEER FIRE DEPARTMENT              | 2             |
| MATHISTON CIVIL DEFENSE-WEBSTER COUNTY              | 1             |
| MATHISTON VOLUNTEER FIRE DEPARTMENT                 | 19            |
| MAYORSVILLE VOLUNTEER FIRE DEPARTMENT               | 13            |
| MCCOMB FIRE DEPARTMENT                              | 170           |
| MCCOMB POLICE DEPARTMENT                            | 8             |
| MCHENRY VOLUNTEER FIRE DEPARTMENT                   | 31            |
| MCLAIN VOLUNTEER FIRE DEPARTMENT                    | 5             |
| MCLAURIN VOLUNTEER FIRE DEPARTMENT                  | 20            |
| MEADVILLE VOLUNTEER FIRE DEPARTMENT                 | 2             |
| MEEHAN VOLUNTEER FIRE DEPARTMENT                    | 28            |
| MELBOURNE AIRPORT AUTHORITY                         | 26            |
| MS EMERGENCY MANAGEMENT AGENCY                      | 6             |
| MEMPHIS, TN FIRE DEPARTMENT                         | 5             |
| MENDENHALL VOLUNTEER FIRE DEPARTMENT                | 42            |
| MERIDIAN FIRE DEPARTMENT                            | 269           |
| MID-DELTA REGIONAL AIRPORT                          | 10            |
| MIDWAY VOLUNTEER FIRE DEPARTMENT/SCOTT COUNTY       | 3             |
| MIDWAY VOLUNTEER FIRE DEPARTMENT/TISHOMINGO CTY DIS | 1             |
| MITCHELL VOLUNTEER FIRE DEPARTMENT                  | 6             |
| MIZE VOLUNTEER FIRE DEPARTMENT                      | 5             |
| MOBILE FIRE & RESCUE DEPARTMENT                     | 26            |
| MONEY VOLUNTEER FIRE DEPARTMENT                     | 3             |
| MONROE COUNTY FIRE COORDINATOR                      | 1             |
| MONROE COUNTY SHERIFF'S DEPARTMENT                  | 25            |
| MONROE FIRE DEPARTMENT                              | 26            |
| MONTEREY VOLUNTEER FIRE DEPARTMENT                  | 6             |
| MONTGOMERY COUNTY SHERIFF'S DEPARTMENT              | 5             |
| MONTICELLO FIRE DEPARTMENT                          | 99            |
| MONTPELIER VOLUNTEER FIRE DEPARTMENT                | 1             |
| MONTROSE VOLUNTEER FIRE DEPARTMENT                  | 8             |
| MOOREVILLE EGGVILLE VOLUNTEER FIRE DEPARTMENT       | 4             |
| MOOREVILLE VOLUNTEER FIRE DEPARTMENT                | 23            |
| MOORHEAD VOLUNTEER FIRE DEPARTMENT                  | 28            |
| MORGAN CITY VOLUNTEER FIRE DEPARTMENT               | 1             |
| MORGANTOWN VOLUNTEER FIRE DEPARTMENT                | 2             |
| MORTON VOLUNTEER FIRE DEPARTMENT                    | 12            |
| MOSELLE VOLUNTEER FIRE DEPARTMENT                   | 19            |
| MOSS POINT FIRE DEPARTMENT                          | 18            |



## 2012 PARTICIPATION REPORT BY ORGANIZATION (Cont.)

| Organization Name                                 | Student Count |
|---|---------------|
| MOSSVILLE VOLUNTEER FIRE DEPARTMENT               | 7             |
| MOUND BAYOU VOLUNTEER FIRE DEPARTMENT             | 4             |
| MOUNT OLIVE VOLUNTEER FIRE DEPARTMENT             | 4             |
| MOUNTAIN WARFARE FIRE DEPARTMENT                  | 1             |
| MOVELLA VOLUNTEER FIRE DEPARTMENT                 | 2             |
| MS AIR GUARD/MERIDIAN/186 REFUELING GROUP         | 30            |
| MS ANG/AIRPORT FIRE DEPARTMENT 172ND CES          | 50            |
| MS DEPARTMENT OF ENVIRONMENTAL QUALITY            | 225           |
| MS DEPARTMENT OF WILDLIFE                         | 1             |
| MS HIGHWAY PATROL/HINDS COUNTY                    | 2             |
| MS STATE PENITENTIARY/PARCHMAN FIRE DEPARTMENT    | 22            |
| MS STATE UNIVERSITY POLICE DEPARTMENT             | 1             |
| MT. NEBO FIRE DEPARTMENT/KEMPER COUNTY DISTRICT 5 | 6             |
| MT. SALEM VOLUNTEER FIRE DEPARTMENT               | 5             |
| MURPHREESBORO VOLUNTEER FIRE DEPARTMENT           | 3             |
| MYRICK & MILL CREEK FIRE DEPARTMENT               | 21            |
| MYRTLE VOLUNTEER FIRE DEPARTMENT                  | 2             |
| N. E. JASPER VOLUNTEER FIRE DEPARTMENT            | 1             |
| N. E. LAUDERDALE VOLUNTEER FIRE DEPARTMENT        | 1             |
| N. BENTON COUNTY VOLUNTEER FIRE DEPARTMENT        | 7             |
| N. CENTRAL AMITE COUNTY VOLUNTEER FIRE DEPARTMENT | 2             |
| N. E. BENTON VOLUNTEER FIRE DEPARTMENT            | 5             |
| N. E. CALHOUN VOLUNTEER FIRE DEPARTMENT           | 7             |
| N. E. CLAY COUNTY/#100 VOLUNTEER FIRE DEPARTMENT  | 2             |
| N. E. ITAWAMBA/FAIRVIEW FIRE DEPARTMENT           | 22            |
| N. E. LAMAR VOLUNTEER FIRE DEPARTMENT             | 18            |
| N. E. PEARL RIVER COUNTY FIRE DEPARTMENT          | 1             |
| N. E. UNION FIRE DEPARTMENT                       | 17            |
| N. E. WARREN COUNTY VOLUNTEER FIRE DEPARTMENT     | 1             |
| N. FORREST COUNTY VOLUNTEER FIRE DEPARTMENT       | 34            |
| N. W. COVINGTON VOLUNTEER FIRE DEPARTMENT         | 6             |
| N. WOOLMARKET VOLUNTEER FIRE DEPARTMENT           | 4             |
| NATCHEZ FIRE DEPARTMENT                           | 84            |
| NATCHEZ-ADAMS COUNTY AIRPORT                      | 5             |
| NAVAL AIR STATION FIRE DEPARTMENT/MERIDIAN        | 1             |
| NEELY VOLUNTEER FIRE DEPARTMENT                   | 5             |
| NESBIT VOLUNTEER FIRE DEPARTMENT                  | 4             |
| NESHOBA COUNTY EMA                                | 2             |
| NESHOBA COUNTY SHERIFF'S DEPARTMENT               | 1             |
| NETTLETON VOLUNTEER FIRE DEPARTMENT               | 3             |
| NEW ALBANY FIRE DEPARTMENT                        | 32            |
| NEW AUGUSTA VOLUNTEER FIRE DEPARTMENT             | 20            |
| NEW HEBRON VOLUNTEER FIRE/RESCUE                  | 23            |



## 2012 PARTICIPATION REPORT BY ORGANIZATION (Cont.)

| Organization Name                                   | Student Count |
|---|---------------|
| NEW HOPE VOLUNTEER FIRE DEPARTMENT/KEMPER COUNTY    | 5             |
| NEW ORLEANS FIRE DEPARTMENT                         | 4             |
| NEW SIGHT VOLUNTEER FIRE DEPARTMENT/ LINCOLN COUNTY | 18            |
| NEW SITE VOLUNTEER FIRE DEPARTMENT/PRENTISS COUNTY  | 10            |
| NEWTON COUNTY FIRE COORDINATOR                      | 1             |
| NEWTON COUNTY FIRE SERVICES                         | 1             |
| NEWTON COUNTY 911                                   | 11            |
| NEWTON COUNTY EMERGENCY MANAGEMENT                  | 1             |
| NEWTON FIRE DEPARTMENT                              | 46            |
| NICHOLSON VOLUNTEER FIRE DEPARTMENT                 | 2             |
| NORANDA ALUMINA                                     | 26            |
| NORTH OKALOOSA FIRE DISTRICT                        | 28            |
| NORTH PLEASANT HILL FIRE DEPARTMENT                 | 16            |
| NORTH TUNICA COUNTY FIRE PROTECTION DISTRICT        | 24            |
| NOXAPATER VOLUNTEER FIRE DEPARTMENT                 | 1             |
| OAK BOWERY VOLUNTEER FIRE DEPARTMENT                | 6             |
| OAK GROVE VOLUNTEER FIRE DEPARTMENT/WALTHALL COUNTY | 8             |
| OAK GROVE/BEAT 4 LAMAR COUNTY FIRE DEPARTMENT       | 16            |
| OAKVALE VOLUNTEER FIRE DEPARTMENT                   | 5             |
| OCEAN SPRINGS FIRE DEPARTMENT                       | 40            |
| OKOLONA FIRE DEPARTMENT                             | 28            |
| OKTIBBEHA COUNTY DISTRICT 5 FIRE DEPARTMENT         | 14            |
| OKTIBBEHA COUNTY SHERIFF'S DEPARTMENT               | 2             |
| OLIVE BRANCH FIRE DEPARTMENT                        | 61            |
| OLOH VOLUNTEER FIRE DEPARTMENT                      | 6             |
| OMA VOLUNTEER FIRE DEPARTMENT                       | 12            |
| O'NEIL VOLUNTEER FIRE DEPARTMENT                    | 3             |
| OSYKA VOLUNTEER FIRE DEPARTMENT                     | 17            |
| OVETT VOLUNTEER FIRE DEPARTMENT                     | 10            |
| OXFORD FIRE DEPARTMENT                              | 59            |
| PACHUTA VOLUNTEER FIRE DEPARTMENT                   | 20            |
| PADEN VOLUNTEER FIRE DEPARTMENT                     | 2             |
| PANOLA COUNTY CIVIL DEFENSE                         | 1             |
| PANOLA COUNTY SHERIFF'S DEPARTMENT                  | 4             |
| PARKER FIRE DEPARTMENT                              | 3             |
| PASCAGOULA FIRE DEPARTMENT                          | 36            |
| PASCAGOULA POLICE DEPARTMENT                        | 4             |
| PASS CHRISTIAN FIRE DEPARTMENT                      | 37            |
| PASS CHRISTIAN POLICE DEPARTMENT                    | 7             |
| PAULDING VOLUNTEER FIRE DEPARTMENT                  | 16            |
| PAYNES VOLUNTEER FIRE DEPARTMENT                    | 18            |
| PCS NITROGEN  | 15            |
| PEARL FIRE DEPARTMENT                               | 88            |



## 2012 PARTICIPATION REPORT BY ORGANIZATION (Cont.)

| Organization Name                                   | Student Count |
|---|---------------|
| PEARL POLICE DEPARTMENT                             | 12            |
| PEARL RIVER COUNTY SHERIFF'S DEPARTMENT             | 1             |
| PELAHATCHIE VOLUNTEER FIRE DEPARTMENT               | 74            |
| PELAHATCHIE-TOWN OF                                 | 24            |
| PERKINSTON VOLUNTEER FIRE DEPARTMENT                | 12            |
| PERRY COUNTY CIVIL DEFENSE                          | 1             |
| PERRY COUNTY SHERIFF'S DEPARTMENT                   | 5             |
| PETAL FIRE DEPARTMENT                               | 26            |
| PHEBA VOLUNTEER FIRE DEPARTMENT/CLAY COUNTY # 500   | 7             |
| PHILADELPHIA FIRE DEPARTMENT                        | 28            |
| PICAYUNE FIRE DEPARTMENT                            | 46            |
| PICKENS VOLUNTEER FIRE DEPARTMENT                   | 2             |
| PIKE COUNTY CIVIL DEFENSE                           | 2             |
| PINE BURR VOLUNTEER FIRE DEPARTMENT                 | 1             |
| PINE GROVE VOLUNTEER FIRE DEPARTMENT                | 1             |
| PINE RIDGE VOLUNTEER FIRE DEPARTMENT                | 11            |
| PINEDALE VOLUNTEER FIRE DEPARTMENT                  | 1             |
| PINEVILLE VOLUNTEER FIRE DEPARTMENT                 | 5             |
| PINOLA VOLUNTEER FIRE DEPARTMENT                    | 2             |
| PISGAH COMMUNITY FIRE DEPARTMENT                    | 10            |
| PITTSBORO VOLUNTEER FIRE DEPARTMENT                 | 8             |
| PLANTERSVILLE VOLUNTEER FIRE DEPARTMENT             | 7             |
| PLEASANT GROVE VOLUNTEER FIRE DEPARTMENT/PANOLA CTY | 2             |
| PLEASANT RIDGE VOLUNTEER FIRE DEPARTMENT            | 5             |
| POAGVILLE VOLUNTEER FIRE DEPARTMENT                 | 2             |
| POCAHONTAS VOLUNTEER FIRE DEPARTMENT                | 44            |
| POLKVILLE VOLUNTEER FIRE DEPARTMENT                 | 3             |
| PONTOTOC COUNTY SHERIFF'S DEPARTMENT                | 2             |
| PONTOTOC FIRE DEPARTMENT                            | 8             |
| POPE VOLUNTEER FIRE DEPARTMENT                      | 29            |
| POPLAR CREEK VOLUNTEER FIRE DEPARTMENT              | 3             |
| POPLARVILLE FIRE DEPARTMENT                         | 25            |
| PORTERVILLE VOLUNTEER FIRE DEPARTMENT               | 7             |
| POTTS CAMP VOLUNTEER FIRE DEPARTMENT                | 1             |
| POWERS VOLUNTEER FIRE DEPARTMENT                    | 22            |
| PRAIRIE VOLUNTEER FIRE DEPARTMENT                   | 6             |
| PRENTISS COUNTY 911                                 | 3             |
| PRENTISS COUNTY FIRE COORDINATOR                    | 1             |
| PRENTISS COUNTY SHERIFF'S DEPARTMENT                | 3             |
| PRENTISS FIRE DEPARTMENT                            | 3             |
| PRESTON FIRE DEPARTMENT/KEMPER COUNTY DISTRICT 4    | 17            |
| PROGRESS VOLUNTEER FIRE DEPARTMENT/PIKE COUNTY      | 24            |
| PROVIDENCE STATION VOLUNTEER FIRE DEPARTMENT        | 3             |





## 2012 PARTICIPATION REPORT BY ORGANIZATION (Cont.)

| Organization Name                                  | Student Count |
|--|---------------|
| PURVIS POLICE DEPARTMENT                           | 6             |
| PURVIS VOLUNTEER FIRE DEPARTMENT                   | 8             |
| QUITMAN COUNTY SHERIFF'S DEPARTMENT                | 4             |
| QUITMAN VOLUNTEER FIRE DEPARTMENT                  | 7             |
| RALEIGH VOLUNTEER FIRE DEPARTMENT                  | 2             |
| RAMSEY SPRINGS VOLUNTEER FIRE DEPARTMENT           | 3             |
| RANDOLPH VOLUNTEER FIRE DEPARTMENT                 | 7             |
| RANKIN COUNTY EOC                                  | 7             |
| RANKIN COUNTY SHERIFF'S DEPARTMENT                 | 6             |
| RAWLS SPRINGS VOLUNTEER FIRE DEPARTMENT            | 9             |
| REDLICK VOLUNTEER FIRE DEPARTMENT                  | 2             |
| REFORM VOLUNTEER FIRE DEPARTMENT/CHOCTAW COUNTY    | 2             |
| REFORMATION VOLUNTEER FIRE DEPARTMENT/LEAKE COUNTY | 1             |
| RENA LARA VOLUNTEER FIRE DEPARTMENT                | 1             |
| RESERVOIR FIRE PROTECTION DISTRICT                 | 31            |
| RHODES CHAPEL VOLUNTEER FIRE DEPARTMENT            | 16            |
| RHODIA CHEMICAL                                    | 29            |
| RICHLAND FIRE DEPARTMENT                           | 27            |
| RICHMOND VOLUNTEER FIRE DEPARTMENT                 | 3             |
| RICHTON VOLUNTEER FIRE DEPARTMENT                  | 7             |
| RIDGELAND FIRE DEPARTMENT                          | 32            |
| RIENZI VOLUNTEER FIRE DEPARTMENT                   | 3             |
| RIVERSIDE VOLUNTEER FIRE DISTRICT                  | 5             |
| ROBINHOOD VOLUNTEER FIRE DEPARTMENT                | 9             |
| ROCK HILL VOLUNTEER FIRE DEPARTMENT                | 12            |
| ROCKY CREEK VOLUNTEER FIRE DEPARTMENT              | 1             |
| ROLLING CREEK VOLUNTEER FIRE DEPARTMENT            | 7             |
| ROLLING FORK VOLUNTEER FIRE DEPARTMENT             | 25            |
| ROSE HILL VOLUNTEER FIRE DEPARTMENT                | 4             |
| ROSEBLOOM VOLUNTEER FIRE DEPARTMENT                | 2             |
| ROSEDALE VOLUNTEER FIRE DEPARTMENT                 | 6             |
| ROXIE VOLUNTEER FIRE DEPARTMENT                    | 5             |
| RULEVILLE VOLUNTEER FIRE DEPARTMENT                | 11            |
| RUNNELSTOWN VOLUNTEER FIRE DEPARTMENT              | 7             |
| RURAL HILL VOLUNTEER FIRE DEPARTMENT               | 3             |
| RURAL METRO FIRE DEPARTMENT/SIKORSKY               | 12            |
| RURAL METRO FIRE RESCUE/W. PALM BEACH              | 12            |
| RUSSELL FIRE & RESCUE                              | 3             |
| RUTH VOLUNTEER FIRE DEPARTMENT                     | 6             |
| S. E. CLAY COUNTY/# 700 FIRE DEPARTMENT            | 4             |
| S. E. COVINGTON VOLUNTEER FIRE DEPARTMENT          | 17            |
| S. E. LAMAR VOLUNTEER FIRE DEPARTMENT              | 5             |
| S. E. UNION FIRE DEPARTMENT                        | 15            |



## 2012 PARTICIPATION REPORT BY ORGANIZATION (Cont.)

| Organization Name                                      | Student Count |
|--|---------------|
| S. JONES VOLUNTEER FIRE DEPARTMENT                     | 3             |
| S. LAUDERDALE VOLUNTEER FIRE DEPARTMENT                | 5             |
| S. MARION VOLUNTEER FIRE DEPARTMENT                    | 25            |
| S. W. ALCORN VOLUNTEER FIRE DEPARTMENT                 | 1             |
| S. W. COVINGTON VOLUNTEER FIRE DEPARTMENT              | 1             |
| S. W. JONES VOLUNTEER FIRE DEPARTMENT                  | 3             |
| S. W. LAMAR VOLUNTEER FIRE DEPARTMENT                  | 8             |
| S. W. MADISON FIRE DEPARTMENT                          | 18            |
| SALLIS FIRE DEPARTMENT/ATTALA COUNTY BEAT 4            | 7             |
| SALTILLO FIRE DEPARTMENT                               | 16            |
| SANDERSVILLE VOLUNTEER FIRE DEPARTMENT                 | 18            |
| SAND HILL FIRE DEPARTMENT/GREENE COUNTY BEAT 3         | 3             |
| SARDIS LOWER LAKE FIRE DEPARTMENT                      | 18            |
| SARDIS VOLUNTEER FIRE DEPARTMENT                       | 40            |
| SAUCIER VOLUNTEER FIRE DEPARTMENT                      | 22            |
| SAVANNAH FIRE DEPARTMENT/NOXUBEE COUNTY DISTRICT 2     | 2             |
| SCHLATER VOLUNTEER FIRE DEPARTMENT                     | 1             |
| SCOOBA VOLUNTEER FIRE DEPARTMENT                       | 5             |
| SENATOBIA FIRE DEPARTMENT                              | 83            |
| SHADY GROVE VOLUNTEER FIRE DEPARTMENT                  | 7             |
| SHANNON VOLUNTEER FIRE DEPARTMENT                      | 8             |
| SHARKEY COUNTY SHERIFF'S DEPARTMENT                    | 1             |
| SHARKEY HAMPTON VOLUNTEER FIRE DEPARTMENT              | 6             |
| SHARON VOLUNTEER FIRE DEPARTMENT                       | 5             |
| SHELBY VOLUNTEER FIRE DEPARTMENT/ BOLIVAR CTY DISTRICT | 1             |
| SHELL ROAD VOLUNTEER FIRE DEPARTMENT                   | 6             |
| SHERMAN VOLUNTEER FIRE DEPARTMENT                      | 13            |
| SHIPMAN VOLUNTEER FIRE DEPARTMENT                      | 9             |
| SHUBUTA VOLUNTEER FIRE DEPARTMENT                      | 7             |
| SHUQUALAK VOLUNTEER FIRE DEPARTMENT                    | 9             |
| SILVER CREEK VOLUNTEER FIRE DEPARTMENT                 | 8             |
| SILVER RUN VOLUNTEER FIRE DEPARTMENT                   | 9             |
| SIMPSON COUNTY FIRE STATION # 7                        | 2             |
| SIMPSON COUNTY SHERIFF'S DEPARTMENT                    | 3             |
| SIMPSON VOLUNTEER FIRE DEPARTMENT                      | 2             |
| SIPSEY RIVER VOLUNTEER FIRE DEPARTMENT                 | 1             |
| SLAYDEN-MT. PLEASANT FIRE DEPARTMENT                   | 10            |
| SMITH COUNTY EMA                                       | 1             |
| SMITH COUNTY SHERIFF'S DEPARTMENT                      | 2             |
| SMITHDALE VOLUNTEER FIRE DEPARTMENT                    | 2             |
| SNELL VOLUNTEER FIRE DEPARTMENT                        | 16            |
| SNOHOMISH COUNTY FIRE DISTRICT, WA                     | 1             |
| SNOW LAKE VOLUNTEER FIRE DEPARTMENT                    | 11            |



## 2012 PARTICIPATION REPORT BY ORGANIZATION (Cont.)

| Organization Name                                     | Student Count |
|---|---------------|
| SONTAG VOLUNTEER FIRE DEPARTMENT                      | 19            |
| SOSO VOLUNTEER FIRE DEPARTMENT                        | 1             |
| SOUTH MS CORRECTIONAL FACILITY                        | 13            |
| SOUTHAVEN FIRE DEPARTMENT                             | 180           |
| SOUTHAVEN POLICE DEPARTMENT                           | 6             |
| SOUTHEAST PEARL RIVER VOLUNTEER FIRE DEPARTMENT       | 19            |
| SPLUNGE VOLUNTEER FIRE DEPARTMENT                     | 3             |
| SPOUT SPRINGS VOLUNTEER FIRE DEPARTMENT               | 8             |
| SPRING HILL VOLUNTEER FIRE DEPARTMENT/KEMPER COUNTY   | 9             |
| SPRINGHILL VOLUNTEER FIRE DEPARTMENT/TALLAHATCHIE CO. | 8             |
| ST. TAMMANY, LA FIRE DIST #1                          | 19            |
| ST. TAMMANY, LA FIRE DIST. #4                         | 10            |
| STALLO VOLUNTEER FIRE DEPARTMENT                      | 1             |
| STAR VOLUNTEER FIRE DEPARTMENT                        | 24            |
| STARKVILLE FIRE DEPARTMENT                            | 99            |
| STATE FIRE MARSHAL'S OFFICE                           | 39            |
| STATE LINE VOLUNTEER FIRE DEPARTMENT                  | 1             |
| STEEP HOLLOW VOLUNTEER FIRE DEPARTMENT                | 1             |
| STEWART VOLUNTEER FIRE DEPARTMENT                     | 4             |
| STOLTHAVEN NEW ORLEANS, LLC                           | 22            |
| STONE COUNTY CIVIL DEFENSE                            | 8             |
| STONE COUNTY FIRE TRAINING OFFICER                    | 1             |
| STONE COUNTY SHERIFF'S DEPARTMENT                     | 4             |
| STONEWALL VOLUNTEER FIRE DEPARTMENT                   | 5             |
| STREET VOLUNTEER FIRE DEPARTMENT                      | 2             |
| STRINGER VOLUNTEER FIRE DEPARTMENT                    | 11            |
| STRONG HOPE VOLUNTEER FIRE DEPARTMENT                 | 5             |
| STURGIS/DIST. 4 VOLUNTEER FIRE DEPARTMENT             | 7             |
| SUMMERSHILL VOLUNTEER FIRE DEPARTMENT                 | 2             |
| SUMMIT VOLUNTEER FIRE DEPARTMENT/PIKE COUNTY          | 28            |
| SUMRALL VOLUNTEER FIRE DEPARTMENT                     | 7             |
| SUNFLOWER VOLUNTEER FIRE DEPARTMENT                   | 12            |
| SUNNYHILL VOLUNTEER FIRE DEPARTMENT                   | 11            |
| SUNRISE VOLUNTEER FIRE DEPARTMENT                     | 18            |
| SUQUALENA VOLUNTEER FIRE DEPARTMENT                   | 9             |
| SYLVARENA VOLUNTEER FIRE DEPARTMENT/SMITH COUNTY      | 2             |
| SYLVARENA VOLUNTEER FIRE DEPARTMENT/YALOBUSHA COUNTY  | 1             |
| TALLAHATCHIE COUNTY FIRE COORDINATOR                  | 4             |
| TALLAHATCHIE COUNTY SHERIFF'S DEPARTMENT              | 1             |
| TASK FORCE 1 - MISSISSIPPI                            | 27            |
| TASK FORCE 2 - MISSISSIPPI                            | 36            |
| TASK FORCE 3 - MISSISSIPPI                            | 26            |
| TATE COUNTY CIVIL DEFENSE                             | 1             |



## 2012 PARTICIPATION REPORT BY ORGANIZATION (Cont.)

| Organization Name                                  | Student Count |
|--|---------------|
| TATE COUNTY DISTRICT 1 FIRE DEPARTMENT             | 12            |
| TATE COUNTY FIRE COORDINATOR                       | 1             |
| TATE COUNTY SHERIFF'S DEPARTMENT                   | 5             |
| TAYLORSVILLE VOLUNTEER FIRE DEPARTMENT             | 1             |
| TEASDALE VOLUNTEER FIRE DEPARTMENT                 | 4             |
| TERRY VOLUNTEER FIRE DEPARTMENT                    | 2             |
| THAXTON VOLUNTEER FIRE DEPARTMENT                  | 22            |
| THEADVILLE VOLUNTEER FIRE DEPARTMENT               | 17            |
| THOMASTOWN VOLUNTEER FIRE DEPARTMENT               | 2             |
| THORN VOLUNTEER FIRE DEPARTMENT                    | 22            |
| THRASHER VOLUNTEER FIRE DEPARTMENT                 | 6             |
| THREE FORKS FIRE DEPARTMENT                        | 2             |
| THREE MILE CORNER VOLUNTEER FIRE DEPARTMENT        | 3             |
| THREE RIVERS VOLUNTEER FIRE DEPARTMENT             | 6             |
| TIBBEE VOLUNTEER FIRE DEPARTMENT/CLAY COUNTY #200  | 4             |
| TIE PLANT VOLUNTEER FIRE DEPARTMENT                | 16            |
| TILDEN-NEW SALEM FIRE DEPARTMENT                   | 28            |
| TILLATOBA VOLUNTEER FIRE DEPARTMENT                | 8             |
| TIPPAH COUNTY FIRE COORDINATOR                     | 3             |
| TIPPAH COUNTY SHERIFF'S DEPARTMENT                 | 5             |
| TISHOMINGO COUNTY FIRE COORDINATOR                 | 1             |
| TISHOMINGO FIRE DEPARTMENT                         | 1             |
| TOCCOPOLA VOLUNTEER FIRE DEPARTMENT                | 1             |
| TOMNOLEN VOLUNTEER FIRE DEPARTMENT                 | 20            |
| TOOMSUBA VOLUNTEER FIRE DEPARTMENT                 | 25            |
| TOPEKA/DIST 3 VOLUNTEER FIRE DEPARTMENT            | 44            |
| TREMONT/DIST. 4 VOLUNTEER FIRE DEPARTMENT          | 6             |
| TRI-COMMUNITY VOLUNTEER FIRE DEPARTMENT/MARION CO. | 31            |
| TRI-COMMUNITY VOLUNTEER FIRE DEPARTMENT/YAZOO CO.  | 17            |
| TROY-WOODLAND VOLUNTEER FIRE DEPARTMENT            | 4             |
| TUCKER VOLUNTEER FIRE DEPARTMENT                   | 6             |
| TUNICA COUNTY EMA                                  | 2             |
| TUNICA COUNTY SHERIFF'S DEPARTMENT                 | 10            |
| TUNICA VOLUNTEER FIRE DEPARTMENT                   | 53            |
| TUPELO AIRPORT AUTHORITY                           | 4             |
| TUPELO FIRE DEPARTMENT                             | 73            |
| TUPELO POLICE DEPARTMENT                           | 5             |
| TUSCUMBIA/NEW CHANDLER VOLUNTEER FIRE DEPARTMENT   | 7             |
| TUTWILER VOLUNTEER FIRE DEPARTMENT                 | 4             |
| TWIN CREEK VOLUNTEER FIRE DEPARTMENT               | 5             |
| TYLERTOWN VOLUNTEER FIRE DEPARTMENT                | 6             |
| U.S. ENVIRONMENTAL SERVICES                        | 13            |
| UNA VOLUNTEER FIRE DEPARTMENT/CLAY COUNTY # 400    | 1             |





## 2012 PARTICIPATION REPORT BY ORGANIZATION (Cont.)

| Organization Name                                  | Student Count |
|--|---------------|
| UNCODED DEPARTMENT OR INDUSTRY                     | 129           |
| UNION CHURCH VOLUNTEER FIRE DEPARTMENT             | 9             |
| UNION COUNTY SHERIFF'S DEPARTMENT                  | 1             |
| UNION VOLUNTEER FIRE DEPARTMENT/CHOCTAW COUNTY     | 1             |
| UNION VOLUNTEER FIRE DEPARTMENT/JONES COUNTY       | 3             |
| UNION VOLUNTEER FIRE DEPARTMENT/NEWTON COUNTY      | 2             |
| UNION VOLUNTEER FIRE DEPARTMENT/PANOLA COUNTY      | 3             |
| UNITY VOLUNTEER FIRE DISTRICT                      | 3             |
| UNIVERSITY OF MISSISSIPPI POLICE DEPARTMENT        | 21            |
| USES   | 1             |
| VA MEDICAL CENTER                                  | 1             |
| VAIDEN VOLUNTEER FIRE DEPARTMENT                   | 18            |
| VALERO REFINING-MERAUX LLC                         | 23            |
| VALLEY GROVE VOLUNTEER FIRE DEPARTMENT             | 5             |
| VALLEY HILL VOLUNTEER FIRE DEPARTMENT              | 3             |
| VAN VLEET VOLUNTEER FIRE DEPARTMENT                | 16            |
| VARDAMAN VOLUNTEER FIRE DEPARTMENT                 | 13            |
| VAUGHN VOLUNTEER FIRE DEPARTMENT                   | 1             |
| VERONA FIRE DEPARTMENT                             | 14            |
| VICKSBURG FIRE DEPARTMENT                          | 257           |
| VICTORIA FIRE DEPARTMENT                           | 2             |
| VIMVILLE VOLUNTEER FIRE DEPARTMENT                 | 8             |
| WALLS FIRE DEPARTMENT                              | 54            |
| WALNUT GROVE VOLUNTEER FIRE DEPARTMENT             | 5             |
| WALNUT VOLUNTEER FIRE DEPARTMENT                   | 9             |
| WALTERS VOLUNTEER FIRE DEPARTMENT                  | 3             |
| WALTHALL COUNTY 3RD DIST FIRE DEPARTMENT           | 8             |
| WALTHALL COUNTY 4TH DIST VOLUNTEER FIRE DEPARTMENT | 10            |
| WALTHALL COUNTY FIRE COORDINATOR                   | 1             |
| WALTHALL COUNTY SHERIFF'S DEPARTMENT               | 2             |
| WALTHALL VOLUNTEER FIRE DEPARTMENT                 | 5             |
| WARD VOLUNTEER FIRE DEPARTMENT                     | 1             |
| WARREN COUNTY FIRE COORDINATOR                     | 1             |
| WARREN COUNTY FIRE SERVICE                         | 1             |
| WARREN COUNTY SHERIFF'S DEPARTMENT                 | 1             |
| WASHINGTON COUNTY SHERIFF'S DEPARTMENT             | 6             |
| WATER VALLEY FIRE DEPARTMENT                       | 6             |
| WATERFORD VOLUNTEER FIRE DEPARTMENT                | 8             |
| WATSON VOLUNTEER FIRE DEPARTMENT                   | 13            |
| WAVELAND FIRE DEPARTMENT                           | 3             |
| WAYNE COUNTY CENTRAL FIRE STATION                  | 55            |
| WAYNE COUNTY GENERAL HOSPITAL                      | 10            |
| WAYNE COUNTY TRAINING OFFICER                      | 1             |



## 2012 PARTICIPATION REPORT BY ORGANIZATION (Cont.)

| Organization Name                       | Student Count |
|---|---------------|
| WAYNESBORO FIRE DEPARTMENT              | 6             |
| WEBB CITY VOLUNTEER FIRE DEPARTMENT     | 1             |
| WEBSTER COUNTY CIVIL DEFENSE            | 2             |
| WEBSTER COUNTY SHERIFF'S DEPARTMENT     | 8             |
| WEIR VOLUNTEER FIRE DEPARTMENT          | 17            |
| WENASOGA VOLUNTEER FIRE DEPARTMENT      | 8             |
| WESSON VOLUNTEER FIRE DEPARTMENT        | 49            |
| WEST HANCOCK VOLUNTEER FIRE DEPARTMENT  | 27            |
| WEST HARRISON VOLUNTEER FIRE DEPARTMENT | 8             |
| WEST HINDS VOLUNTEER FIRE DEPARTMENT    | 5             |
| WEST POINT FIRE DEPARTMENT              | 24            |
| WHEELER VOLUNTEER FIRE DEPARTMENT       | 13            |
| WIGGINS FIRE DEPARTMENT                 | 21            |
| WILKINSON COUNTY FIRE COORDINATOR       | 1             |
| WINONA FIRE DEPARTMENT                  | 6             |
| WINSTON COUNTY FIRE COORDINATOR         | 1             |
| WINSTON COUNTY SHERIFF'S DEPARTMENT     | 1             |
| WOODLAND VOLUNTEER FIRE DEPARTMENT      | 8             |
| WOODVILLE VOLUNTEER FIRE DEPARTMENT     | 27            |
| YALOBUSHA COUNTY SHERIFF'S DEPARTMENT   | 1             |
| YAZOO CITY FIRE DEPARTMENT              | 20            |
| YAZOO COUNTY SHERIFF'S DEPARTMENT       | 2             |
| ZAMA VOLUNTEER FIRE DEPARTMENT          | 4             |
| ZETUS VOLUNTEER FIRE DEPARTMENT         | 16            |



"Making A Difference When It Matters The Most"