

MISSISSIPPI STATE FIRE ACADEMY



ANNUAL REPORT

FISCAL YEAR 2013

A DIVISION OF THE MISSISSIPPI INSURANCE DEPARTMENT



Mississippi State Fire Academy Advisory Board

President of the
Mississippi Fire Chiefs Association
Chief Scott Berry

President of the
Mississippi Fire Fighters Association
Chief John Pope

State Fire Marshal's Office
Chief Deputy Ricky Davis

President of the
Mississippi Association of Supervisors
Mr. Paul Mosley

President of the
Mississippi Municipal Association
Mayor Tim Waldrup

Manager of the
State Rating Bureau
Mr. Joe Shumaker



Index

Advisory Board.....	2
Index.....	3
Executive Summary.....	4
From Executive Director Reggie Bell.....	5
Introduction.....	6
Organizational Chart.....	7
State Fire Academy of Mississippi Financial Statement.....	8
Grant Information.....	9
Statistics.....	10
Students Trained by County of Sending Organization.....	11
Certification Bureau.....	12-13
Extension Services Bureau.....	14-15
Special/Industrial Bureau.....	16-17
Other Training & Services.....	18-19
Associate Instructors.....	20
Organizational Affiliates.....	21
FY 2013 Participation Report by Type of Program.....	22-27
FY 2013 Participation Report by Organization.....	28-46



It is with great pleasure that I present to you the 2013 Annual Report of the Mississippi State Fire Academy. Two thousand thirteen was a tremendous year for the Academy, marked by major accomplishments that promote our commitment to excellence and our dedication to service.

We would like to thank you for your continued support of the fire service in the State of Mississippi and the State Fire Academy as we continue to be one of the nation's best fire and emergency response training centers.

A handwritten signature in blue ink that reads "Reggie Bell".

Executive Director



From Executive Director Reggie Bell

When the Mississippi legislature created the Mississippi State Fire Academy and designated it as the agency for training the state's fire personnel, I am certain they could not have foreseen the growth and progress that would shape the Academy as it exists today. Many changes have occurred in the forty years since the Academy was built. We now train approximately 15,000 students per year by offering more than ninety courses, many with multiple deliveries, and many offered both on campus and off-site through our field delivery program. Our students come from career and volunteer fire departments throughout Mississippi, fire departments outside the state, and even from the private sector. Over the years, business and industrial entities including many Fortune 500 companies have entrusted the Mississippi State Fire Academy with training their employees in fire and emergency response.

Certainly, technology has advanced tremendously in the last forty years, and the Mississippi State Fire Academy remains at the forefront of that advancement. Classrooms and other facilities on campus are equipped with wireless Internet, webcasting, and teleconferencing capabilities. These assets provide us the flexibility to innovate our instruction methods and course delivery platforms as the needs of the students, and the departments and communities they serve, change. We are also well-positioned to continue to adapt in a constantly evolving technological world.

In addition to training those who seek careers in fire fighting and emergency response, we consider it a vital part of our mission to educate ordinary Mississippi citizens about fire prevention and safety. To that end, we offer schools, clubs, and civic groups the opportunity to visit our campus, tour the facilities, and learn how they can help minimize the potential for loss of life and property due to fire. There is no charge for these tours.

A program that has gained tremendous attention is our Fire Academy for Elected/Public Officials. This program is designed to be a fun day. It familiarizes the elected/public officials with the basic duties and operations of their local fire departments. Elected/public officials from state, municipal, and county governments have attended this one-day course. Fire departments have benefitted from the experience and knowledge their government leaders gain in this course.

I am proud to say that for the past forty years and far into the future, the Mississippi State Fire Academy has been and will be...

"Making a Difference When It Matters the Most..."



Introduction

Mississippi Code Annotated 1972, Section 45-11-7 (1) creates the State Fire Academy for the purpose of training and education of persons engaged in municipal, county, and industrial fire protection and designates it as a division of the Mississippi Insurance Department. Section 45-11-7 (4) officially designates the Academy as the agency of the state to conduct training for fire personnel on a statewide basis in which members of all duly constituted fire departments may participate. Section 45-11-203 states that the uniform training standards for all paid fire fighters shall consist of the satisfactory completion of a training program administered by the State Fire Academy. Section 83-1-39 requires one member of the sheriff's department be the county fire investigator and to attend training at the State Fire Academy in arson investigation.

Constructed in 1975, the Academy campus is located on approximately 112 acres with twenty-three buildings. Student course length varies from one day to six weeks. Students stay on campus in the dormitory, which has seventy-five beds, and are provided two meals a day in the cafeteria. Being a self-contained facility, our staff is responsible for all routine maintenance to the facility grounds, buildings, vehicles, and repairs to any equipment used for this upkeep and equipment/props used for student training.

The Academy is currently one hundred percent (100%) special funded through a tax of one half of one percent (1/2 of 1%) of the gross premium receipts of insurance policies sold in the state, and course collection fees. Personnel services account for approximately 68% of the overall Academy budget, and that is an area that will continue to grow in order to keep the current level of professional staff for training and to maintain the status as the number one training facility.

The Academy began receiving federal grant funds during fiscal year 2001, and it is anticipated that this funding should continue. The grants are for specialized training in Terrorism Response, Hazardous Materials Incidents, National Incident Management Systems (NIMS) and National Fire Academy courses. The grants are one-hundred percent reimbursable in federal grant or sub-grant funds. Classes are taught on and off campus on a request basis at low or no cost to the departments around the state. The Academy continues to secure grants on a state and federal level to upgrade our facilities and provide the highest levels of emergency response training available anywhere.

The Academy continues to be one of the nation's most outstanding fire protection training centers and carries out its duties of serving and protecting Mississippians and visitors to our great state with tremendous skill and dedication. The innovative thinking, policy and procedures have resulted in many lives saved and safer communities, serving over 15,000 fire fighters from across the state. Mississippi fire service personnel represent some of the best-trained fire fighters in the nation. The training programs delivered at the Academy are dynamic in nature in order to provide technological support and to meet changing standards for all Mississippi fire fighters.

OUR MISSION IS:

"TO SERVE THE MISSISSIPPI FIRE SERVICE COMMUNITY AND THE WORLD

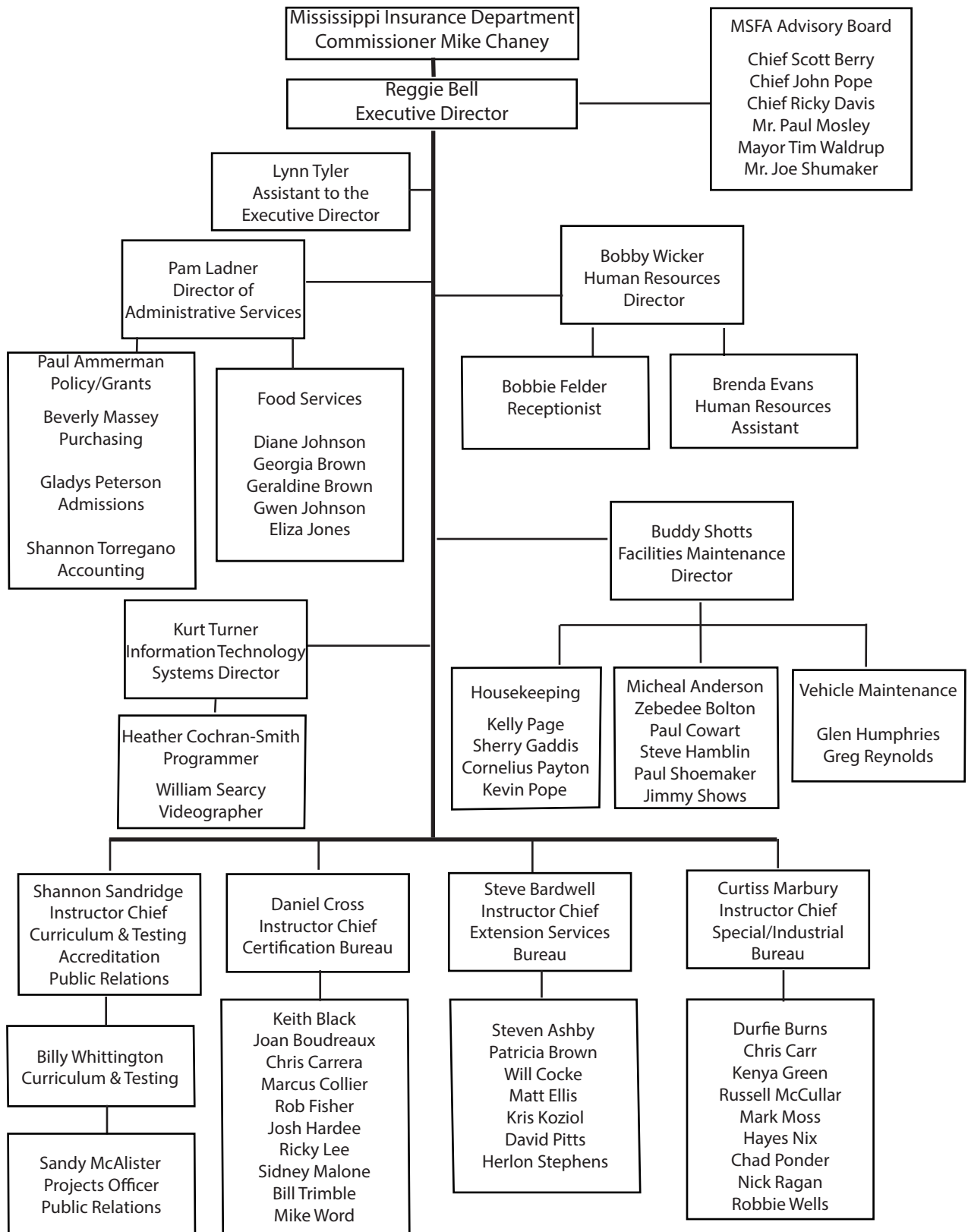
BY PROVIDING QUALITY EDUCATION AND TRAINING IN FUNDAMENTAL AND ADVANCED SKILLS

TO SAVE LIFE AND PROPERTY."

MAKING A DIFFERENCE WHEN IT MATTERS THE MOST!



Organizational Chart





Fund Balance Financial Statement
July 1, 2012 to June 30, 2013

Beginning Fund Balance July 1, 2012:	\$2,462,356.83
Income/Revenue Collections:	
Fire Tax (1/2 of 1% of the gross premium receipts of fire insurance premiums levied)	\$4,121,965.70
Course Fees and Memorabilia Sales	\$ 829,927.22
Sub Grant Funds-Passed through Other State Agencies	\$ 372,480.95
Federal Grant Funds-Direct	\$ 13,337.67
Other Miscellaneous Income	<u>\$ 50,762.50</u>
Total Income/Revenue Collections:	\$5, 388,474.04
Expenses:	
Salaries, Wages, Fringe Benefits	\$3,854,418.86
Travel	\$ 35,691.31
Contractual Services	\$ 529,763.81
Commodities	\$ 557,792.06
Equipment Purchases	\$ 92,157.00
Resale Merchandise	<u>\$ 39,050.37</u>
Total Expenses:	\$5,108,873.41
Ending Fund Balance June 30, 2013:	\$2,741,957.46

MS Code Annotated Section 45-11-5:

Creation of a separate account known as the "State Fire Academy Fund" for the deposit of a tax of one-half of one percent (1/2 of 1%) of the gross premium receipts of fire insurance policies levied in the state.

MS Code Annotated Section 45-11-7 (1):

The State Fire Academy was created for the purpose of training and education of persons engaged in municipal, county and industrial fire protection.

The Academy is officially designated as the agency of this state to conduct training for fire personnel on a statewide basis to all duly constituted fire departments.

The Commissioner of Insurance may establish and charge reasonable fees for the training programs and other services provided by the Academy.



Grant Information Fiscal Year 2013

The Academy was able to receive grant funds directly from the Federal Emergency Management Agency/National Fire Academy. This grant was utilized to pay for deliveries state wide of programs offered by the National Fire Academy.

Grant Funds Received: \$16,324.80
Deliveries Offered: 28
Students Participating: 565

The Mississippi Office of Homeland Security under the MS Department of Public Safety, awarded grant funds from the State Homeland Security Program. This grant was utilized for on campus and field delivery programs that have been approved through the Office of Domestic Preparedness. Courses offerings include Rope Rescue, Confined Space Rescue, Hazardous Materials Awareness/Operations, Hazardous Materials Technician, Trench Rescue, and NIMS courses.

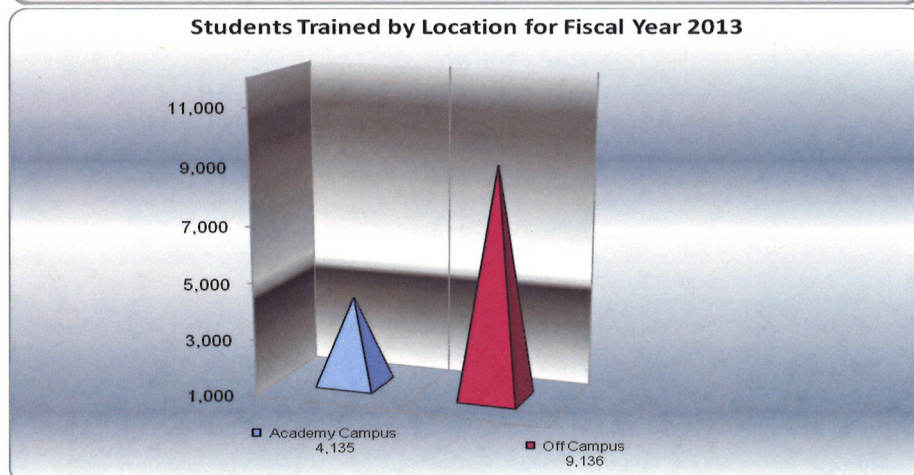
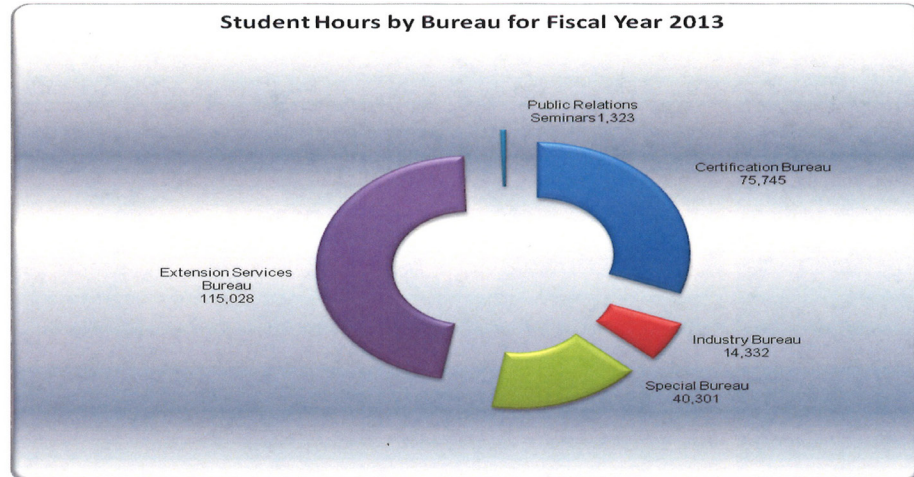
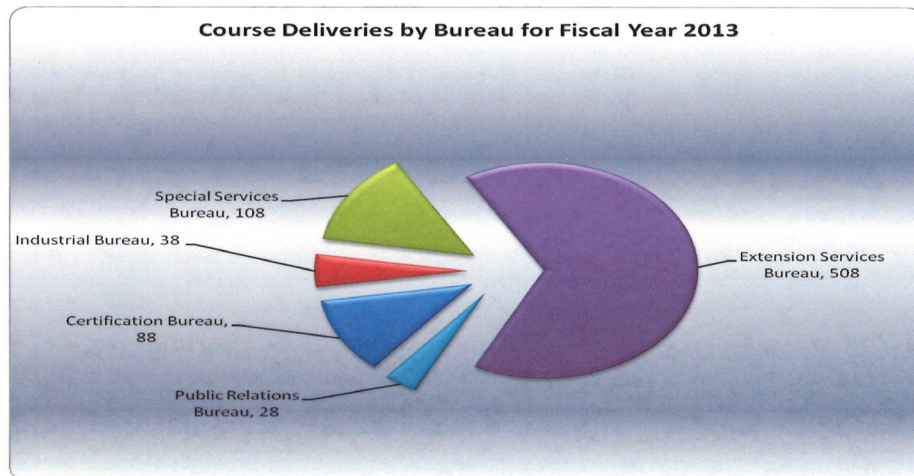
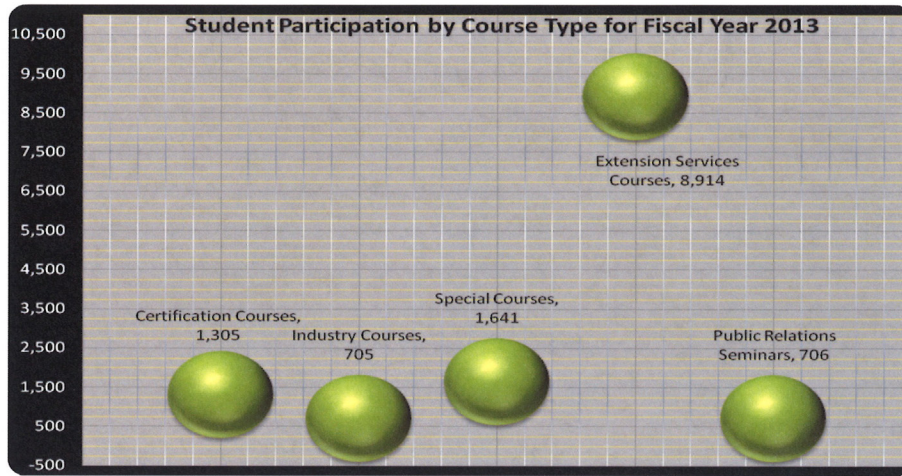
Grant Funds Received: \$177,611.36
Deliveries Offered: 39
Students Participating: 569

The Mississippi Emergency Management Agency awarded grant funds from the Hazardous Materials Emergency Preparedness, under the U S Department of Transportation. This grant was utilized for the delivery of Hazardous Materials Technician I, Hazardous Materials Technician II, Hazardous Materials Awareness/Operations, and Fire Chemistry.

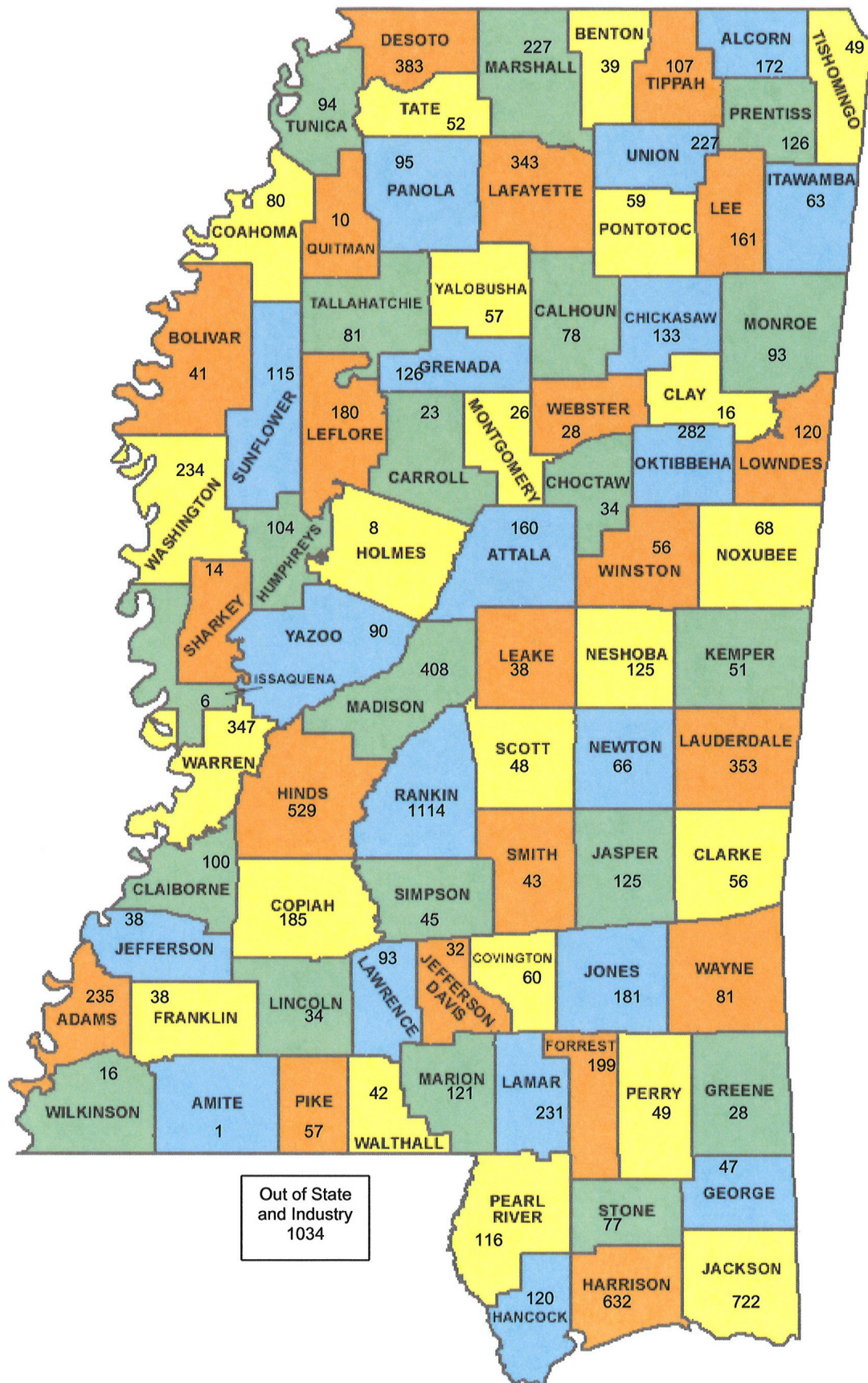
Grant Funds Received: \$138,526.60
Deliveries Offered: 20
Students Participating: 365

The Mississippi Liquefied Compressed Gas (LC Gas) Board of the Mississippi Insurance Department provided PERC grant funds for classes statewide to help emergency responders better understand the hazards of LP gases and prepare for the response to uncontrolled release of LP gas or fire.

Grant Funds Received: \$56,113.00
Deliveries Offered: 18
Students Participating: 695



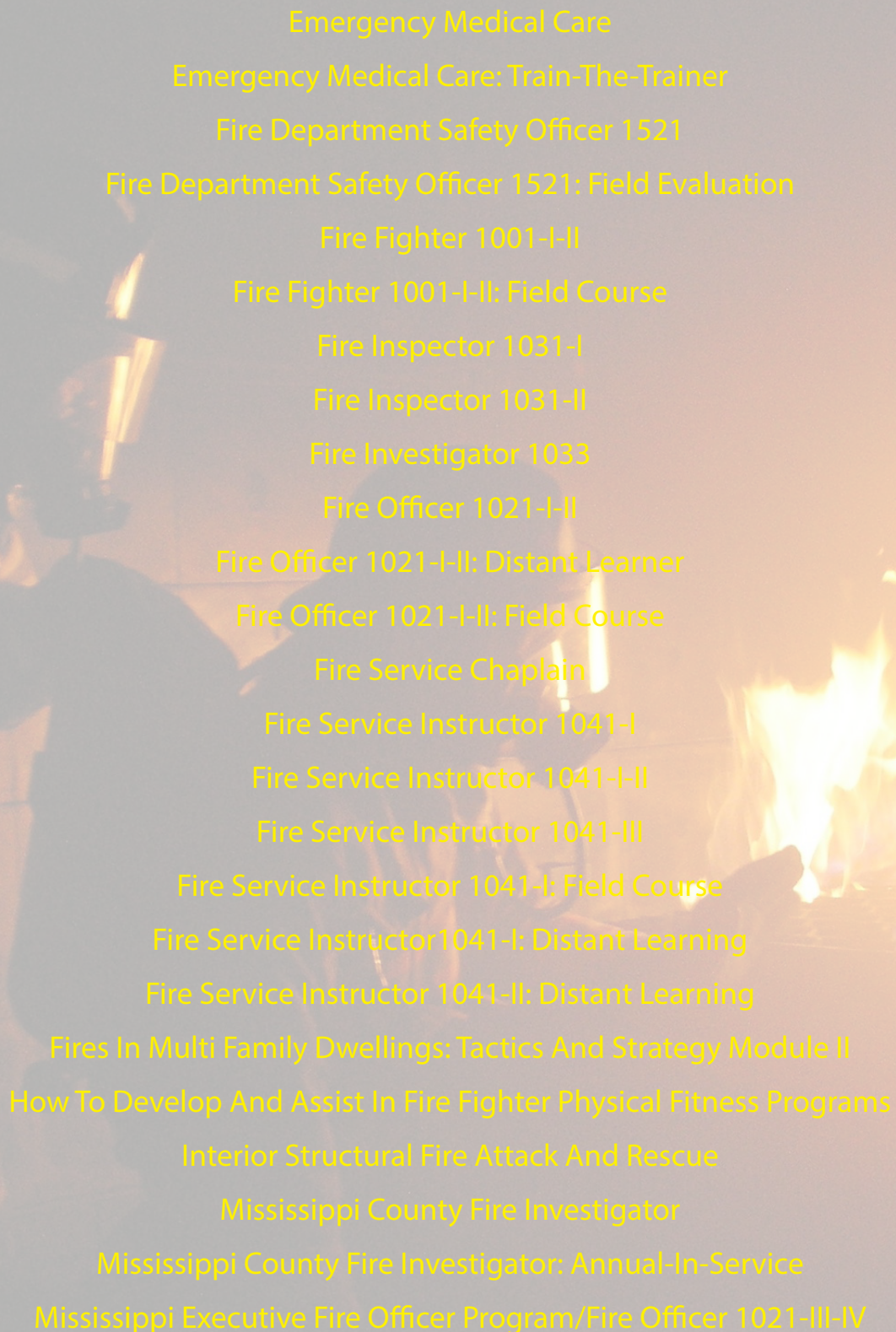
Students Trained by County of Sending Organization Fiscal Year 2013



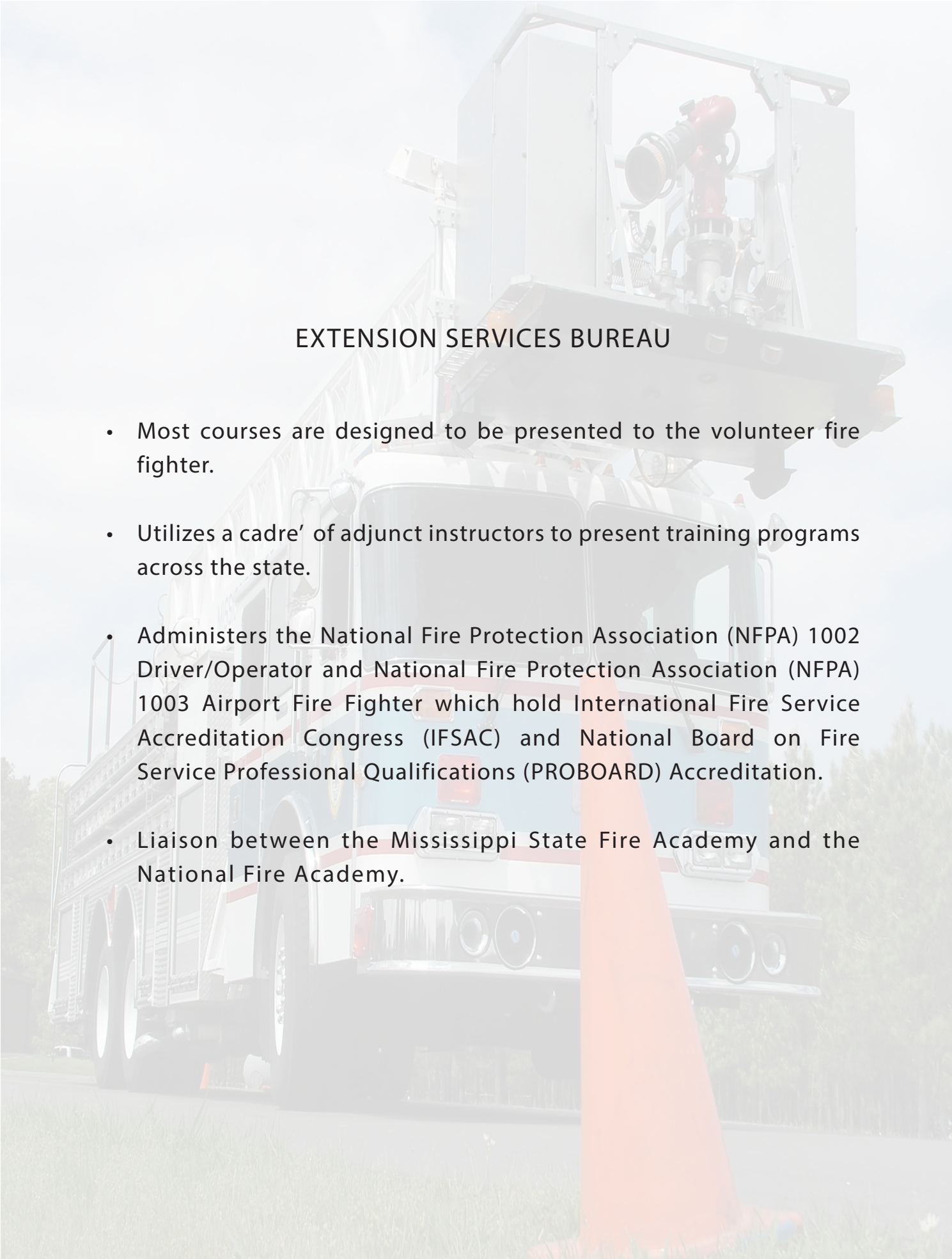
CERTIFICATION SERVICES BUREAU

- Courses are designed to provide career, combination, and volunteer fire departments a wide range of programs that conform to National Fire Protection Association (NFPA) standards.
- Most courses have obtained International Fire Service Accreditation Congress (IFSAC) and National Board on Fire Service Professional Qualifications (PROBOARD) accreditation.
- Course deliveries consist of campus, field, contract programs, and distant learning programs.



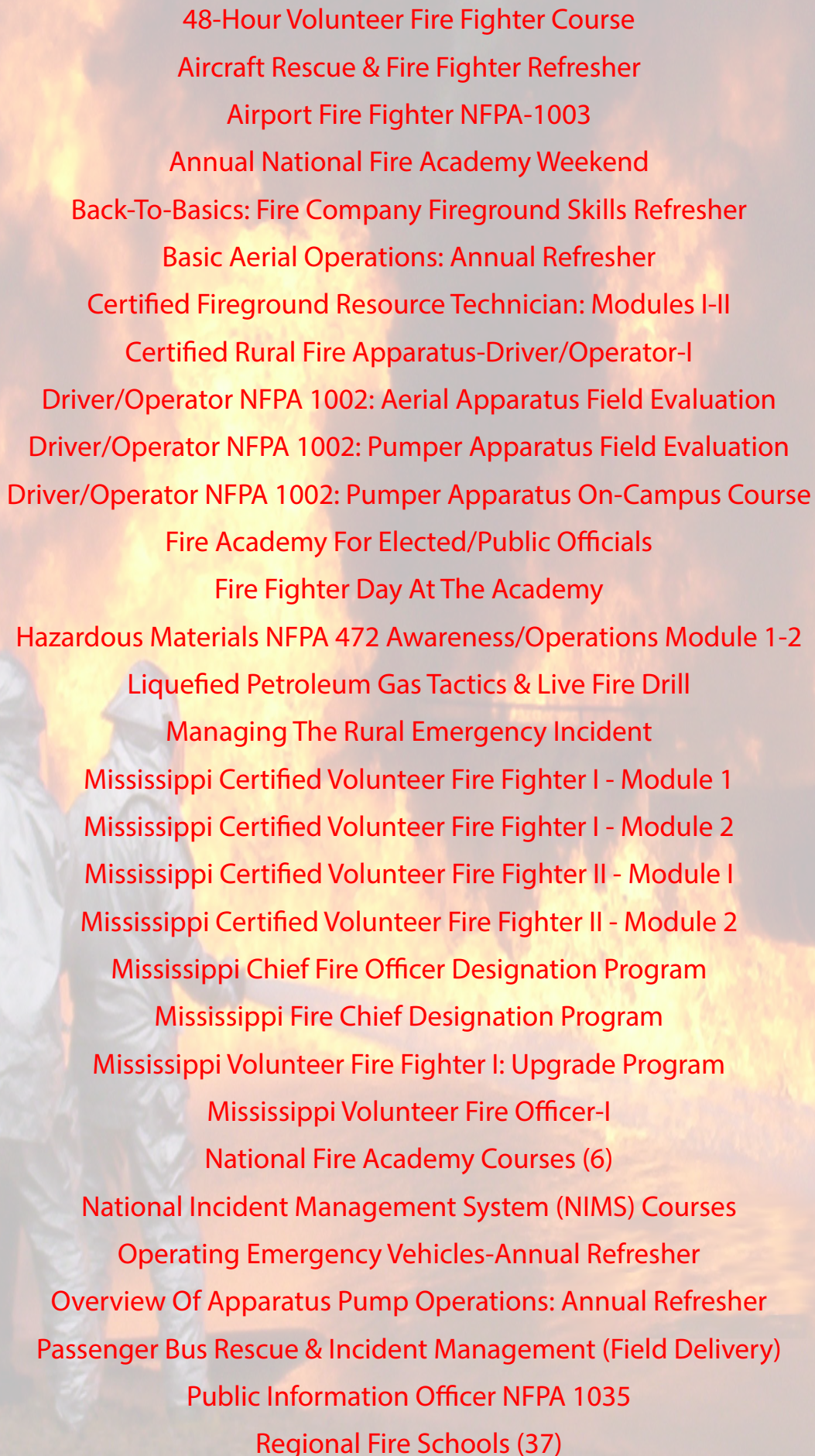


Emergency Medical Care
Emergency Medical Care: Train-The-Trainer
Fire Department Safety Officer 1521
Fire Department Safety Officer 1521: Field Evaluation
Fire Fighter 1001-I-II
Fire Fighter 1001-I-II: Field Course
Fire Inspector 1031-I
Fire Inspector 1031-II
Fire Investigator 1033
Fire Officer 1021-I-II
Fire Officer 1021-I-II: Distant Learner
Fire Officer 1021-I-II: Field Course
Fire Service Chaplain
Fire Service Instructor 1041-I
Fire Service Instructor 1041-I-II
Fire Service Instructor 1041-III
Fire Service Instructor 1041-I: Field Course
Fire Service Instructor 1041-I: Distant Learning
Fire Service Instructor 1041-II: Distant Learning
Fires In Multi Family Dwellings: Tactics And Strategy Module II
How To Develop And Assist In Fire Fighter Physical Fitness Programs
Interior Structural Fire Attack And Rescue
Mississippi County Fire Investigator
Mississippi County Fire Investigator: Annual-In-Service
Mississippi Executive Fire Officer Program/Fire Officer 1021-III-IV



EXTENSION SERVICES BUREAU

- Most courses are designed to be presented to the volunteer fire fighter.
- Utilizes a cadre' of adjunct instructors to present training programs across the state.
- Administers the National Fire Protection Association (NFPA) 1002 Driver/Operator and National Fire Protection Association (NFPA) 1003 Airport Fire Fighter which hold International Fire Service Accreditation Congress (IFSAC) and National Board on Fire Service Professional Qualifications (PROBOARD) Accreditation.
- Liaison between the Mississippi State Fire Academy and the National Fire Academy.



48-Hour Volunteer Fire Fighter Course
Aircraft Rescue & Fire Fighter Refresher
Airport Fire Fighter NFPA-1003
Annual National Fire Academy Weekend
Back-To-Basics: Fire Company Fireground Skills Refresher
Basic Aerial Operations: Annual Refresher
Certified Fireground Resource Technician: Modules I-II
Certified Rural Fire Apparatus-Driver/Operator-I
Driver/Operator NFPA 1002: Aerial Apparatus Field Evaluation
Driver/Operator NFPA 1002: Pumper Apparatus Field Evaluation
Driver/Operator NFPA 1002: Pumper Apparatus On-Campus Course
Fire Academy For Elected/Public Officials
Fire Fighter Day At The Academy
Hazardous Materials NFPA 472 Awareness/Operations Module 1-2
Liquefied Petroleum Gas Tactics & Live Fire Drill
Managing The Rural Emergency Incident
Mississippi Certified Volunteer Fire Fighter I - Module 1
Mississippi Certified Volunteer Fire Fighter I - Module 2
Mississippi Certified Volunteer Fire Fighter II - Module I
Mississippi Certified Volunteer Fire Fighter II - Module 2
Mississippi Chief Fire Officer Designation Program
Mississippi Fire Chief Designation Program
Mississippi Volunteer Fire Fighter I: Upgrade Program
Mississippi Volunteer Fire Officer-I
National Fire Academy Courses (6)
National Incident Management System (NIMS) Courses
Operating Emergency Vehicles-Annual Refresher
Overview Of Apparatus Pump Operations: Annual Refresher
Passenger Bus Rescue & Incident Management (Field Delivery)
Public Information Officer NFPA 1035
Regional Fire Schools (37)



SPECIAL/INDUSTRIAL SERVICES BUREAU

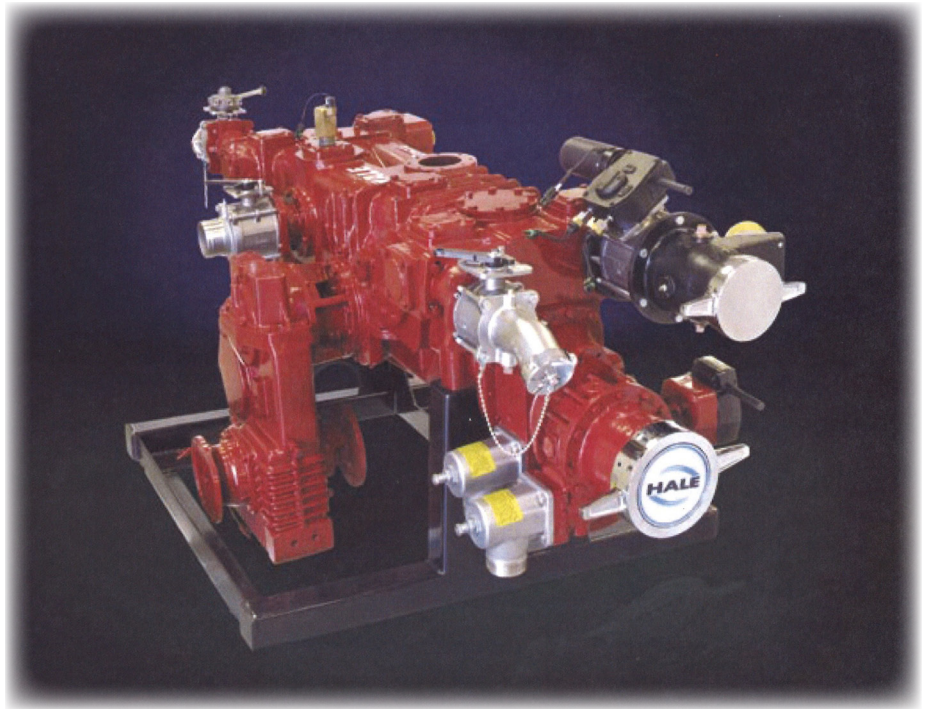
- Programs are generally formatted around the subject of industrial incipient firefighting, technical rescue, and hazardous materials response.
- Most courses have obtained International Fire Service Accreditation Congress (IFSAC) and National Board on Fire Service Professional Qualifications (PROBOARD) accreditation.
- Most special course student fees are supported with federal grant funds.
- Specializes in technical programs geared towards fire department training.
- Program delivery consists of on-campus and off-site programs.



Certified Advanced Rescue Specialist (CARS)
Confined Space Rescue
Confined Space Rescue: Modules 1-4
Emergency Response To Terrorism: Basic Concepts
Fire Service Management-101
Firefighter Intervention Rescue Survival Techniques (FIRST)
Fireground Leadership
Hazardous Materials Awareness And Operations NFPA 472
Hazardous Materials Technician Field Delivery NFPA 472
Hazardous Materials Technician-I NFPA 472
Hazardous Materials Technician-II NFPA 472
Incipient And Structural Fire Brigade Training Programs: Modules I-V
Industrial Fire Fighter Refresher Training
Industrial On-Site Training Programs
NFA Chemistry Of Hazardous Materials: Fire Chem I
Rescue Refresher
Rope Rescue I: Modules 1-4
Rope Rescue Level-I
Rope Rescue Level-II
Smoke Diver
Trench Rescue & Emergency Shoring

OTHER EXTENSION SERVICES

Hale Fire Pump
Rebuilding Class



Fire Apparatus
Testing

CURRICULUM & TESTING/PUBLIC RELATIONS BUREAU

- The Curriculum/Testing Bureau handles all aspects of testing and accreditation for all of our certification programs. We currently have 23 levels of certification accredited by the International Fire Service Accreditation Congress (IFSAC) and 29 levels of certification accredited by the National Board on Fire Service Professional Qualifications (PROBOARD). The majority of our programs are dually accredited. All of our programs are based on National Fire Protection Association Standards.
- Administers the Candidate Physical Ability Test (CPAT) examination for the Mississippi Fire Personnel Minimum Standards and Certification Board (MSCB).
- Our facility is also available for public tours. Scheduled tours can be arranged for most types of educational, civic, and special groups. An age appropriate fire prevention/safety information program is delivered to each group along with a tour of the campus. There is no charge for the tours.





Adjunct Instructor Affiliations Fiscal Year 2013

The Academy contracted with the following individuals for course deliveries during the fiscal year.

Joshua Abercrombie

Matt Bailey

Edwin Blue

Justin Boulter

Kelly Bozarth

Finley Brown

James Bryant

James Bunyard

Barry Burnside

Robert Bush

Lawrence Childs

Anthony Clayton

Pierce Clark

Charles Collins

Jason Cross

Michelle Crowley

Phillip Cummings

Byran Cunningham

Ronald Davis

Andrew Dermitt

Michael Devore

Dustin Eaves

Lyman Fite

Sammy Foy

Michael Gettinger

William Godfrey

Kendall Golden

Todd Graham

John Grimes

Madison Guyton

Ginger Hand

Robert Hinkle

Shedrick Hogan

Kenneth Holbrook

Eddie Ivy

Billy Johnson

Jerry Johnson

Terry Johnson

Tom Lariviere

Derrick Layton

Ricky Leister

Turner Luttrell

Tommy Malone

Jeffrey Mattison

Mark McGavock

Justin Miller

Timothy Miller

Stephen Moore

Craig Nash

Nicholas Hanetho

Joel Nix

Mark Nixon

Robert Parker

Gerald Pickle

Bobby Poe

Danny Prather

Leland Reed

Gary Roberson

Marshall Robinson

John Russell

Michael Rutherford

Kerry Scott

Jason Sheldon

Herman Simpson

Jeffrey Sims

Darryl Smith

James Smith

Raleigh Sprouse

David Stanley

Joseph Stapleton

Adam Stone

Timothy Stuart

Joshua Swales

Charles Brad Thornton

Michael Towne

Lisa Valadie

Karl VanHorn

Tommy Wardlaw

Chris Watkins

Michael Watts

William Wilmoth



Organizational Affiliations

Much of the development and improvement of a successful training program comes as the direct result of dialogue established with other persons in the business. The members of the State Fire Academy staff are affiliated with many related organizations and thus have opportunities to share ideas. Following is a list of organizations staff members are involved in.

- ARFF (Aircraft Rescue and Fire Fighting) Working Group
- International Association of Arson Investigators
- International Association of Fire Chiefs
- International Code Council
- International Fire Service Accreditation Congress (IFSAC)
- Mississippi Administrative Assistants Emergency Services Association
- Mississippi Association of Governmental Purchasing and Property Agents
- Mississippi Association of Personnel Administrators
- Mississippi Association of Public Fire Safety Educators
- Mississippi Chapter of International Association of Arson Investigators
- Mississippi Fire Chiefs Association
- Mississippi Fire Fighters Association
- Mississippi Fire Service Instructors Association
- National Association of Fire Investigators
- National Fire Protection Association
- North American Fire Training Directors Association
- The ProBoard (National Professional Qualifications Board)



2013 PARTICIPATION REPORT BY TYPE OF PROGRAM

Certification Services Bureau

Course Name	Student Count
CHANGING FD CULTURE-SUPPRESSION TO PREVENTION	24
CPAT EXAM	229
EMERGENCY MEDICAL CARE	14
FIRE DEPARTMENT SAFETY OFFICER 1521	12
FIRE FIGHTER 1001-I-II	159
FIRE FIGHTER 1001-I-II FIELD DELIVERY	13
FIRE INSPECTOR 1031-1	39
FIRE INSPECTOR 1031-II	16
FIRE INVESTIGATOR 1033	49
FIRE OFFICER 1021-1 DISTANT LEARNING	4
FIRE OFFICER 1021-1	1
FIRE OFFICER 1021-II DISTANT LEARNING	2
FIRE OFFICER 1021-I-II	40
FIRE OFFICER 1021-I-II FIELD DELIVERY	48
FIRE OFFICER 1021-I-II STATE CERTIFICATE	1
FIRE SCENE INTERVIEWING/COURTROOM EXAMINATION	39
FIRE SERVICE CHAPLAIN	31
FIRE SERVICE INSTRUCTOR 1041-I	70
FIRE SERVICE INSTRUCTOR 1041-I FIELD DELIVERY	62
FIRE SERVICE INSTRUCTOR 1041-I DISTANT LEARNING	13
FIRE SERVICE INSTRUCTOR 1041-II	34
FIRE SERVICE INSTRUCTOR 1041-II DISTANT LEARNING	3
FIRE SERVICE INSTRUCTOR 1041-III	23
FIRES IN SINGLE FAMILY DWELLINGS: TACTICS & STRATEGY	17
HAZ MAT NFPA 472 OPERATIONS W/PPE & PRODUCT CONTROL FIELD DEL.	17
HAZ MAT NFPA 472 OPERATIONS W/PPE & PRODUCT CONTROL	152
INTERIOR STRUCTURAL FIRE ATTACK AND RESCUE	11
IS 100: INTRODUCTION TO ICS	74
IS 200: ICS FOR SINGLE RESOURCE AND INITIAL ACTIONS	53
MISSISSIPPI COUNTY FIRE INVESTIGATOR	20
MISSISSIPPI COUNTY FIRE INVESTIGATOR: ANNUAL IN-SERVICE	37
MISSISSIPPI EXECUTIVE FIRE OFFICER 1021-III-IV MODULE 4	24
PREPARING A COMPANY OFFICER TO BE A CHIEF OFFICER	13
TECHNICAL ROPE RESCUE	11



2013 PARTICIPATION REPORT BY TYPE OF PROGRAM

Extension Services Bureau

Course Name	Student Count
10 COMMANDMENTS OF EFFECTIVE & SAFE FIREGROUND MANAGEMENT	67
48 HOUR VOLUNTEER FIRE FIGHTER	15
48 HOUR VOLUNTEER FIRE FIGHTER-MODULE 1	24
A PRACTICAL APPROACH TO EMPLOYMENT LAW ISSUES	40
ADJUNCT INSTRUCTOR DEVELOPMENT-I	3
AIRCRAFT RESCUE FIRE FIGHTER REFRESHER TRAINING (3-HOUR)	252
AIRCRAFT RESCUE FIRE FIGHTER REFRESHER TRAINING (6-HOUR)	84
AIRCRAFT RESCUE FIRE FIGHTER REFRESHER TRAINING (8-HOUR)	26
AIRPORT FIRE FIGHTER	47
AND THE BEAT GOES ON	6
APPARATUS OPERATIONS	34
APPARATUS PUMP OPERATION-MODULE 2: MWS	144
APPARATUS PUMP OPERATION-MODULE 1: BASICS	227
ASSOCIATE INSTRUCTOR DEVELOPMENT-LEVEL I	8
AUTISM AWARENESS FOR EMS	53
AUTOMOBILE EXTRICATION	421
BASIC AERIAL OPERATIONS: ANNUAL REFRESHER	28
BASIC FIRE COMPANY FIREGROUND SKILLS REFRESHER	20
BASIC RESCUE OPERATIONS	99
CALLING THE MAYDAY I	377
CALLING THE MAYDAY II	365
CERTIFIED FIREGROUND RESOURCE TECHNICIAN	7
CERTIFIED FIREGROUND RESOURCE TECHNICIAN-MODULE 1	13
CERTIFIED RURAL FIRE APPARATUS-DRIVER/OPERATOR-I	49
CUSTOMER SERVICE	107
DE-ESCALATION OF CONFLICT & VERBAL JUDO	40
DEVELOPING & SUSTAINING A WATER SUPPLY	37
DISASTER DOCUMENTATION	40
DOMESTIC VIOLENCE IN THE WORKPLACE	40
DRIVER OPERATOR	8
DRIVER/OPERATOR - PUMPER: TRAIN-THE-TRAINER	2
DRIVER/OPERATOR NFPA 1002: AERIAL APPARATUS	18
DRIVER/OPERATOR NFPA 1002: PUMPER APPARATUS	80
DRIVER/OPERATOR NFPA 1002: PUMPER APPARATUS FIELD DELIVERY	77
ELECTRIC VEHICLE SAFETY-TRAIN THE TRAINER	34
ELECTRICAL HAZARDS ON THE EMERGENCY SCENE	84
EMS OPERATIONS 12-HOUR	163
EMS OPERATIONS 8-HOUR	94
ENGINE COMPANY OPERATIONS - PART 1	60
ENGINE COMPANY OPERATIONS - PART 2	34
EVERYDAY FIRE	189
EXECUTIVE SKILL SERIES: MANAGING & LEADING CHANGE	4
FIRE ACADEMY FOR ELECTED/PUBLIC OFFICIALS	16



2013 PARTICIPATION REPORT BY TYPE OF PROGRAM

Extension Services Bureau (Cont.)

Course Name	Student Count
FIRE AND LIFE SAFETY EDUCATOR-I	6
FIRE APPARATUS TESTING	7
FIRE ATTACK WITH FOAM	121
FIRE FIGHTER DAY AT THE ACADEMY	36
FIRE FIGHTER ESSENTIAL SKILLS - I	76
FIRE FIGHTER ESSENTIAL SKILLS - II	14
FIRE FIGHTER ESSENTIAL SKILLS - III	100
FIRE FIGHTER SELF RESCUE	54
FIRE SERVICE ETHICS	32
FIRE SERVICE RESCUE 101	118
FIREGROUND SUPPORT OPERATIONS	64
FOAM RESPONSE	6
FORCIBLE ENTRY	19
HALE PUMP	9
HAZ MAT NFPA 472 OPERATIONS W/PPE & PRODUCT CONTROL	67
HAZARDOUS MATERIALS AWARENESS/OPERATIONS-MODULE 1	93
HAZARDOUS MATERIALS NFPA 472 AWARENESS/OPERATIONS	13
HAZARDOUS MATERIALS: INITIAL RESPONSE	271
HEALTH & SAFETY OFFICER	25
HOW THE STATE RECEIVES FEDERAL DISASTER DECLARATION	40
ICS FOR STRUCTURAL COLLAPSE INCIDENTS: TRAIN-THE-TRAINER	15
INCIDENT COMMAND	3
INCIDENT SAFETY OFFICER	96
INTRO TO STRUCTURAL FIRE ATTACK & RESCUE FOR 911 PERSONNEL	11
IS 100: INTRODUCTION TO ICS	45
LIFE SAFETY INITIATIVES	31
LP-GAS TACTICS & LIVE FIRE DRILL	523
MANAGING THE RURAL EMERGENCY INCIDENT 3 HOUR	29
MANAGING THE RURAL EMERGENCY INCIDENT 6 HOUR	36
MANAGING THE RURAL EMERGENCY INCIDENT/PERSONAL ACCOUNTABILITY	43
MISSISSIPPI CERTIFIED VOL. FIRE FIGHTER [NFPA 1001-BASED]	12
MISSISSIPPI CERTIFIED VOLUNTEER FIRE FIGHTER I	278
MISSISSIPPI CERTIFIED VOLUNTEER FIRE FIGHTER II	109
MISSISSIPPI CERTIFIED VOLUNTEER FIRE FIGHTER II MODULE I	110
MISSISSIPPI FIRE FIGHTER SAFETY 2004	46
MISSISSIPPI FIRE FIGHTER SAFETY 2006	22
MISSISSIPPI FIRE FIGHTER SAFETY 2012	15
MISSISSIPPI VOLUNTEER FIRE FIGHTER 1: UP-GRADE	92
MISSISSIPPI VOLUNTEER FIRE FIGHTER 1-MODULE 1 CLASSROOM	389
MISSISSIPPI VOLUNTEER FIRE FIGHTER 1-MODULE 1: ORAL TEST	4
MISSISSIPPI VOLUNTEER FIRE OFFICER-I	15
MS CHIEF OFFICERS DESIGNATION	2
MS FIRE CHIEF DESIGNATION PROGRAM	5



2013 PARTICIPATION REPORT BY TYPE OF PROGRAM

Extension Services Bureau (Cont.)

Course Name	Student Count
MS FIRE PREVENTION AND PUBLIC FIRE SAFETY EDUCATION	41
MS TRAINING CHIEFS CONFERENCE 2012	75
NATURAL GAS RESPONSE CONSIDERATIONS FOR FIRE DEPT.	70
NIMS ICS 300 (INTERMEDIATE ICS)	113
NIMS ICS 400 (ADVANCED ICS)	135
NIMS ICS-800: NATIONAL RESPONSE PLAN-INTRODUCTION	1
NIMS COMMAND SYSTEM 300 & 400: FACILITATOR	8
NIMS COMMAND SYSTEM 300: TRAIN-THE-TRAINER	4
NIMS COMMAND SYSTEM 400: TRAIN-THE-TRAINER	4
NIMS INCIDENT COMMAND SYSTEM FOR THE FIRE SERVICE	21
OPERATING EMERGENCY VEHICLES	25
PASSENGER BUS RESCUE & INCIDENT MANAGEMENT	23
PERSONNEL ACCOUNTABILITY: TWO-IN/TWO-OUT RULE	72
PERSONNEL: SOCIAL NETWORKING & THE PUBLIC EMPLOYEE	40
POLITICS AND THE WHITE HELMET	43
PREVENTION & MITIGATION ADVOCACY FOR SMALL DEPARTMENTS	14
PURCHASING LAWS: THE GOOD, THE BAD, & THE UGLY	40
RAPID INTERVENTION TEAMS	85
RESPONDING TO FIRE/RESCUE INCIDENTS: 911 PERSONNEL	9
RESPONSE TO NEW VEHICLE FIRES	223
RURAL FIREFIGHTING: THE WATER SUPPLY CHALLENGE	51
SPILL AND LEAK CONTROL	3
STRATEGY & TACTICS FOR INITIAL COMPANY OPERATIONS	41
STRUCTURAL FIRE ATTACK	69
THE 911 DISPATCHER AS THE INCIDENT COMMANDER	79
THE FIRE APPARATUS DRIVER	208
THREE LIFE LESSONS LEARNED	40
TIME MANAGEMENT	40
TRAINING, RESPONDING AND RETURNING HOME ALIVE	19
UNDERSTANDING THE ROLE OF THE INCIDENT SAFETY OFFICER	84
VOLUNTEER FIRE FIGHTER I - MODULE 1 - 2ND ATTEMPT	30
VOLUNTEER FIRE FIGHTER INSTRUCTOR ORIENTATION	43
WHAT ARE FIRE FIGHTERS DOING INSIDE A BURNING BUILDING	73
WILDLAND/URBAN INTERFACE FIRE FIGHTING: STRUCTURAL CO. OFFICER	28



2013 PARTICIPATION REPORT BY TYPE OF PROGRAM

Industrial Services Bureau

Course Name	Student Count
BASIC RESCUE	12
CHLORINE RESPONSE TRAINING	141
CONFINED SPACE RESCUE REFRESHER	9
HAZ MAT AWARENESS TRAINING	24
HAZ MAT OPERATIONAL TRAINING	24
HAZ MAT TECHNICIAN LEVEL TRAINING	24
INCIDENT COMMAND SYSTEM	53
INDUSTRIAL FIRE BRIGADE TRAINING	15
INDUSTRIAL REFRESHER FIRE FIGHTER TRAINING (16-HOUR)	13
INDUSTRIAL REFRESHER FIRE FIGHTER TRAINING (24-HOUR)	122
INDUSTRIAL REFRESHER FIRE FIGHTER TRAINING (40-HOUR)	19
INDUSTRIAL REFRESHER FIRE FIGHTER TRAINING (8-HOUR)	219
INDUSTRIAL RESCUE REFRESHER	25
REFRESHER HAZ MAT TRAINING	13
RESCUE REFRESHER (16-HOUR)	12
RESCUE REFRESHER (8-HOUR)	12
ROPE RESCUE I	12



2013 PARTICIPATION REPORT BY TYPE OF PROGRAM

Special Services Bureau

Course Name	Student Count
CERTIFIED ADVANCED RESCUE TECHNICIAN	21
CHEMISTRY OF HAZARDOUS MATERIALS: FIRE CHEM I	17
CHLORINE/COMMUNICATIONS WITH THE MEDIA	33
CONFINED SPACE RESCUE MODULE 1	83
CONFINED SPACE RESCUE MODULE 2	82
CONFINED SPACE RESCUE MODULE 3	81
CONFINED SPACE RESCUE MODULE 4	81
CONFINED SPACE RESCUE TECHNICIAN	67
DECONTAMINATION/CHEMICAL PROTECTIVE CLOTHING	33
EMERGENCY RESPONSE TO TERRORISM: BASIC CONCEPTS	16
FIRE SERVICE MANAGEMENT 101	22
FIREFIGHTER INTERVENTION RESCUE SURVIVAL TECHNIQUES	65
FIREGROUND LEADERSHIP	36
HAZARDOUS MATERIALS FOR FIRST RESPONDERS	20
HAZARDOUS MATERIALS TECHNICIAN (FIELD DELIVERY)	30
HAZARDOUS MATERIALS TECHNICIAN - I	90
HAZARDOUS MATERIALS TECHNICIAN-II	33
NON-BULK CONTAINERS/HIGHWAY CARRIERS/RAIL CARS	32
RESCUE REFRESHER	13
RESPONDING TO HAZARDOUS MATERIALS INCIDENTS	30
ROPE RESCUE I - MODULE 1	106
ROPE RESCUE I - MODULE 2	104
ROPE RESCUE I - MODULE 3	103
ROPE RESCUE I - MODULE 4	88
ROPE RESCUE II	92
ROPE RESCUE TECHNICIAN - I	93
SMOKE DIVER	48
SOURCES OF ASSISTANCE/HAZ MAT ICS/CHEM. TERMS & DEFINITIONS	33
TOXICOLOGY/MONITORING DEVICES/WEAPONS OF MASS DESTRUCTION	33
TRENCH RESCUE AND EMERGENCY SHORING TECHNICIAN	54



2013 PARTICIPATION REPORT BY ORGANIZATION

Organization Name	Student Count
ABEL'S STORE VOLUNTEER FIRE DEPARTMENT	3
ACKERMAN FIRE DEPARTMENT	4
ADAMS COUNTY EMERGENCY MANAGEMENT	11
ADAMS COUNTY FIRE COORDINATOR	1
ADAMS COUNTY SHERIFF'S DEPARTMENT	7
ADATON/SELF CREEK FIRE DEPARTMENT	17
AGRICOLA VOLUNTEER FIRE DEPARTMENT	4
AKZO NOBEL	36
ALABAMA STATE FIRE COLLEGE	1
ALCORN COUNTY FIRE SERVICES	1
ALCORN STATE UNIVERSITY	3
ALGOMA VOLUNTEER FIRE DEPARTMENT	6
ALLEN VOLUNTEER FIRE DEPARTMENT	24
ALPHABA/COCKRUM/INGRAMS FIRE DEPARTMENT	1
ALTITUDE VOLUNTEER FIRE DEPARTMENT	5
AMORY FIRE DEPARTMENT	16
AMORY POLICE DEPARTMENT	1
AMR - HINDS COUNTY	2
ANGUILLA VOLUNTEER FIRE DEPARTMENT	1
ARCOLA VOLUNTEER FIRE DEPARTMENT	18
ARKEMA	3
ARLINGTON VOLUNTEER FIRE DEPARTMENT/NESHOPA COUNTY	1
ARM VOLUNTEER FIRE DEPARTMENT	1
ASHLAND VOLUNTEER FIRE DEPARTMENT	13
ATLANTA FIRE DEPARTMENT	1
ATTALA COUNTY CENTRAL FIRE DEPARTMENT	54
ATTALA COUNTY CIVIL DEFENSE	1
AXIAL	21
BAILEY VOLUNTEER FIRE DEPARTMENT	2
BALDWIN VOLUNTEER FIRE DEPARTMENT	7
BANNER VOLUNTEER FIRE DEPARTMENT/CALHOUN COUNTY	8
BANNER/BOUNDS VOLUNTEER FIRE DEPARTMENT/ITAWAMBA CTY.	2
BAPTIST MEMORIAL - UNION COUNTY	1
BARLOW VOLUNTEER FIRE DEPARTMENT	4
BARTON VOLUNTEER FIRE DEPARTMENT/GEORGE COUNTY	7
BARTON VOLUNTEER FIRE DEPARTMENT/MARSHALL COUNTY	27
BASIN VOLUNTEER FIRE DEPARTMENT	5
BASSFIELD VOLUNTEER FIRE DEPARTMENT	4
BATESVILLE FIRE DEPARTMENT	33
BATESVILLE POLICE DEPARTMENT	1
BAY SPRINGS VOLUNTEER FIRE DEPARTMENT	15
BAY ST. LOUIS FIRE DEPARTMENT	14
BAYSIDE PARK VOLUNTEER FIRE DEPARTMENT	9



2013 PARTICIPATION REPORT BY ORGANIZATION (Cont.)

Organization Name	Student Count
BEAVER LAKE VOLUNTEER FIRE DEPARTMENT	11
BEAVER MEADOWS VOLUNTEER FIRE DEPARTMENT	8
BEAVERDAM VOLUNTEER FIRE DEPARTMENT	5
BECKER-ATHENS VOLUNTEER FIRE DEPARTMENT	6
BECKHAM VOLUNTEER FIRE DEPARTMENT	1
BELDEN VOLUNTEER FIRE DEPARTMENT	1
BELL SCHOOL HOUSE FIRE DEPARTMENT	1
BELZONI FIRE DEPARTMENT	90
BENCH VOLUNTEER FIRE DEPARTMENT	1
BENNDALE VOLUNTEER FIRE DEPARTMENT	1
BENTON FIRE DEPARTMENT	2
BENTON VOLUNTEER FIRE DEPARTMENT	25
BENTONIA VOLUNTEER FIRE DEPARTMENT	12
BETHEL VOLUNTEER FIRE DEPARTMENT	8
BEULAH HUBBARD VOLUNTEER FIRE DEPARTMENT/NEWTON CO.	11
BEXLEY VOLUNTEER FIRE DEPARTMENT	1
BIG LEVEL VOLUNTEER FIRE DEPARTMENT	3
BILOXI FIRE DEPARTMENT	30
BILOXI POLICE DEPARTMENT	4
BIRMINGHAM RIDGE FIRE PROTECTION DISTRICT	9
BLACKHAWK VOLUNTEER FIRE DEPARTMENT	2
BLACKLAND VOLUNTEER FIRE DEPARTMENT	25
BLUE MOUNTAIN VOLUNTEER FIRE DEPARTMENT	4
BLYTHEVILLE FIRE DEPARTMENT	16
BOLIVAR COUNTY FIRE DEPARTMENT	28
BOLIVAR COUNTY SHERIFF'S DEPARTMENT	1
BOLTON VOLUNTEER FIRE DEPARTMENT	15
BOONEVILLE FIRE DEPARTMENT	23
BOONEVILLE POLICE DEPARTMENT	5
BOVINA VOLUNTEER FIRE DEPARTMENT	4
BRANDON FIRE DEPARTMENT	56
BRANDON POLICE DEPARTMENT	21
BRAXTON VOLUNTEER FIRE DEPARTMENT	3
BRIDGETOWN VOLUNTEER FIRE DEPARTMENT	1
BROOKHAVEN FIRE DEPARTMENT	26
BROOKLYN VOLUNTEER FIRE DEPARTMENT	15
BROOKSVILLE VOLUNTEER FIRE DEPARTMENT	24
BROWNSVILLE VOLUNTEER FIRE DEPARTMENT	13
BRUCE VOLUNTEER FIRE DEPARTMENT	19
BUDE VOLUNTEER FIRE DEPARTMENT	10
BUFFALO VOLUNTEER FIRE DEPARTMENT	4
BUNKOM HILL/NEW HOPE VOLUNTEER FIRE DEPARTMENT	3
BURNSVILLE VOLUNTEER FIRE DEPARTMENT	9



2013 PARTICIPATION REPORT BY ORGANIZATION (Cont.)

Organization Name	Student Count
BURTON VOLUNTEER FIRE DEPARTMENT	11
BYHALIA VOLUNTEER FIRE DEPARTMENT	14
BYNUM VOLUNTEER FIRE DEPARTMENT	17
BYRAM FIRE DEPARTMENT	15
BYRAM POLICE DEPARTMENT	7
BYRAM VOLUNTEER FIRE DEPARTMENT	36
BYWY VOLUNTEER FIRE DEPARTMENT/CHOCTAW COUNTY	15
CAIRO VOLUNTEER FIRE DEPARTMENT	1
CALHOUN CITY VOLUNTEER FIRE DEPARTMENT	13
CALHOUN COUNTY FIRE COORDINATOR	4
CALHOUN VOLUNTEER FIRE DEPARTMENT	8
CAMDEN FIRE & RESCUE	3
CANADIAN NATIONAL RAILWAY	1
CANNONSBURG/CHURCH HILL VOLUNTEER FIRE DEPARTMENT	13
CANTON CITY OF	1
CANTON FIRE DEPARTMENT	127
CARNES VOLUNTEER FIRE DEPARTMENT	14
CARRIERE VOLUNTEER FIRE DEPARTMENT	29
CARROLL COUNTY BEAT 4 VOLUNTEER FIRE DEPARTMENT	1
CARTER'S BRANCH FIRE DEPARTMENT	2
CARTHAGE FIRE DEPARTMENT	14
CASCILLA VOLUNTEER FIRE DEPARTMENT	5
CATO VOLUNTEER FIRE DEPARTMENT	6
CAUSEYVILLE VOLUNTEER FIRE DEPARTMENT	9
CAYCE VOLUNTEER FIRE DEPARTMENT	20
CEDAR CREEK VOLUNTEER FIRE DEPARTMENT	13
CENTER RIDGE VOLUNTEER FIRE DEPARTMENT	6
CENTRAL GEORGE COUNTY VOLUNTEER FIRE DEPARTMENT	5
CENTRAL JASPER COUNTY VOLUNTEER FIRE DEPARTMENT	12
CENTRAL LAMAR COUNTY FIRE DEPARTMENT	6
CENTRAL OKTIBBEHA /LONGVIEW FIRE DEPARTMENT	21
CHARLESTON VOLUNTEER FIRE DEPARTMENT	17
CHICKASAW COUNTY FIRE COORDINATOR	2
CHICKASAW COUNTY SHERIFF'S DEPARTMENT	1
CHICKEN BONE FIRE DEPARTMENT	16
CHLORINE INSTITUTE	133
CHOCTAW COUNTY FIRE COORDINATOR	2
CHOCTAW COUNTY SHERIFF'S DEPARTMENT	2
CHOCTAW FIRE DEPARTMENT	44
CHUNKY VOLUNTEER FIRE DEPARTMENT	3
CLAIBORNE COUNTY FIRE DEPARTMENT	29
CLAIBORNE COUNTY SHERIFF'S DEPARTMENT	2
CLARKDALE VOLUNTEER FIRE DEPARTMENT	1



2013 PARTICIPATION REPORT BY ORGANIZATION (Cont.)

Organization Name	Student Count
CLARKE COUNTY E-911	1
CLARKE COUNTY FIRE SERVICE	5
CLARKE COUNTY SHERIFF'S DEPARTMENT	1
CLARKSDALE FIRE DEPARTMENT	11
CLAY COUNTY FIRE COORDINATOR	1
CLAY COUNTY SHERIFF'S DEPARTMENT	2
CLEAR SPRINGS VOLUNTEER FIRE DEPARTMENT	1
CLEARY VOLUNTEER FIRE DEPARTMENT	15
CLEVELAND FIRE DEPARTMENT	10
CLEVELAND UNIT FIRE DEPARTMENT/BOLIVAR CTY DI	2
CLINTON FIRE DEPARTMENT	29
COAHOMA COUNTY FIRE DEPARTMENT	64
COAHOMA COUNTY SHERIFF'S DEPARTMENT	5
COBB CO FIRE & EMERGENCY SERVICE	1
COFFEEVILLE VOLUNTEER FIRE DEPARTMENT	3
COLDWATER VOLUNTEER FIRE DEPARTMENT	4
COLES POINT VOLUNTEER FIRE DEPARTMENT	1
COLLINS FIRE DEPARTMENT	41
COLLINSVILLE VOLUNTEER FIRE DEPARTMENT	2
COLUMBIA FIRE DEPARTMENT	17
COLUMBUS FIRE DEPARTMENT	71
COMO VOLUNTEER FIRE DEPARTMENT	3
CONCORDIA FIRE DISTRICT #2	2
CONEHATTA VOLUNTEER FIRE DEPARTMENT	2
COPIAH COUNTY EMERGENCY MANAGEMENT	4
COPIAH COUNTY FIRE COORDINATOR	1
COPIAH COUNTY SHERIFF'S DEPARTMENT	3
CORINTH FIRE DEPARTMENT	156
COUNTY LINE VOLUNTEER FIRE DEPARTMENT	18
COURTLAND VOLUNTEER FIRE DEPARTMENT	4
COVINGTON COUNTY FIRE COORDINATOR	3
COVINGTON COUNTY SHERIFF'S DEPARTMENT	1
CROSSROADS VOLUNTEER FIRE DEPARTMENT/HINDS COUNTY	4
CRYSTAL SPRINGS FIRE COMPANY INC	11
CUEVAS VOLUNTEER FIRE DEPARTMENT	2
CULKIN VOLUNTEER FIRE DEPARTMENT	41
CUMBERLAND VOLUNTEER FIRE DEPARTMENT	1
CURTIS-LOCKE VOLUNTEER FIRE DEPARTMENT	4
DAMASCUS FIRE DEPARTMENT	5
DEKALB VOLUNTEER FIRE DEPARTMENT	3
DENNIS VOLUNTEER FIRE DEPARTMENT	1
DEPARTMENT OF INSURANCE	3
DERMA VOLUNTEER FIRE DEPARTMENT	4



2013 PARTICIPATION REPORT BY ORGANIZATION (Cont.)

Organization Name	Student Count
DESOTO COUNTY EMERGENCY SERVICES	8
DESOTO COUNTY SHERIFF'S DEPARTMENT	1
DESOTO VOLUNTEER FIRE DEPARTMENT/CLARKE COUNTY	7
DIAMONDHEAD FIRE DEPARTMENT	22
D'IBERVILLE FIRE DEPARTMENT	5
DISTRICT 3 VOLUNTEER FIRE DEPARTMENT LOWNDES COUNTY	27
DIXIE VOLUNTEER FIRE DEPARTMENT	11
DIXON VOLUNTEER FIRE DEPARTMENT	2
DOTHAN REGIONAL AIRPORT FIRE DEPARTMENT	6
DREW VOLUNTEER FIRE DEPARTMENT	7
DRY CREEK VOLUNTEER FIRE DEPARTMENT	1
DUCK HILL VOLUNTEER FIRE DEPARTMENT	4
DUFFEE VOLUNTEER FIRE DEPARTMENT	4
DUMAS VOLUNTEER FIRE DEPARTMENT	6
DUPONT SPECIALTY CHEMICALS	65
DURANT VOLUNTEER FIRE DEPARTMENT	4
E. CENTRAL VOLUNTEER FIRE DEPARTMENT	27
E. CENTRAL/E. FORK FIRE DEPARTMENT	1
E. FRANKLIN RURAL FIRE DEPARTMENT	3
E. OKTIBBEHA COUNTY FIRE DEPARTMENT	39
E. UNION VOLUNTEER FIRE DEPARTMENT	14
E. WINSTON COUNTY VOLUNTEER FIRE DEPARTMENT	1
EAGLE LAKE VOLUNTEER FIRE DEPARTMENT	4
EASTPORT/MILLCREEK FIRE DEPARTMENT	1
ECRU VOLUNTEER FIRE DEPARTMENT	11
EDINBURG VOLUNTEER FIRE DEPARTMENT	1
ELLIOTT VOLUNTEER FIRE DEPARTMENT	7
ELLISVILLE FIRE DEPARTMENT	20
ENGLAND AIRPARK FIRE DEPARTMENT	24
ENON VOLUNTEER FIRE DEPARTMENT	10
ENTERPRISE VOLUNTEER FIRE DEPARTMENT	6
ERGON REFINING, INC.	95
ESCATAWPA VOLUNTEER FIRE DEPARTMENT	34
ESCATAWPA UTILITY DISTRICT FIRE DEPARTMENT	2
EUDORA VOLUNTEER FIRE DEPARTMENT	15
EUPORA VOLUNTEER FIRE DEPARTMENT	2
EVERGREEN FIRE PROTECTION DIST	12
EVERGREEN-CAROLINA VOLUNTEER FIRE DEPARTMENT	10
EXXON-BATON ROUGE REFINERY	46
FAIRHAVEN VOLUNTEER FIRE DEPARTMENT	17
FAIRVIEW VOLUNTEER FIRE DEPARTMENT	2
FALKNER VOLUNTEER FIRE DEPARTMENT	3
FARMHAVEN VOLUNTEER FIRE DEPARTMENT	10



2013 PARTICIPATION REPORT BY ORGANIZATION (Cont.)

Organization Name	Student Count
FARMINGTON VOLUNTEER FIRE DEPARTMENT	9
FAYETTE VOLUNTEER FIRE DEPARTMENT	1
FELLOWSHIP VOLUNTEER FIRE DEPARTMENT	3
FENTON VOLUNTEER FIRE DEPARTMENT	16
FERNWOOD VOLUNTEER FIRE DEPARTMENT	8
FIREFOX/HINDS COUNTY PENAL FARM	85
FIRST CHEMICAL CORPORATION	51
FISHER FERRY VOLUNTEER FIRE DEPARTMENT	15
FLORA FIRE DEPARTMENT	7
FLORENCE-CITY OF	9
FLORENCE VOLUNTEER FIRE DEPARTMENT	10
FLOWOOD FIRE DEPARTMENT	295
FLOWOOD POLICE DEPARTMENT	30
FOREST FIRE DEPARTMENT	17
FORT BAYOU VOLUNTEER FIRE DEPARTMENT	80
FORTS LAKE/FRANKLIN CREEK VOLUNTEER FIRE DEPARTMENT	24
FOSTER MOUND VOLUNTEER FIRE DEPARTMENT	25
FOXWORTH VOLUNTEER FIRE DEPARTMENT	20
FRANKLIN COUNTY DISTRICT 5 / VOLUNTEER FIRE DEPARTMENT	18
FRANKLIN COUNTY SHERIFF'S DEPARTMENT	1
FRENCH CAMP VOLUNTEER FIRE DEPARTMENT	1
FRIENDSHIP VOLUNTEER FIRE DEPARTMENT	5
FULTON FIRE DEPARTMENT	10
FURRS VOLUNTEER FIRE DEPARTMENT	1
GAUTIER FIRE DEPARTMENT	49
GEESLIN CORNER VOLUNTEER FIRE DEPARTMENT	6
GEORGE COUNTY EMERGENCY MANAGEMENT	1
GEORGE COUNTY FIRE COORDINATOR	1
GEORGETOWN VOLUNTEER FIRE DEPARTMENT	11
GEORGIA PACIFIC LEAF RIVER CELLULOSE FIR	38
GIBBSTOWN / LAWRENCE VOLUNTEER FIRE DEPARTMENT	2
GLADE VOLUNTEER FIRE DEPARTMENT	16
GLEN VOLUNTEER FIRE DEPARTMENT	2
GLUCKSTADT FIRE PROTECTION DISTRICT	20
GOLDEN TRIANGLE REGIONAL AIRPORT/BAPTIST	3
GOLDEN VOLUNTEER FIRE DEPARTMENT	5
GONZALES LA FIRE DEPARTMENT	21
GORE SPRINGS VOLUNTEER FIRE DEPARTMENT	32
GRANBY VOLUNTEER FIRE DEPARTMENT	5
GRAND GULF NUCLEAR STATION	64
GRAVEL HILL VOLUNTEER FIRE DEPARTMENT	2
GREENE COUNTY SHERIFF'S DEPARTMENT	2
GREENFIELD VOLUNTEER FIRE DEPARTMENT	1



2013 PARTICIPATION REPORT BY ORGANIZATION (Cont.)

Organization Name	Student Count
GREENVILLE FIRE DEPARTMENT	116
GREENVILLE MID-DELTA AIRPORT	4
GREENWOOD FIRE DEPARTMENT	133
GRENADA COUNTY CIVIL DEFENSE	3
GRENADA COUNTY SHERIFF'S DEPARTMENT	4
GRENADA FIRE DEPARTMENT	44
GULF PARK ESTATES/ST. ANDREWS FIRE DISTRICT	8
GULFPORT CITY OF	4
GULFPORT FIRE DEPARTMENT	320
H.A.L. VOLUNTEER FIRE DEPARTMENT	1
HAMILTON VOLUNTEER FIRE DEPARTMENT/MONROE CTY	13
HANCOCK COUNTY EMERGENCY MANAGEMENT	12
HANCOCK COUNTY SHERIFF'S DEPARTMENT	1
HARMONY/CENTRAL VOLUNTEER FIRE DEPARTMENT	1
HARPERVILLE FIRE DEPARTMENT	3
HARRISON COUNTY CIVIL DEFENSE	9
HARRISON COUNTY FIRE SERVICE	114
HARRISON COUNTY SHERIFF'S DEPARTMENT	5
HARRISVILLE VOLUNTEER FIRE DEPARTMENT	4
HATLEY VOLUNTEER FIRE DEPARTMENT	6
HATTIESBURG FIRE DEPARTMENT	97
HATTIESBURG/LAUREL REGIONAL AIRPORT AUTHORITY	4
HAZLEHURST FIRE DEPARTMENT	14
HAZLEHURST VOLUNTEER FIRE DEPARTMENT	18
HEIDELBERG VOLUNTEER FIRE DEPARTMENT	7
HENDERSON POINT VOLUNTEER FIRE DEPARTMENT	4
HENLEYFIELD VOLUNTEER FIRE DEPARTMENT	4
HERNANDO FIRE DEPARTMENT	28
HEUCKS RETREAT VOLUNTEER FIRE DEPARTMENT	6
HICKORY FLAT VOLUNTEER FIRE DEPARTMENT	3
HICKORY VOLUNTEER FIRE DEPARTMENT/NEWTON COUNTY	4
HILLSBORO VOLUNTEER FIRE DEPARTMENT	5
HINDS COUNTY EMERGENCY MANAGEMENT	24
HINDS COUNTY SHERIFF'S DEPARTMENT	4
HINDS COUNTY VOLUNTEER FIRE DEPARTMENT	2
HOBO-BIG V VOLUNTEER FIRE DEPARTMENT	2
HOLLANDALE POLICE DEPARTMENT	2
HOLLANDALE VOLUNTEER FIRE DEPARTMENT	17
HOLLY BLUFF VOLUNTEER FIRE DEPARTMENT	17
HOLLY SPRINGS FIRE DEPARTMENT	112
HOLMES COUNTY SHERIFF'S DEPARTMENT	4
HOLTSPUR VOLUNTEER FIRE DEPARTMENT	1
HOPEWELL VOLUNTEER FIRE DEPARTMENT/COPIAH COUNTY	25



2013 PARTICIPATION REPORT BY ORGANIZATION (Cont.)

Organization Name	Student Count
HORN LAKE FIRE DEPARTMENT	31
HOT COFFEE VOLUNTEER FIRE DEPARTMENT	8
HOULKA VOLUNTEER FIRE DEPARTMENT	9
HOUSE VOLUNTEER FIRE DEPARTMENT	16
HOUSTON COMMUNITY/DISTRICT 2 FIRE DEPARTMENT	7
HOUSTON FIRE DEPARTMENT	11
HUNT SOUTHLAND REFINING COMPANY	2
HUNTINGTON INGALLS INC	2
HURRICANE VOLUNTEER FIRE DEPARTMENT	3
HUTCHINSON FIRE DEPARTMENT	1
HWY 84 WEST VOLUNTEER FIRE DEPARTMENT	5
IBERIA PARISH FIRE PROTECTION DISTRICT #1	2
INDEPENDENCE VOLUNTEER FIRE DEPARTMENT	3
INDIAN MOUND VOLUNTEER FIRE DEPARTMENT	9
INDIANOLA CITY OF	2
INDIANOLA FIRE DEPARTMENT	50
INGOMAR VOLUNTEER FIRE DEPARTMENT	29
INTERNATIONAL PAPER COMPANY-VICKSBURG MILL	12
INVERNESS VOLUNTEER FIRE DEPARTMENT	5
ISOLA VOLUNTEER FIRE DEPARTMENT	7
ISSAQUENA COUNTY SHERIFF'S DEPARTMENT	1
ITAWAMBA COUNTY SHERIFF'S DEPARTMENT	2
ITTA BENA VOLUNTEER FIRE DEPARTMENT	17
IUKA FIRE DEPARTMENT	4
JACKSON COUNTY EMA	3
JACKSON COUNTY FIRE COORDINATOR	4
JACKSON COUNTY FIRE DISTRICT	180
JACKSON COUNTY SHERIFF'S DEPARTMENT	13
JACKSON FIRE DEPARTMENT	17
JACKSON POLICE DEPARTMENT	6
JACKSON-CITY OF-MAYOR'S OFFICE	17
JANICE VOLUNTEER FIRE DEPARTMENT	1
JASPER COUNTY SHERIFF'S DEPARTMENT	1
JEFFERSON COUNTY SHERIFF'S DEPARTMENT	2
JEFFERSON DAVIS COUNTY ARSON INVEST.	1
JEFFERSON DAVIS COUNTY FIRE COORDINATOR	1
JOHNSON VOLUNTEER FIRE DEPARTMENT	17
JONATHAN VOLUNTEER FIRE DEPARTMENT	5
JONES COUNTY SHERIFF'S DEPARTMENT	1
KEARNEY PARK VOLUNTEER FIRE DEPARTMENT	3
KEMPER COUNTY DISTRICT 3 VOLUNTEER FIRE DEPARTMENT	8
KEMPER SPRINGS VOLUNTEER FIRE DEPARTMENT	6
KILMICHAEL VOLUNTEER FIRE DEPARTMENT	5



2013 PARTICIPATION REPORT BY ORGANIZATION (Cont.)

Organization Name	Student Count
KILN VOLUNTEER FIRE DEPARTMENT	14
KINGSTON VOLUNTEER FIRE DEPARTMENT	16
KOSCIUSKO FIRE DEPARTMENT	102
KOSCIUSKO-ATTALA COUNTY E911	2
LAFAYETTE COUNTY CIVIL DEFENSE	1
LAFAYETTE COUNTY FIRE DEPARTMENT	163
LAFAYETTE COUNTY FIRE TRAINING OFFICER	1
LAFAYETTE COUNTY SHERIFF'S DEPARTMENT	4
LAFAYETTE REGIONAL AIRPORT/RURAL METRO	10
LAKE EDDINS VOLUNTEER FIRE DEPARTMENT	11
LAKE HARBOR VOLUNTEER FIRE DEPARTMENT	21
LAKE MONTROSE VOLUNTEER FIRE DEPARTMENT	1
LAKE VOLUNTEER FIRE DEPARTMENT/SCOTT COUNTY	4
LAMAR COUNTY FIRE COORDINATOR	1
LAMAR COUNTY FIRE SERVICES	58
LAMAR COUNTY SHERIFF'S DEPARTMENT	4
LAMBERT VOLUNTEER FIRE DEPARTMENT	5
LANGFORD VOLUNTEER FIRE DEPARTMENT	45
LAUDERDALE COUNTY FIRE SERVICES	50
LAUDERDALE COUNTY EMERGENCY MANAGEMENT	11
LAUDERDALE COUNTY SHERIFF'S DEPARTMENT	6
LAUDERDALE VOLUNTEER FIRE DEPARTMENT	7
LAUREL FIRE DEPARTMENT	7
LAWRENCE COUNTY FIRE SERVICES	21
LEAKE COUNTY EMA	2
LEAKE COUNTY FIRE COORDINATOR	3
LEAKE COUNTY SHERIFF'S DEPARTMENT	9
LEARNED VOLUNTEER FIRE DEPARTMENT	24
LEE COUNTY SHERIFF'S DEPARTMENT	9
LEESBURG VOLUNTEER FIRE DEPARTMENT	32
LEETOWN VOLUNTEER FIRE DEPARTMENT	18
LEFLORE COUNTY SHERIFF'S DEPARTMENT	1
LELAND FIRE DEPARTMENT	16
LELAND POLICE DEPARTMENT	4
LETOURNEAU COMMUNITY FIRE DEPARTMENT	5
LEWISBURG VOLUNTEER FIRE DEPARTMENT	7
LEXIE VOLUNTEER FIRE DEPARTMENT	5
LIBERTY ROAD VOLUNTEER FIRE DEPARTMENT/ADAMS COUNTY	6
LINCOLN COUNTY SHERIFF'S DEPARTMENT	2
LIZANA VOLUNTEER FIRE DEPARTMENT	35
LONE STAR VOLUNTEER FIRE DEPARTMENT	3
LONG BEACH FIRE DEPARTMENT	33
LONG BEACH POLICE DEPARTMENT	2



2013 PARTICIPATION REPORT BY ORGANIZATION (Cont.)

Organization Name	Student Count
LONG CREEK VOLUNTEER FIRE DEPARTMENT	1
LONGINO CENTRAL VOLUNTEER FIRE DEPARTMENT	2
LONGVIEW VOLUNTEER FIRE DEPARTMENT	9
LOOP, LLC	14
LOOXAHOMA VOLUNTEER FIRE DEPARTMENT	1
LORMAN VOLUNTEER FIRE DEPARTMENT	11
LOUIN VOLUNTEER FIRE DEPARTMENT	11
LOUISE VOLUNTEER FIRE DEPARTMENT	7
LOUISVILLE FIRE DEPARTMENT	46
LOVE VOLUNTEER FIRE DEPARTMENT	19
LOWNDES COUNTY BAPTIST HOSPITAL AMBULANCE SERVICE	2
LOWNDES COUNTY DISTRICT 5/ARTESIA FIRE DEPARTMENT	2
LOWNDES COUNTY E911	4
LOWNDES COUNTY SHERIFF'S DEPARTMENT	5
LUCITE INTERNATIONAL	11
LUDLOW VOLUNTEER FIRE DEPARTMENT	10
LUMBERTON VOLUNTEER FIRE DEPARTMENT	4
MABEN VOLUNTEER FIRE DEPARTMENT	9
MACEDONIA VOLUNTEER FIRE DEPARTMENT	8
MACON VOLUNTEER FIRE DEPARTMENT	17
MADDEN VOLUNTEER FIRE DEPARTMENT	1
MADISON COUNTY EMA	10
MADISON FIRE DEPARTMENT	108
MADISON POLICE DEPARTMENT	57
MAGEE FIRE DEPARTMENT	2
MAGNOLIA VOLUNTEER FIRE DEPARTMENT	5
MANTACHIE FIRE DEPARTMENT	1
MARIETTA VOLUNTEER FIRE DEPARTMENT	3
MARION COUNTY SHERIFF'S DEPARTMENT	1
MARION VOLUNTEER FIRE & RESCUE	5
MARSHALL COUNTY E-911	1
MARSHALL COUNTY EMA	3
MARSHALL COUNTY SHERIFF'S DEPARTMENT	7
MARTIN VOLUNTEER FIRE DEPARTMENT	16
MARYDELL/BARNES VOLUNTEER FIRE DEPARTMENT	4
MASHULAVILLE VOLUNTEER FIRE DEPARTMENT	1
MATHISTON VOLUNTEER FIRE DEPARTMENT	17
MAYERSVILLE VOLUNTEER FIRE DEPARTMENT	5
MCCOMB FIRE DEPARTMENT	22
MCHENRY VOLUNTEER FIRE DEPARTMENT	27
MCLAURIN VOLUNTEER FIRE DEPARTMENT	8
MCNEILL VOLUNTEER FIRE DEPARTMENT	2
MEADVILLE VOLUNTEER FIRE DEPARTMENT	1



2013 PARTICIPATION REPORT BY ORGANIZATION (Cont.)

Organization Name	Student Count
MEEHAN VOLUNTEER FIRE DEPARTMENT	2
MELBOURNE FIRE DEPARTMENT	5
MS EMERGENCY MANAGEMENT AGENCY	7
MEMPHIS, TN FIRE DEPARTMENT	99
MENDENHALL VOLUNTEER FIRE DEPARTMENT	8
MERIDIAN FIRE DEPARTMENT	152
MID-DELTA REGIONAL AIRPORT	5
MIDWAY VOLUNTEER FIRE DEPARTMENT/TISHOMINGO CTY DIS	1
MINTER CITY VOLUNTEER FIRE DEPARTMENT	5
MITCHELL VOLUNTEER FIRE DEPARTMENT	14
MOBILE FIRE & RESCUE DEPARTMENT	26
MONEY VOLUNTEER FIRE DEPARTMENT	17
MONROE COUNTY EMERGENCY MANAGEMENT	1
MONROE COUNTY FIRE COORDINATOR	1
MONROE COUNTY SHERIFF'S DEPARTMENT	1
MONROE FIRE DEPARTMENT	21
MONTEREY VOLUNTEER FIRE DEPARTMENT	17
MONTICELLO FIRE DEPARTMENT	29
MONTPELIER VOLUNTEER FIRE DEPARTMENT	5
MONTROSE VOLUNTEER FIRE DEPARTMENT	9
MOORHEAD VOLUNTEER FIRE DEPARTMENT	21
MORGAN CITY VOLUNTEER FIRE DEPARTMENT	3
MORGANTOWN VOLUNTEER FIRE DEPARTMENT	2
MORTON POLICE DEPARTMENT	2
MOSELLE VOLUNTEER FIRE DEPARTMENT	4
MOSS POINT FIRE DEPARTMENT	66
MOSSVILLE VOLUNTEER FIRE DEPARTMENT	14
MOUND BAYOU VOLUNTEER FIRE DEPARTMENT	7
MOVELLA VOLUNTEER FIRE DEPARTMENT	3
MS AIR GUARD/MERIDIAN/186 REFUELING GROUP	32
MS ANG/AIRPORT FIRE DEPARTMENT 172ND CES	14
MS DEPARTMENT OF ENVIRONMENTAL QUALITY	147
MS GULF COAST COMMUNITY COLLEGE	2
MS GULF COAST COMMUNITY COLLEGE-JEFF DAVIS	2
MS GULF COAST COMMUNITY COLLEGE-PERKINSTON	4
MS GULF COAST COMMUNITY COLLEGE-GAUTIER	14
MS HIGHWAY PATROL-BROOKHAVEN	3
MS HIGHWAY PATROL-HARRISON COUNTY	2
MS HIGHWAY PATROL-HINDS COUNTY	6
MS HIGHWAY PATROL-LAUDERDALE COUNTY	1
MS HIGHWAY PATROL-OKTIBBEHA COUNTY	1
MS HIGHWAY PATROL-PANOLA COUNTY	2
MS HIGHWAY PATROL-UNION COUNTY	3



2013 PARTICIPATION REPORT BY ORGANIZATION (Cont.)

Organization Name	Student Count
MS POWER COMPANY	81
MS STATE PENITENTIARY/PARCHMAN FIRE DEPARTMENT	7
MT. NEBO FIRE DEPARTMENT/KEMPER COUNTY DISTRICT 5	4
MT. OLIVET VOLUNTEER FIRE DEPARTMENT	4
MT. SALEM VOLUNTEER FIRE DEPARTMENT	4
MURPHREESBORO VOLUNTEER FIRE DEPARTMENT	6
MYRICK & MILL CREEK FIRE DEPARTMENT	9
MYRTLE VOLUNTEER FIRE DEPARTMENT	12
N. CENTRAL SCOTT COUNTY/MIDWAY VOLUNTEER FIRE DEPT.	1
N. E. JASPER VOLUNTEER FIRE DEPARTMENT	1
N. E. LAUDERDALE VOLUNTEER FIRE DEPARTMENT	4
N. E. MS COMMUNITY COLLEGE	6
N. BENTON COUNTY VOLUNTEER FIRE DEPARTMENT	5
N. CARROLLTON FIRE DEPARTMENT	10
N. E. BENTON VOLUNTEER FIRE DEPARTMENT	5
N. E. CALHOUN VOLUNTEER FIRE DEPARTMENT	6
N. E. ITAWAMBA/FAIRVIEW FIRE DEPARTMENT	13
N. E. LAMAR VOLUNTEER FIRE DEPARTMENT	26
N. E. UNION FIRE DEPARTMENT	16
N. E. WARREN COUNTY VOLUNTEER FIRE DEPARTMENT	10
N. FORREST COUNTY VOLUNTEER FIRE DEPARTMENT	9
N. W. COVINGTON VOLUNTEER FIRE DEPARTMENT	3
N. W. LOWNDES/DISTRICT 2 FIRE DEPARTMENT	6
N. W. NOXUBEE VOLUNTEER FIRE DEPARTMENT	1
N. WOOLMARKET VOLUNTEER FIRE DEPARTMENT	24
NASHVILLE, TN FIRE DEPARTMENT	1
NATCHEZ FIRE DEPARTMENT	163
NATCHEZ POLICE DEPARTMENT	5
NATCHEZ-ADAMS COUNTY AIRPORT	6
NEELY VOLUNTEER FIRE DEPARTMENT	2
NESBIT VOLUNTEER FIRE DEPARTMENT	17
NESHOPA COUNTY EMA	4
NEW ALBANY FIRE DEPARTMENT	47
NEW HEBRON VOLUNTEER FIRE/RESCUE	1
NEW HOPE VOLUNTEER FIRE DEPARTMENT/KEMPER COUNTY	1
NEW ORLEANS LAKEFRONT FIRE DEPARTMENT	6
NEW SITE VOLUNTEER FIRE DEPARTMENT/PRENTISS COUNTY	4
NEWTON COUNTY FIRE COORDINATOR	2
NEWTON FIRE DEPARTMENT	33
NICHOLSON VOLUNTEER FIRE DEPARTMENT	1
NORTH CAROLINA STATE FIRE TRAINING	2
NORTH HAVEN VOLUNTEER FIRE DEPARTMENT	2
NORTH OKALOOSA FIRE DISTRICT	22



2013 PARTICIPATION REPORT BY ORGANIZATION (Cont.)

Organization Name	Student Count
NORTH PLEASANT HILL FIRE DEPARTMENT	1
NORTH TUNICA COUNTY FIRE PROTECTION DISTRICT	41
NOXAPATER VOLUNTEER FIRE DEPARTMENT	9
OAK BOWERY VOLUNTEER FIRE DEPARTMENT	6
OAK GROVE VOLUNTEER FIRE DEPARTMENT/WALTHALL COUNTY	7
OAK GROVE/BEAT 4 LAMAR COUNTY FIRE DEPARTMENT	13
OAKLEY TRAINING SCHOOL	1
OAKVALE VOLUNTEER FIRE DEPARTMENT	5
OCEAN SPRINGS FIRE DEPARTMENT	50
OCEAN SPRINGS POLICE DEPARTMENT	2
OKOLONA FIRE DEPARTMENT	20
OKTIBBEHA COUNTY DISTRICT 5 FIRE DEPARTMENT	35
OKTIBBEHA COUNTY EMERGENCY MANAGEMENT	2
OKTIBBEHA COUNTY FIRE COORDINATOR	4
OKTIBBEHA COUNTY SHERIFF'S DEPARTMENT	1
OLD PEARL VOLUNTEER FIRE DEPARTMENT	9
OLIVE BRANCH FIRE DEPARTMENT	73
OMA VOLUNTEER FIRE DEPARTMENT	9
O'TUCKOLOFA VOLUNTEER FIRE DEPARTMENT	4
OVETT VOLUNTEER FIRE DEPARTMENT	22
OXFORD FIRE DEPARTMENT	156
PACHUTA VOLUNTEER FIRE DEPARTMENT	15
PADEN VOLUNTEER FIRE DEPARTMENT	18
PANOLA COUNTY SHERIFF'S DEPARTMENT	2
PASCAGOULA FIRE DEPARTMENT	104
PASS CHRISTIAN FIRE DEPARTMENT	25
PAULDING VOLUNTEER FIRE DEPARTMENT	10
PAYNES VOLUNTEER FIRE DEPARTMENT	26
PEARL FIRE DEPARTMENT	174
PEARL POLICE DEPARTMENT	18
PEARL RIVER COUNTY SHERIFF'S DEPARTMENT	1
PELAHATCHIE VOLUNTEER FIRE DEPARTMENT	39
PERKINSTON VOLUNTEER FIRE DEPARTMENT	10
PERRY COUNTY CIVIL DEFENSE	1
PERRY COUNTY SHERIFF'S DEPARTMENT	1
PETAL FIRE DEPARTMENT	9
PHEBA VOLUNTEER FIRE DEPARTMENT/CLAY COUNTY # 500	5
PHILADELPHIA FIRE DEPARTMENT	35
PHILIPP VOLUNTEER FIRE DEPARTMENT	3
PICAYUNE FIRE DEPARTMENT	54
PINE GROVE VOLUNTEER FIRE DEPARTMENT	2
PINE RIDGE VOLUNTEER FIRE DEPARTMENT	11
PINE VALLEY VOLUNTEER FIRE DEPARTMENT	7



2013 PARTICIPATION REPORT BY ORGANIZATION (Cont.)

Organization Name	Student Count
PINEVILLE VOLUNTEER FIRE DEPARTMENT	2
PINOLA VOLUNTEER FIRE DEPARTMENT	7
PISGAH COMMUNITY FIRE DEPARTMENT	11
PITTSBORO VOLUNTEER FIRE DEPARTMENT	1
POAGVILLE VOLUNTEER FIRE DEPARTMENT	2
POCAHONTAS VOLUNTEER FIRE DEPARTMENT	4
POLKVILLE VOLUNTEER FIRE DEPARTMENT	5
PONTOTOC FIRE DEPARTMENT	10
POPE VOLUNTEER FIRE DEPARTMENT	16
POPLAR CREEK VOLUNTEER FIRE DEPARTMENT	6
POPLARVILLE FIRE DEPARTMENT	17
PORT GIBSON FIRE DEPARTMENT	2
PORTERVILLE VOLUNTEER FIRE DEPARTMENT	12
POST 58 VOLUNTEER FIRE DEPARTMENT	1
POTTS CAMP VOLUNTEER FIRE DEPARTMENT	11
POWERS VOLUNTEER FIRE DEPARTMENT	5
PRAIRIE POINT FIRE DEPARTMENT/NOXUBEE CTY DI	6
PRAIRIE VOLUNTEER FIRE DEPARTMENT	12
PRENTISS COUNTY 911	4
PRENTISS COUNTY SHERIFF'S DEPARTMENT	1
PRENTISS VOLUNTEER FIRE DEPARTMENT	14
PRESTON FIRE DEPARTMENT/KEMPER COUNTY DISTRICT 4	1
PRO-TECH FIRE SERVICES LTD	9
PROVIDENCE STATION VOLUNTEER FIRE DEPARTMENT	1
PUCKETT VOLUNTEER FIRE DEPARTMENT	3
PURVIS POLICE DEPARTMENT	3
PURVIS VOLUNTEER FIRE DEPARTMENT	26
QUITMAN COUNTY SHERIFF'S DEPARTMENT	4
QUITMAN VOLUNTEER FIRE DEPARTMENT	2
RALEIGH VOLUNTEER FIRE DEPARTMENT	10
RAMSEY SPRINGS VOLUNTEER FIRE DEPARTMENT	6
RANDOLPH VOLUNTEER FIRE DEPARTMENT	3
RANKIN COUNTY EOC	15
RANKIN COUNTY SHERIFF'S DEPARTMENT	17
RAWLS SPRINGS VOLUNTEER FIRE DEPARTMENT	2
RAYMOND VOLUNTEER FIRE DEPARTMENT	22
RED BANKS FIRE DEPARTMENT	3
REDLICK VOLUNTEER FIRE DEPARTMENT	1
REFORMATION VOLUNTEER FIRE DEPARTMENT/LEAKE COUNTY	1
RESERVOIR FIRE PROTECTION DISTRICT	32
RHODES CHAPEL VOLUNTEER FIRE DEPARTMENT	5
RICHLAND FIRE DEPARTMENT	41
RICHMOND VOLUNTEER FIRE DEPARTMENT	2



2013 PARTICIPATION REPORT BY ORGANIZATION (Cont.)

Organization Name	Student Count
RIGHTON VOLUNTEER FIRE DEPARTMENT	1
RIDGELAND FIRE DEPARTMENT	63
RIDGELAND POLICE DEPARTMENT	1
RIPLEY VOLUNTEER FIRE DEPARTMENT	4
RIVERSIDE VOLUNTEER FIRE DISTRICT	43
ROBINHOOD VOLUNTEER FIRE DEPARTMENT	36
ROCK HILL VOLUNTEER FIRE DEPARTMENT	17
ROCKY CREEK VOLUNTEER FIRE DEPARTMENT	2
ROGERS FIRE DEPARTMENT	2
ROLLING CREEK VOLUNTEER FIRE DEPARTMENT	3
ROLLING FORK VOLUNTEER FIRE DEPARTMENT	11
ROSE HILL VOLUNTEER FIRE DEPARTMENT	8
ROXIE VOLUNTEER FIRE DEPARTMENT	5
RULEVILLE VOLUNTEER FIRE DEPARTMENT	8
RUNNELSTOWN VOLUNTEER FIRE DEPARTMENT	7
RURAL HILL VOLUNTEER FIRE DEPARTMENT	8
RURAL METRO CORPORATION FIRE DEPARTMENT	1
RURAL METRO FIRE DEPARTMENT/FED EX	14
RURAL METRO FIRE DEPARTMENT/SIKORSKY	18
RURAL METRO FIRE RESCUE/W. PALM BEACH	10
RUSSELL FIRE & RESCUE	1
RUSTON VOLUNTEER FIRE DEPARTMENT	11
RYANS WELL VOLUNTEER FIRE DEPARTMENT	2
S. E. CHICKASAW FIRE DEPARTMENT	16
S. E. CLAY COUNTY/# 700 FIRE DEPARTMENT	1
S. E. COVINGTON VOLUNTEER FIRE DEPARTMENT	1
S. E. LAMAR VOLUNTEER FIRE DEPARTMENT	6
S. E. UNION FIRE DEPARTMENT	21
S. JONES VOLUNTEER FIRE DEPARTMENT	3
S. LAUDERDALE VOLUNTEER FIRE DEPARTMENT	5
S. LEE COUNTY VOLUNTEER FIRE DEPARTMENT	2
S. MARION VOLUNTEER FIRE DEPARTMENT	5
S. W. ALCORN VOLUNTEER FIRE DEPARTMENT	2
S. W. JONES VOLUNTEER FIRE DEPARTMENT	2
S. W. LAMAR VOLUNTEER FIRE DEPARTMENT	9
SALEM VOLUNTEER FIRE DEPARTMENT	3
SALTILLO FIRE DEPARTMENT	19
SAM DALE COMMUNITY VOLUNTEER FIRE DEPARTMENT	2
SANDERSVILLE VOLUNTEER FIRE DEPARTMENT	8
SAND HILL FIRE DEPARTMENT/GREENE COUNTY BEAT 3	5
SARDIS VOLUNTEER FIRE DEPARTMENT	2
SAUCIER VOLUNTEER FIRE DEPARTMENT	8
SAVANNAH FIRE DEPARTMENT/NOXUBEE COUNTY DISTRICT 2	2



2013 PARTICIPATION REPORT BY ORGANIZATION (Cont.)

Organization Name	Student Count
SCHLATER VOLUNTEER FIRE DEPARTMENT	4
SCOOBA VOLUNTEER FIRE DEPARTMENT	4
SEBASTOPOL VOLUNTEER FIRE DEPARTMENT	6
SENATOBIA FIRE DEPARTMENT	28
SHADY GROVE VOLUNTEER FIRE DEPARTMENT	16
SHANNON VOLUNTEER FIRE DEPARTMENT	21
SHARKEY COUNTY SHERIFF'S DEPARTMENT	2
SHARKEY HAMPTON VOLUNTEER FIRE DEPARTMENT	4
SHARON VOLUNTEER FIRE DEPARTMENT	2
SHELBY VOLUNTEER FIRE DEPARTMENT/ BOLIVAR CTY DISTRICT	1
SHELL ROAD VOLUNTEER FIRE DEPARTMENT	13
SHERMAN VOLUNTEER FIRE DEPARTMENT	5
SHIPMAN VOLUNTEER FIRE DEPARTMENT	2
SHUBUTA VOLUNTEER FIRE DEPARTMENT	2
SHUQUALAK VOLUNTEER FIRE DEPARTMENT	17
SILVER CREEK VOLUNTEER FIRE DEPARTMENT	3
SILVER RUN VOLUNTEER FIRE DEPARTMENT	5
SIMPSON COUNTY FIRE STATION # 7	11
SIMPSON COUNTY SHERIFF'S DEPARTMENT	1
SIPSEY RIVER VOLUNTEER FIRE DEPARTMENT	1
SKUNA VALLEY VOLUNTEER FIRE DEPARTMENT	4
SLAYDEN-MT. PLEASANT FIRE DEPARTMENT	7
SLEDGE VOLUNTEER FIRE DEPARTMENT	1
SMITH COUNTY EMA	2
SMITHVILLE VOLUNTEER FIRE DEPARTMENT	4
SMYRNA VOLUNTEER FIRE DEPARTMENT	5
SNELL VOLUNTEER FIRE DEPARTMENT	3
SNOW LAKE VOLUNTEER FIRE DEPARTMENT	11
SONTAG VOLUNTEER FIRE DEPARTMENT	13
SOUTH CAROLINA STATE FIRE TRAINING DIRECTOR	2
SOUTH MS CORRECTIONAL FACILITY	14
SOUTH TISHOMINGO VOLUNTEER FIRE DEPARTMENT	1
SOUTHAVEN FIRE DEPARTMENT	95
SOUTHAVEN POLICE DEPARTMENT	6
SOUTHEAST PEARL RIVER VOLUNTEER FIRE DEPARTMENT	5
SOUTHLAND OIL COMPANY	15
SOUTHWEST MARION VOLUNTEER FIRE DEPARTMENT	11
SOUTHWEST RANKIN VOLUNTEER FIRE DEPARTMENT	8
SPLUNGE VOLUNTEER FIRE DEPARTMENT	2
SPOUT SPRINGS VOLUNTEER FIRE DEPARTMENT	11
SPRING HILL VOLUNTEER FIRE DEPARTMENT/KEMPER COUNTY	3
SPRINGHILL VOLUNTEER FIRE DEPARTMENT/TALLAHATCHIE CO.	6
ST. TAMMANY, LA FIRE DIST #1	6



2013 PARTICIPATION REPORT BY ORGANIZATION (Cont.)

Organization Name	Student Count
STAMPLEY VOLUNTEER FIRE DEPARTMENT	3
STANDING PINE VOLUNTEER FIRE DEPARTMENT	4
STAR VOLUNTEER FIRE DEPARTMENT	24
STARKVILLE FIRE DEPARTMENT	148
STATE FIRE MARSHAL'S OFFICE	18
STEEP HOLLOW VOLUNTEER FIRE DEPARTMENT	1
STONE COUNTY CIVIL DEFENSE	5
STONE COUNTY SHERIFF'S DEPARTMENT	6
STONEWALL VOLUNTEER FIRE DEPARTMENT	2
STRINGER VOLUNTEER FIRE DEPARTMENT	9
STRONG HOPE VOLUNTEER FIRE DEPARTMENT	6
STURGIS/DIST. 4 VOLUNTEER FIRE DEPARTMENT	4
SUMMIT VOLUNTEER FIRE DEPARTMENT/PIKE COUNTY	10
SUMRALL VOLUNTEER FIRE DEPARTMENT	31
SUNFLOWER COUNTY EMA	1
SUNFLOWER COUNTY SHERIFF'S DEPARTMENT	4
SUNFLOWER VOLUNTEER FIRE DEPARTMENT	10
SUNNYHILL VOLUNTEER FIRE DEPARTMENT	7
SUNRISE VOLUNTEER FIRE DEPARTMENT	3
SUQUALENA VOLUNTEER FIRE DEPARTMENT	11
SYLVARENA VOLUNTEER FIRE DEPARTMENT/SMITH COUNTY	9
SYLVARENA VOLUNTEER FIRE DEPARTMENT/YALOBUSHA COUNTY	3
TALLAHATCHIE COUNTY FIRE COORDINATOR	4
TALLAHATCHIE COUNTY SHERIFF'S DEPARTMENT	1
TASK FORCE 1 - MISSISSIPPI	13
TASK FORCE 2 - MISSISSIPPI	16
TASK FORCE 3 - MISSISSIPPI	14
TATE & LYLE	15
TATE COUNTY DISTRICT 1 FIRE DEPARTMENT	8
TATE COUNTY FIRE COORDINATOR	1
TATE COUNTY SHERIFF'S DEPARTMENT	2
TAYLORSVILLE VOLUNTEER FIRE DEPARTMENT	15
TEASDALE VOLUNTEER FIRE DEPARTMENT	4
TENNESSEE FIRE: CODES ENFORCEMENT ACADEMY	2
TERRY VOLUNTEER FIRE DEPARTMENT	12
THAXTON VOLUNTEER FIRE DEPARTMENT	10
THEADVILLE VOLUNTEER FIRE DEPARTMENT	4
THORN VOLUNTEER FIRE DEPARTMENT	4
THRASHER VOLUNTEER FIRE DEPARTMENT	4
TIBBEE VOLUNTEER FIRE DEPARTMENT/CLAY COUNTY #200	2
TIE PLANT VOLUNTEER FIRE DEPARTMENT	30
TILDEN-NEW SALEM FIRE DEPARTMENT	14
TILLATOBA VOLUNTEER FIRE DEPARTMENT	6



2013 PARTICIPATION REPORT BY ORGANIZATION (Cont.)

Organization Name	Student Count
TIPPAH COUNTY FIRE COORDINATOR	1
TIPPAH COUNTY SHERIFF'S DEPARTMENT	7
TISHOMINGO COUNTY FIRE COORDINATOR	2
TISHOMINGO COUNTY SHERIFF'S DEPARTMENT	1
TOMNOLEN VOLUNTEER FIRE DEPARTMENT	3
TOOMSUBA VOLUNTEER FIRE DEPARTMENT	14
TOPEKA/DIST 3 VOLUNTEER FIRE DEPARTMENT	10
TREMONT/DIST. 4 VOLUNTEER FIRE DEPARTMENT	3
TRI-COMMUNITY VOLUNTEER FIRE DEPARTMENT/MARION CO.	65
TRI-COMMUNITY VOLUNTEER FIRE DEPARTMENT/YAZOO CO.	21
TUCKER VOLUNTEER FIRE DEPARTMENT	1
TUNICA COUNTY SHERIFF'S DEPARTMENT	6
TUNICA VOLUNTEER FIRE DEPARTMENT	47
TUPELO AIRPORT AUTHORITY	8
TUPELO FIRE DEPARTMENT	69
TUSCALOOSA FIRE DEPARTMENT	1
TUSCUMBIA/NEW CHANDLER VOLUNTEER FIRE DEPARTMENT	2
TUTWILER VOLUNTEER FIRE DEPARTMENT	5
TWIN CREEK VOLUNTEER FIRE DEPARTMENT	10
TYLERTOWN VOLUNTEER FIRE DEPARTMENT	7
U.S. ENVIRONMENTAL SERVICES	2
U.S. FOREST SERVICE	25
UNCODED DEPARTMENT OR INDUSTRY	168
UNION CHURCH VOLUNTEER FIRE DEPARTMENT	7
UNION COUNTY EMA	1
UNION COUNTY SHERIFF'S DEPARTMENT	3
UNION VOLUNTEER FIRE DEPARTMENT/CHOCTAW COUNTY	1
UNION VOLUNTEER FIRE DEPARTMENT/JONES COUNTY	4
UNION VOLUNTEER FIRE DEPARTMENT/NEWTON COUNTY	4
UNION VOLUNTEER FIRE DEPARTMENT/PANOLA COUNTY	2
UNITY VOLUNTEER FIRE DISTRICT	4
UNIVERSITY OF MISSISSIPPI POLICE DEPARTMENT	9
UNIVERSITY OF MISSISSIPPI / OXFORD	9
USES	2
VAIDEN VOLUNTEER FIRE DEPARTMENT	8
VALERO REFINING-MERAUX LLC	12
VALLEY GROVE VOLUNTEER FIRE DEPARTMENT	2
VAN VLEET VOLUNTEER FIRE DEPARTMENT	9
VARDAMAN VOLUNTEER FIRE DEPARTMENT	7
VAUGHN VOLUNTEER FIRE DEPARTMENT	1
VELMA VOLUNTEER FIRE DEPARTMENT	23
VERONA FIRE DEPARTMENT	11
VICKSBURG FIRE DEPARTMENT	139



2013 PARTICIPATION REPORT BY ORGANIZATION (Cont.)

Organization Name	Student Count
VICKSBURG-WARREN 911	1
VICTORIA FIRE DEPARTMENT	7
VIMVILLE VOLUNTEER FIRE DEPARTMENT	15
WALLS FIRE DEPARTMENT	64
WALNUT VOLUNTEER FIRE DEPARTMENT	56
WALTERS VOLUNTEER FIRE DEPARTMENT	33
WALTHALL COUNTY 3RD DIST FIRE DEPARTMENT	2
WALTHALL COUNTY 4TH DIST VOLUNTEER FIRE DEPARTMENT	7
WALTHALL COUNTY SHERIFF'S DEPARTMENT	4
WARREN COUNTY EMERGENCY MANAGEMENT	4
WARREN COUNTY SHERIFF'S DEPARTMENT	18
WASHINGTON COUNTY SHERIFF'S DEPARTMENT	2
WATER VALLEY FIRE DEPARTMENT	5
WATSON VOLUNTEER FIRE DEPARTMENT	14
WAVELAND FIRE DEPARTMENT	2
WAYNE COUNTY BEAT 4 FIRE DEPARTMENT	1
WAYNE COUNTY CENTRAL FIRE STATION	62
WAYNE COUNTY GENERAL HOSPITAL	1
WAYNESBORO FIRE DEPARTMENT	17
WEBSTER COUNTY FIRE COORDINATOR	1
WEBSTER COUNTY SHERIFF'S DEPARTMENT	4
WEIR VOLUNTEER FIRE DEPARTMENT	9
WENASOGA VOLUNTEER FIRE DEPARTMENT	2
WESSON VOLUNTEER FIRE DEPARTMENT	51
WEST HANCOCK VOLUNTEER FIRE DEPARTMENT	11
WEST HARRISON VOLUNTEER FIRE DEPARTMENT	6
WEST HINDS VOLUNTEER FIRE DEPARTMENT	14
WEST JACKSON COUNTY VOLUNTEER FIRE DEPARTMENT	1
WEST UNION VOLUNTEER FIRE DEPARTMENT	5
WHEELER VOLUNTEER FIRE DEPARTMENT	16
WIGGINS FIRE DEPARTMENT	11
WINONA FIRE DEPARTMENT	11
WOODLAND VOLUNTEER FIRE DEPARTMENT	17
WOODVILLE VOLUNTEER FIRE DEPARTMENT	12
WREN VOLUNTEER FIRE DEPARTMENT	9
WYATTE-CHULAHOMA FIRE DEPARTMENT/MARSHALL COUNTY	1
WYATTE-CHULAHOMA VOLUNTEER FIRE DEPARTMENT/TATE CTY	3
YALOBUSHA COUNTY SHERIFF'S DEPARTMENT	1
YAZOO CITY FIRE DEPARTMENT	14



**“Making A Difference
When It Matters
The Most”**

