

FY 2014 ANNUAL REPORT

MISSISSIPPI STATE FIRE ACADEMY

**“MAKING A DIFFERENCE,
WHEN IT MATTERS THE MOST”**



A Division of the Mississippi Insurance Department



Mississippi State Fire Academy Advisory Board

**President of the
Mississippi Fire Chiefs Association
Chief Terry Tucker**

**President of the
Mississippi Fire Fighters Association
Chief John Pope**

**State Fire Marshal's Office
Chief Deputy Ricky Davis**

**President of the
Mississippi Association of Supervisors
Mr. Joe Andy Helton**

**President of the
Mississippi Municipal League
Mayor Alton Shaw**

**Manager of the
State Rating Bureau
Mr. Joe Shumaker**



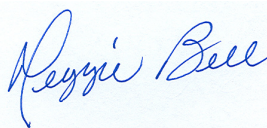
Index

Advisory Board.....	2
Index.....	3
Executive Summary.....	4
From Executive Director Reggie Bell.....	5
Introduction.....	6
Campus Facility.....	7-10
Staffing.....	10
Organizational Chart.....	11
State Fire Academy of Mississippi Financial Statement.....	12
Grant Information.....	13
Statistics.....	14
Students Trained by County of Sending Organization.....	15
Certification Bureau.....	16-17
Extension Services Bureau.....	18-19
Special/Industrial Bureau.....	20-21
Other Training & Services.....	22-23
Adjunct Instructors.....	24
Organizational Affiliates.....	25
FY 2014 Participation Report by Type of Program.....	26-31
FY 2014 Participation Report by Organization.....	32-51



It is with great pleasure that I present to you the 2014 Annual Report of the Mississippi State Fire Academy. Two thousand fourteen was a tremendous year for the Academy, marked by major accomplishments that promote our commitment to excellence and our dedication to service.

We would like to thank you for your continued support of the fire service in the State of Mississippi and the State Fire Academy as we continue to be one of the nation's best fire and emergency response training centers.



Executive Director



From Executive Director Reggie Bell

When the Mississippi legislature created the Mississippi State Fire Academy and designated it as the agency for training the state's fire personnel, I am certain they could not have foreseen the growth and progress that would shape the Academy as it exists today. Many changes have occurred in the forty years since the Academy was built. We now train approximately 15,000 students per year by offering more than ninety courses, many with multiple deliveries, and many offered both on campus and off-site through our field delivery program. Our students come from career and volunteer fire departments throughout Mississippi, fire departments outside the state, and even from the private sector. Over the years, business and industrial entities including many Fortune 500 companies have entrusted the Mississippi State Fire Academy with training their employees in fire and emergency response.

Certainly, technology has advanced tremendously in the last forty years, and the Mississippi State Fire Academy remains at the forefront of that advancement. Classrooms and other facilities on campus are equipped with wireless Internet, webcasting, and teleconferencing capabilities. These assets provide us the flexibility to innovate our instruction methods and course delivery platforms as the needs of the students, and the departments and communities they serve, change. We are also well-positioned to continue to adapt in a constantly evolving technological world.

In addition to training those who seek careers in fire fighting and emergency response, we consider it a vital part of our mission to educate ordinary Mississippi citizens about fire prevention and safety. To that end, we offer schools, clubs, and civic groups the opportunity to visit our campus, tour the facilities, and learn how they can help minimize the potential for loss of life and property due to fire. There is no charge for these tours.

A program that has gained tremendous attention is our Fire Academy for Elected/Public Officials. This program is designed to be a fun day. It familiarizes the elected/public officials with the basic duties and operations of their local fire departments. Elected/public officials from state, municipal, and county governments have attended this one-day course. Fire departments have benefitted from the experience and knowledge their government leaders gain in this course.

I am proud to say that for the past forty years and far into the future, the Mississippi State Fire Academy has been and will be...

"Making a Difference When It Matters the Most..."



Introduction

State Fire Academy Mission Statement

To serve the Mississippi Fire Service Community and the World by providing quality education and training in fundamental and advanced skills to save lives and property.
"Making A Difference When It Matters The Most!"

Enabling Legislation

MS Code Annotated Section 45-11-7:

The State Fire Academy was created for the purpose of training and education of persons engaged in municipal, county and industrial fire protection.

The Academy is officially designated as the agency of this state to conduct training for fire personnel on a statewide basis to all duly constituted fire departments.

MS Code Annotated Section 45-11-5:

Creation of a separate account known as the "State Fire Academy Fund" for the deposit of a tax of one-half of one percent (1/2 of 1%) of the gross premium receipts of fire insurance policies levied in the state.

MS Code Annotated Section 45-11-7:

The Academy is designated as a division (sub agency) of the Insurance Department.

MS Code Annotated Section 45-11-203:

Within one year of employment, all paid full time fire fighters shall be certified as completing the mandatory training requirements administered by the State Fire Academy.

MS Code Annotated Section 83-1-39:

Requires one member of the sheriff's department to be the county fire investigator and to attend training at the State Fire Academy in arson investigation.

Philosophy

The State Fire Academy is committed and responsible for the training and education of personnel engaged in municipal, county and industrial fire protection. This student body consists of career, volunteer and industrial fire personnel. The Academy has three training areas, which are 1) Certification Services 2) Extension Services and 3) Industrial and Special Services, which all focus on the Academy's only function, which is training. All other areas support the staff and students of these training areas.

The Academy's philosophy is to deliver quality training and instruction to the fire service/emergency response personnel of the State, while adhering to high ethical standards, promoting cooperation among staff with efficiency and integrity in their work while representing the Academy in a professional, courteous, and helpful manner at all times, and safeguarding the assets of the State. The Academy is committed to providing excellent service to its customers by providing training based on National Fire Protection Association (NFPA) standards as well as specialized courses not addressed by NFPA.

Statewide Goal and Benchmark

Public Safety and Order

To protect the public's safety-by providing training to first responders/emergency responders.

The training students receive from the Academy provides them the skills necessary to save lives and property, which will in turn, lower the insurance fire rating which determines the premium rates on business and homeowner's insurance.

Campus Facility:

Construction began in 1974, on the Academy campus in Rankin County, Mississippi. The campus is currently located on approximately 112 acres with more than twenty buildings. Courses are offered to students on or off-campus. Course length can vary from one hour to seven weeks. If on-campus, students may elect to stay in the dormitory, which has seventy-five beds, and they are provided two meals a day in the cafeteria. We currently have seven classrooms, and a dedicated student computer lab/library, in addition to the exercise area for students in the dormitory. Multiple training areas on campus include the following:



A Trench Rescue and Emergency Shoring Prop was completed during fiscal year 2009. The prop consists of approximately seventy feet of space for practice in emergency shoring techniques and to allow several scenarios for rescue operations. The prop was a generous donation of equipment, labor, and material from the Associated General Contractors of Mississippi-Municipal Contractors Division. The value of the prop is estimated at a quarter of a million dollars.



The Fire Research Building simulates a three-story residential structure with an attic, and a commercial structure with a basement. The building contains over 4,000 square feet of training space and is equipped with five computer controlled fire/smoke rooms with liquid propane gas fueled fire simulators and a Class A burn room. A four (4) story drill tower is attached to the burn area. The project was completed in November 2006 with authorization by the State Legislature during the 2003 Regular Session of the Mississippi Legislature. During fiscal year 2012, installation of a new fire prop in the Fire Research Building was completed. The prop simulates a couch fire with flashover capabilities, and is computer controlled along with the other four props in the building.



The original Burn Building was constructed in 1974. It has four levels and simulates residential and commercial buildings. Since the completion of the new Fire Research Building in 2006, this building has been converted into a self contained breathing apparatus (SCBA) training area and collapse rescue training building. The SCBA training area utilizes mazes and artificial smoke for training. The collapse rescue area of the building simulates collapsed ceilings, walls, and floors.



The five-story drill tower provides opportunities for high-rise ladder, rope and firefighting operations. In addition to this tower, there is a communications tower erected for training high angle rescue purposes.



The live burn area consists of five large concrete pads as well as one 5,000 square foot airliner fuselage flammable liquid/LP gas burn prop designed specifically to prevent environmental contamination. These training areas include: a fifty foot flowing fuel fire (LP gas Christmas tree fire); LP gas tank fire; pump seal fire; twenty foot vertical tank fire with exposures; horizontal tank fire with an exposed small tank truck; and a three story evolution simulating a chemical processing plant fire.



The hazardous materials training site consists of a large train derailment simulation with eleven cars.



Two lakes are on campus. One is forty feet deep and is utilized for dive rescue training. The other lake is used as a water source for pump testing fire apparatus.



The confined space training site has over 9,000 cubic feet of enclosed area and a forty-five foot tower. The underground area includes vents and drains with several emergency entries/exits.

A forty-one by fourteen foot water vessel is dry docked for the instruction of offshore personnel.



An arson lab is used to build real life room-like structures with furniture to train in arson detection.



Five aircraft simulators are used in the instruction of aircraft rescue training. A landing gear simulator is at this site along with a side-wall aircraft section used in training. We are recognized by the Federal Aviation Administration as an approved training site for this region. Students from all over the United States attend these courses for the required annual training to be in compliance with the FAA regulations.



The Fire Education and Safety Auditorium will seat up to 300 people and is used for graduations and large meetings of the fire service. The building underwent renovation by the Bureau of Buildings and was completed in November of 2012.



The construction and furnishing of four state of the art classrooms was completed in May of 2012. This project has greatly enhanced our facility. Two of the classrooms are theatre style that will seat 50 each, while the other two classrooms are traditional with seating capacity of 30 each. Each of the classrooms has the latest technology for course instruction and wireless capabilities.

Future Enhancements:



Progress has been made on the construction of a new training prop, Structural Collapse Rescue. The prop was designed by staff members and most work is being performed by staff. This prop will consist of material to simulate a collapsed building consisting of concrete, masonry, brick, wood and metal. The training will consist of rescue personnel digging, bracing, shoring, and removing victims of the collapse. Heavy machinery such as bulldozers, backhoes, and cranes will be utilized to remove the debris for the safe rescue training. Anticipated completion of the project is December of 2015.



The National Natural Gas Association, along with Mississippi 811, and the Mississippi Public Service Commission and several energy companies, have begun the construction process for erecting the “Mississippi Safety City” on the Academy campus. The Mississippi Safety City is a one-of-a-kind, small scale city encompassing two acres that will serve as a training facility for natural gas operators, emergency response personnel, and industrial technicians. The city will contain homes, streets, streetlights and natural gas pipelines. Training will include classroom settings as well as real life simulations of natural gas eruptions and responses, and inspection techniques of gas systems. The estimated cost of this project is one million dollars, which will be donated by the sponsors.



The Academy is currently one hundred percent (100%) special funded through an insurance premium tax on insurance policies sold in the state, and course collection fees. Additionally, grant funding is requested and often times received for training emergency response personnel on a statewide basis at little to no cost to the departments/counties.

Staffing:

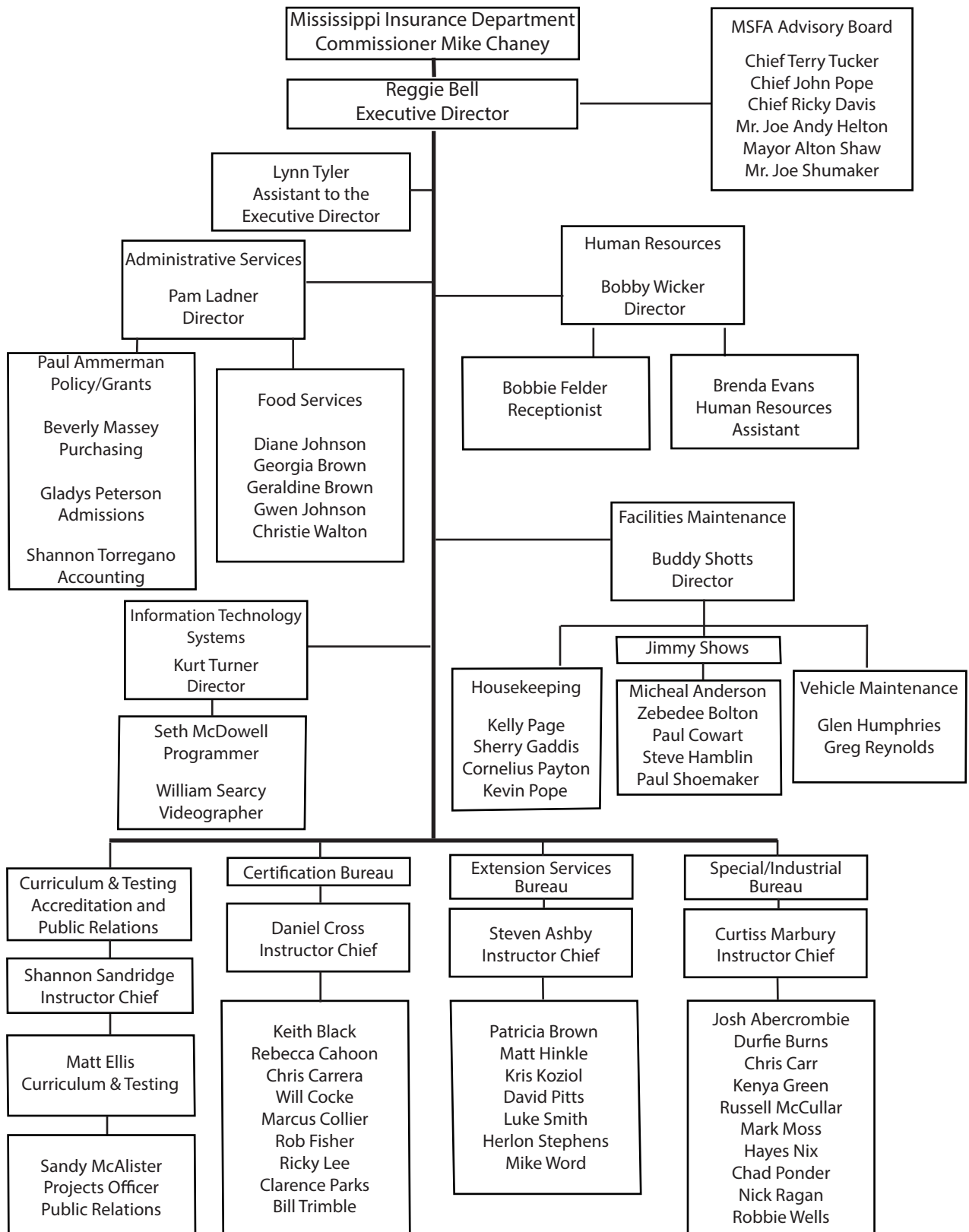
The Academy operates the facility with sixty-three (63) staff members in the following areas:

- Administrative
- Human Resources
- Minimum Standards and Certification Board Secretary
- Information Technology and Videography
- Building, Maintenance, and Vehicle
- Housekeeping
- Cafeteria
- Curriculum/Accreditation and Public Relations
- Instructional Bureaus–Certification, Industrial/Special, Extension Services

The Office of Administrative Services is responsible for the day to day operations of the Academy, student training records and course registration. Human Resources is responsible for staff recruitment, staff training and all employee benefits. The Secretary for the Minimum Standards Board is responsible for all functions related to Board activities. The Informational Technology and Videography Bureau is responsible for all computer systems for staff, the Learning Resource Center for students’ use, custom programming for staff, and videos of class training. The Building, Maintenance, and Vehicle Bureau is responsible for maintaining and repairing all of the agency buildings, equipment, and training props as well as all vehicles owned by the Academy, including Fire Apparatus. Housekeeping is responsible for maintaining the cleanliness of all the buildings, checking students into the dormitory, issuing linens, cleaning rooms, and assisting in grounds keeping when necessary. The Cafeteria Staff is responsible for serving two meals a day to students. The Instructional Bureaus are responsible for all areas of training offered while the Curriculum/Accreditation and Public Relations Bureau is responsible for course accreditation, testing, tours, fire education safety seminars, and publications.



ORGANIZATIONAL CHART





Fund Balance Financial Statement
July 1, 2013 to June 30, 2014

Beginning Fund Balance July 1, 2013:	\$2,741,957.46
Income/Revenue Collections:	
Fire Tax Receipts	\$4,223,880.28
Course Fees and Memorabilia Sales	\$ 933,768.75
Sub Grant Funds-Passed through Other State Agencies	\$ 245,432.91
Federal Grant Funds-Direct	\$ 12,140.91
Other Miscellaneous Income	<u>\$ 22,380.06</u>
Total Income/Revenue Collections:	\$5,437,602.91
Expenses:	
Salaries, Wages, Fringe Benefits	\$3,980,430.10
Travel	\$ 39,800.84
Contractual Services	\$ 462,072.87
Commodities	\$ 502,839.36
Equipment Purchases	\$ 130,743.30
Vehicles	\$ 37,045.00
Cellular Device	\$ 149.99
Resale Merchandise and Other Expenses	<u>\$ 67,162.17</u>
Total Expenses:	\$5,220,243.63
Ending Fund Balance June 30, 2014:	\$2,959,316.74

MS Code Annotated Section 45-11-5:

Creation of a separate account known as the "State Fire Academy Fund" for the deposit of a tax of one-half of one percent (1/2 of 1%) of the gross premium receipts of fire insurance policies levied in the state.

MS Code Annotated Section 45-11-7 (1):

The State Fire Academy was created for the purpose of training and education of persons engaged in municipal, county and industrial fire protection.

The Academy is officially designated as the agency of this state to conduct training for fire personnel on a statewide basis to all duly constituted fire departments.

The Commissioner of Insurance may establish and charge reasonable fees for the training programs and other services provided by the Academy.



Grant Information Fiscal Year 2014

The Academy was able to receive grant funds directly from the Federal Emergency Management Agency/National Fire Academy. This grant was utilized to pay for deliveries state wide of programs offered by the National Fire Academy.

Grant Funds Received: \$11,852.49
Deliveries Offered: 27
Students Participating: 323

The Mississippi Office of Homeland Security under the MS Department of Public Safety, awarded grant funds from the State Homeland Security Program. This grant was utilized for on campus and field delivery programs that have been approved through the Office of Domestic Preparedness. Courses offerings include Rope Rescue, Confined Space Rescue, Hazardous Materials Awareness/Operations, Hazardous Materials Technician, Trench Rescue, and NIMS courses.

Grant Funds Received: \$248,925.95
Deliveries Offered: 33
Students Participating: 537

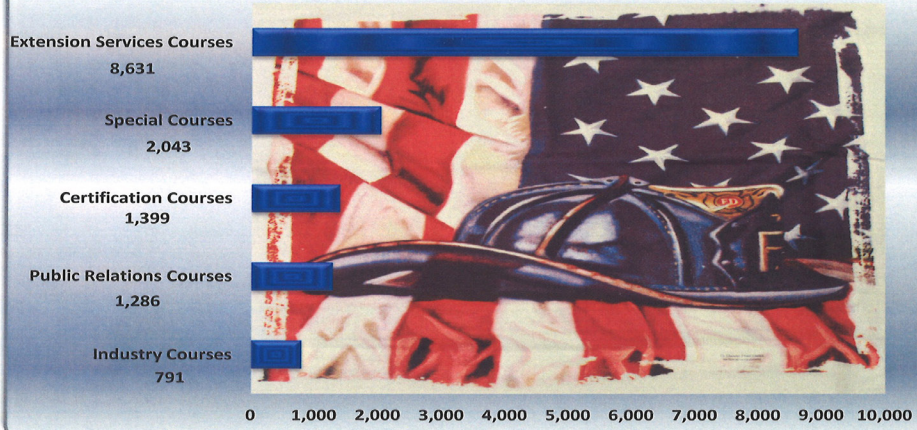
The Mississippi Emergency Management Agency awarded grant funds from the Hazardous Materials Emergency Preparedness, under the U S Department of Transportation. This grant was utilized for the delivery of Hazardous Materials Technician I, Hazardous Materials Technician II, Hazardous Materials Awareness/Operations, and Fire Chemistry.

Grant Funds Received: \$125,395.09
Deliveries Offered: 16
Students Participating: 320

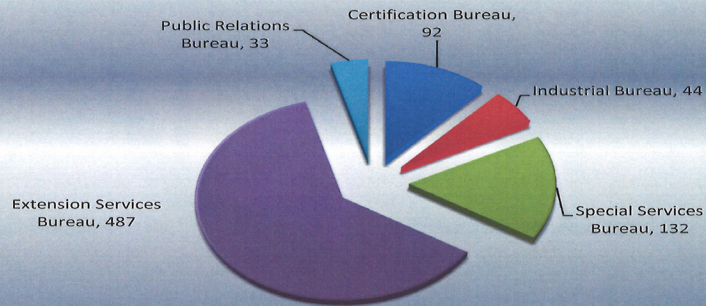
The Mississippi Liquefied Compressed Gas (LC Gas) Board of the Mississippi Insurance Department provided PERC grant funds for classes statewide to help emergency responders better understand the hazards of LP gases and prepare for the response to uncontrolled release of LP gas or fire.

Grant Funds Received: \$56,225.00
Deliveries Offered: 16
Students Participating: 459

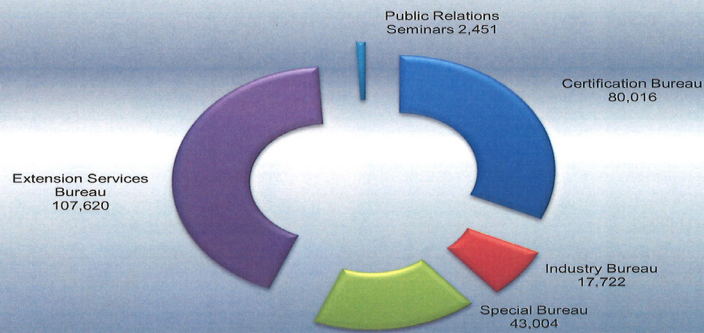
Student Participation by Course Type for Fiscal Year 2014



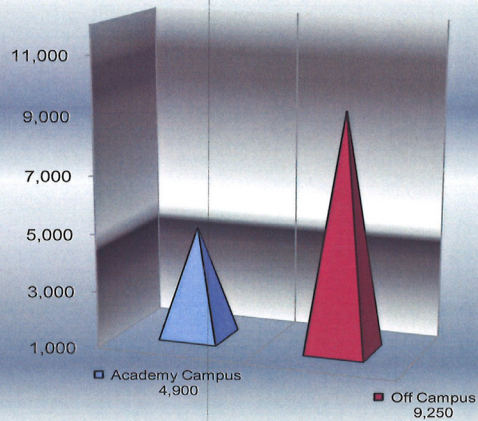
Course Deliveries by Bureau for Fiscal Year 2014



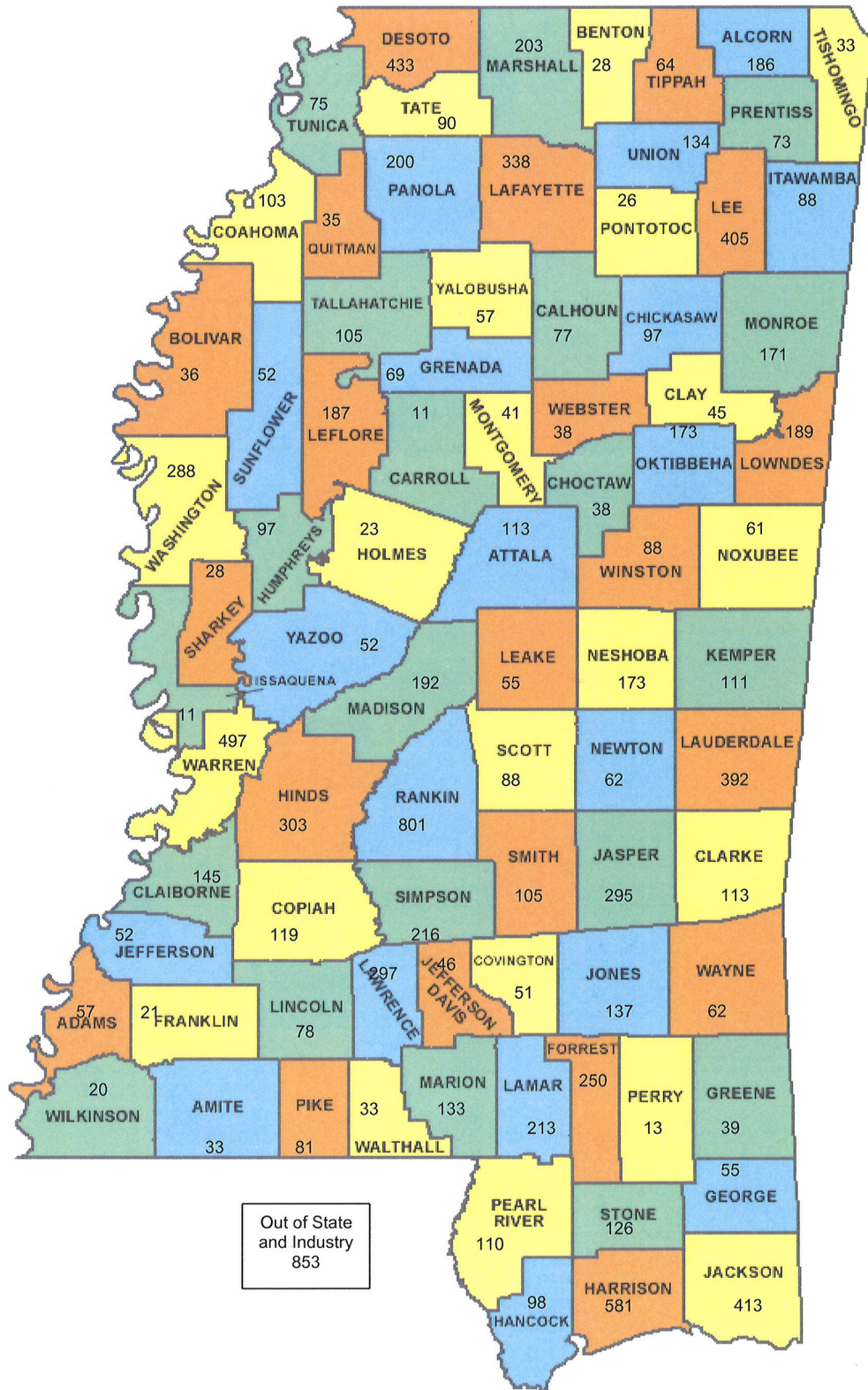
Student Hours by Bureau for Fiscal Year 2014



Students Trained by Location for Fiscal Year 2014

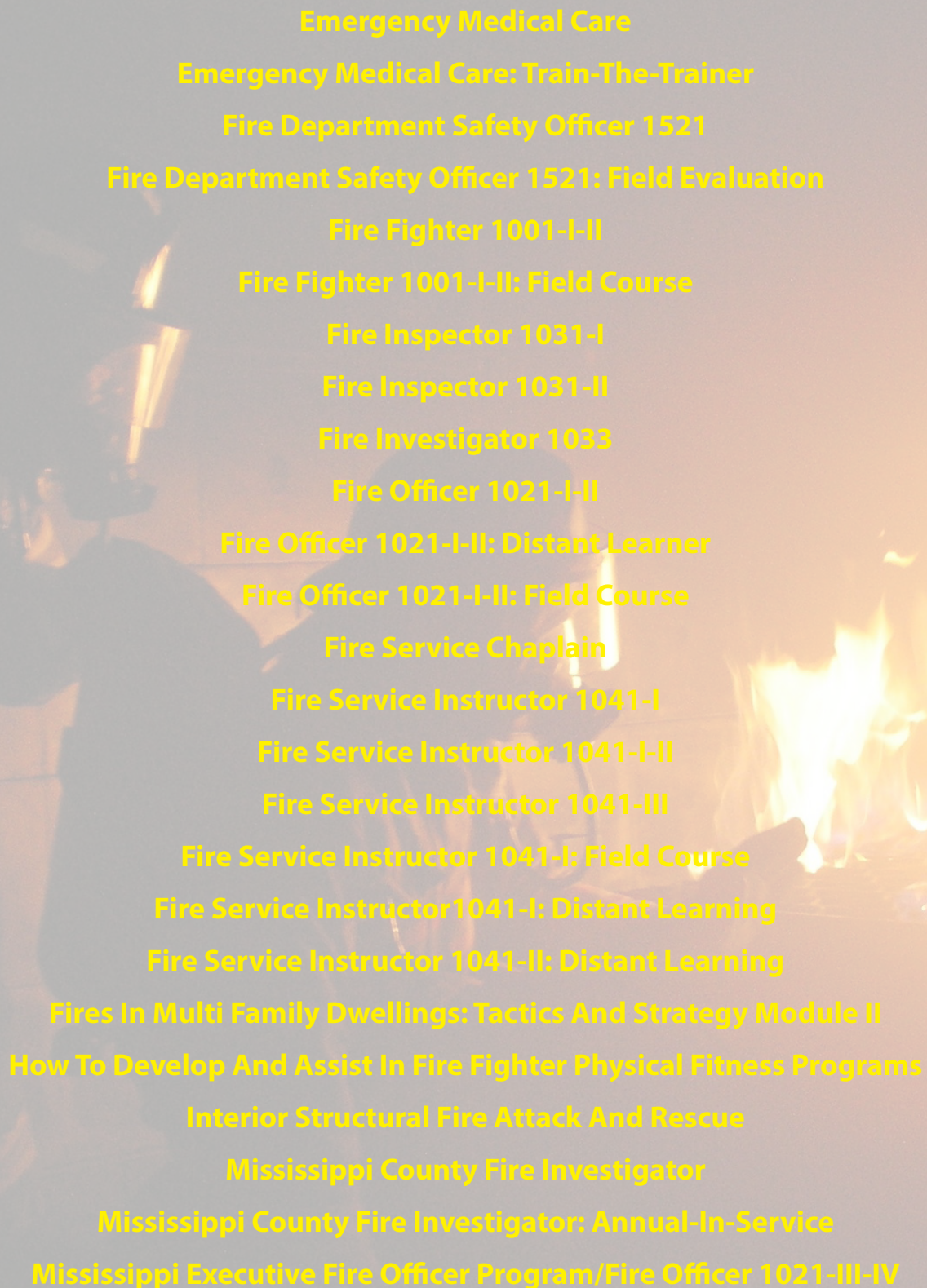


Students Trained by County of Sending Organization Fiscal Year 2014



CERTIFICATION SERVICES BUREAU

- Courses are designed to provide career, combination, and volunteer fire departments a wide range of programs that conform to National Fire Protection Association (NFPA) standards.
- Most courses have obtained International Fire Service Accreditation Congress (IFSAC) and National Board on Fire Service Professional Qualifications (PROBOARD) accreditation.
- Course deliveries consist of campus, field, contract programs, and distant learning programs.

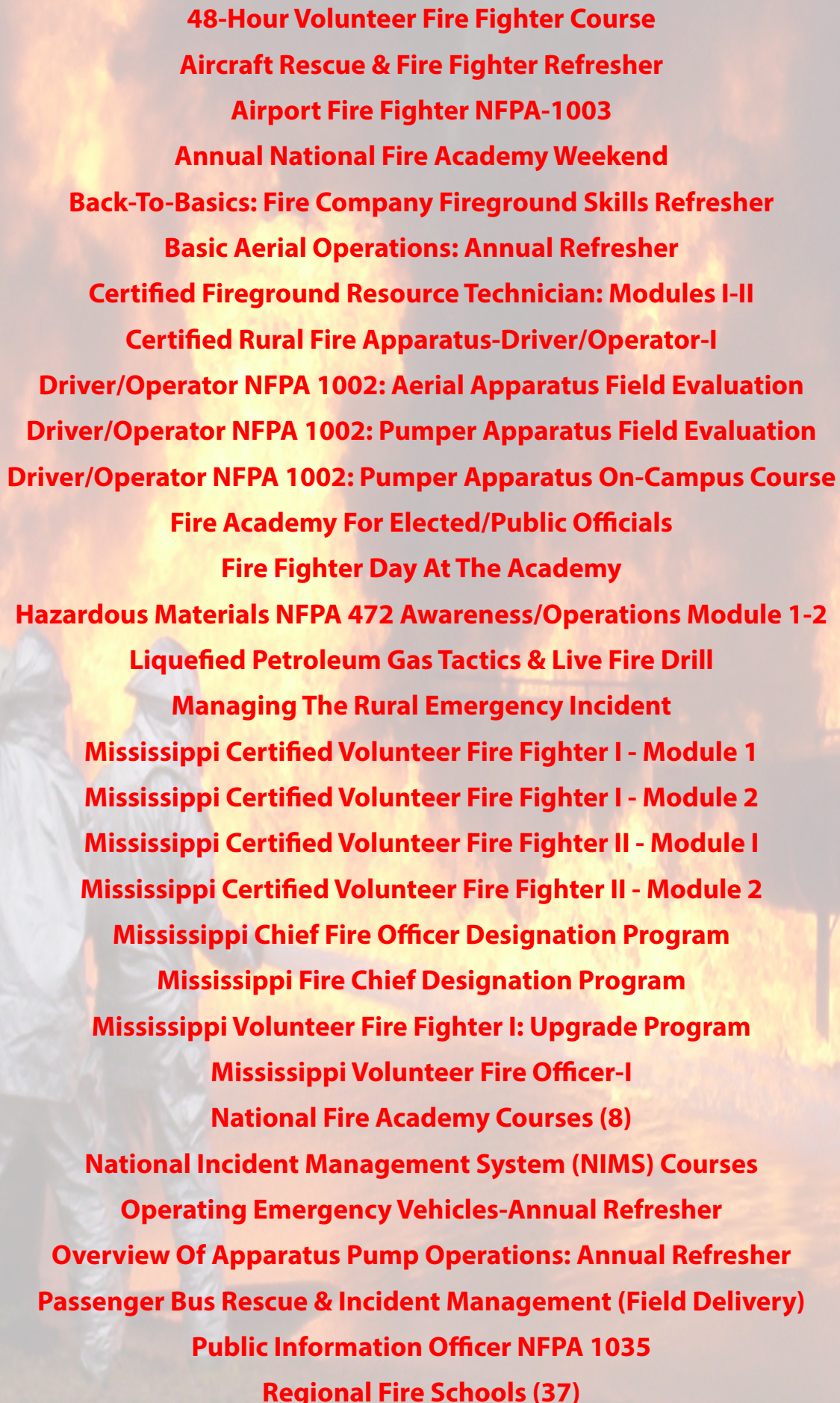


Emergency Medical Care
Emergency Medical Care: Train-The-Trainer
Fire Department Safety Officer 1521
Fire Department Safety Officer 1521: Field Evaluation
Fire Fighter 1001-I-II
Fire Fighter 1001-I-II: Field Course
Fire Inspector 1031-I
Fire Inspector 1031-II
Fire Investigator 1033
Fire Officer 1021-I-II
Fire Officer 1021-I-II: Distant Learner
Fire Officer 1021-I-II: Field Course
Fire Service Chaplain
Fire Service Instructor 1041-I
Fire Service Instructor 1041-I-II
Fire Service Instructor 1041-III
Fire Service Instructor 1041-I: Field Course
Fire Service Instructor 1041-I: Distant Learning
Fire Service Instructor 1041-II: Distant Learning
Fires In Multi Family Dwellings: Tactics And Strategy Module II
How To Develop And Assist In Fire Fighter Physical Fitness Programs
Interior Structural Fire Attack And Rescue
Mississippi County Fire Investigator
Mississippi County Fire Investigator: Annual-In-Service
Mississippi Executive Fire Officer Program/Fire Officer 1021-III-IV



EXTENSION SERVICES BUREAU

- Most courses are designed to be presented to the volunteer fire fighter.
- Utilizes a cadre' of adjunct instructors to present training programs across the state.
- Administers the National Fire Protection Association (NFPA) 1002 Driver/Operator and National Fire Protection Association (NFPA) 1003 Airport Fire Fighter which hold International Fire Service Accreditation Congress (IFSAC) and National Board on Fire Service Professional Qualifications (PROBOARD) Accreditation.
- Liaison between the Mississippi State Fire Academy and the National Fire Academy.



48-Hour Volunteer Fire Fighter Course
Aircraft Rescue & Fire Fighter Refresher
Airport Fire Fighter NFPA-1003
Annual National Fire Academy Weekend
Back-To-Basics: Fire Company Fireground Skills Refresher
Basic Aerial Operations: Annual Refresher
Certified Fireground Resource Technician: Modules I-II
Certified Rural Fire Apparatus-Driver/Operator-I
Driver/Operator NFPA 1002: Aerial Apparatus Field Evaluation
Driver/Operator NFPA 1002: Pumper Apparatus Field Evaluation
Driver/Operator NFPA 1002: Pumper Apparatus On-Campus Course
Fire Academy For Elected/Public Officials
Fire Fighter Day At The Academy
Hazardous Materials NFPA 472 Awareness/Operations Module 1-2
Liquefied Petroleum Gas Tactics & Live Fire Drill
Managing The Rural Emergency Incident
Mississippi Certified Volunteer Fire Fighter I - Module 1
Mississippi Certified Volunteer Fire Fighter I - Module 2
Mississippi Certified Volunteer Fire Fighter II - Module I
Mississippi Certified Volunteer Fire Fighter II - Module 2
Mississippi Chief Fire Officer Designation Program
Mississippi Fire Chief Designation Program
Mississippi Volunteer Fire Fighter I: Upgrade Program
Mississippi Volunteer Fire Officer-I
National Fire Academy Courses (8)
National Incident Management System (NIMS) Courses
Operating Emergency Vehicles-Annual Refresher
Overview Of Apparatus Pump Operations: Annual Refresher
Passenger Bus Rescue & Incident Management (Field Delivery)
Public Information Officer NFPA 1035
Regional Fire Schools (37)



SPECIAL/INDUSTRIAL SERVICES BUREAU

- Programs are generally formatted around the subject of industrial incipient firefighting, technical rescue, and hazardous materials response.
- Most courses have obtained International Fire Service Accreditation Congress (IFSAC) and National Board on Fire Service Professional Qualifications (PROBOARD) accreditation.
- Most special course student fees are supported with federal grant funds.
- Specializes in technical programs geared towards fire department training.
- Program delivery consists of on-campus and off-site programs.



Certified Advanced Rescue Specialist (CARS)

Confined Space Rescue

Confined Space Rescue: Modules 1-4

Emergency Response To Terrorism: Basic Concepts

Fire Service Management-101

Firefighter Intervention Rescue Survival Techniques (FIRST)

Fireground Leadership

Hazardous Materials Awareness And Operations NFPA 472

Hazardous Materials Technician Field Delivery NFPA 472

Hazardous Materials Technician-I NFPA 472

Hazardous Materials Technician-II NFPA 472

Incipient And Structural Fire Brigade Training Programs: Modules I-V

Industrial Fire Fighter Refresher Training

Industrial On-Site Training Programs

NFA Chemistry Of Hazardous Materials: Fire Chem I

Rescue Refresher

Rope Rescue I: Modules 1-4

Rope Rescue Level-I

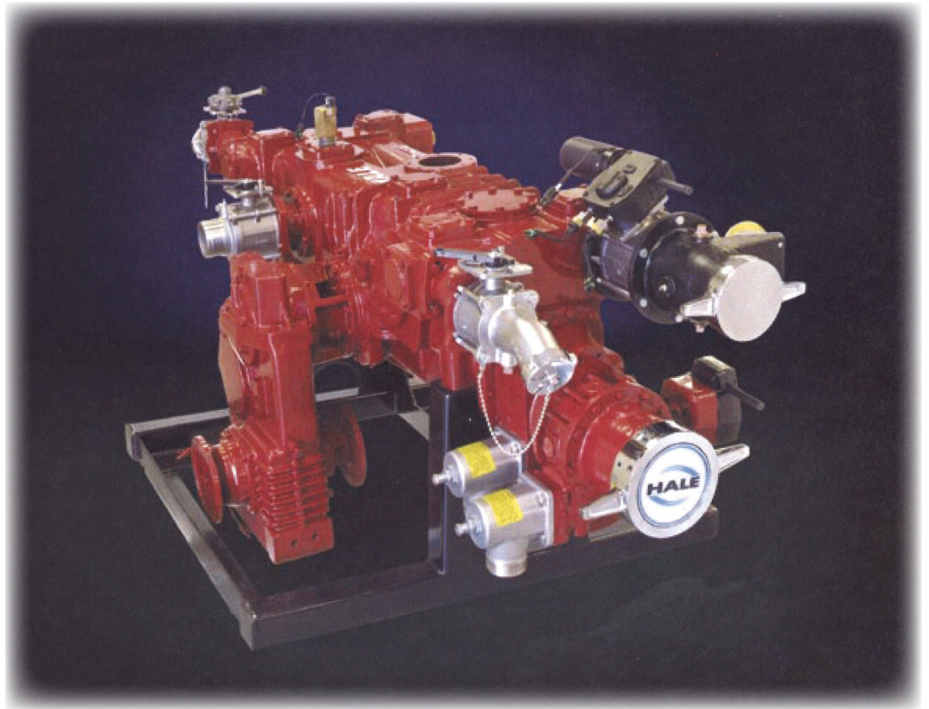
Rope Rescue Level-II

Smoke Diver

Trench Rescue & Emergency Shoring

OTHER EXTENSION SERVICES

Hale Fire Pump Rebuilding Class



Fire Apparatus Testing

CURRICULUM & TESTING/PUBLIC RELATIONS BUREAU

- The Curriculum/Testing Bureau handles all aspects of testing and accreditation for all of our certification programs. We currently have 23 levels of certification accredited by the International Fire Service Accreditation Congress (IFSAC) and 29 levels of certification accredited by the National Board on Fire Service Professional Qualifications (PROBOARD). The majority of our programs are dually accredited. All of our programs are based on National Fire Protection Association Standards.
- Administers the Candidate Physical Ability Test (CPAT) examination for the Mississippi Fire Personnel Minimum Standards and Certification Board (MSCB).
- Our facility is also available for public tours. Scheduled tours can be arranged for most types of educational, civic, and special groups. An age appropriate fire prevention/safety information program is delivered to each group along with a tour of the campus. There is no charge for the tours.





Adjunct Instructor Affiliations Fiscal Year 2014

The Academy contracted with the following individuals for course deliveries during the fiscal year.

Matt Bailey
Justin Boulter
Kelly Bozarth
Finley Brown
James Bunyard
Barry Burnside
Robert Bush
Austin Check
Lawrence Childs
Pierce Clark
Charles Collins
Michelle Crowley
Phillip Cummings
Byran Cunningham
Ronald Davis
Michael Devore
Juan Garza
Kendall Golden
Ginger Hand
Nicholas Hanetho
Kenneth Holbrook
Robert Hutto
Terry Johnson
Tom Lariviere

Turner Luttrell
Tommy Malone
Justin Miller
Craig Nash
Mark Nixon
Robert Parker
Clarence Parks
Marshall Robinson
John Russell
Michael Rutherford
Kerry Scott
Jason Sheldon
Jeffrey Sims
Darryl Smith
James Smith
Raleigh Sprouse
David Stanley
Joseph Stapleton
Adam Stone
Timothy Stuart
Karl VanHorn
Tommy Wardlaw
Michael Watts
David Webster



Organizational Affiliations

Much of the development and improvement of a successful training program comes as the direct result of dialogue established with other persons in the business. The members of the State Fire Academy staff are affiliated with many related organizations and thus have opportunities to share ideas. Following is a list of organizations staff members are involved in.

- ARFF (Aircraft Rescue and Fire Fighting) Working Group
- International Association of Arson Investigators
- International Association of Fire Chiefs
- International Code Council
- International Fire Service Accreditation Congress (IFSAC)
- Mississippi Administrative Assistants Emergency Services Association
- Mississippi Association of Governmental Purchasing and Property Agents
- Mississippi Association of Personnel Administrators
- Mississippi Association of Public Fire Safety Educators
- Mississippi Chapter of International Association of Arson Investigators
- Mississippi Fire Chiefs Association
- Mississippi Fire Fighters Association
- Mississippi Fire Service Instructors Association
- National Association of Arson Investigators
- National Fire Protection Association
- North American Fire Training Directors Association
- The ProBoard (National Professional Qualifications Board)



2014 PARTICIPATION REPORT BY TYPE OF PROGRAM

Certification Services Bureau

Course Name	Student Count
CPAT EXAM	257
EMERGENCY MEDICAL CARE	4
EMERGENCY MEDICAL CARE: TRAIN-THE-TRAINER	1
FIRE DEPARTMENT SAFETY OFFICER 1521	19
FIRE DEPARTMENT SAFETY OFFICER 1521 FIELD DELIVERY	28
FIRE FIGHTER 1001-I-II	148
FIRE FIGHTER 1001-I-II FIELD DELIVERY	32
FIRE INSPECTOR 1031-1	45
FIRE INVESTIGATOR 1033	66
FIRE INVESTIGATOR: IN-SERVICE	15
FIRE OFFICER 1021-1 DISTANT LEARNING	1
FIRE OFFICER 1021-1	15
FIRE OFFICER 1021-II DISTANT LEARNING	6
FIRE OFFICER 1021-I-II	47
FIRE OFFICER 1021-I-II FIELD DELIVERY	2
FIRE SERVICE CHAPLAIN	16
FIRE SERVICE INSTRUCTOR 1041-I	135
FIRE SERVICE INSTRUCTOR 1041-I FIELD DELIVERY	70
FIRE SERVICE INSTRUCTOR 1041-I DISTANT LEARNING	13
FIRE SERVICE INSTRUCTOR 1041-II FIELD DELIVERY	16
FIRE SERVICE INSTRUCTOR 1041-II DISTANT LEARNING	1
FIRE SERVICE INSTRUCTOR 1041-III	8
FIRES IN MULTI FAMILY DWELLINGS: TACTICS & STRATEGY	7
HAZ MAT NFPA 472 OPERATIONS W/PPE & PRODUCT CONTROL FIELD DELIVERY	32
HAZ MAT NFPA 472 OPERATIONS W/PPE & PRODUCT CONTROL	141
HOW TO DEVELOP/ASSIST IN FF PHYSICAL FITNESS PROGRAMS	11
IS 100: INTRODUCTION TO ICS	84
IS 200: ICS FOR SINGLE RESOURCE AND INITIAL ACTIONS	110
MISSISSIPPI COUNTY FIRE INVESTIGATOR: ANNUAL IN-SERVICE	65
PUBLIC INFORMATION OFFICER	16



2014 PARTICIPATION REPORT BY TYPE OF PROGRAM

Extension Services Bureau

Course Name	Student Count
10 COMMANDMENTS OF EFFECTIVE & SAFE FIREGROUND MANAGEMENT	21
48 HOUR VOLUNTEER FIRE FIGHTER	6
48 HOUR VOLUNTEER FIRE FIGHTER-MODULE 1	42
AIRCRAFT RESCUE FIRE FIGHTER REFRESHER TRAINING (3-HOUR)	168
AIRCRAFT RESCUE FIRE FIGHTER REFRESHER TRAINING (6-HOUR)	70
AIRPORT FIRE FIGHTER	38
AND THE BEAT GOES ON	34
APPARATUS OPERATIONS	22
APPARATUS PUMP OPERATIONS: ANNUAL REFRESHER	31
APPARATUS PUMP OPERATION-MODULE 2: MWS	217
APPARATUS PUMP OPERATION-MODULE 1: BASICS	249
AUTOMOBILE EXTRICATION	461
BASIC FIRE COMPANY FIREGROUND SKILLS REFRESHER (4-HOUR)	17
BASIC FIRE COMPANY FIREGROUND SKILLS REFRESHER (8-HOUR)	21
BASIC RESCUE OPERATIONS	73
CALLING THE MAYDAY I	198
CALLING THE MAYDAY II	178
CERTIFIED FIREGROUND RESOURCE TECHNICIAN	26
CERTIFIED FIREGROUND RESOURCE TECHNICIAN-MODULE 1	50
CERTIFIED RURAL FIRE APPARATUS-DRIVER/OPERATOR-I	37
DRIVER/OPERATOR NFPA 1002: AERIAL APPARATUS	21
DRIVER/OPERATOR NFPA 1002: PUMPER APPARATUS	61
DRIVER/OPERATOR NFPA 1002: PUMPER APPARATUS FIELD DELIVERY	78
DUST EXPLOSIONS	85
ELECTRICAL HAZARDS ON THE EMERGENCY SCENE	204
EMS OPERATIONS	92
ENGINE COMPANY OPERATIONS - PART 1	91
EVERYDAY FIRE	100
EXCELLENT CUSTOMER SERVICE	25
FIRE ACADEMY FOR ELECTED/PUBLIC OFFICIALS	42
FIRE APPARATUS TESTING	8
FIRE FIGHTER DAY AT THE ACADEMY	38
FIRE FIGHTER ESSENTIAL SKILLS - I	183
FIRE FIGHTER ESSENTIAL SKILLS - II	79
FIRE FIGHTER SELF RESCUE	224
FIRE SERVICE ETHICS	80
FIRE SERVICE RESCUE 101	45
FIREGROUND SUPPORT OPERATIONS	52
HALE PUMP	20
HAZ MAT NFPA 472 OPERATIONS W/PPE & PRODUCT CONTROL	24
HAZ MAT NFPA 472 OPERATIONS W/PPE & PRODUCT CONTROL: MODULE 1	28
HAZARDOUS MATERIALS AWARENESS/OPERATIONS-MODULE 1	35
HAZARDOUS MATERIALS: INITIAL RESPONSE	125



2014 PARTICIPATION REPORT BY TYPE OF PROGRAM

Extension Services Bureau (Cont.)

Course Name	Student Count
INCIDENT SAFETY OFFICER	13
INCIDENT SAFETY OFFICER: TRAIN-THE-TRAINER	8
INTRO TO STRUCTURAL FIRE ATTACK & RESCUE FOR 911 PERSONNEL	6
IS 100: INTRODUCTION TO ICS	28
IS 200: ICS FOR SINGLE RESOURCE AND INITIAL ACTIONS	28
LEGAL ISSUES MINIMIZING EXPOSURE	60
LP-GAS TACTICS & LIVE FIRE DRILL	279
MANAGING THE RURAL EMERGENCY & PERSONAL ACCOUNTABILITY	34
MARKETING FIRE PREVENTION IN YOUR COMMUNITY	21
MISSISSIPPI CERTIFIED VOLUNTEER FIRE FIGHTER [NFPA 1001-BASED]	15
MISSISSIPPI CERTIFIED VOLUNTEER FIRE FIGHTER I	273
MISSISSIPPI CERTIFIED VOLUNTEER FIRE FIGHTER II	128
MISSISSIPPI CERTIFIED VOLUNTEER FIRE FIGHTER I & II	1
MISSISSIPPI CERTIFIED VOLUNTEER FIRE FIGHTER II MODULE I	183
MISSISSIPPI FIRE FIGHTER SAFETY 2004	202
MISSISSIPPI FIRE FIGHTER SAFETY 2006	53
MISSISSIPPI FIRE FIGHTER SAFETY 2012	11
MISSISSIPPI VOLUNTEER FIRE FIGHTER 1: UP-GRADE	78
MISSISSIPPI VOLUNTEER FIRE FIGHTER 1: UP-GRADE-MODULE 1	36
MISSISSIPPI VOLUNTEER FIRE FIGHTER 1: UP-GRADE-MODULE 2	17
MISSISSIPPI VOLUNTEER FIRE FIGHTER 1-MODULE 1 CLASSROOM	466
MISSISSIPPI VOLUNTEER FIRE FIGHTER 1-MODULE 1: ORAL TEST	5
MISSISSIPPI VOLUNTEER FIRE OFFICER-I	41
MS FIRE PREVENTION AND PUBLIC FIRE SAFETY EDUCATION	14
MS TRAINING CHIEFS CONFERENCE 2013	72
NATIONAL INCIDENT MANAGEMENT SYSTEM-INTRODUCTION	24
NATURAL GAS RESPONSE CONSIDERATIONS FOR FIRE DEPARTMENT	65
NIMS ICS-300 (INTERMEDIATE ICS)	92
NIMS ICS 400 (ADVANCED ICS)	51
NIMS ICS-800: NATIONAL RESPONSE FRAMEWORK-INTRODUCTION	1
NIMS ICS-800: NATIONAL RESPONSE PLAN-INTRODUCTION	14
OPERATING EMERGENCY VEHICLES-ANNUAL REFRESHER	107
OVERVIEW OF APPARATUS PUMP OPERATIONS	40
PASSENGER BUS RESCUE & INCIDENT MANAGEMENT	25
PERSONNEL ACCOUNTABILITY: TWO-IN/TWO-OUT RULE	145
POLITICS AND THE WHITE HELMET	33
POST AIRCRAFT ACCIDENT RESPONSE TRAINING	122
RAPID INTERVENTION TEAMS	401
RESIDENTIAL SPRINKLER PLAN REVIEW	22
RESPONDING TO FIRE/RESCUE INCIDENTS: 911 PERSONNEL	57
RESPONSE TO NEW VEHICLE FIRES	257
STAFF DEVELOPMENT - STAFF IN-SERVICE	8
STRATEGIES FOR COMPANY (GROUP) SUCCESS	8



2014 PARTICIPATION REPORT BY TYPE OF PROGRAM

Extension Services Bureau (Cont.)

Course Name	Student Count
STRATEGIES FOR FIRE FIGHTER PERSONAL SUCCESS	23
STRUCTURAL FIRE ATTACK	105
SWIM WITH "SHARKS" & SURVIVE	75
THE FIRE APPARATUS DRIVER	296
TRAFFIC INCIDENT MANAGEMENT: TRAIN-THE-TRAINER	37
TRAINING OPERATIONS IN SMALL DEPARTMENTS	9
TRAINING, RESPONDING AND RETURNING HOME ALIVE	18
UNDERSTANDING THE ROLE OF THE INCIDENT SAFETY OFFICER	26
USING BODY PARTS TO MAKE EFFECTIVE LEADERSHIP DECISIONS	75
VOLUNTEER FIRE FIGHTER - MODULE 1 - 2ND ATTEMPT	16
VOLUNTEER FIRE FIGHTER INSTRUCTOR ORIENTATION	46



2014 PARTICIPATION REPORT BY TYPE OF PROGRAM

Industrial Services Bureau

Course Name	Student Count
CHLORINE RESPONSE TRAINING	140
EMERGENCY RESPONSE TRAINING	42
HAZ MAT AWARENESS TRAINING	10
HAZ MAT OPERATIONAL TRAINING	10
HAZ MAT TECHNICIAN TRAINING	14
INCIDENT COMMAND SYSTEM	10
INDUSTRIAL EMERGENCY RESPONSE TRAINING	11
INDUSTRIAL REFRESHER FIRE FIGHTER TRAINING (8-HOUR)	190
INDUSTRIAL REFRESHER FIRE FIGHTER TRAINING (16-HOUR)	32
INDUSTRIAL REFRESHER FIRE FIGHTER TRAINING (24-HOUR)	99
INDUSTRIAL REFRESHER FIRE FIGHTER TRAINING (30-HOUR)	21
INDUSTRIAL REFRESHER FIRE FIGHTER TRAINING (32-HOUR)	40
INDUSTRIAL REFRESHER FIRE FIGHTER TRAINING (40-HOUR)	60
INDUSTRIAL RESCUE REFRESHER (16-HOUR)	17
INDUSTRIAL RESCUE REFRESHER (24-HOUR)	24
INDUSTRIAL RESCUE TRAINING	13
RESCUE REFRESHER	11



2014 PARTICIPATION REPORT BY TYPE OF PROGRAM

Special Services Bureau

Course Name	Student Count
CHLORINE/COMMUNICATIONS WITH THE MEDIA	68
CONFINED SPACE RESCUE MODULE 1	73
CONFINED SPACE RESCUE MODULE 2	73
CONFINED SPACE RESCUE MODULE 3	73
CONFINED SPACE RESCUE MODULE 4	73
CONFINED SPACE RESCUE TECHNICIAN	74
DECONTAMINATION/CHEMICAL PROTECTIVE CLOTHING	68
EMERGENCY RESPONSE TO TERRORISM: BASIC CONCEPTS	11
FIRE SERVICE MANAGEMENT 101	24
FIREFIGHTER INTERVENTION RESCUE SURVIVAL TECHNIQUES	63
FIREGROUND LEADERSHIP	39
HAZARDOUS MATERIALS AWARENESS AND OPERATIONS	8
HAZARDOUS MATERIALS FOR FIRST RESPONDERS	31
HAZARDOUS MATERIALS TECHNICIAN	68
HAZARDOUS MATERIALS TECHNICIAN - I	94
HAZARDOUS MATERIALS TECHNICIAN-II	40
NON-BULK CONTAINERS/HIGHWAY CARRIERS/RAIL CARS	68
REFRESHER HAZ MAT TRAINING	61
RESPONDING TO HAZARDOUS MATERIALS INCIDENTS	68
ROPE RESCUE I - MODULE 1	173
ROPE RESCUE I - MODULE 2	165
ROPE RESCUE I - MODULE 3	165
ROPE RESCUE I - MODULE 4	165
ROPE RESCUE II	47
ROPE RESCUE II-FIELD DELIVERY	22
ROPE RESCUE TECHNICIAN - I	39
SMOKE DIVER	53
SOURCES OF ASSISTANCE/HAZ MAT ICS/CHEM. TERMS & DEFINITIONS	69
TOXICOLOGY/MONITORING DEVICES/WEAPONS OF MASS DESTRUCTION	68
TRENCH RESCUE AND EMERGENCY SHORING TECHNICIAN	76
VEHICLE EXTRICATION I & II	19



2014 PARTICIPATION REPORT BY ORGANIZATION

Organization Name	Student Count
47TH CIVIL SUPPORT TEAM	1
ABERDEEN FIRE DEPARTMENT	3
ACKERMAN FIRE DEPARTMENT	16
ACONA VOLUNTEER FIRE DEPARTMENT	6
ADAMS COUNTY EMERGENCY MANAGEMENT	5
ADAMS COUNTY FIRE COORDINATOR	2
ADAMS COUNTY SHERIFF'S DEPARTMENT	1
ADATON/SELF CREEK FIRE DEPARTMENT	5
AGRICOLA VOLUNTEER FIRE DEPARTMENT	2
AKZO NOBEL	20
ALCORN COUNTY EMA	7
ALCORN COUNTY SHERIFF'S DEPARTMENT	1
ALCORN STATE UNIVERSITY	4
ALGOMA VOLUNTEER FIRE DEPARTMENT	6
ALLEN VOLUNTEER FIRE DEPARTMENT	19
ALPHABA/COCKRUM/INGRAMS FIRE DEPARTMENT	15
AMORY FIRE DEPARTMENT	50
AMR - HINDS COUNTY	1
ANGUILLA VOLUNTEER FIRE DEPARTMENT	3
ARCOLA VOLUNTEER FIRE DEPARTMENT	9
ARKABUTLA VOLUNTEER FIRE DEPARTMENT	1
ARKEMA	1
ARLINGTON VOLUNTEER FIRE DEPARTMENT/NESHOPA COUNTY	4
ASHLAND VOLUNTEER FIRE DEPARTMENT	19
ATTALA COUNTY CENTRAL FIRE DEPARTMENT	100
AUSTIN TEXAS FIRE DEPARTMENT	1
BAILEY VOLUNTEER FIRE DEPARTMENT	9
BANNER VOLUNTEER FIRE DEPARTMENT/CALHOUN COUNTY	5
BANNER/BOUNDS VOLUNTEER FIRE DEPARTMENT/ITAWAMBA COUNTY	5
BARTAHATCHIE VOLUNTEER FIRE DEPARTMENT	1
BARTON VOLUNTEER FIRE DEPARTMENT/MARSHALL COUNTY	10
BASIN VOLUNTEER FIRE DEPARTMENT	1
BASSFIELD VOLUNTEER FIRE DEPARTMENT	28
BATESVILLE FIRE DEPARTMENT	38
BAY SPRINGS VOLUNTEER FIRE DEPARTMENT	31
BAY ST. LOUIS FIRE DEPARTMENT	5
BAYSIDE PARK VOLUNTEER FIRE DEPARTMENT	25
BEAUMONT VOLUNTEER FIRE DEPARTMENT	1
BEAVER LAKE VOLUNTEER FIRE DEPARTMENT	22
BEAVER MEADOWS VOLUNTEER FIRE DEPARTMENT	15
BEAVERDAM VOLUNTEER FIRE DEPARTMENT	6
BECKER-ATHENS VOLUNTEER FIRE DEPARTMENT	3
BECKHAM VOLUNTEER FIRE DEPARTMENT	3



2014 PARTICIPATION REPORT BY ORGANIZATION (Cont.)

Organization Name	Student Count
BELL SCHOOL HOUSE FIRE DEPARTMENT	2
BELMONT FIRE DEPARTMENT	2
BELZONI FIRE DEPARTMENT	75
BENNDALE VOLUNTEER FIRE DEPARTMENT	5
BENTON COUNTY SHERIFF'S DEPARTMENT	1
BENTON VOLUNTEER FIRE DEPARTMENT	5
BENTONIA VOLUNTEER FIRE DEPARTMENT	1
BETHEDEN VOLUNTEER FIRE DEPARTMENT	3
BETHEL VOLUNTEER FIRE DEPARTMENT	9
BEULAH HUBBARD VOLUNTEER FIRE DEPARTMENT/NEWTON COUNTY	22
BEXLEY VOLUNTEER FIRE DEPARTMENT	21
BIG LEVEL VOLUNTEER FIRE DEPARTMENT	12
BIGGERSVILLE VOLUNTEER FIRE DEPARTMENT	2
BILOXI FIRE DEPARTMENT	95
BILOXI POLICE DEPARTMENT	2
BLYTHEVILLE FIRE DEPARTMENT	16
BOGGY VOLUNTEER FIRE DEPARTMENT	1
BOGUE CHITTO VOLUNTEER FIRE DEPARTMENT	2
BOLIVAR COUNTY FIRE DEPARTMENT	14
BOLTON VOLUNTEER FIRE DEPARTMENT	24
BOONEVILLE FIRE DEPARTMENT	18
BOONEVILLE POLICE DEPARTMENT	31
BOVINA VOLUNTEER FIRE DEPARTMENT	6
BRANDON FIRE DEPARTMENT	23
BRAXTON VOLUNTEER FIRE DEPARTMENT	47
BRIDGETOWN VOLUNTEER FIRE DEPARTMENT	3
BROOKHAVEN FIRE DEPARTMENT	53
BROOKLYN VOLUNTEER FIRE DEPARTMENT	10
BROOKSVILLE VOLUNTEER FIRE DEPARTMENT	9
BROOME VOLUNTEER FIRE DEPARTMENT	3
BROWNSVILLE VOLUNTEER FIRE DEPARTMENT	19
BRUCE VOLUNTEER FIRE DEPARTMENT	17
BUCATUNNA FIRE DEPARTMENT/WAYNE COUNTY	1
BUDE VOLUNTEER FIRE DEPARTMENT	4
BUFFALO VOLUNTEER FIRE DEPARTMENT	4
BUNKOM HILL/NEW HOPE VOLUNTEER FIRE DEPARTMENT	1
BYHALIA VOLUNTEER FIRE DEPARTMENT	15
BYNUM VOLUNTEER FIRE DEPARTMENT	25
BYRAM FIRE DEPARTMENT	17
BYRAM VOLUNTEER FIRE DEPARTMENT	22
BYWY VOLUNTEER FIRE DEPARTMENT/CHOCTAW COUNTY	6
CAIRO VOLUNTEER FIRE DEPARTMENT	1
CALHOUN CITY VOLUNTEER FIRE DEPARTMENT	4



2014 PARTICIPATION REPORT BY ORGANIZATION (Cont.)

Organization Name	Student Count
CALHOUN COUNTY FIRE COORDINATOR	1
CALHOUN COUNTY SHERIFF'S DEPARTMENT	1
CALHOUN VOLUNTEER FIRE DEPARTMENT	3
CAMDEN FIRE & RESCUE	2
CANNONSBURG/CHURCH HILL VOLUNTEER FIRE DEPARTMENT	10
CANTON FIRE DEPARTMENT	35
CARMACK FIRE DEPARTMENT/ATTALA COUNTY BEAT 3	1
CARMICHAEL VOLUNTEER FIRE DEPARTMENT	2
CARNES VOLUNTEER FIRE DEPARTMENT	32
CARRIERE VOLUNTEER FIRE DEPARTMENT	10
CARROLL COUNTY SHERIFF'S DEPARTMENT	1
CARTHAGE FIRE DEPARTMENT	22
CASCILLA VOLUNTEER FIRE DEPARTMENT	7
CASON VOLUNTEER FIRE DEPARTMENT	7
CATO VOLUNTEER FIRE DEPARTMENT	5
CAYCE VOLUNTEER FIRE DEPARTMENT	7
CEDAR CREEK VOLUNTEER FIRE DEPARTMENT	19
CENTER RIDGE VOLUNTEER FIRE DEPARTMENT	10
CENTER VOLUNTEER FIRE DEPARTMENT/UNION COUNTY	1
CENTRAL CLAY COUNTY/#600 FIRE DEPARTMENT	14
CENTRAL GEORGE COUNTY VOLUNTEER FIRE DEPARTMENT	3
CENTRAL JASPER COUNTY VOLUNTEER FIRE DEPARTMENT	23
CENTRAL LAMAR COUNTY FIRE DEPARTMENT	6
CENTRAL MS CORRECTIONAL FACILITY	19
CENTRAL OKTIBBEHA /LONGVIEW FIRE DEPARTMENT	13
CENTREVILLE VOLUNTEER FIRE DEPARTMENT	7
CHARLESTON VOLUNTEER FIRE DEPARTMENT	24
CHICKEN BONE FIRE DEPARTMENT	8
CHLORINE INSTITUTE	140
CHOCTAW COUNTY FIRE COORDINATOR	1
CHOCTAW FIRE DEPARTMENT	44
CLAIBORNE COUNTY FIRE DEPARTMENT	26
CLAIBORNE COUNTY SHERIFF'S DEPARTMENT	3
CLARA FIRE DEPARTMENT/WAYNE COUNTY	5
CLARKDALE VOLUNTEER FIRE DEPARTMENT	22
CLARKE COUNTY EMA	8
CLARKE COUNTY FIRE COORDINATOR	1
CLARKE COUNTY FIRE SERVICE	14
CLARKE COUNTY SHERIFF'S DEPARTMENT	1
CLARKEDALE VOLUNTEER FIRE DEPARTMENT	1
CLARKSDALE FIRE DEPARTMENT	74
CLARKSON/FAME VOLUNTEER FIRE DEPARTMENT	3
CLAY COUNTY 911	1



2014 PARTICIPATION REPORT BY ORGANIZATION (Cont.)

Organization Name	Student Count
CLAY COUNTY SHERIFF'S DEPARTMENT	3
CLEAR SPRINGS VOLUNTEER FIRE DEPARTMENT	1
CLEARY VOLUNTEER FIRE DEPARTMENT	5
CLERMONT HARBOR VOLUNTEER FIRE DEPARTMENT	4
CLEVELAND FIRE DEPARTMENT	25
CLINTON FIRE DEPARTMENT	25
COAHOMA COUNTY FIRE DEPARTMENT	26
COAHOMA COUNTY SHERIFF'S DEPARTMENT	2
COFFEEVILLE VOLUNTEER FIRE DEPARTMENT	2
COLDWATER VOLUNTEER FIRE DEPARTMENT	12
COLES POINT VOLUNTEER FIRE DEPARTMENT	18
COLLINS FIRE DEPARTMENT	23
COLUMBIA FIRE DEPARTMENT	56
COLUMBUS FIRE DEPARTMENT	169
COLUMBUS POLICE DEPARTMENT	1
COMBAT READINESS TRAINING CENTER FIRE DEPARTMENT	13
COMO VOLUNTEER FIRE DEPARTMENT	1
COPIAH COUNTY EMERGENCY MANAGEMENT	3
COPIAH COUNTY FIRE COORDINATOR	4
COPIAH COUNTY SHERIFF'S DEPARTMENT	1
CORINTH FIRE DEPARTMENT	151
COUNTY LINE VOLUNTEER FIRE DEPARTMENT	13
COURTLAND VOLUNTEER FIRE DEPARTMENT	14
CRENSHAW VOLUNTEER FIRE DEPARTMENT	6
CROSSROADS VOLUNTEER FIRE DEPARTMENT/HINDS COUNTY	2
CRYSTAL SPRINGS FIRE DEPARTMENT	9
CUEVAS VOLUNTEER FIRE DEPARTMENT	3
CULKIN VOLUNTEER FIRE DEPARTMENT	61
CUMBERLAND VOLUNTEER FIRE DEPARTMENT	1
CURTIS-LOCKE VOLUNTEER FIRE DEPARTMENT	3
DAMASCUS FIRE DEPARTMENT	5
DEKALB VOLUNTEER FIRE DEPARTMENT	8
DENHAM VOLUNTEER FIRE DEPARTMENT/WAYNE COUNTY	1
DENNIS VOLUNTEER FIRE DEPARTMENT	2
DEPARTMENT OF INSURANCE	1
DERBY-WHITESANDS VOLUNTEER FIRE DEPARTMENT	6
DERMA VOLUNTEER FIRE DEPARTMENT	4
DESOTO COUNTY EMERGENCY SERVICES	4
DESOTO COUNTY SHERIFF'S DEPARTMENT	10
DESOTO VOLUNTEER FIRE DEPARTMENT/CLARKE COUNTY	3
DIAMONDHEAD FIRE DEPARTMENT	15
D'IBERVILLE FIRE DEPARTMENT	32
DISTRICT 3 VOLUNTEER FIRE DEPARTMENT LOWNDES COUNTY	6



2014 PARTICIPATION REPORT BY ORGANIZATION (Cont.)

Organization Name	Student Count
DIXIE VOLUNTEER FIRE DEPARTMENT	14
DIXON VOLUNTEER FIRE DEPARTMENT	14
DODGE CITY KANSAS FIRE DEPARTMENT	3
DORSEY/FRIENDSHIP FIRE DEPARTMENT	14
DOTHAN REGIONAL AIRPORT FIRE DEPARTMENT	6
DREW VOLUNTEER FIRE DEPARTMENT	1
DUCK HILL VOLUNTEER FIRE DEPARTMENT	18
DUFFEE VOLUNTEER FIRE DEPARTMENT	2
DUMAS VOLUNTEER FIRE DEPARTMENT	4
DUPONT SPECIALTY CHEMICALS	83
DURANT VOLUNTEER FIRE DEPARTMENT	5
E. CENTRAL/E. FORK FIRE DEPARTMENT	2
E. COVINGTON VOLUNTEER FIRE DEPARTMENT	3
E. FRANKLIN RURAL FIRE DEPARTMENT	1
E. LINCOLN VOLUNTEER FIRE DEPARTMENT	2
E. OKTIBBEHA COUNTY FIRE DEPARTMENT	41
E. QUITMAN VOLUNTEER FIRE DEPARTMENT	3
E. UNION VOLUNTEER FIRE DEPARTMENT	5
E. WINSTON COUNTY VOLUNTEER FIRE DEPARTMENT	3
EAGLE LAKE VOLUNTEER FIRE DEPARTMENT	30
ECRU VOLUNTEER FIRE DEPARTMENT	4
EDINBURG VOLUNTEER FIRE DEPARTMENT	3
ELLIOTT VOLUNTEER FIRE DEPARTMENT	9
ELLISVILLE FIRE DEPARTMENT	17
ENID VOLUNTEER FIRE DEPARTMENT	5
ENON VOLUNTEER FIRE DEPARTMENT	14
ENTERPRISE VOLUNTEER FIRE DEPARTMENT	2
ERGON REFINING, INC.	73
ESCATAWPA VOLUNTEER FIRE DEPARTMENT	3
ESCATAWPA UTILITY DISTRICT FIRE DEPARTMENT	3
EUDORA VOLUNTEER FIRE DEPARTMENT	16
EUPORA VOLUNTEER FIRE DEPARTMENT	7
EVERGREEN FIRE PROTECTION DISTRICT	17
EVERGREEN-CAROLINA VOLUNTEER FIRE DEPARTMENT	7
EXXON-BATON ROUGE REFINERY	30
EXXON-BAYTOWN, TX REFINERY/CHEMICAL PLANT	40
EXXONMOBIL-BTEC	1
FAIRHAVEN VOLUNTEER FIRE DEPARTMENT	18
FAIRVIEW VOLUNTEER FIRE DEPARTMENT	9
FALKNER VOLUNTEER FIRE DEPARTMENT	20
FARMHAVEN VOLUNTEER FIRE DEPARTMENT	2
FARMINGTON VOLUNTEER FIRE DEPARTMENT	14
FAYETTE VOLUNTEER FIRE DEPARTMENT	2



2014 PARTICIPATION REPORT BY ORGANIZATION (Cont.)

Organization Name	Student Count
FELLOWSHIP VOLUNTEER FIRE DEPARTMENT	14
FENTON VOLUNTEER FIRE DEPARTMENT	14
FERNWOOD VOLUNTEER FIRE DEPARTMENT	4
FIREFOX/HINDS COUNTY PENAL FARM	51
FIRST CHEMICAL CORPORATION	50
FISHER FERRY VOLUNTEER FIRE DEPARTMENT	35
FLORA FIRE DEPARTMENT	1
FLORENCE VOLUNTEER FIRE DEPARTMENT	3
FLOWOOD FIRE DEPARTMENT	226
FLOWOOD POLICE DEPARTMENT	29
FONTAINEBLEAU VOLUNTEER FIRE DEPARTMENT	2
FOREST FIRE DEPARTMENT	2
FORT BAYOU VOLUNTEER FIRE DEPARTMENT	12
FORTS LAKE/FRANKLIN CREEK VOLUNTEER FIRE DEPARTMENT	6
FOSTER MOUND VOLUNTEER FIRE DEPARTMENT	16
FOXWORTH VOLUNTEER FIRE DEPARTMENT	6
FRANKLIN COUNTY DISTRICT 5 / VOLUNTEER FIRE DEPARTMENT	11
FRANKLIN COUNTY SHERIFF'S DEPARTMENT	1
FRENCH CAMP VOLUNTEER FIRE DEPARTMENT	8
FRIENDSHIP VOLUNTEER FIRE DEPARTMENT	3
FULTON FIRE DEPARTMENT	18
GAUTIER FIRE DEPARTMENT	28
GEESLIN CORNER VOLUNTEER FIRE DEPARTMENT	7
GEORGETOWN VOLUNTEER FIRE DEPARTMENT	6
GILLSBURG VOLUNTEER FIRE DEPARTMENT	5
GLADE VOLUNTEER FIRE DEPARTMENT	25
GLEN VOLUNTEER FIRE DEPARTMENT	2
GLENDORA VOLUNTEER FIRE DEPARTMENT	1
GLOSTER FIRE DEPARTMENT/AMITE COUNTY	2
GLOSTER VOLUNTEER FIRE DEPARTMENT/AMITE COUNTY	3
GLUCKSTADT FIRE PROTECTION DISTRICT	49
GOLDEN TRIANGLE REGIONAL AIRPORT/BAPTIST MEM.	2
GOLDEN VOLUNTEER FIRE DEPARTMENT	2
GONZALES LA FIRE DEPARTMENT	21
GORE SPRINGS VOLUNTEER FIRE DEPARTMENT	13
GRACE VOLUNTEER FIRE DEPARTMENT	2
GRANBY VOLUNTEER FIRE DEPARTMENT	8
GRAND GULF NUCLEAR STATION	112
GRAVEL HILL VOLUNTEER FIRE DEPARTMENT	3
GREENE COUNTY SHERIFF'S DEPARTMENT	4
GREENFIELD FIRE DEPARTMENT	2
GREENFIELD VOLUNTEER FIRE DEPARTMENT	4
GREENLEAF VOLUNTEER FIRE DEPARTMENT	1



2014 PARTICIPATION REPORT BY ORGANIZATION (Cont.)

Organization Name	Student Count
GREENVILLE FIRE DEPARTMENT	161
GREENVILLE MID-DELTA AIRPORT	7
GREENWOOD FIRE DEPARTMENT	144
GRENADA FIRE DEPARTMENT	21
GULF PARK ESTATES/ST. ANDREWS FIRE DISTRICT	8
GULFPORT CITY OF	2
GULFPORT FIRE DEPARTMENT	211
HAMILTON VOLUNTEER FIRE DEPARTMENT/MONROE CTY	9
HANCOCK COUNTY EMERGENCY MANAGEMENT	4
HANCOCK COUNTY SHERIFF'S DEPARTMENT	1
HARMONY VOLUNTEER FIRE DEPARTMENT	11
HARMONY/CENTRAL VOLUNTEER FIRE DEPARTMENT	2
HARRISON COUNTY FIRE SERVICE	105
HARRISON COUNTY SHERIFF'S DEPARTMENT	5
HARRISVILLE VOLUNTEER FIRE DEPARTMENT	6
HATLEY VOLUNTEER FIRE DEPARTMENT	22
HATTIESBURG FIRE DEPARTMENT	122
HATTIESBURG/LAUREL REGIONAL AIRPORT AUTHORITY	4
HAZLEHURST FIRE DEPARTMENT	27
HAZLEHURST VOLUNTEER FIRE DEPARTMENT	2
HEBRON VOLUNTEER FIRE DEPARTMENT	1
HEIDELBERG VOLUNTEER FIRE DEPARTMENT	13
HERNANDO FIRE DEPARTMENT	32
HICKORY FLAT VOLUNTEER FIRE DEPARTMENT	2
HICKORY GROVE VOLUNTEER FIRE DEPARTMENT	1
HICKORY GROVE VOLUNTEER FIRE DEPARTMENT/LAMAR COUNTY	1
HICKORY VOLUNTEER FIRE DEPARTMENT/NEWTON COUNTY	8
HIGH POINT VOLUNTEER FIRE DEPARTMENT	7
HILLSBORO VOLUNTEER FIRE DEPARTMENT	4
HINDS COUNTY EMERGENCY MANAGEMENT	9
HOG CHAIN VOLUNTEER FIRE DEPARTMENT	15
HOLCOMB VOLUNTEER FIRE DEPARTMENT	3
HOLLANDALE VOLUNTEER FIRE DEPARTMENT	23
HOLLY SPRINGS FIRE DEPARTMENT	59
HOLMES COUNTY E-911	2
HOLMES COUNTY SHERIFF'S DEPARTMENT	6
HOPE VOLUNTEER FIRE DEPARTMENT	1
HOPEWELL VOLUNTEER FIRE DEPARTMENT/COPIAH COUNTY	3
HOPEWELL/CLARKE COUNTY VOLUNTEER FIRE DEPARTMENT	1
HORN LAKE CITY OF	2
HORN LAKE FIRE DEPARTMENT	36
HOT COFFEE VOLUNTEER FIRE DEPARTMENT	8
HOULKA VOLUNTEER FIRE DEPARTMENT	7



2014 PARTICIPATION REPORT BY ORGANIZATION (Cont.)

Organization Name	Student Count
HOUSE VOLUNTEER FIRE DEPARTMENT	25
HOUSTON COMMUNITY/DISTRICT 2 FIRE DEPARTMENT	5
HOUSTON FIRE DEPARTMENT	34
HOWELL VOLUNTEER FIRE DEPARTMENT	2
HUNTINGTON INGALLS INC	1
HWY 84 WEST VOLUNTEER FIRE DEPARTMENT	5
INDEPENDENCE VOLUNTEER FIRE DEPARTMENT	20
INDIAN MOUND VOLUNTEER FIRE DEPARTMENT	9
INDIANOLA FIRE DEPARTMENT	34
INGOMAR VOLUNTEER FIRE DEPARTMENT	9
INTERNATIONAL PAPER COMPANY-VICKSBURG MILL	25
ISOLA VOLUNTEER FIRE DEPARTMENT	8
ITAWAMBA COUNTY FIRE COORDINATOR	3
ITAWAMBA COUNTY SHERIFF'S DEPARTMENT	4
ITTA BENA VOLUNTEER FIRE DEPARTMENT	10
IUKA FIRE DEPARTMENT	7
JACINTO VOLUNTEER FIRE DEPARTMENT	2
JACKSON COUNTY FIRE DISTRICT	69
JACKSON COUNTY SHERIFF'S DEPARTMENT	27
JACKSON FIRE DEPARTMENT	50
JACKSON MAINTENANCE SHOP CITY OF	4
JACKSON POLICE DEPARTMENT	3
JASPER COUNTY EMERGENCY MANAGEMENT	1
JASPER COUNTY SHERIFF'S DEPARTMENT	1
JEFF DAVIS COUNTY SHERIFF'S DEPARTMENT	1
JEFFERSON COUNTY SHERIFF'S DEPARTMENT	8
JEFFERSON DAVIS COUNTY ARSON INVEST.	1
JEFFERSON DAVIS COUNTY FIRE COORDINATOR	1
JOHNSON VOLUNTEER FIRE DEPARTMENT	1
JONATHAN VOLUNTEER FIRE DEPARTMENT	5
KEARNEY PARK VOLUNTEER FIRE DEPARTMENT	3
KEMPER COUNTY DISTRICT 3 VOLUNTEER FIRE DEPARTMENT	7
KEMPER SPRINGS VOLUNTEER FIRE DEPARTMENT	6
KILMICHAEL VOLUNTEER FIRE DEPARTMENT	1
KILN VOLUNTEER FIRE DEPARTMENT	23
KINGSTON VOLUNTEER FIRE DEPARTMENT	12
KOSCIUSKO FIRE DEPARTMENT	9
KOSCIUSKO-ATTALA COUNTY E-911	2
KOSSUTH VOLUNTEER FIRE DEPARTMENT	3
LAFAYETTE COUNTY FIRE DEPARTMENT	198
LAFAYETTE COUNTY SHERIFF'S DEPARTMENT	2
LAKE EDDINS VOLUNTEER FIRE DEPARTMENT	41
LAKE HARBOR VOLUNTEER FIRE DEPARTMENT	11



2014 PARTICIPATION REPORT BY ORGANIZATION (Cont.)

Organization Name	Student Count
LAKE MONTROSE VOLUNTEER FIRE DEPARTMENT	3
LAKE VOLUNTEER FIRE DEPARTMENT/SCOTT COUNTY	23
LAMAR COUNTY FIRE SERVICES	13
LAMAR COUNTY SHERIFF'S DEPARTMENT	6
LAMBERT VOLUNTEER FIRE DEPARTMENT	9
LANGFORD VOLUNTEER FIRE DEPARTMENT	59
LAUDERDALE COUNTY FIRE COORDINATOR	2
LAUDERDALE COUNTY FIRE SERVICES	14
LAUDERDALE VOLUNTEER FIRE DEPARTMENT	41
LAUREL FIRE DEPARTMENT	25
LAUREL POLICE DEPARTMENT	1
LAWRENCE COUNTY FIRE COORDINATOR	1
LAWRENCE COUNTY FIRE SERVICES	141
LAWRENCE COUNTY SHERIFF'S OFFICE	2
LEAKE COUNTY EMA	1
LEAKE COUNTY FIRE COORDINATOR	2
LEAKESVILLE VOLUNTEER FIRE DEPARTMENT	1
LEARNED VOLUNTEER FIRE DEPARTMENT	6
LEE COUNTY SHERIFF'S DEPARTMENT	1
LEESBURG VOLUNTEER FIRE DEPARTMENT	49
LEETOWN VOLUNTEER FIRE DEPARTMENT	18
LEFLORE COUNTY SHERIFF'S DEPARTMENT	2
LELAND FIRE DEPARTMENT	2
LELAND POLICE DEPARTMENT	4
LENA VOLUNTEER FIRE DEPARTMENT	4
LETOURNEAU COMMUNITY FIRE DEPARTMENT	21
LEWISBURG VOLUNTEER FIRE DEPARTMENT	6
LEXIE VOLUNTEER FIRE DEPARTMENT	2
LEXINGTON VOLUNTEER FIRE DEPARTMENT	2
LIBERTY GROVE VOLUNTEER FIRE DEPARTMENT/ITAWAMBA COUNTY	2
LIBERTY ROAD VOLUNTEER FIRE DEPARTMENT/ADAMS COUNTY	1
LIBERTY RURAL VOLUNTEER FIRE DEPARTMENT/AMITE COUNTY	8
LIZANA VOLUNTEER FIRE DEPARTMENT	21
LONE STAR VOLUNTEER FIRE DEPARTMENT	3
LONG BEACH FIRE DEPARTMENT	43
LONG CREEK VOLUNTEER FIRE DEPARTMENT	2
LONGINO CENTRAL VOLUNTEER FIRE DEPARTMENT	8
LONGTOWN VOLUNTEER FIRE DEPARTMENT	4
LONGVIEW VOLUNTEER FIRE DEPARTMENT	2
LOOP, LLC	11
LOOXAHOMA VOLUNTEER FIRE DEPARTMENT	15
LOMAN VOLUNTEER FIRE DEPARTMENT	10
LOST GAP VOLUNTEER FIRE DEPARTMENT	5



2014 PARTICIPATION REPORT BY ORGANIZATION (Cont.)

Organization Name	Student Count
LOUIN VOLUNTEER FIRE DEPARTMENT	33
LOUISE VOLUNTEER FIRE DEPARTMENT	14
LOUISVILLE FIRE DEPARTMENT	53
LOUISVILLE POLICE DEPARTMENT	6
LOVE VOLUNTEER FIRE DEPARTMENT	20
LOWNDES COUNTY E-911	8
LOWNDES COUNTY FIRE SERVICE	3
LUCEDALE FIRE DEPARTMENT	3
LUCITE INTERNATIONAL	6
LUDLOW VOLUNTEER FIRE DEPARTMENT	26
LUMBERTON VOLUNTEER FIRE DEPARTMENT	28
MABEN VOLUNTEER FIRE DEPARTMENT	16
MACEDONIA VOLUNTEER FIRE DEPARTMENT	12
MACLEAN VOLUNTEER FIRE DEPARTMENT	2
MACON VOLUNTEER FIRE DEPARTMENT	30
MADDEN VOLUNTEER FIRE DEPARTMENT	3
MADISON COUNTY SHERIFF'S DEPARTMENT	1
MADISON FIRE DEPARTMENT	41
MADISON POLICE DEPARTMENT	6
MAGEE FIRE DEPARTMENT	6
MAGEE POLICE DEPARTMENT	5
MAGNOLIA VOLUNTEER FIRE DEPARTMENT	1
MANTACHIE FIRE DEPARTMENT	10
MARION VOLUNTEER FIRE & RESCUE	6
MARKS VOLUNTEER FIRE DEPARTMENT	23
MARS HILL VOLUNTEER FIRE DEPARTMENT/AMITE COUNTY	1
MARSHALL COUNTY E-911	10
MARSHALL COUNTY FIRE COORDINATOR	2
MARSHALL COUNTY FIRE SERVICES TRAINING OFF	1
MARTIN VOLUNTEER FIRE DEPARTMENT	16
MARYDELL/BARNES VOLUNTEER FIRE DEPARTMENT	4
MASHULAVILLE VOLUNTEER FIRE DEPARTMENT	2
MATHISTON VOLUNTEER FIRE DEPARTMENT	9
MAYERSVILLE VOLUNTEER FIRE DEPARTMENT	8
MAYNOR CREEK VOLUNTEER FIRE DEPARTMENT/WAYNE COUNTY	1
MCCOMB FIRE DEPARTMENT	49
MCHENRY VOLUNTEER FIRE DEPARTMENT	42
MCLAIN VOLUNTEER FIRE DEPARTMENT	9
MCLAURIN VOLUNTEER FIRE DEPARTMENT	6
MEADVILLE VOLUNTEER FIRE DEPARTMENT	3
MEEHAN VOLUNTEER FIRE DEPARTMENT	38
MELBOURNE FIRE DEPARTMENT	4
MS EMERGENCY MANAGEMENT AGENCY	7



2014 PARTICIPATION REPORT BY ORGANIZATION (Cont.)

Organization Name	Student Count
MEMPHIS, TN FIRE DEPARTMENT	10
MENDENHALL POLICE DEPARTMENT	4
MENDENHALL VOLUNTEER FIRE DEPARTMENT	74
MERIDIAN FIRE DEPARTMENT	121
MERIDIAN PUBLIC SAFETY TRAINING FACILITY	1
METCALFE VOLUNTEER FIRE DEPARTMENT	4
MIDWAY VOLUNTEER FIRE DEPARTMENT/TISHOMINGO CTY DIST 3	4
MIDWAY VOLUNTEER FIRE DEPARTMENT/YAZOO COUNTY	5
MINTER CITY VOLUNTEER FIRE DEPARTMENT	4
MITCHELL VOLUNTEER FIRE DEPARTMENT	1
MIZE VOLUNTEER FIRE DEPARTMENT	1
MOBILE FIRE & RESCUE DEPARTMENT	22
MONEY VOLUNTEER FIRE DEPARTMENT	22
MONROE COUNTY EMERGENCY MANAGEMENT	1
MONROE COUNTY FIRE COORDINATOR	1
MONROE COUNTY SHERIFF'S DEPARTMENT	3
MONROE FIRE DEPARTMENT	24
MONTEREY VOLUNTEER FIRE DEPARTMENT	20
MONTGOMERY COUNTY FIRE COORDINATOR	1
MONTGOMERY COUNTY SHERIFF'S DEPARTMENT	1
MONTICELLO FIRE DEPARTMENT	80
MONTPELIER VOLUNTEER FIRE DEPARTMENT	3
MONTROSE VOLUNTEER FIRE DEPARTMENT	10
MOOREVILLE VOLUNTEER FIRE DEPARTMENT	16
MOORHEAD VOLUNTEER FIRE DEPARTMENT	7
MORGAN CITY VOLUNTEER FIRE DEPARTMENT	2
MORGANTOWN VOLUNTEER FIRE DEPARTMENT	3
MORTON POLICE DEPARTMENT	1
MORTON VOLUNTEER FIRE DEPARTMENT	8
MOSELLE VOLUNTEER FIRE DEPARTMENT	10
MOSS POINT FIRE DEPARTMENT	31
MOSS POINT POLICE DEPARTMENT	1
MOSSVILLE VOLUNTEER FIRE DEPARTMENT	40
MOUND BAYOU VOLUNTEER FIRE DEPARTMENT	5
MOUNT OLIVE VOLUNTEER FIRE DEPARTMENT	7
MS AIR GUARD/MERIDIAN/186 REFUELING GROUP	33
MS ANG/AIRPORT FIRE DEPARTMENT 172ND CES	32
MS BUREAU OF NARCOTICS	1
MS DEPARTMENT OF HEALTH	3
MS DEPARTMENT OF TRANSPORTATION	13
MS GULF COAST COMMUNITY COLLEGE-GAUTIER	34
MS HIGHWAY PATROL-OKTIBBEHA COUNTY	1
MS HIGHWAY PATROL-PANOLA COUNTY	1



2014 PARTICIPATION REPORT BY ORGANIZATION (Cont.)

Organization Name	Student Count
MS POWER COMPANY	43
MS POWER COMPANY/PLANT EATON HATTIESBURG	1
MS STATE HEALTH DEPARTMENT-LICENSURE & CERTIFICATION	2
MT. NEBO FIRE DEPARTMENT/KEMPER COUNTY DISTRICT 5	9
MT. OLIVET VOLUNTEER FIRE DEPARTMENT	1
MT. PISGAH VOLUNTEER FIRE DEPARTMENT/CARROLL COUNTY	1
MT. SALEM VOLUNTEER FIRE DEPARTMENT	6
MURPHREESBORO VOLUNTEER FIRE DEPARTMENT	2
MYRICK & MILL CREEK FIRE DEPARTMENT	8
MYRTLE VOLUNTEER FIRE DEPARTMENT	8
N. CENTRAL SCOTT COUNTY/MIDWAY VOLUNTEER FIRE DEPT.	11
N. E. JASPER VOLUNTEER FIRE DEPARTMENT	3
N. E. LAUDERDALE VOLUNTEER FIRE DEPARTMENT	4
N. BENTON COUNTY VOLUNTEER FIRE DEPARTMENT	5
N. CARROLLTON FIRE DEPARTMENT	1
N. CENTRAL AMITE COUNTY VOLUNTEER FIRE DEPARTMENT	5
N. E. CALHOUN VOLUNTEER FIRE DEPARTMENT	13
N. E. CLAY COUNTY/#100 VOLUNTEER FIRE DEPARTMENT	8
N. E. ITAWAMBA/FAIRVIEW FIRE DEPARTMENT	9
N. E. LAMAR VOLUNTEER FIRE DEPARTMENT	22
N. E. PEARL RIVER COUNTY FIRE DEPARTMENT	4
N. E. UNION FIRE DEPARTMENT	8
N. E. WARREN COUNTY VOLUNTEER FIRE DEPARTMENT	14
N. FORREST COUNTY VOLUNTEER FIRE DEPARTMENT	19
N. W. NOXUBEE VOLUNTEER FIRE DEPARTMENT	1
N. WOOLMARKET VOLUNTEER FIRE DEPARTMENT	20
NANIH WAIYA VOLUNTEER FIRE DEPARTMENT	2
NATCHEZ FIRE DEPARTMENT	15
NATCHEZ POLICE DEPARTMENT	2
NATCHEZ-ADAMS COUNTY AIRPORT	5
NEELY VOLUNTEER FIRE DEPARTMENT	3
NESBIT VOLUNTEER FIRE DEPARTMENT	19
NESHOBA COUNTY EMA	3
NETTLETON VOLUNTEER FIRE DEPARTMENT	2
NEW ALBANY FIRE DEPARTMENT	89
NEW HEBRON VOLUNTEER FIRE/RESCUE	2
NEW HOPE VOLUNTEER FIRE DEPARTMENT/KEMPER COUNTY	15
NEW ORLEANS LAKEFRONT FIRE DEPARTMENT	3
NEW SITE VOLUNTEER FIRE DEPARTMENT/LINCOLN COUNTY	2
NEWTON COUNTY FIRE COORDINATOR	4
NEWTON COUNTY FIRE SERVICES	1
NEWTON FIRE DEPARTMENT	19
NORTH BEND VOLUNTEER FIRE DEPARTMENT	34



2014 PARTICIPATION REPORT BY ORGANIZATION (Cont.)

Organization Name	Student Count
NORTH OKALOOSA FIRE DISTRICT	23
NORTH TUNICA COUNTY FIRE PROTECTION DISTRICT	15
NORTHEAST FIRE DEPARTMENT JACKSON COUNTY	17
NOXAPATER VOLUNTEER FIRE DEPARTMENT	12
OAK BOWERY VOLUNTEER FIRE DEPARTMENT	15
OAK GROVE VOLUNTEER FIRE DEPARTMENT/WALTHALL COUNTY	8
OAK GROVE/BEAT 4 LAMAR COUNTY FIRE DEPARTMENT	15
OAKLAND VOLUNTEER FIRE DEPARTMENT	2
OAKVALE VOLUNTEER FIRE DEPARTMENT	12
OCEAN SPRINGS FIRE DEPARTMENT	37
OFAHOMA VOLUNTEER FIRE DEPARTMENT	1
OKOLONA FIRE DEPARTMENT	23
OKTIBBEHA COUNTY DISTRICT 5 FIRE DEPARTMENT	6
OKTIBBEHA COUNTY FIRE TRAINING OFFICER	1
OKTIBBEHA COUNTY SHERIFF'S DEPARTMENT	1
OLIVE BRANCH FIRE DEPARTMENT	63
O'NEIL VOLUNTEER FIRE DEPARTMENT	4
O'TUCKOLOFA VOLUNTEER FIRE DEPARTMENT	5
OVETT VOLUNTEER FIRE DEPARTMENT	3
OXFORD FIRE DEPARTMENT	138
PACHUTA VOLUNTEER FIRE DEPARTMENT	8
PADEN VOLUNTEER FIRE DEPARTMENT	4
PAFFORD AMBULANCE SERVICE	1
PANHANDLE VOLUNTEER FIRE DEPARTMENT	3
PANOLA COUNTY CIVIL DEFENSE	1
PANOLA COUNTY SHERIFF'S DEPARTMENT	3
PASCAGOULA FIRE DEPARTMENT	57
PASCAGOULA POLICE DEPARTMENT	19
PASS CHRISTIAN FIRE DEPARTMENT	27
PAULDING VOLUNTEER FIRE DEPARTMENT	21
PAYNES VOLUNTEER FIRE DEPARTMENT	17
PCS NITROGEN	15
PEARL FIRE DEPARTMENT	66
PEARL POLICE DEPARTMENT	2
PEARL RIVER COUNTY SHERIFF'S DEPARTMENT	2
PELAHATCHIE VOLUNTEER FIRE DEPARTMENT	42
PERKINSTON VOLUNTEER FIRE DEPARTMENT	14
PETAL FIRE DEPARTMENT	39
PETAL POLICE DEPARTMENT	1
PHEBA VOLUNTEER FIRE DEPARTMENT/CLAY COUNTY # 500	1
PHILADELPHIA FIRE DEPARTMENT	16
PHILIPP VOLUNTEER FIRE DEPARTMENT	4
PICAYUNE FIRE DEPARTMENT	35



2014 PARTICIPATION REPORT BY ORGANIZATION (Cont.)

Organization Name	Student Count
PIKE COUNTY CIVIL DEFENSE	1
PIKE COUNTY SHERIFF'S DEPARTMENT	2
PINE BURR VOLUNTEER FIRE DEPARTMENT	7
PINE RIDGE VOLUNTEER FIRE DEPARTMENT	8
PINE VALLEY VOLUNTEER FIRE DEPARTMENT	2
PINEDALE VOLUNTEER FIRE DEPARTMENT	5
PINEVILLE VOLUNTEER FIRE DEPARTMENT	1
PINOLA VOLUNTEER FIRE DEPARTMENT	16
PITTSBORO VOLUNTEER FIRE DEPARTMENT	10
PLANTERSVILLE VOLUNTEER FIRE DEPARTMENT	16
PLEASANT GROVE FIRE DEPARTMENT/WAYNE COUNTY	1
POAGVILLE VOLUNTEER FIRE DEPARTMENT	7
POCAHONTAS VOLUNTEER FIRE DEPARTMENT	2
POLKVILLE VOLUNTEER FIRE DEPARTMENT	6
PONTOTOC FIRE DEPARTMENT	1
POPE VOLUNTEER FIRE DEPARTMENT	38
POPLARVILLE FIRE DEPARTMENT	53
PORTERVILLE VOLUNTEER FIRE DEPARTMENT	21
POTTS CAMP VOLUNTEER FIRE DEPARTMENT	41
POWERS VOLUNTEER FIRE DEPARTMENT	19
PRAIRIE POINT FIRE DEPARTMENT/NOXUBEE COUNTY DIST 1	6
PRAIRIE VOLUNTEER FIRE DEPARTMENT	12
PRATTVILLE, AL FIRE DEPARTMENT	1
PRENTISS COUNTY 911	3
PRENTISS COUNTY SHERIFF'S DEPARTMENT	9
PRENTISS VOLUNTEER FIRE DEPARTMENT	2
PRESTON FIRE DEPARTMENT/KEMPER COUNTY DISTRICT 4	10
PROGRESS VOLUNTEER FIRE DEPARTMENT/PIKE COUNTY	6
PRO-TECH FIRE SERVICES LTD	9
PROVIDENCE STATION VOLUNTEER FIRE DEPARTMENT	1
PUCKETT VOLUNTEER FIRE DEPARTMENT	5
PURVIS POLICE DEPARTMENT	2
PURVIS VOLUNTEER FIRE DEPARTMENT	56
QUITMAN VOLUNTEER FIRE DEPARTMENT	10
RALEIGH VOLUNTEER FIRE DEPARTMENT	18
RAMSEY SPRINGS VOLUNTEER FIRE DEPARTMENT	13
RANDOLPH VOLUNTEER FIRE DEPARTMENT	1
RANKIN COUNTY EOC	3
RAWLS SPRINGS VOLUNTEER FIRE DEPARTMENT	4
RAYMOND VOLUNTEER FIRE DEPARTMENT	26
RED BANKS FIRE DEPARTMENT	21
RED HILL VOLUNTEER FIRE DEPARTMENT	1
REDLICK VOLUNTEER FIRE DEPARTMENT	12



2014 PARTICIPATION REPORT BY ORGANIZATION (Cont.)

Organization Name	Student Count
REFINERY TERMINAL FIRE CO.	21
REFORMATION VOLUNTEER FIRE DEPARTMENT/LEAKE COUNTY	3
RESERVOIR FIRE DEPARTMENT STATION #1	1
RESERVOIR FIRE PROTECTION DISTRICT	27
RHODES CHAPEL VOLUNTEER FIRE DEPARTMENT	4
RICHLAND FIRE DEPARTMENT	34
RIGHTON VOLUNTEER FIRE DEPARTMENT	12
RIDGELAND FIRE DEPARTMENT	49
RIPLEY VOLUNTEER FIRE DEPARTMENT	4
RIVERSIDE VOLUNTEER FIRE DISTRICT	70
ROBINHOOD VOLUNTEER FIRE DEPARTMENT	13
ROCK HILL VOLUNTEER FIRE DEPARTMENT	16
ROCKY CREEK VOLUNTEER FIRE DEPARTMENT	11
ROLLING CREEK VOLUNTEER FIRE DEPARTMENT	8
ROLLING FORK VOLUNTEER FIRE DEPARTMENT	24
ROSE HILL VOLUNTEER FIRE DEPARTMENT	11
ROSEBLOOM VOLUNTEER FIRE DEPARTMENT	1
ROSEBURG FOREST PRODUCTS SLP-TAYLORSVILLE	18
ROXIE VOLUNTEER FIRE DEPARTMENT	1
RULEVILLE VOLUNTEER FIRE DEPARTMENT	1
RURAL HILL VOLUNTEER FIRE DEPARTMENT	13
RURAL METRO FIRE DEPARTMENT/FED EX	15
RUSTIN VOLUNTEER FIRE DEPARTMENT	1
S. E. CHICKASAW FIRE DEPARTMENT	7
S. E. CLAY COUNTY/# 700 FIRE DEPARTMENT	5
S. E. COVINGTON VOLUNTEER FIRE DEPARTMENT	5
S. E. LAMAR VOLUNTEER FIRE DEPARTMENT	7
S. E. UNION FIRE DEPARTMENT	5
S. JONES VOLUNTEER FIRE DEPARTMENT	7
S. LAUDERDALE VOLUNTEER FIRE DEPARTMENT	3
S. LEE COUNTY VOLUNTEER FIRE DEPARTMENT	9
S. MARION VOLUNTEER FIRE DEPARTMENT	2
S. W. ALCORN VOLUNTEER FIRE DEPARTMENT	1
S. W. JONES VOLUNTEER FIRE DEPARTMENT	2
S. W. LAMAR VOLUNTEER FIRE DEPARTMENT	5
S. W. NOXUBEE VOLUNTEER FIRE DEPARTMENT	3
SALEM VOLUNTEER FIRE DEPARTMENT	1
SALTILLO FIRE DEPARTMENT	18
SANDERSVILLE VOLUNTEER FIRE DEPARTMENT	3
SAND HILL FIRE DEPARTMENT/GREENE COUNTY BEAT 3	6
SARDIS LOWER LAKE FIRE DEPARTMENT	14
SARDIS VOLUNTEER FIRE DEPARTMENT	30
SAUCIER VOLUNTEER FIRE DEPARTMENT	1



2014 PARTICIPATION REPORT BY ORGANIZATION (Cont.)

Organization Name	Student Count
SAVANNAH FIRE DEPARTMENT/NOXUBEE COUNTY DISTRICT 2	2
SCHLATER VOLUNTEER FIRE DEPARTMENT	1
SCOOBA VOLUNTEER FIRE DEPARTMENT	5
SCOTT COUNTY FIRE COORDINATOR	3
SCOTT COUNTY SHERIFF'S DEPARTMENT	1
SEBASTOPOL VOLUNTEER FIRE DEPARTMENT	9
SEMINARY VOLUNTEER FIRE DEPARTMENT	1
SENATOBIA FIRE DEPARTMENT	26
SHADY GROVE VOLUNTEER FIRE DEPARTMENT	6
SHANNON VOLUNTEER FIRE DEPARTMENT	2
SHARKEY COUNTY SHERIFF'S DEPARTMENT	1
SHARKEY HAMPTON VOLUNTEER FIRE DEPARTMENT	10
SHARON VOLUNTEER FIRE DEPARTMENT	2
SHELL ROAD VOLUNTEER FIRE DEPARTMENT	15
SHERMAN VOLUNTEER FIRE DEPARTMENT	5
SHILOH VOLUNTEER FIRE DEPARTMENT	1
SHIPMAN VOLUNTEER FIRE DEPARTMENT	3
SHUBUTA VOLUNTEER FIRE DEPARTMENT	1
SHUQUALAK VOLUNTEER FIRE DEPARTMENT	8
SIDON VOLUNTEER FIRE DEPARTMENT	2
SILVER CREEK VOLUNTEER FIRE DEPARTMENT	33
SILVER RUN VOLUNTEER FIRE DEPARTMENT	26
SIMPSON COUNTY FIRE STATION # 7	49
SIMPSON COUNTY SHERIFF'S DEPARTMENT	9
SIMPSON VOLUNTEER FIRE DEPARTMENT	2
SIPSEY RIVER VOLUNTEER FIRE DEPARTMENT	4
SKUNA VALLEY VOLUNTEER FIRE DEPARTMENT	3
SLAYDEN-MT. PLEASANT FIRE DEPARTMENT	11
SLEDGE VOLUNTEER FIRE DEPARTMENT	3
SMITH COUNTY EMA	1
SMITHVILLE VOLUNTEER FIRE DEPARTMENT	6
SMYRNA VOLUNTEER FIRE DEPARTMENT	4
SNELL VOLUNTEER FIRE DEPARTMENT	10
SNOW LAKE VOLUNTEER FIRE DEPARTMENT	1
SNOWDOWN/PLEASANT HILL VOLUNTEER FIRE DEPARTMENT	1
SONTAG VOLUNTEER FIRE DEPARTMENT	9
SOUTH MS CORRECTIONAL FACILITY	11
SOUTHAVEN FIRE DEPARTMENT	138
SOUTHEAST FIRE & RESCUE/STATION 1	10
SOUTHWEST MARION VOLUNTEER FIRE DEPARTMENT	11
SOUTHWEST RANKIN VOLUNTEER FIRE DEPARTMENT	14
SPLUNGE VOLUNTEER FIRE DEPARTMENT	4
SPOUT SPRINGS VOLUNTEER FIRE DEPARTMENT	4



2014 PARTICIPATION REPORT BY ORGANIZATION (Cont.)

Organization Name	Student Count
SPRING HILL VOLUNTEER FIRE DEPARTMENT/KEMPER COUNTY	14
SPRINGHILL VOLUNTEER FIRE DEPARTMENT/TALLAHATCHIE CO.	6
ST. TAMMANY, LA FIRE DIST #1	4
ST. TAMMANY, LA FIRE DIST #2	1
ST. TAMMANY, LA FIRE DIST #4	4
STALLO VOLUNTEER FIRE DEPARTMENT	1
STAMPLEY VOLUNTEER FIRE DEPARTMENT	2
STANDING PINE VOLUNTEER FIRE DEPARTMENT	7
STAR VOLUNTEER FIRE DEPARTMENT	18
STARKVILLE FIRE DEPARTMENT	86
STATE FIRE ACADEMY	52
STATE FIRE MARSHAL'S OFFICE	18
STATE LINE VOLUNTEER FIRE DEPARTMENT	5
STEWART VOLUNTEER FIRE DEPARTMENT	1
STOLTHAVEN NEW ORLEANS, LLC	22
STONE COUNTY CIVIL DEFENSE	2
STONE COUNTY FIRE COORDINATOR	3
STONE COUNTY SHERIFF'S DEPARTMENT	2
STONEWALL VOLUNTEER FIRE DEPARTMENT	17
STREET VOLUNTEER FIRE DEPARTMENT	3
STRINGER VOLUNTEER FIRE DEPARTMENT	23
STRONG HOPE VOLUNTEER FIRE DEPARTMENT	10
STUDENT/NOT WITH CODED DEPARTMENT	1
STURGIS/DIST. 4 VOLUNTEER FIRE DEPARTMENT	1
SUMMIT VOLUNTEER FIRE DEPARTMENT/PIKE COUNTY	9
SUMNER VOLUNTEER FIRE DEPARTMENT/TALLAHATCHIE COUNTY	2
SUMRALL VOLUNTEER FIRE DEPARTMENT	6
SUNBELT FIRE APPARATUS, INC.	1
SUNFLOWER COUNTY EMA	2
SUNFLOWER VOLUNTEER FIRE DEPARTMENT	7
SUNNYHILL VOLUNTEER FIRE DEPARTMENT	6
SUNRISE VOLUNTEER FIRE DEPARTMENT	8
SUQALENA VOLUNTEER FIRE DEPARTMENT	35
SYLVARENA VOLUNTEER FIRE DEPARTMENT/SMITH COUNTY	4
SYLVARENA VOLUNTEER FIRE DEPARTMENT/YALOBUSHA COUNTY	3
TALLAHATCHIE COUNTY CIVIL DEFENSE	3
TALLAHATCHIE COUNTY FIRE COORDINATOR	3
TALLAHATCHIE COUNTY SHERIFF'S DEPARTMENT	1
TAMINCO	47
TASK FORCE 3 - MISSISSIPPI	10
TASK FORCE 4 - MID MISSISSIPPI	4
TATE & LYLE	16
TATE COUNTY DISTRICT 1 FIRE DEPARTMENT	4



2014 PARTICIPATION REPORT BY ORGANIZATION (Cont.)

Organization Name	Student Count
TATE COUNTY SHERIFF'S DEPARTMENT	4
TAYLORSVILLE VOLUNTEER FIRE DEPARTMENT	56
TCHULA VOLUNTEER FIRE DEPARTMENT	2
TEASDALE VOLUNTEER FIRE DEPARTMENT	5
TERRY VOLUNTEER FIRE DEPARTMENT	6
THAXTON VOLUNTEER FIRE DEPARTMENT	3
THEADVILLE VOLUNTEER FIRE DEPARTMENT	6
THOMASTOWN VOLUNTEER FIRE DEPARTMENT	3
THORN VOLUNTEER FIRE DEPARTMENT	14
THRASHER VOLUNTEER FIRE DEPARTMENT	1
THREE FORKS FIRE DEPARTMENT	15
THREE MILE CORNER VOLUNTEER FIRE DEPARTMENT	5
TIBBEE VOLUNTEER FIRE DEPARTMENT/CLAY COUNTY #200	5
TIE PLANT VOLUNTEER FIRE DEPARTMENT	16
TILDEN-NEW SALEM FIRE DEPARTMENT	4
TILLATOBA VOLUNTEER FIRE DEPARTMENT	12
TIPPAH COUNTY FIRE COORDINATOR	2
TIPPAH COUNTY SHERIFF'S DEPARTMENT	7
TISHOMINGO COUNTY CIVIL DEFENSE	2
TISHOMINGO COUNTY FIRE COORDINATOR	2
TISHOMINGO COUNTY SHERIFF'S DEPARTMENT	1
TISHOMINGO FIRE DEPARTMENT	2
TOCCOPOLA VOLUNTEER FIRE DEPARTMENT	1
TOMNOLEN VOLUNTEER FIRE DEPARTMENT	14
TOOMSUBA VOLUNTEER FIRE DEPARTMENT	7
TOPEKA/DIST 3 VOLUNTEER FIRE DEPARTMENT	17
TREMONT/DIST. 4 VOLUNTEER FIRE DEPARTMENT	7
TRI-COMMUNITY VOLUNTEER FIRE DEPARTMENT/MARION CO.	48
TUNICA COUNTY SHERIFF'S DEPARTMENT	6
TUNICA VOLUNTEER FIRE DEPARTMENT	54
TUPELO AIRPORT AUTHORITY	6
TUPELO FIRE DEPARTMENT	325
TUSCUMBIA/NEW CHANDLER VOLUNTEER FIRE DEPARTMENT	3
TUTWILER VOLUNTEER FIRE DEPARTMENT	9
TYLERTOWN VOLUNTEER FIRE DEPARTMENT	3
U.S. ENVIRONMENTAL SERVICES	28
UNCODED DEPARTMENT OR INDUSTRY	81
UNION CENTER/THEO VOLUNTEER FIRE DEPARTMENT	3
UNION CHURCH VOLUNTEER FIRE DEPARTMENT	8
UNION COUNTY SHERIFF'S DEPARTMENT	2
UNION VOLUNTEER FIRE DEPARTMENT/CHOCTAW COUNTY	3
UNION VOLUNTEER FIRE DEPARTMENT/JONES COUNTY	2
UNION VOLUNTEER FIRE DEPARTMENT/NEWTON COUNTY	2



2014 PARTICIPATION REPORT BY ORGANIZATION (Cont.)

Organization Name	Student Count
UNITY VOLUNTEER FIRE DISTRICT	3
UTICA VOLUNTEER FIRE DEPARTMENT	2
VAIDEN VOLUNTEER FIRE DEPARTMENT	4
VALERO REFINING-MERAUX LLC	24
VALLEY GROVE VOLUNTEER FIRE DEPARTMENT	2
VALLEY PARK VOLUNTEER FIRE DEPARTMENT	1
VALLEY VIEW VOLUNTEER FIRE DEPARTMENT	3
VANCLEAVE VOLUNTEER FIRE DEPARTMENT	2
VARDAMAN VOLUNTEER FIRE DEPARTMENT	14
VAUGHN VOLUNTEER FIRE DEPARTMENT	2
VELMA VOLUNTEER FIRE DEPARTMENT	15
VERONA FIRE DEPARTMENT	7
VICKSBURG FIRE DEPARTMENT	230
VICTORIA FIRE DEPARTMENT	13
VIMVILLE VOLUNTEER FIRE DEPARTMENT	13
WALLS FIRE DEPARTMENT	51
WALNUT GROVE VOLUNTEER FIRE DEPARTMENT	2
WALNUT VOLUNTEER FIRE DEPARTMENT	7
WALTERS VOLUNTEER FIRE DEPARTMENT	15
WALTHALL COUNTY 4TH DIST VOLUNTEER FIRE DEPARTMENT	6
WALTHALL VOLUNTEER FIRE DEPARTMENT	2
WARREN COUNTY FIRE COORDINATOR	2
WASHINGTON COUNTY FIRE COORDINATOR	1
WASHINGTON COUNTY SHERIFF'S DEPARTMENT	5
WATER VALLEY FIRE DEPARTMENT	11
WATSON VOLUNTEER FIRE DEPARTMENT	13
WAVELAND FIRE DEPARTMENT	5
WAYNE COUNTY BEAT 4 FIRE DEPARTMENT	1
WAYNE COUNTY CENTRAL FIRE STATION	43
WAYNE COUNTY SHERIFF'S DEPARTMENT	1
WAYNESBORO FIRE DEPARTMENT	3
WEBB CITY VOLUNTEER FIRE DEPARTMENT	5
WEBSTER COUNTY SHERIFF'S DEPARTMENT	2
WESSON VOLUNTEER FIRE DEPARTMENT	22
WEST COVINGTON VOLUNTEER FIRE DEPARTMENT	1
WEST HANCOCK VOLUNTEER FIRE DEPARTMENT	24
WEST HARRISON VOLUNTEER FIRE DEPARTMENT	1
WEST HINDS VOLUNTEER FIRE DEPARTMENT	21
WEST POINT FIRE DEPARTMENT	5
WEST UNION VOLUNTEER FIRE DEPARTMENT	2
WHEELER VOLUNTEER FIRE DEPARTMENT	6
WIGGINS FIRE DEPARTMENT	12
WINONA FIRE DEPARTMENT	19



2014 PARTICIPATION REPORT BY ORGANIZATION (Cont.)

Organization Name	Student Count
WINSTON COUNTY FIRE COORDINATOR	1
WOODLAND VOLUNTEER FIRE DEPARTMENT	16
WOODVILLE VOLUNTEER FIRE DEPARTMENT	9
WREN VOLUNTEER FIRE DEPARTMENT	14
YALOBUSHA COUNTY SHERIFF'S DEPARTMENT	1
YAZOO CITY FIRE DEPARTMENT	38
YAZOO COUNTY FIRE COORDINATOR	1
ZETUS VOLUNTEER FIRE DEPARTMENT	4



“Making A
Difference
When It Matters
The Most”

