

MISSISSIPPI

FIRE ACADEMY

**Annual Report
FY 2018**

MISSISSIPPI
FIRE
ACADEMY

A DIVISION OF THE MISSISSIPPI INSURANCE DEPARTMENT



Mississippi State Fire Academy Advisory Board

President of the
Mississippi Fire Chiefs Association
Chief Terry Wages

President of the
Mississippi Fire Fighters Association
Chief John Pope

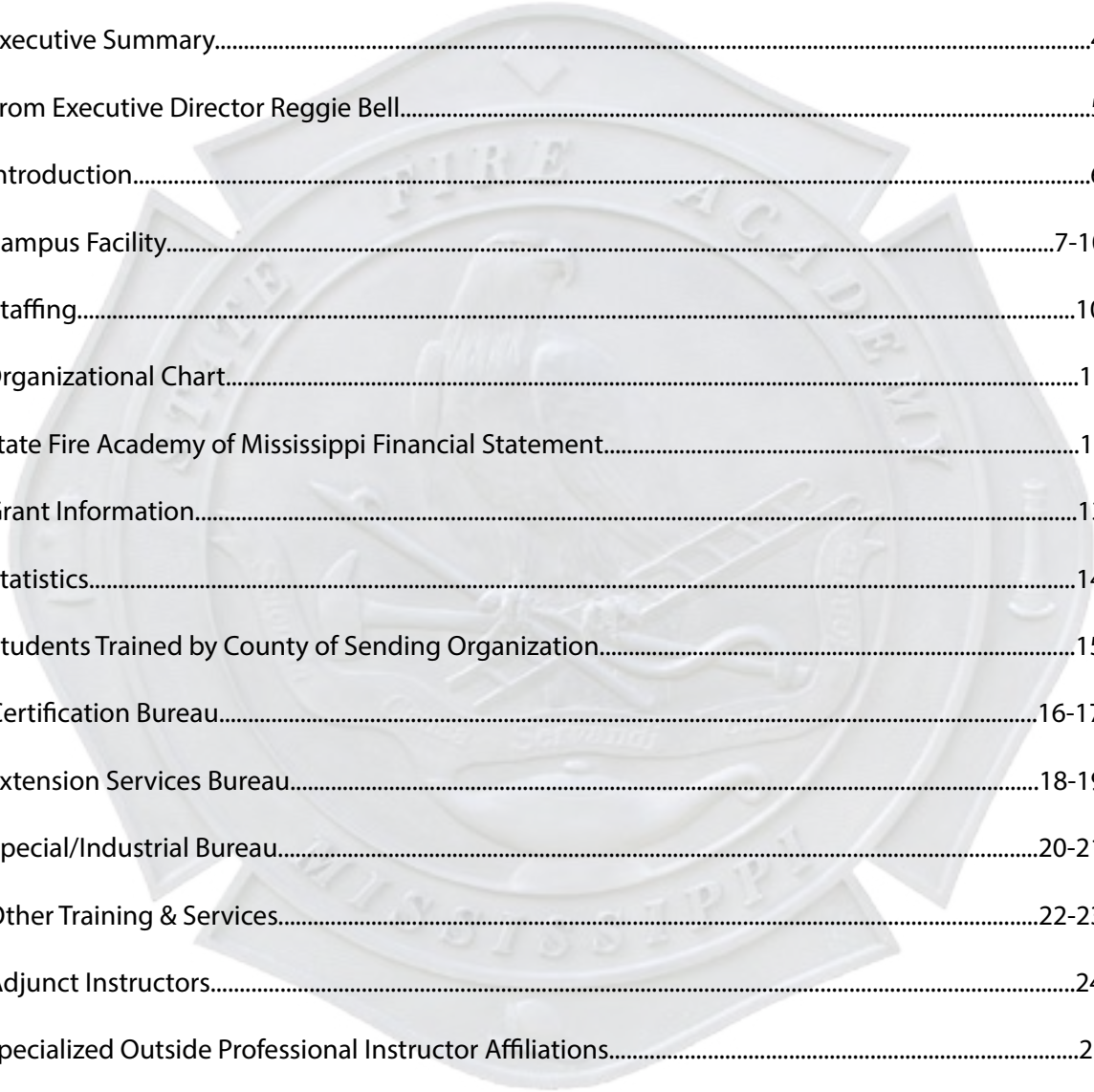
State Fire Marshal's Office
Chief Deputy Ricky Davis

President of the
Mississippi Association of Supervisors
Mr. Brandon Grissom

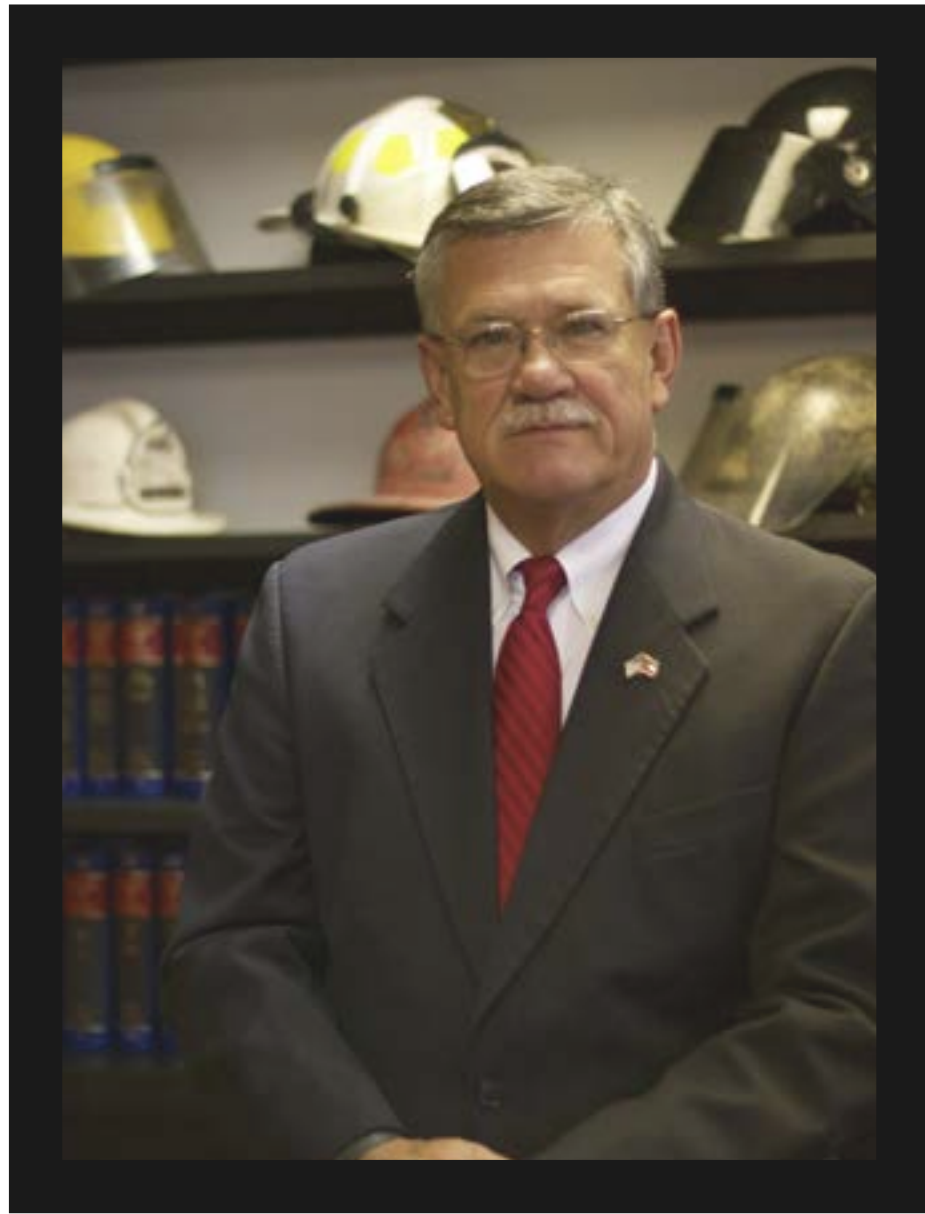
President of the
Mississippi Municipal League
Mayor Glen Barlow

Manager of the
State Rating Bureau
Mr. Joe Shumaker

Index



Advisory Board.....	2
Index.....	3
Executive Summary.....	4
From Executive Director Reggie Bell.....	5
Introduction.....	6
Campus Facility.....	7-10
Staffing.....	10
Organizational Chart.....	11
State Fire Academy of Mississippi Financial Statement.....	12
Grant Information.....	13
Statistics.....	14
Students Trained by County of Sending Organization.....	15
Certification Bureau.....	16-17
Extension Services Bureau.....	18-19
Special/Industrial Bureau.....	20-21
Other Training & Services.....	22-23
Adjunct Instructors.....	24
Specialized Outside Professional Instructor Affiliations.....	25
Organizational Affiliates.....	26
FY 2018 Participation Report by Type of Program.....	27-32
FY 2018 Participation Report by Organization.....	33-51



It is with great pleasure that I present to you the FY2018 Annual Report of the Mississippi State Fire Academy. Two thousand eighteen was a tremendous year for the Academy, marked by major accomplishments that promote our commitment to excellence and our dedication to service.

We would like to thank you for your continued support of the fire service in the State of Mississippi and the State Fire Academy as we continue to be one of the nation's best fire and emergency response training centers.

Reggie Bell
Executive Director

From Executive Director Reggie Bell

When the Mississippi legislature created the Mississippi State Fire Academy and designated it as the agency for training the state's fire personnel, I am certain they could not have foreseen the growth and progress that would shape the Academy as it exists today. Many changes have occurred in the forty years since the Academy was built. We now train approximately 15,000 students per year by offering more than ninety courses, many with multiple deliveries, and many offered both on campus and off-site through our field delivery program. Our students come from career and volunteer fire departments throughout Mississippi, fire departments outside the state, and even from the private sector. Over the years, business and industrial entities including many Fortune 500 companies have entrusted the Mississippi State Fire Academy with training their employees in fire and emergency response.

Certainly, technology has advanced tremendously in the last forty years, and the Mississippi State Fire Academy remains at the forefront of that advancement. Classrooms and other facilities on campus are equipped with wireless Internet, webcasting, and teleconferencing capabilities. These assets provide us the flexibility to innovate our instruction methods and course delivery platforms as the needs of the students, and the departments and communities they serve, change. We are also well-positioned to continue to adapt in a constantly evolving technological world.

In addition to training those who seek careers in fire fighting and emergency response, we consider it a vital part of our mission to educate ordinary Mississippi citizens about fire prevention and safety. To that end, we offer schools, clubs, and civic groups the opportunity to visit our campus, tour the facilities, and learn how they can help minimize the potential for loss of life and property due to fire. There is no charge for these tours.

A program that has gained tremendous attention is our Fire Academy for Elected/Public Officials. This program is designed to be a fun day. It familiarizes the elected/public officials with the basic duties and operations of their local fire departments. Elected/public officials from state, municipal, and county governments have attended this one-day course. Fire departments have benefitted from the experience and knowledge their government leaders gain in this course.

I am proud to say that for over forty years, the Mississippi State Fire Academy has been and will be...

"Making a Difference When It Matters the Most..."





Introduction

State Fire Academy Mission Statement

To serve the Mississippi Fire Service Community and the World by providing quality education and training in fundamental and advanced skills to save lives and property.
 “Making A Difference When It Matters The Most!”

Enabling Legislation

MS Code Annotated Section 45-11-7:

The State Fire Academy was created for the purpose of training and education of persons engaged in municipal, county and industrial fire protection.

The Academy is officially designated as the agency of this state to conduct training for fire personnel on a statewide basis to all duly constituted fire departments.

MS Code Annotated Section 45-11-5:

Creation of a separate account known as the “State Fire Academy Fund” for the deposit of a tax of one-half of one percent (1/2 of 1%) of the gross premium receipts of fire insurance policies levied in the state.

Senate Bill 2362 of the 2016 Regular Legislative Session:

The above legislation changed the direction of the funding received by the Fire Academy to go to the state general fund effective July 1, 2016, in addition to diverting all cash in the account to the state general fund.

MS Code Annotated Section 45-11-7:

The Academy is designated as a division (sub agency) of the Insurance Department.

MS Code Annotated Section 45-11-203:

Within one year of employment, all paid full time fire fighters shall be certified as completing the mandatory training requirements administered by the State Fire Academy.

MS Code Annotated Section 83-1-39:

Requires one member of the sheriff’s department to be the county fire investigator and to attend training at the State Fire Academy in arson investigation.

Philosophy

The State Fire Academy is committed and responsible for the training and education of personnel engaged in municipal, county and industrial fire protection. This student body consists of career, volunteer and industrial fire personnel. The Academy has three training areas, which are 1) Certification Services 2) Extension Services and 3) Industrial and Special Services, which all focus on the Academy’s only function, which is training. All other areas support the staff and students of these training areas.

The Academy’s philosophy is to deliver quality training and instruction to the fire service/emergency response personnel of the State, while adhering to high ethical standards, promoting cooperation among staff with efficiency and integrity in their work while representing the Academy in a professional, courteous, and helpful manner at all times, and safeguarding the assets of the State. The Academy is committed to providing excellent service to its customers by providing training based on National Fire Protection Association (NFPA) standards as well as specialized courses not addressed by NFPA.

Statewide Goal and Benchmark

Public Safety and Order

To protect the public’s safety-by providing training to first responders/emergency responders.

The training students receive from the Academy provides them the skills necessary to save lives and property, which will in turn, lower the insurance fire rating which determines the premium rates on business and homeowner’s insurance.

Campus Facility:

Construction began in 1974, on the Academy campus in Rankin County, Mississippi. The campus is currently located on approximately 112 acres with more than twenty buildings. Courses are offered to students on or off-campus. Course length can vary from one hour to seven weeks. If on-campus, students may elect to stay in the dormitory, which has seventy-five beds, and they are provided two meals a day in the cafeteria. We currently have seven classrooms, and a dedicated student computer lab/library, in addition to the exercise area for students in the dormitory. Multiple training areas on campus include the following:



A Trench Rescue and Emergency Shoring Prop consists of approximately seventy feet of space for practice in emergency shoring techniques and to allow several scenarios for rescue operations. The prop was a generous donation of equipment, labor, and material from the Associated General Contractors of Mississippi-Municipal Contractors Division. The value of the prop is estimated at a quarter of a million dollars.



The Fire Research Building simulates a three-story residential structure with an attic, and a commercial structure with a basement. The building contains over 4,000 square feet of training space and is equipped with five computer controlled fire/smoke rooms with liquid propane gas fueled fire simulators, a Class A burn room, and a prop that simulates a couch fire with flashover capabilities. A four (4) story drill tower is attached to the burn area.



The original Burn Building has four levels and simulates residential and commercial buildings. This building is currently being utilized as a self contained breathing apparatus (SCBA) training area and collapse rescue training building. The SCBA training area utilizes mazes and artificial smoke for training. The collapse rescue area of the building simulates collapsed ceilings, walls, and floors.



The five-story drill tower provides opportunities for high-rise ladder, rope and firefighting operations. In addition to this tower, there is a communications tower erected for training high angle rescue purposes.



The live burn area consists of five large concrete pads as well as one 5,000 square foot airliner fuselage flammable liquid/LP gas burn prop designed specifically to prevent environmental contamination. These training areas include: a fifty foot flowing fuel fire (LP gas Christmas tree fire); LP gas tank fire; pump seal fire; twenty foot vertical tank fire with exposures; horizontal tank fire with an exposed small tank truck; and a three story evolution simulating a chemical processing plant fire.



The hazardous materials training site consists of a large train derailment simulation with eleven cars.



Two lakes are on campus. One is forty feet deep and is utilized for dive rescue training. The other lake is used as a water source for pump testing fire apparatus.



The confined space training site has over 9,000 cubic feet of enclosed area and a forty-five foot tower. The underground area includes vents and drains with several emergency entries/exits.

A forty-one by fourteen foot water vessel is dry docked for the instruction of offshore personnel.



An arson lab is used to build real life room-like structures with furniture to train in arson detection.



Five aircraft simulators are used in the instruction of aircraft rescue training. A landing gear simulator is at this site along with a side-wall aircraft section used in training. We are recognized by the Federal Aviation Administration as an approved training site for this region. Students from all over the United States attend these courses for the required annual training to be in compliance with the FAA regulations.



The Fire Education and Safety Auditorium will seat up to 300 people and is used for graduations and large meetings of the fire service.



New Classroom Building: Two of the classrooms are theatre style that will seat 50 each, while the other two classrooms are traditional with seating capacity of 30 each. Each of the classrooms has the latest technology for course instruction and wireless capabilities.

Future Enhancements:



Progress is being made on the construction of a new training prop, Structural Collapse Rescue. The prop was designed by staff members and most work is being performed by staff. This prop will consist of material to simulate a collapsed building consisting of concrete, masonry, brick, wood and metal. The training will consist of rescue personnel digging, bracing, shoring, and removing victims of the collapse. Heavy machinery such as bulldozers, backhoes, and cranes will be utilized to remove the debris for the safe rescue training.



The National Natural Gas Association, along with Mississippi 811, and the Mississippi Public Service Commission and several energy companies, have begun the construction process for erecting the “Mississippi Safety City” on the Academy campus. The Mississippi Safety City is a one-of-a-kind, small scale city encompassing two acres that will serve as a training facility for natural gas operators, emergency response personnel, and industrial technicians. The city will contain homes, streets, streetlights and natural gas pipelines. Training will include classroom settings as well as real life simulations of natural gas eruptions and responses, and inspection techniques of gas systems. The estimated cost of this project is one million dollars, which will be donated by the sponsors.

Originally, the Academy was one hundred percent (100%) special funded through an insurance premium tax on insurance policies sold in the state, and course collection fees. Senate Bill 2362 of the 2016 Regular Legislative Session changed the direction of the funding received by the Fire Academy to go to the state general fund effective July 1, 2016, in addition to diverting all cash in the account to the state general fund. Additionally, grant funding is requested and often times received for training emergency response personnel on a statewide basis at little to no cost to the departments/counties.

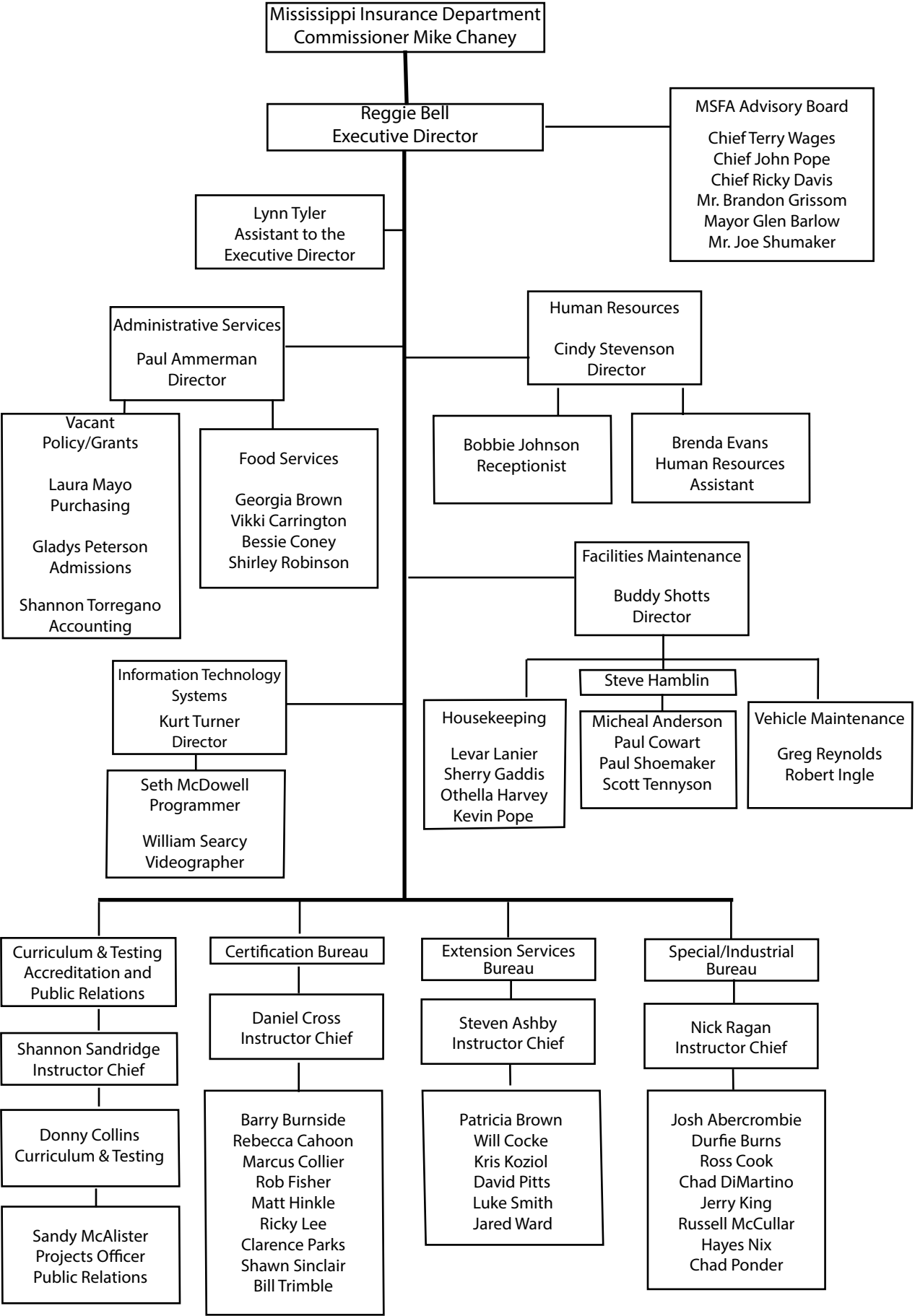
Staffing:

The Academy operates the facility with sixty-three (63) staff members in the following areas:

- Administrative
- Human Resources
- Minimum Standards and Certification Board Secretary
- Information Technology and Videography
- Building, Maintenance, and Vehicle
- Housekeeping
- Cafeteria
- Curriculum/Accreditation and Public Relations
- Instructional Bureaus–Certification, Industrial/Special, Extension Services

The Office of Administrative Services is responsible for the day to day operations of the Academy, student training records and course registration. Human Resources is responsible for staff recruitment, staff training and all employee benefits. The Secretary for the Minimum Standards Board is responsible for all functions related to Board activities. The Informational Technology and Videography Bureau is responsible for all computer systems for staff, the Learning Resource Center for students’ use, custom programming for staff, and videos of class training. The Building, Maintenance, and Vehicle Bureau is responsible for maintaining and repairing all of the agency buildings, equipment, and training props as well as all vehicles owned by the Academy, including Fire Apparatus. Housekeeping is responsible for maintaining the cleanliness of all the buildings, checking students into the dormitory, issuing linens, cleaning rooms, and assisting in grounds keeping when necessary. The Cafeteria Staff is responsible for serving two meals a day to students. The Instructional Bureaus are responsible for all areas of training offered while the Curriculum/Accreditation and Public Relations Bureau is responsible for course accreditation, testing, tours, fire education safety seminars, and publications.

ORGANIZATIONAL CHART



Fund Balance Financial Statement
July 1, 2017 to June 30, 2018

Grant Information
Fiscal Year 2018

State Appropriations House Bill 1499:	\$4,924,678
Funds Transferred from MID via Senate Bill 2649:	\$ 182,500
Grant Funding:	
Sub Grant Funds-Passed through Other State Agencies and Federal Grant Funds-Direct	\$ 530,517
Total Appropriations and Grand Funding:	\$5,637,695
Expenses:	
Salaries, Wages, Fringe Benefits	\$3,623,125
Travel	\$ 24,832
Contractual Services	\$ 525,566
Commodities	\$ 461,853
Equipment Purchases	\$ 264,570
Vehicles	\$ 450,000
Resale Merchandise	\$ 34,107
Total Expenses:	\$5,384,053
Unused Funding as of June 30, 2018:	\$ 253,642

MS Code Annotated Section 45-11-5:

Creation of a separate account known as the "State Fire Academy Fund" for the deposit of a tax of one-half of one percent (1/2 of 1%) of the gross premium receipts of fire insurance policies levied in the state.

Senate Bill 2362 of the 2016 Regular Legislative Session:

The above legislation changed the direction of the funding received by the Fire Academy to go to the state general fund effective July 1, 2016, in addition to diverting all cash in the account to the state general fund.

MS Code Annotated Section 45-11-7 (1):

The State Fire Academy was created for the purpose of training and education of persons engaged in municipal, county and industrial fire protection.

The Academy is officially designated as the agency of this state to conduct training for fire personnel on a statewide basis to all duly constituted fire departments.

The Commissioner of Insurance may establish and charge reasonable fees for the training programs and other services provided by the Academy.

The Academy was able to receive grant funds directly from the Federal Emergency Management Agency/ National Fire Academy. This grant was utilized to pay for deliveries state wide of programs offered by the National Fire Academy.

Grant Funds Received: \$14,653.26
Deliveries Offered: 4
Students Participating: 60

The Mississippi Office of Homeland Security under the MS Department of Public Safety, awarded grant funds from the State Homeland Security Program. This grant was utilized for on campus and field delivery programs that have been approved through the Office of Domestic Preparedness. Courses offerings include Rope Rescue, Confined Space Rescue, Hazardous Materials Awareness/Operations, Hazardous Materials Technician, Trench Rescue, and NIMS courses.

Grant Funds Received: \$197,735.79
Deliveries Offered: 29
Students Participating: 451

The Mississippi Emergency Management Agency awarded grant funds from the Hazardous Materials Emergency Preparedness Program, under the U S Department of Transportation. This grant was utilized for the delivery of Hazardous Materials Technician I, Hazardous Materials Technician II, Hazardous Materials Awareness/Operations, and Fire Chemistry.

Grant Funds Received: \$90,164
Deliveries Offered: 15
Students Participating: 323

The Assistance to Firefighters Grant Program provides funding to local career, volunteer, and combination fire departments as well as state fire training academies. The funding provided is to assist department/training facilities purchase items to aid the organization. With this year's AFG Grant, the Fire Academy purchased a brand new Pumper Truck Apparatus.

Grant Funds Received: \$360,000



Category	Count
Certification	1680
Extension Services	8870
Industry	666
Special	1823



Industry and Out of State Students 856



CERTIFICATION SERVICES BUREAU

- Courses are designed to provide career, combination, and volunteer fire departments a wide range of programs that conform to National Fire Protection Association (NFPA) standards.
- Most courses have obtained International Fire Service Accreditation Congress (IFSAC) and National Board on Fire Service Professional Qualifications (PROBOARD) accreditation.
- Course deliveries consist of campus, field, contract programs, and distant learning programs.



Emergency Medical Care
Engine Company Operations
Fire Department Safety Officer 1521
Fire Department Safety Officer 1521 Field Evaluation
Fire Fighter 1001-I-II
Fire Fighter 1001-I-II: Field Course
Fire Inspector 1031-I
Fire Inspector 1031-II
Fire Investigator 1033
Fire Officer 1021-I-II
Fire Officer 1021-I-II: Distant Learning
Fire Officer 1021-I-II: Field Course
Fire Service Chaplain
Fire Service Instructor 1041-I
Fire Service Instructor 1041-II
Fire Service Instructor 1041-III
Fire Service Instructor 1041-I: Field Course
Fire Service Instructor 1041-I: Online
Fire Service Instructor 1041-II: Online
How To Develop And Assist In Fire Fighter Physical Fitness Programs
Mississippi County Fire Investigator
Mississippi County Fire Investigator: Annual-In-Service
Mississippi Executive Fire Officer Program/Fire Officer 1021-III-IV



EXTENSION SERVICES BUREAU

- Most courses are designed to be presented to the volunteer fire fighter.
- Utilizes a cadre' of adjunct instructors to present training programs across the state.
- Administers the National Fire Protection Association (NFPA) 1002 Driver/Operator and National Fire Protection Association (NFPA) 1003 Airport Fire Fighter which hold International Fire Service Accreditation Congress (IFSAC) and National Board on Fire Service Professional Qualifications (PROBOARD) Accreditation.
- Liaison between the Mississippi State Fire Academy and the National Fire Academy.



Advanced Volunteer Firefighter
Aircraft Rescue & Fire Fighter Refresher
Airport Fire Fighter NFPA-1003
Annual National Fire Academy Weekend
Back-To-Basics: Fire Company Fireground Skills Refresher
Certified Fireground Resource Technician: Modules I-II
Certified Volunteer Driver Operator Levels I-II
Driver/Operator NFPA 1002: Aerial Apparatus Field Evaluation
Driver/Operator NFPA 1002: Pumper Apparatus Field Evaluation
Driver/Operator NFPA 1002: Pumper Apparatus On-Campus Course
Emergency Response To Terrorism: Basic Concepts
Fire Academy For Elected/Public Officials
Fire & Life Safety Educator 1035-I-II-III
Fire Fighter Strategies, Tactics and Techniques
Hazardous Materials NFPA 472 Awareness/Operations Module 1-2 (Non-IFSAC/PROBOARD)
Inter-Departmental Courses (13)
Liquefied Petroleum Gas Tactics & Live Fire Drill
Managing The Rural Emergency Incident
Mississippi Certified Volunteer Fire Fighter I - Module 1
Mississippi Certified Volunteer Fire Fighter I - Module 2
Mississippi Certified Volunteer Fire Fighter II - Module I
Mississippi Certified Volunteer Fire Fighter II - Module 2
Mississippi Chief Fire Officer Designation Program
Mississippi Fire Chief Designation Program
Mississippi Volunteer Fire Officer-I
Mississippi Volunteer Fire Officer-II
National Fire Academy Courses (7)
Passenger Bus Rescue & Incident Management (Field Delivery)
Public Information Officer NFPA 1035
Regional Training Courses (22)



SPECIAL/INDUSTRIAL SERVICES BUREAU

- Programs are generally formatted around the subject of industrial incipient firefighting, technical rescue, and hazardous materials response.
- Most courses have obtained International Fire Service Accreditation Congress (IFSAC) and National Board on Fire Service Professional Qualifications (PROBOARD) accreditation.
- Most special course student fees are supported with federal grant funds.
- Specializes in technical programs geared towards fire department training.
- Program delivery consists of on-campus and off-site programs.



Certified Advanced Rescue Specialist (CARS)

Confined Space Rescue Levels I-II

Confined Space Rescue: Modules 1-4

Fire Service Management-101

Firefighter Intervention Rescue Survival Techniques (FIRST)

Fireground Leadership

Hazardous Materials Awareness And Operations NFPA 472

Hazardous Materials Technician Field Delivery NFPA 472

Hazardous Materials Technician-I NFPA 472

Hazardous Materials Technician-II NFPA 472

Incipient And Structural Fire Brigade Training Programs: Modules I-V

Industrial Fire Fighter Refresher Training

Industrial On-Site Training Programs

NFA Chemistry Of Hazardous Materials: Fire Chem I

Rescue Refresher

Rope Rescue I: Modules 1-4

Rope Rescue Level-I

Rope Rescue Level-II

Smoke Diver

Surface Water & Swiftwater Rescue Levels 1-2

Trench Rescue Levels I-II

Vehicle Extrication & Rescue Levels I-II

OTHER EXTENSION SERVICES



FIRE PUMP REBUILDING CLASS



Fire Apparatus Testing

CURRICULUM & TESTING/PUBLIC RELATIONS BUREAU



The Curriculum/Testing Bureau handles all aspects of testing and accreditation for all of our certification programs. We currently have 24 levels of certification accredited by the International Fire Service Accreditation Congress (IFSAC) and 30 levels of certification accredited by the National Board on Fire Service Professional Qualifications (PROBOARD). The majority of our programs are dually accredited. All of our programs are based on National Fire Protection Association Standards.

Administers the Candidate Physical Ability Test (CPAT) examination for the Mississippi Fire Personnel Minimum Standards and Certification Board (MSCB).



Our facility is also available for public tours. Scheduled tours can be arranged for most types of educational, civic, and special groups. An age appropriate fire prevention/safety information program is delivered to each group along with a tour of the campus. There is no charge for the tours.



The Mississippi State Fire Academy Honor Guard was established in 2008 to serve the fire fighters around the state in their time of need, to help remember and memorialize any fire fighter that serves or served this great state as a token of our appreciation on a state level

Adjunct Instructor Affiliations Fiscal Year 2018



The Academy contracted with the following individuals for course deliveries during the fiscal year.

- | | |
|-------------------|--------------------|
| David Adams | Jerry Johnson |
| Nathan Bell | Cody Keys |
| Justin Boulter | Christopher Laney |
| Gerald Briggs | Turner Luttrell |
| Charles Brown | Tommy Malone |
| Finley Brown | Curtiss Marbury |
| Richard Bryant | Mark McGavok |
| Richard Buford | Jerry Mills |
| James Bunyard | Vernon Morris |
| Robert Bush | Robert Parker |
| Austin Check | Ronald Rhea |
| Barry Collins | Nicholas Rivera |
| Phillip Cummings | Norris Robbins |
| Byran Cunningham | Jeffrey Roy |
| Michael Dimartino | Michael Rutherford |
| Scott Dubuisson | Darryl Smith |
| Dustin Eaves | Lonagcio Smith |
| Juan Garza | Raleigh Sprouse |
| Ricky Gibens | Charles Tate |
| John Grimes | Romeco Traylor |
| Ginger Hand | Michael Watts |
| Kenneth Holbrook | Jerry Whirley |
| Charlene Holliman | Mark Whiteside |
| Patrick Homan | Samuel Winchester |
| George Horn | Charles Yarbrough |
| John Jennings | |

Specialized Outside Professional Instructor Affiliations Fiscal Year 2018

The Academy contracted with the following professional instructors/organizations utilizing grant funding, for course deliveries during the fiscal year.

- Steve Bardwell
- Andrew Byrnes
- Clark Consulting
- James Jaracz
- Edward Kensler, Jr.
- David Matthew
- Johnny Purvis
- Donald Turno

Organizational Affiliations

Much of the development and improvement of a successful training program comes as the direct result of dialogue established with other persons in the business. The members of the State Fire Academy staff are affiliated with many related organizations and thus have opportunities to share ideas. Following is a list of organizations in which staff members are involved.

- International Association of Fire Chiefs
- International Code Council
- International Fire Service Accreditation Congress (IFSAC)
- Mississippi Administrative Assistants Professional Association
- Mississippi Association of Governmental Purchasing and Property Agents
- Mississippi Association of Personnel Administrators
- Mississippi Association of Public Fire Safety Educators
- Mississippi Fire Chiefs Association
- Mississippi Fire Fighters Association
- Mississippi Fire Service Instructors Association
- National Association of Fire Investigators
- National Fire Protection Association



2018 PARTICIPATION REPORT BY TYPE OF PROGRAM

Certification Services Bureau

Course Name	Student Count
CPAT EXAM	336
CPAT ORIENTATION	1
ENGINE COMPANY OPERATIONS	22
FIRE DEPARTMENT SAFETY OFFICER 1521	44
FIRE DEPARTMENT SAFETY OFFICER 1521 FIELD DELIVERY	38
FIRE DEPARTMENT SAFETY OFFICER 1521 ON-LINE	1
FIRE FIGHTER 1001-I-II	182
FIRE FIGHTER 1001-I-II FIELD DELIVERY	47
FIRE INSPECTOR 1031-I	43
FIRE INSPECTOR 1031-II	15
FIRE INVESTIGATOR 1033	85
FIRE OFFICER 1021-I	6
FIRE OFFICER 1021-I-II	47
FIRE OFFICER 1021-I-II FIELD DELIVERY	21
FIRE OFFICER 1021-II	1
FIRE SERVICE CHAPLAIN	7
FIRE SERVICE INSTRUCTOR 1041-I LEVEL I	35
FIRE SERVICE INSTRUCTOR 1041-I ON-LINE	10
FIRE SERVICE INSTRUCTOR 1041-1-I-II	18
FIRE SERVICE INSTRUCTOR 1041-1-I-II FIELD DELIVERY	9
FIRE SERVICE INSTRUCTOR 1041-II	7
FIRE SERVICE INSTRUCTOR 1041-III	15
HAZ MAT NFPA 472 OPERATIONS WITH/PPE & PRODUCT CONTROL	183
HAZ MAT NFPA 472 OPERATIONS W/PPE & PRODUCT CONTROL FIELD DELIVERY	48
HOW TO DEVELOP/ASSIST IN FF PHYSICAL FITNESS PROGRAMS	15
IS 100: INTRODUCTION TO ICS	193
IS 200: ICS FOR SINGLE RESOURCE AND INITIAL ACTIONS	193
MISSISSIPPI COUNTY FIRE INVESTIGATOR	8
MISSISSIPPI COUNTY FIRE INVESTIGATOR: ANNUAL IN-SERVICE	54
MISSISSIPPI EXECUTIVE FIRE OFFICER 1021-III-IV	11
MISSISSIPPI EXECUTIVE FIRE OFFICER 1021-III-IV MODULE 3	11



2018 PARTICIPATION REPORT BY TYPE OF PROGRAM

Extension Services Bureau

Course Name	Student Count
AIRCRAFT RESCUE FIRE FIGHTER REFRESHER & HEAT HOUSE EVOLUTION	8
AIRCRAFT RESCUE FIRE FIGHTER REFRESHER TRAINING (3-HOUR)	260
AIRCRAFT RESCUE FIRE FIGHTER REFRESHER TRAINING (6-HOUR)	57
AIRCRAFT RESCUE FIRE FIGHTER REFRESHER TRAINING (8-HOUR)	3
AIRCRAFT RESCUE FIRE FIGHTER REFRESHER TRAINING (24-HOUR)	2
AIRPORT FIRE FIGHTER	42
APPARATUS PUMP OPERATOR-MODULE 1: BASICS	225
APPARATUS PUMP OPERATOR-MODULE 2: MWS	64
ATMOS ENTERGY NATURAL GAS 101 FOR FIRE FIGHTERS	78
AUTOMOBILE EXTRICATION	212
BASIC AERIAL OPERATIONS: ANNUAL REFRESHER	53
BASIC FIRE COMPANY FIREGROUND SKILLS REFRESHER	34
BASIC RESCUE OPERATIONS	77
CAMPUS FIRE & LIFE SAFETY I: RISK ASSESSMENT	15
CERTIFIED VOLUNTEER DRIVER OPERATOR: LEVEL I	33
CERTIFIED VOLUNTEER DRIVER OPERATOR: LEVEL II	47
CONFINED SPACE RESCUE-MODULE 1	15
DEALING WITH THE PRESS	37
DISASTER PLANNING	37
DISCOVERY & DOCUMENTATION FOR LAWSUITS	70
DRIVER/OPERATOR NFPA 1002: AERIAL APPARATUS	29
DRIVER/OPERATOR NFPA 1002: PUMPER APPARATUS	82
DRIVER/OPERATOR NFPA 1002: PUMPER APPARATUS FIELD DELIVERY	76
EMERGENCY MEDICAL CARE: NFPA 1001 BASED PROGRAM	20
EMS OPERATIONS	1
ENGINE COMPANY OPERATIONS - PART 1	141
EXCELLENT CUSTOMER SERVICE	39
FIRE & LIFE SAFETY EDUCATOR 1035-I	16
FIRE & LIFE SAFETY EDUCATOR 1035-II	9
FIRE & LIFE SAFETY EDUCATOR 1035-III	5
FIRE ACADEMY FOR ELECTED/PUBLIC OFFICIALS	30
FIRE APPARATUS TESTING	9
FIRE ATTACK FOR THE MODERN ERA	32
FIRE FIGHTER ESSENTIAL SKILLS - I	140
FIRE FIGHTER ESSENTIAL SKILLS - II	11
FIRE FIGHTER SELF RESCUE	54
FIRE SERVICE RESCUE 101	44
FIRE SERVICE PERSONNEL RESPONDING TO CURRENT DRUG LAB TRENDS	62
FIREGROUND SUPPORT OPERATIONS	134
FIRST HANDS	69
FIRST HANDS 4-HOUR	598
FIRST HANDS 8-HOUR	26
FIRST HANDS TRAIN-THE-TRAINER	36



2018 PARTICIPATION REPORT BY TYPE OF PROGRAM

Extension Services Bureau (Cont.)

Course Name	Student Count
GETTING STARTED AS A NEW TRAINING CHIEF/OFFICER	34
GRAIN BIN EXTRICATION OPERATIONS	79
HAZARDOUS MATERIALS AWARENESS/OPERATIONS	114
HAZARDOUS MATERIALS AWARENESS/OPERATIONS-MODULE 1	121
HAZARDOUS MATERIALS: INITIAL RESPONSE	226
HOW TO PREPARE FOR THE BEST TRAINING RATING	68
HUMAN TRAFFICKING	37
HUMAN TRAFFICKING: FIRE SERVICE INVOLVEMENT	121
INCIDENT COMMAND FOR HIGHRISE OPERATIONS	26
INDUSTRIAL REFRESHER FIRE FIGHTER TRAINING	17
INTRO TO STRUCTURAL FIRE ATTACK & RESCUE FOR 911 PERSONNEL	8
INTRODUCTION TO AIRCRAFT RESCUE & FIREFIGHTING	185
LEADERSHIP III: STRATEGIES FOR SUPERVISORY SUCCESS	24
LEADERSHIP IN SUPERVISION: PERSPECTIVES IN THINKING	23
LEGISLATIVE UPDATES: DFA/PERS	37
LP-GAS TACTICS & LIVE FIRE DRILL	421
MAKING IT A GREAT DAY - EVERY DAY	37
MANAGING THE RURAL EMERGENCY INCIDENT 6-HOUR	64
MANAGING THE RURAL EMERGENCY INCIDENT 12-HOUR	26
MISSISSIPPI CERTIFIED VOLUNTEER FIRE FIGHTER [NFPA 1001-BASED]	43
MISSISSIPPI CERTIFIED VOLUNTEER FIRE FIGHTER I	329
MISSISSIPPI CERTIFIED VOLUNTEER FIRE FIGHTER II: MODULE I	141
MISSISSIPPI FIRE FIGHTER SAFETY	149
MISSISSIPPI VOLUNTEER FIRE FIGHTER I MODULE I CLASSROOM	448
MISSISSIPPI VOLUNTEER FIRE FIGHTER 1: UP-GRADE	27
MISSISSIPPI VOLUNTEER FIRE FIGHTER 1: UP-GRADE-MODULE 1	9
MISSISSIPPI VOLUNTEER FIRE OFFICER-I	23
MISSISSIPPI VOLUNTEER FIRE OFFICER-II	6
MISSISSIPPI CERTIFIED VOLUNTEER FIRE FIGHTER II: MODULE 2	135
MS VOLUNTEER FF-MODULE 1 - 2ND ATTEMPT	24
NATIONAL TRAFFIC INCIDENT MANAGEMENT	756
NATIONAL TRAFFIC INCIDENT MANAGEMENT: MODULE I	271
NATIONAL TRAFFIC INCIDENT MANAGEMENT: MODULE II	267
NEW FIRE CHIEF I: CHALLENGING ISSUES	25
NEW FIRE CHIEF II: ADMINISTRATIVE ISSUES	22
NEW FIRE CHIEF III: CONTEMPORARY ISSUES	29
NFA: CREATING ENVIRONMENTS FOR PROFESSIONAL GROWTH	23
NFA: SHAPING THE FUTURE	3
OPERATING EMERGENCY VEHICLES-ANNUAL REFRESHER	16
OPERATING EMERGENCY VEHICLES-ANNUAL REFRESHER - EMR	120
OPERATION AWARENESS/RESPONSE TO RAILROAD CARS	332
OVERVIEW OF APPARATUS PUMP OPERATIONS	25
PASSENGER BUS RESCUE & INCIDENT MANAGEMENT	25



2018 PARTICIPATION REPORT BY TYPE OF PROGRAM

Extension Services Bureau (Cont.)

Course Name	Student Count
PIPELINE AWARENESS & EDUCATION: CORE	238
PPE CARE & MAINTENANCE	17
PREPARING FOR RETIREMENT	37
PTSD-TAMING THE DRAGON WITHIN: CHIEF'S PERSPECTIVE	57
PTSD-TAMING THE DRAGON WITHIN: FIRE FIGHTER'S PERSPECTIVE	22
PUBLIC INFORMATION OFFICER	11
RAILROAD INCIDENTS: HOW PREPARED ARE YOU	79
RAPID INTERVENTION TEAMS	27
SEARCH & RESCUE FOR DISASTER RESPONSES	150
SHAPING THE FUTURE	30
SHOCK TRAUMA AIR RESCUE (STARS)	15
STRATEGIES FOR FIRE FIGHTER PERSONAL SUCCESS	22
THE DO'S & DON'TS OF FOAM OPERATION	47
THE FIRE APPARATUS DRIVER	55
TRAINING OPERATIONS IN SMALL DEPARTMENTS	17
TRAINING, RESPONDING AND RETURNING HOME ALIVE	60
UNDERSTANDING THE ROLE OF THE INCIDENT SAFETY OFFICER	15
VOLUNTEER FIRE FIGHTER - MODULE 1 - 2ND ATTEMPT	1
VOLUNTEER FIRE FIGHTER INSTRUCTOR ORIENTATION	8
VP TO 30,000 FEET: FIRE FIGHTER'S PERSPECTIVE	76
VP TO 30,000 FEET: FIRE CHIEF'S PERSPECTIVE	72
WATER BASED FIRE PROTECTION SYSTEM PLANS & REVIEWS	15



2018 PARTICIPATION REPORT BY TYPE OF PROGRAM

Industrial Services Bureau

Course Name	Student Count
CHLOREP TRAINING	172
HIGHWAY TRANSPORTATION EMERGENCY RESPONSE/TRANSFER SPECIAL	14
INDUSTRIAL INTERIOR/EXTERIOR REFRESHER FIRE FIGHTER TRAINING	17
INDUSTRIAL REFRESHER FIRE FIGHTER TRAINING (8-HOUR)	221
INDUSTRIAL REFRESHER FIRE FIGHTER TRAINING (16-HOUR)	12
INDUSTRIAL REFRESHER FIRE FIGHTER TRAINING (24-HOUR)	88
INDUSTRIAL REFRESHER FIRE FIGHTER TRAINING (32-HOUR)	38
INDUSTRIAL RESCUE REFRESHER	14
INDUSTRIAL RESCUE TRAINING	24
INTERIOR/EXTERIOR FIRE BRIGADE TRAINING	22
REFRESHER HAZ MAT TRAINING 24-HOUR	21
REFRESHER HAZ MAT TRAINING 32-HOUR	23



2018 PARTICIPATION REPORT BY TYPE OF PROGRAM

Special Services Bureau

Course Name	Student Count
ADVANCED ROPE RESCUE WORKSHOP: WILDERNESS	8
CHEMISTRY OF HAZARDOUS MATERIALS: FIRE CHEM I	16
CHLORINE/COMMUNICATIONS WITH THE MEDIA	44
CONFINED SPACE RESCUE TECHNICIAN	48
CONFINED SPACE RESCUE MODULE 1	53
CONFINED SPACE RESCUE MODULE 2	65
CONFINED SPACE RESCUE MODULE 3	65
CONFINED SPACE RESCUE MODULE 4	65
DECONTAMINATION/CHEMICAL PROTECTIVE CLOTHING	44
FIRE SERVICE MANAGEMENT 101	23
FIREFIGHTER INTERVENTION RESCUE SURVIVAL TECHNIQUES	45
FIREGROUND LEADERSHIP	60
FIRST HANDS	12
FORCIBLE ENTRY WORKSHOP	5
HAZARDOUS MATERIALS OPERATIONS WITH PPE & CONTROL	4
HAZARDOUS MATERIALS TECHNICIAN	44
HAZARDOUS MATERIALS TECHNICIAN - I	57
HAZARDOUS MATERIALS TECHNICIAN-II	19
INDUSTRIAL INTERIOR/EXTERIOR REFRESHER FIRE FIGHTER TRAINING	23
INDUSTRIAL REFRESHER FIRE FIGHTER TRAINING	38
NON-BULK CONTAINERS/HIGHWAY CARRIERS/RAIL CARS	44
REFRESHER HAZ MAT TRAINING	14
RESPONDING TO HAZARDOUS MATERIALS INCIDENTS	44
ROPE RESCUE AWARENESS & OPERATIONS	19
ROPE RESCUE I - MODULE 1	148
ROPE RESCUE I - MODULE 2	141
ROPE RESCUE I - MODULE 3	138
ROPE RESCUE I - MODULE 4	136
ROPE RESCUE II	55
ROPE RESCUE TECHNICIAN	52
ROPE RESCUE TECHNICIAN - I	34
SMOKE DIVER	48
SOURCES OF ASSISTANCE/HAZ MAT ICS/CHEM. TERMS & DEFINITIONS	44
SURFACE WATER & SWIFTWATER RESCUE LEVEL 1 & 2	22
TACTICAL BREACHING FOR FIRST RESPONDERS	30
TOXICOLOGY/MONITORING DEVICES/WEAPONS OF MASS DESTRUCTION	43
TRENCH RESCUE AND EMERGENCY SHORING TECHNICIAN	31
VEHICLE EXTRICATION & RESCUE TECHNICIAN	22
VEHICLE EXTRICATION & RESCUE : LEVELS I & II	20



2018 PARTICIPATION REPORT BY ORGANIZATION

Organization Name	Student Count
164 CES/CEF	10
ABEL'S STORE VOLUNTEER FIRE DEPARTMENT	5
ABERDEEN FIRE DEPARTMENT	16
ACKERMAN FIRE DEPARTMENT	7
ADAMS COUNTY EMERGENCY MANAGEMENT	7
ADAMS COUNTY FIRE COORDINATOR	2
ADAMS COUNTY SHERIFF'S DEPARTMENT	6
ADATON/SELF CREEK FIRE DEPARTMENT	22
AGRICOLA VOLUNTEER FIRE DEPARTMENT	4
AKZO NOBEL	33
ALCORN COUNTY EMA	3
ALCORN COUNTY FIRE COORDINATOR	2
ALCORN COUNTY FIRE SERVICES	2
ALCORN COUNTY SHERIFF'S DEPARTMENT	2
ALCORN STATE UNIVERSITY	1
ALGOMA VOLUNTEER FIRE DEPARTMENT	12
ALLEN VOLUNTEER FIRE DEPARTMENT	24
ALPHABA/COCKRUM/INGRAMS FIRE DEPARTMENT	7
ALPINE VOLUNTEER FIRE DEPARTMENT	1
AMACKERTOWN VOLUNTEER FIRE DEPARTMENT	4
AMITE COUNTY FIRE COORDINATOR	1
AMITE COUNTY SHERIFF'S DEPARTMENT	1
AMORY FIRE DEPARTMENT	22
AMSERV	2
ANGUILLA VOLUNTEER FIRE DEPARTMENT	1
ARCOLA VOLUNTEER FIRE DEPARTMENT	12
ARLINGTON VOLUNTEER FIRE DEPARTMENT/NESHOBA COUNTY	7
ARLINGTON VOLUNTEER FIRE DEPARTMENT/PERRY COUNTY	1
ASHLAND VOLUNTEER FIRE DEPARTMENT	9
ATTALA COUNTY BEAT 2/MCCOOL FIRE DEPARTMENT	2
ATTALA COUNTY CENTRAL FIRE DEPARTMENT	14
ATTALA COUNTY SHERIFF'S DEPARTMENT	3
ATTALA COUNTY/FRIENDSHIP VOLUNTEER FIRE DEPARTMENT	1
BAILEY VOLUNTEER FIRE DEPARTMENT	8
BALDWYN VOLUNTEER FIRE DEPARTMENT	4
BANNER VOLUNTEER FIRE DEPARTMENT/CALHOUN COUNTY	5
BANNER/BOUNDS VOLUNTEER FIRE DEPARTMENT/ITAWAMBA COUNTY	1
BARLOW VOLUNTEER FIRE DEPARTMENT	1
BARNES VOLUNTEER FIRE DEPARTMENT	1
BARTAHATCHIE VOLUNTEER FIRE DEPARTMENT	2
BARTON VOLUNTEER FIRE DEPARTMENT/GEORGE COUNTY	2
BARTON VOLUNTEER FIRE DEPARTMENT/MARSHALL COUNTY	3
BASIN VOLUNTEER FIRE DEPARTMENT	10



2018 PARTICIPATION REPORT BY ORGANIZATION (Cont.)

Organization Name	Student Count
BASSFIELD VOLUNTEER FIRE DEPARTMENT	9
BATESVILLE FIRE DEPARTMENT	24
BAY SPRINGS VOLUNTEER FIRE DEPARTMENT	10
BAY ST. LOUIS FIRE DEPARTMENT	35
BAYSIDE PARK VOLUNTEER FIRE DEPARTMENT	5
BEAUMONT VOLUNTEER FIRE DEPARTMENT	14
BEAVER LAKE VOLUNTEER FIRE DEPARTMENT	7
BEAVER MEADOWS VOLUNTEER FIRE DEPARTMENT	3
BEAVERDAM VOLUNTEER FIRE DEPARTMENT	2
BECKER-ATHENS VOLUNTEER FIRE DEPARTMENT	8
BECKHAM VOLUNTEER FIRE DEPARTMENT	3
BELMONT FIRE DEPARTMENT	15
BELZONI FIRE DEPARTMENT	15
BENCH VOLUNTEER FIRE DEPARTMENT	3
BENNDALE VOLUNTEER FIRE DEPARTMENT	1
BENTON VOLUNTEER FIRE DEPARTMENT	21
BENTONIA VOLUNTEER FIRE DEPARTMENT	7
BETHEDEN VOLUNTEER FIRE DEPARTMENT	44
BETHEL VOLUNTEER FIRE DEPARTMENT	3
BEULAH HUBBARD VOLUNTEER FIRE DEPARTMENT/NEWTON COUNTY	2
BIG CREEK VOLUNTEER FIRE DEPARTMENT	13
BIG LEVEL VOLUNTEER FIRE DEPARTMENT	2
BIGGERSVILLE VOLUNTEER FIRE DEPARTMENT	2
BILOXI FIRE DEPARTMENT	548
BIRMINGHAM RIDGE FIRE PROTECTION DISTRICT	17
BLACKLAND VOLUNTEER FIRE DEPARTMENT	3
BLYTHEVILLE FIRE DEPARTMENT	11
BOGGY VOLUNTEER FIRE DEPARTMENT	11
BOGUE CHITTO VOLUNTEER FIRE DEPARTMENT	6
BOLIVAR COUNTY FIRE DEPARTMENT	48
BOLTON VOLUNTEER FIRE DEPARTMENT	1
BOONEVILLE FIRE DEPARTMENT	137
BOONEVILLE POLICE DEPARTMENT	1
BOSSIER CITY, LA FIRE DEPARTMENT	1
BOSSIER CITY, LA FIRE DISTRICT #1	1
BOVINA VOLUNTEER FIRE DEPARTMENT	11
BRANDON FIRE DEPARTMENT	53
BRANDON POLICE DEPARTMENT	1
BRAXTON VOLUNTEER FIRE DEPARTMENT	11
BRIDGETOWN VOLUNTEER FIRE DEPARTMENT	5
BROOKHAVEN FIRE DEPARTMENT	17
BROOKHAVEN POLICE DEPARTMENT	3
BROOKLYN VOLUNTEER FIRE DEPARTMENT	25



2018 PARTICIPATION REPORT BY ORGANIZATION (Cont.)

Organization Name	Student Count
BROOKSVILLE VOLUNTEER FIRE DEPARTMENT	8
BROWNSVILLE VOLUNTEER FIRE DEPARTMENT	1
BRUCE VOLUNTEER FIRE DEPARTMENT	21
BUDE VOLUNTEER FIRE DEPARTMENT	7
BUNKOM HILL/NEW HOPE VOLUNTEER FIRE DEPARTMENT	13
BURNSVILLE VOLUNTEER FIRE DEPARTMENT	12
BURTON VOLUNTEER FIRE DEPARTMENT	18
BYHALIA VOLUNTEER FIRE DEPARTMENT	49
BYNUM VOLUNTEER FIRE DEPARTMENT	24
BYRAM FIRE DEPARTMENT	17
BYRAM VOLUNTEER FIRE DEPARTMENT	3
BYWY VOLUNTEER FIRE DEPARTMENT/CHOCTAW COUNTY	4
CALEDONIA FIRE DEPARTMENT/LOWNDES COUNTY DISTRICT 1	10
CALHOUN CITY VOLUNTEER FIRE DEPARTMENT	17
CALHOUN COUNTY FIRE COORDINATOR	9
CALHOUN VOLUNTEER FIRE DEPARTMENT	14
CAMDEN FIRE & RESCUE	2
CANNONSBURG/CHURCH HILL VOLUNTEER FIRE DEPARTMENT	8
CANTON FIRE DEPARTMENT	31
CARMICHAEL VOLUNTEER FIRE DEPARTMENT	7
CARNES VOLUNTEER FIRE DEPARTMENT	8
CARRIERE VOLUNTEER FIRE DEPARTMENT	24
CARROLL COUNTY SHERIFF'S DEPARTMENT	2
CARTHAGE FIRE DEPARTMENT	14
CASCILLA VOLUNTEER FIRE DEPARTMENT	1
CASON VOLUNTEER FIRE DEPARTMENT	12
CATO VOLUNTEER FIRE DEPARTMENT	3
CAYCE VOLUNTEER FIRE DEPARTMENT	20
CEDAR CREEK VOLUNTEER FIRE DEPARTMENT	15
CENTER RIDGE VOLUNTEER FIRE DEPARTMENT	1
CENTER VOLUNTEER FIRE DEPARTMENT/UNION COUNTY	19
CENTRAL CLAY COUNTY/#600 FIRE DEPARTMENT	1
CENTRAL GEORGE COUNTY VOLUNTEER FIRE DEPARTMENT	3
CENTRAL JACKSON COUNTY FIRE DEPARTMENT	26
CENTRAL JASPER COUNTY VOLUNTEER FIRE DEPARTMENT	7
CENTRAL LAMAR COUNTY FIRE DEPARTMENT	8
CENTRAL OKTIBBEHA /LONGVIEW FIRE DEPARTMENT	17
CENTREVILLE VOLUNTEER FIRE DEPARTMENT	1
CHARLESTON VOLUNTEER FIRE DEPARTMENT	6
CHESTER VOLUNTEER FIRE DEPARTMENT	1
CHICKEN BONE FIRE DEPARTMENT	3
CHLORINE INSTITUTE	172
CHOCTAW COUNTY FIRE COORDINATOR	2



2018 PARTICIPATION REPORT BY ORGANIZATION (Cont.)

Organization Name	Student Count
CHOCTAW COUNTY SHERIFF'S DEPARTMENT	1
CHOCTAW FIRE DEPARTMENT	11
CHUNKY VOLUNTEER FIRE DEPARTMENT	21
CITY OF MERIDIAN	1
CLAIBORNE COUNTY FIRE DEPARTMENT	1
CLARKDALE VOLUNTEER FIRE DEPARTMENT	18
CLARKE COUNTY E-911	4
CLARKE COUNTY EMA	4
CLARKE COUNTY FIRE COORDINATOR	1
CLARKE COUNTY FIRE SERVICE	5
CLARKEDALE VOLUNTEER FIRE DEPARTMENT	5
CLARKSDALE FIRE DEPARTMENT	27
CLAY COUNTY SHERIFF'S DEPARTMENT	1
CLERMONT HARBOR VOLUNTEER FIRE DEPARTMENT	15
CLEVELAND FIRE DEPARTMENT	58
CLINTON FIRE DEPARTMENT	121
COAHOMA COUNTY FIRE DEPARTMENT	83
COLDWATER VOLUNTEER FIRE DEPARTMENT	3
COLES POINT VOLUNTEER FIRE DEPARTMENT	7
COLLINS FIRE DEPARTMENT	3
COLLINSVILLE VOLUNTEER FIRE DEPARTMENT	10
COLUMBIA FIRE DEPARTMENT	56
COLUMBUS AIR FORCE BASE FIRE DEPARTMENT	1
COLUMBUS FIRE DEPARTMENT	95
COMO VOLUNTEER FIRE DEPARTMENT	5
COPIAH COUNTY EMERGENCY MANAGEMENT	7
CORINTH FIRE DEPARTMENT	202
COUNTY LINE VOLUNTEER FIRE DEPARTMENT	21
COURTLAND VOLUNTEER FIRE DEPARTMENT	7
COVINGTON COUNTY EMA	1
CRAWFORD FIRE DEPARTMENT/LOWNDES COUNTY DISTRICT 4	1
CRENSHAW VOLUNTEER FIRE DEPARTMENT	1
CROSSROADS VOLUNTEER FIRE DEPARTMENT/PEARL RIVER COUNTY	2
CRYSTAL SPRINGS VOLUNTEER FIRE DEPARTMENT	9
CUEVAS VOLUNTEER FIRE DEPARTMENT	3
CULKIN VOLUNTEER FIRE DEPARTMENT	74
CURTIS-LOCKE VOLUNTEER FIRE DEPARTMENT	2
D'IBERVILLE FIRE DEPARTMENT	42
DAK AMERICAS MISSISSIPPI INC	26
DAMASCUS FIRE DEPARTMENT	5
DECATUR VOLUNTEER FIRE DEPARTMENT	20
DEKALB VOLUNTEER FIRE DEPARTMENT	7
DELTA STATE UNIVERSITY FACILITIES MANAGEMENT	1



2018 PARTICIPATION REPORT BY ORGANIZATION (Cont.)

Organization Name	Student Count
DENNIS VOLUNTEER FIRE DEPARTMENT	6
DERBY-WHITESANDS VOLUNTEER FIRE DEPARTMENT	13
DERMA VOLUNTEER FIRE DEPARTMENT	15
DESOTO COUNTY EMERGENCY SERVICES	21
DESOTO VOLUNTEER FIRE DEPARTMENT/CLARKE COUNTY	8
DIAMONDHEAD FIRE DEPARTMENT	33
DISTRICT 3 VOLUNTEER FIRE DEPARTMENT LOWNDES COUNTY	32
DIXIE VOLUNTEER FIRE DEPARTMENT	10
DIXON VOLUNTEER FIRE DEPARTMENT	12
DOTHAN REGIONAL AIRPORT FIRE DEPARTMENT	7
DREW VOLUNTEER FIRE DEPARTMENT	17
DRY CREEK VOLUNTEER FIRE DEPARTMENT	6
DUCK HILL VOLUNTEER FIRE DEPARTMENT	2
DUMAS VOLUNTEER FIRE DEPARTMENT	10
E 3 ENVIRONMENTAL	12
E. FRANKLIN RURAL FIRE DEPARTMENT	1
E. LINCOLN VOLUNTEER FIRE DEPARTMENT	7
E. NESHOPA VOLUNTEER FIRE DEPARTMENT	6
E. OKTIBBEHA COUNTY FIRE DEPARTMENT	28
E. QUITMAN VOLUNTEER FIRE DEPARTMENT	1
E. UNION VOLUNTEER FIRE DEPARTMENT	5
E. WINSTON COUNTY VOLUNTEER FIRE DEPARTMENT	7
EAGLE LAKE VOLUNTEER FIRE DEPARTMENT	8
EAST MS STATE HOSPITAL	1
ECRU VOLUNTEER FIRE DEPARTMENT	17
EDEN VOLUNTEER FIRE DEPARTMENT	2
EDINBURG VOLUNTEER FIRE DEPARTMENT	6
ELLIOTT VOLUNTEER FIRE DEPARTMENT	7
ELLISVILLE FIRE DEPARTMENT	9
ELLISVILLE STATE SCHOOL	2
ENGLAND AIRPARK FIRE DEPARTMENT	20
ENGLISH CONSUL FIRE DEPARTMENT	1
ENHANCED ENVIRONMENTAL	12
ENON VOLUNTEER FIRE DEPARTMENT	7
ENTERPRISE VOLUNTEER FIRE DEPARTMENT	1
ERGON REFINING, INC.	131
ESCATAWPA VOLUNTEER FIRE DEPARTMENT	3
ETHEL VOLUNTEER FIRE DEPARTMENT	3
EUDORA VOLUNTEER FIRE DEPARTMENT	5
EVERGREEN-CAROLINA VOLUNTEER FIRE DEPARTMENT	1
EXXON-BATON ROUGE REFINERY	45
EXXON-BILLINGS, MT	12
FARMHAVEN VOLUNTEER FIRE DEPARTMENT	5



2018 PARTICIPATION REPORT BY ORGANIZATION (Cont.)

Organization Name	Student Count
FARMINGTON VOLUNTEER FIRE DEPARTMENT	63
FAYETTE VOLUNTEER FIRE DEPARTMENT	10
FEDERAL BUREAU OF INVESTIGATION	3
FENTON VOLUNTEER FIRE DEPARTMENT	6
FERNWOOD VOLUNTEER FIRE DEPARTMENT	4
FIRST CHEMICAL CORPORATION	41
FISHER FERRY VOLUNTEER FIRE DEPARTMENT	41
FLORENCE-CITY OF	6
FLOWOOD FIRE DEPARTMENT	179
FOREST FIRE DEPARTMENT	3
FORREST COUNTY SHERIFF'S DEPARTMENT	5
FORT POLK FIRE & EMERGENCY SERVICE	2
FORTS LAKE/FRANKLIN CREEK VOLUNTEER FIRE DEPARTMENT	3
FOSTER MOUND VOLUNTEER FIRE DEPARTMENT	19
FOXWORTH VOLUNTEER FIRE DEPARTMENT	21
FRANKLIN COUNTY DISTRICT 5 VOLUNTEER FIRE DEPARTMENT	12
FRIARS POINT VOLUNTEER FIRE DEPARTMENT	2
FRIENDSHIP VOLUNTEER FIRE DEPARTMENT	1
FULTON FIRE DEPARTMENT	68
FURRS VOLUNTEER FIRE DEPARTMENT	4
GAUTIER FIRE DEPARTMENT	46
GEESLIN CORNER VOLUNTEER FIRE DEPARTMENT	3
GEORGE COUNTY CORRECTIONAL FACILITY	16
GEORGE COUNTY SHERIFF'S DEPARTMENT	1
GEORGETOWN VOLUNTEER FIRE DEPARTMENT	2
GERMANTOWN, TN FIRE DEPARTMENT	2
GLACIER PARK INTERNATIONAL AIRPORT FIRE DEPARTMENT	2
GLADE VOLUNTEER FIRE DEPARTMENT	26
GLEN VOLUNTEER FIRE DEPARTMENT	3
GLUCKSTADT FIRE PROTECTION DISTRICT	15
GOLDEN VOLUNTEER FIRE DEPARTMENT	31
GORE SPRINGS VOLUNTEER FIRE DEPARTMENT	11
GRANBY VOLUNTEER FIRE DEPARTMENT	6
GRAND GULF NUCLEAR STATION	15
GREENE COUNTY SHERIFF'S DEPARTMENT	1
GREENFIELD VOLUNTEER FIRE DEPARTMENT	4
GREENLEAF VOLUNTEER FIRE DEPARTMENT	5
GREENVILLE FIRE DEPARTMENT	186
GREENVILLE MID-DELTA AIRPORT	3
GREENWOOD FIRE DEPARTMENT	111
GRENADA COUNTY CIVIL DEFENSE	1
GRENADA COUNTY SHERIFF'S DEPARTMENT	1
GRENADA FIRE DEPARTMENT	38



2018 PARTICIPATION REPORT BY ORGANIZATION (Cont.)

Organization Name	Student Count
GRENADA POLICE DEPARTMENT	11
GULF PARK ESTATES/ST. ANDREWS FIRE DISTRICT	10
GULFPORT FIRE DEPARTMENT	559
GUNTOWN VOLUNTEER FIRE DEPARTMENT	5
H.A.L. VOLUNTEER FIRE DEPARTMENT	6
HAMILTON VOLUNTEER FIRE DEPARTMENT/MONROE COUNTY	9
HANCOCK COUNTY EMERGENCY MANAGEMENT	5
HANCOCK COUNTY SHERIFF'S DEPARTMENT	1
HARMONY VOLUNTEER FIRE DEPARTMENT	26
HARRISON COUNTY FIRE SERVICE	64
HARRISON COUNTY SHERIFF'S DEPARTMENT	1
HARRISVILLE VOLUNTEER FIRE DEPARTMENT	8
HATTIESBURG FIRE DEPARTMENT	317
HATTIESBURG POLICE DEPARTMENT	16
HATTIESBURG/LAUREL REGIONAL AIRPORT AUTHORITY	4
HAZLEHURST FIRE DEPARTMENT	1
HAZLEHURST VOLUNTEER FIRE DEPARTMENT	7
HEBRON VOLUNTEER FIRE DEPARTMENT	14
HEIDELBERG VOLUNTEER FIRE DEPARTMENT	3
HENLEYFIELD VOLUNTEER FIRE DEPARTMENT	4
HERNANDO FIRE DEPARTMENT	12
HEUCKS RETREAT VOLUNTEER FIRE DEPARTMENT	21
HEUCKS RETREAT VOLUNTEER FIRE DEPARTMENT SECRETARY	3
HICKORY FLAT VOLUNTEER FIRE DEPARTMENT	5
HICKORY VOLUNTEER FIRE DEPARTMENT/NEWTON COUNTY	14
HIGH POINT VOLUNTEER FIRE DEPARTMENT	12
HINDS COUNTY EMERGENCY MANAGEMENT	1
HINDS COUNTY SHERIFF'S DEPARTMENT	2
HOB0-BIG V VOLUNTEER FIRE DEPARTMENT	6
HOG CHAIN VOLUNTEER FIRE DEPARTMENT	7
HOLCOMB VOLUNTEER FIRE DEPARTMENT	1
HOLLANDALE VOLUNTEER FIRE DEPARTMENT	8
HOLLY BLUFF VOLUNTEER FIRE DEPARTMENT	1
HOLLY SPRINGS FIRE DEPARTMENT	80
HOMWOOD VOLUNTEER FIRE DEPARTMENT	11
HOPE VOLUNTEER FIRE DEPARTMENT	10
HOPEWELL VOLUNTEER FIRE DEPARTMENT/COPIAH COUNTY	16
HOPEWELL/CLARKE COUNTY VOLUNTEER FIRE DEPARTMENT	2
HORN LAKE FIRE DEPARTMENT	15
HOT COFFEE VOLUNTEER FIRE DEPARTMENT	3
HOULKA VOLUNTEER FIRE DEPARTMENT	6
HOUSE VOLUNTEER FIRE DEPARTMENT	1
HOUSTON FIRE DEPARTMENT	27



2018 PARTICIPATION REPORT BY ORGANIZATION (Cont.)

Organization Name	Student Count
HOWELL VOLUNTEER FIRE DEPARTMENT	1
HUNTINGTON INGALLS INC	6
HURRICANE VOLUNTEER FIRE DEPARTMENT	6
INDEPENDENCE VOLUNTEER FIRE DEPARTMENT	11
INDIAN MOUND VOLUNTEER FIRE DEPARTMENT	8
INDIANOLA FIRE DEPARTMENT	55
INDIANOLA VOLUNTEER FIRE DEPARTMENT	37
INGOMAR VOLUNTEER FIRE DEPARTMENT	10
INTERNATIONAL PAPER COMPANY-VICKSBURG MILL	38
INVERNESS VOLUNTEER FIRE DEPARTMENT	9
ITAWAMBA COUNTY FIRE SERVICES	1
ITAWAMBA COUNTY SHERIFF'S DEPARTMENT	1
ITTA BENA VOLUNTEER FIRE DEPARTMENT	9
IUKA FIRE DEPARTMENT	3
JACKSON COUNTY FIRE COORDINATOR	1
JACKSON COUNTY FIRE DISTRICT	80
JACKSON FIRE DEPARTMENT	77
JACKSON POLICE DEPARTMENT	3
JANICE VOLUNTEER FIRE DEPARTMENT	24
JASPER COUNTY SHERIFF'S DEPARTMENT	3
JEFF DAVIS COUNTY SHERIFF'S DEPARTMENT	2
JEFFERSON COUNTY FIRE COORDINATOR	17
JEFFERSON COUNTY SHERIFF'S DEPARTMENT	1
JOHNSON VOLUNTEER FIRE DEPARTMENT	6
JUMPERTOWN VOLUNTEER FIRE DEPARTMENT	1
KEESLER AIR FORCE BASE/81 MSG/IDF FIRE RESCUE	1
KEMPER COUNTY FIRE COORDINATOR	1
KEMPER SPRINGS VOLUNTEER FIRE DEPARTMENT	1
KILMICHAEL VOLUNTEER FIRE DEPARTMENT	1
KILN VOLUNTEER FIRE DEPARTMENT	5
KINGS DAUGHTER MEDICAL CENTER	1
KINGSTON VOLUNTEER FIRE DEPARTMENT	11
KOSCIUSKO FIRE DEPARTMENT	1
KOSSUTH VOLUNTEER FIRE DEPARTMENT	10
LAFAYETTE COUNTY FIRE DEPARTMENT	133
LAKE EDDINS VOLUNTEER FIRE DEPARTMENT	10
LAKE HARBOR VOLUNTEER FIRE DEPARTMENT	21
LAKE MONTROSE VOLUNTEER FIRE DEPARTMENT	5
LAKE VOLUNTEER FIRE DEPARTMENT/SCOTT COUNTY	14
LAMAR COUNTY EMA	1
LAMAR COUNTY FIRE SERVICES	12
LAMAR COUNTY SHERIFF'S DEPARTMENT	1
LAMBERT VOLUNTEER FIRE DEPARTMENT	6



2018 PARTICIPATION REPORT BY ORGANIZATION (Cont.)

Organization Name	Student Count
LANGFORD VOLUNTEER FIRE DEPARTMENT	7
LAUDERDALE COUNTY EMERGENCY MANAGEMENT	8
LAUDERDALE COUNTY FIRE SERVICES	11
LAUDERDALE COUNTY SHERIFF'S DEPARTMENT	1
LAUDERDALE VOLUNTEER FIRE DEPARTMENT	9
LAUREL FIRE DEPARTMENT	284
LAUREL POLICE DEPARTMENT	1
LAWRENCE COUNTY FIRE SERVICES	75
LEAKE COUNTY EMA	7
LEAKE COUNTY SHERIFF'S DEPARTMENT	2
LEAKESVILLE VOLUNTEER FIRE DEPARTMENT	13
LEE COUNTY SHERIFF'S DEPARTMENT	1
LEESBURG VOLUNTEER FIRE DEPARTMENT	26
LEETOWN VOLUNTEER FIRE DEPARTMENT	21
LELAND FIRE DEPARTMENT	5
LETOURNEAU COMMUNITY FIRE DEPARTMENT	1
LEWISBURG VOLUNTEER FIRE DEPARTMENT	2
LEXIE VOLUNTEER FIRE DEPARTMENT	16
LIBERTY ROAD VOLUNTEER FIRE DEPARTMENT/ADAMS COUNTY	3
LIBERTY RURAL VOLUNTEER FIRE DEPARTMENT/AMITE COUNTY	14
LINCOLN COUNTY SHERIFF'S DEPARTMENT	2
LINWOOD VOLUNTEER FIRE DEPARTMENT	1
LIZANA VOLUNTEER FIRE DEPARTMENT	20
LODI VOLUNTEER FIRE DEPARTMENT	9
LONG BEACH FIRE DEPARTMENT	32
LONG CREEK VOLUNTEER FIRE DEPARTMENT	10
LONGINO CENTRAL VOLUNTEER FIRE DEPARTMENT	20
LONGTOWN VOLUNTEER FIRE DEPARTMENT	7
LONGVIEW VOLUNTEER FIRE DEPARTMENT	8
LOOP, LLC	14
LOOXAHOMA VOLUNTEER FIRE DEPARTMENT	3
LORMAN VOLUNTEER FIRE DEPARTMENT	30
LOST GAP VOLUNTEER FIRE DEPARTMENT	9
LOUIN VOLUNTEER FIRE DEPARTMENT	8
LOUISVILLE FIRE DEPARTMENT	29
LOVE VOLUNTEER FIRE DEPARTMENT	3
LOWNDES COUNTY DISTRICT 5/ARTESIA FIRE DEPARTMENT	7
LOWNDES COUNTY FIRE COORDINATOR	1
LOYD STAR VOLUNTEER FIRE DEPARTMENT	1
LSR VOLUNTEER FIRE DEPARTMENT/SUNFLOWER COUNTY	13
LUDLOW VOLUNTEER FIRE DEPARTMENT	2
LUMBERTON VOLUNTEER FIRE DEPARTMENT	9
MABEN VOLUNTEER FIRE DEPARTMENT	4



2018 PARTICIPATION REPORT BY ORGANIZATION (Cont.)

Organization Name	Student Count
MACEDONIA VOLUNTEER FIRE DEPARTMENT	33
MACON VOLUNTEER FIRE DEPARTMENT	14
MADISON COUNTY EMA	6
MADISON COUNTY SHERIFF'S DEPARTMENT	2
MADISON FIRE DEPARTMENT	61
MADISON POLICE DEPARTMENT	6
MAGEE FIRE DEPARTMENT	46
MAGEE POLICE DEPARTMENT	2
MAGNOLIA VOLUNTEER FIRE DEPARTMENT/PIKE COUNTY	3
MAGNOLIA VOLUNTEER FIRE DEPARTMENT/STONE COUNTY	14
MANTACHIE FIRE DEPARTMENT	15
MARION COUNTY FIRE COORDINATOR	6
MARKS VOLUNTEER FIRE DEPARTMENT	20
MARRERO HARVEY FIRE DEPARTMENT	2
MARS HILL VOLUNTEER FIRE DEPARTMENT/WINSTON COUNTY	4
MARSHALL COUNTY SHERIFF'S DEPARTMENT	1
MARTIN VOLUNTEER FIRE DEPARTMENT	14
MARYDELL/BARNES VOLUNTEER FIRE DEPARTMENT	1
MAYNOR CREEK VOLUNTEER FIRE DEPARTMENT/WAYNE COUNTY	1
MCCOMB FIRE DEPARTMENT	49
MCHENRY VOLUNTEER FIRE DEPARTMENT	37
MCLAIN VOLUNTEER FIRE DEPARTMENT	6
MCLAURIN VOLUNTEER FIRE DEPARTMENT	24
MCNEILL VOLUNTEER FIRE DEPARTMENT	3
MEADVILLE VOLUNTEER FIRE DEPARTMENT	4
MEEHAN VOLUNTEER FIRE DEPARTMENT	8
MEMA	1
MEMPHIS, TN FIRE DEPARTMENT	72
MENDENHALL POLICE DEPARTMENT	2
MENDENHALL VOLUNTEER FIRE DEPARTMENT	18
MERIDIAN FIRE DEPARTMENT	368
MERIDIAN POLICE DEPARTMENT	3
METCALFE VOLUNTEER FIRE DEPARTMENT	1
MIDWAY VOLUNTEER FIRE DEPARTMENT/YAZOO COUNTY	4
MIDWAY VOLUNTEER FIRE DEPARTMENT/TISHOMINGO COUNTY DISTRICT 3	1
MINTER CITY VOLUNTEER FIRE DEPARTMENT	4
MITCHELL VOLUNTEER FIRE DEPARTMENT	12
MIZE VOLUNTEER FIRE DEPARTMENT	3
MOBILE FIRE DEPARTMENT	13
MOBILE FIRE & RESCUE	12
MONEY VOLUNTEER FIRE DEPARTMENT	16
MONROE COUNTY SHERIFF'S DEPARTMENT	2
MONROE FIRE DEPARTMENT	16



2018 PARTICIPATION REPORT BY ORGANIZATION (Cont.)

Organization Name	Student Count
MONTEREY VOLUNTEER FIRE DEPARTMENT	42
MONTGOMERY COUNTY EMERGENCY MANAGEMENT AGENCY	1
MONTGOMERY COUNTY SHERIFF'S DEPARTMENT	2
MONTICELLO FIRE DEPARTMENT	4
MONTROSE VOLUNTEER FIRE DEPARTMENT	5
MOOREVILLE EGGVILLE VOLUNTEER FIRE DEPARTMENT	32
MOOREVILLE VOLUNTEER FIRE DEPARTMENT	2
MOORHEAD VOLUNTEER FIRE DEPARTMENT	8
MORGAN CITY VOLUNTEER FIRE DEPARTMENT	6
MORTON VOLUNTEER FIRE DEPARTMENT	6
MOSELLE VOLUNTEER FIRE DEPARTMENT	1
MOSS POINT FIRE DEPARTMENT	29
MOSSVILLE VOLUNTEER FIRE DEPARTMENT	5
MOUND BAYOU VOLUNTEER FIRE DEPARTMENT	1
MOUNT OLIVE VOLUNTEER FIRE DEPARTMENT	13
MS AIR GUARD/MERIDIAN/186th REFUELING GROUP	38
MS ANG/AIRPORT FIRE DEPARTMENT 172ND CES	134
MS BUREAU OF NARCOTICS	12
MS DEPARTMENT OF CORRECTIONS	1
MS DEPARTMENT OF EDUCATION	2
MS DEPARTMENT OF HEALTH	5
MS HIGHWAY PATROL - HINDS COUNTY	9
MS HIGHWAY PATROL - JACKSON COUNTY	1
MS HIGHWAY PATROL - PIKE COUNTY	1
MS HIGHWAY PATROL - UNION COUNTY	1
MS STATE GUARD	19
MS STATE UNIVERSITY	2
MS UNIVERSITY FOR WOMEN	1
MS VALLEY STATE UNIVERSITY DIRECTOR OF PHYSICAL MANAGEMENT	1
MT. NEBO FIRE DEPARTMENT/KEMPER COUNTY DISTRICT 5	1
MT. OLIVET VOLUNTEER FIRE DEPARTMENT	1
MT. PISGAH VOLUNTEER FIRE DEPARTMENT/GREENE COUNTY	5
MT. SALEM VOLUNTEER FIRE DEPARTMENT	1
MYRICK & MILL CREEK FIRE DEPARTMENT	21
MYRTLE VOLUNTEER FIRE DEPARTMENT	4
N. CENTRAL SCOTT COUNTY/MIDWAY VOLUNTEER FIRE DEPARTMENT	12
N. BENTON COUNTY VOLUNTEER FIRE DEPARTMENT	4
N. CARROLLTON FIRE DEPARTMENT	5
N. CROSSROADS VOLUNTEER FIRE DEPARTMENT	3
N. FORREST COUNTY VOLUNTEER FIRE DEPARTMENT	60
N. WOOLMARKET VOLUNTEER FIRE DEPARTMENT	3
N. E. BENTON VOLUNTEER FIRE DEPARTMENT	15
N. E. CALHOUN VOLUNTEER FIRE DEPARTMENT	5



2018 PARTICIPATION REPORT BY ORGANIZATION (Cont.)

Organization Name	Student Count
N. E. CLAY COUNTY/#100 VOLUNTEER FIRE DEPARTMENT	12
N. E. ITAWAMBA/FAIRVIEW FIRE DEPARTMENT	16
N. E. JASPER VOLUNTEER FIRE DEPARTMENT	2
N. E. LAMAR VOLUNTEER FIRE DEPARTMENT	13
N. E. MS COMMUNITY COLLEGE	1
N. E. UNION FIRE DEPARTMENT	9
N. E. WARREN COUNTY VOLUNTEER FIRE DEPARTMENT	30
N. W. LOWNDES/DISTRICT 2 FIRE DEPARTMENT	34
NANIH WAIYA VOLUNTEER FIRE DEPARTMENT	6
NATCHEZ FIRE DEPARTMENT	159
NATCHEZ-ADAMS COUNTY AIRPORT	3
NEELY VOLUNTEER FIRE DEPARTMENT	2
NESBIT VOLUNTEER FIRE DEPARTMENT	8
NESHOBA COUNTY EMA	1
NESHOBA COUNTY SHERIFF'S DEPARTMENT	1
NETTLETON VOLUNTEER FIRE DEPARTMENT	7
NEW ALBANY FIRE DEPARTMENT	121
NEW AUGUSTA VOLUNTEER FIRE DEPARTMENT	18
NEW HEBRON VOLUNTEER FIRE/RESCUE	4
NEW SITE VOLUNTEER FIRE DEPARTMENT/LINCOLN COUNTY	5
NEW SITE VOLUNTEER FIRE DEPARTMENT/PRENTISS COUNTY	65
NEW ZION VOLUNTEER FIRE DEPARTMENT	12
NEWTON COUNTY EMERGENCY MANAGEMENT	2
NEWTON COUNTY FIRE SERVICES	2
NEWTON FIRE DEPARTMENT	42
NON-FLOOD PROTECTION ASSET MANAGEMENT AUTHORITY	5
NORTH BEND VOLUNTEER FIRE DEPARTMENT	4
NORTH HAVEN VOLUNTEER FIRE DEPARTMENT	2
NORTH TUNICA COUNTY FIRE PROTECTION DISTRICT	8
NORTHEAST FIRE DEPARTMENT JACKSON COUNTY	6
NORTHWEST ARKANSAS REGIONAL AIRPORT	3
NORTHWEST JACKSON COUNTY VOLUNTEER FIRE DEPARTMENT	17
NOXUBEE COUNTY EMERGENCY MANAGEMENT	3
NOXUBEE COUNTY FIRE COORDINATOR	2
NOXUBEE COUNTY SHERIFF'S DEPARTMENT	4
O'NEIL VOLUNTEER FIRE DEPARTMENT	4
O'TUCKOLOFA VOLUNTEER FIRE DEPARTMENT	2
OAK BOWERY VOLUNTEER FIRE DEPARTMENT	4
OAK GROVE VOLUNTEER FIRE DEPARTMENT/WALTHALL COUNTY	2
OAK GROVE/BEAT 4 LAMAR COUNTY FIRE DEPARTMENT	17
OAKLAND VOLUNTEER FIRE DEPARTMENT	1
OAKVALE VOLUNTEER FIRE DEPARTMENT	6
OCEAN SPRINGS FIRE DEPARTMENT	77



2018 PARTICIPATION REPORT BY ORGANIZATION (Cont.)

Organization Name	Student Count
OKOLONA FIRE DEPARTMENT	19
OKTIBBEHA COUNTY DISTRICT 5 FIRE DEPARTMENT	10
OKTIBBEHA COUNTY SHERIFF'S DEPARTMENT	2
OLD PEARL VOLUNTEER FIRE DEPARTMENT	1
OLIVE BRANCH FIRE DEPARTMENT	56
OLOH VOLUNTEER FIRE DEPARTMENT	2
OSYKA VOLUNTEER FIRE DEPARTMENT	1
OVETT VOLUNTEER FIRE DEPARTMENT	5
OXFORD FIRE DEPARTMENT	98
PACHUTA VOLUNTEER FIRE DEPARTMENT	10
PADEN VOLUNTEER FIRE DEPARTMENT	23
PAFFORD AMBULANCE SERVICE	12
PASCAGOULA FIRE DEPARTMENT	54
PASS CHRISTIAN FIRE DEPARTMENT	103
PAULDING VOLUNTEER FIRE DEPARTMENT	3
PAYNES VOLUNTEER FIRE DEPARTMENT	3
PEARL FIRE DEPARTMENT	70
PELAHATCHIE VOLUNTEER FIRE DEPARTMENT	36
PERRY COUNTY FIRE COORDINATOR	4
PETAL FIRE DEPARTMENT	40
PHEBA VOLUNTEER FIRE DEPARTMENT/CLAY COUNTY #500	3
PHILADELPHIA FIRE DEPARTMENT	10
PHILIPP VOLUNTEER FIRE DEPARTMENT	3
PICAYUNE FIRE DEPARTMENT	62
PIKE COUNTY CIVIL DEFENSE	1
PIKE COUNTY SHERIFF'S DEPARTMENT	3
PINE BURR VOLUNTEER FIRE DEPARTMENT	1
PINE GROVE VOLUNTEER FIRE DEPARTMENT	6
PINE RIDGE VOLUNTEER FIRE DEPARTMENT	6
PINE VALLEY VOLUNTEER FIRE DEPARTMENT	3
PINEDALE VOLUNTEER FIRE DEPARTMENT	12
PINEVILLE VOLUNTEER FIRE DEPARTMENT	2
PINOLA VOLUNTEER FIRE DEPARTMENT	5
PIPERTON FIRE DEPARTMENT	2
PISGAH COMMUNITY FIRE DEPARTMENT	30
PITTSBORO VOLUNTEER FIRE DEPARTMENT	8
PLEASANT GROVE VOLUNTEER FIRE DEPARTMENT/PANOLA COUNTY	11
PLEASANT RIDGE VOLUNTEER FIRE DEPARTMENT	8
POAGVILLE VOLUNTEER FIRE DEPARTMENT	8
POCAHONTAS VOLUNTEER FIRE DEPARTMENT	8
POLKVILLE VOLUNTEER FIRE DEPARTMENT	9
PONTOTOC FIRE DEPARTMENT	10
POPE VOLUNTEER FIRE DEPARTMENT	8



2018 PARTICIPATION REPORT BY ORGANIZATION (Cont.)

Organization Name	Student Count
POPLARVILLE FIRE DEPARTMENT	11
PORTERVILLE VOLUNTEER FIRE DEPARTMENT	7
POTTS CAMP VOLUNTEER FIRE DEPARTMENT	39
POWERS VOLUNTEER FIRE DEPARTMENT	19
PRAIRIE POINT FIRE DEPARTMENT/NOXUBEE COUNTY DIST 1	1
PRAIRIE VOLUNTEER FIRE DEPARTMENT	1
PRENTISS VOLUNTEER FIRE DEPARTMENT	14
PRESTON FIRE DEPARTMENT/KEMPER COUNTY DISTRICT 4	4
PRO-TECH FIRE SERVICES LTD	9
PROGRESS VOLUNTEER FIRE DEPARTMENT/PIKE COUNTY	3
PROVIDENCE STATION VOLUNTEER FIRE DEPARTMENT	1
PUCKETT VOLUNTEER FIRE DEPARTMENT	12
PURVIS POLICE DEPARTMENT	12
PURVIS VOLUNTEER FIRE DEPARTMENT	11
QUITMAN VOLUNTEER FIRE DEPARTMENT	8
RALEIGH VOLUNTEER FIRE DEPARTMENT	13
RANDOLPH VOLUNTEER FIRE DEPARTMENT	8
RANKIN COUNTY SHERIFF'S DEPARTMENT	3
RAWLS SPRINGS VOLUNTEER FIRE DEPARTMENT	21
RAYMOND VOLUNTEER FIRE DEPARTMENT	13
RED BANKS FIRE DEPARTMENT	28
RED HILL VOLUNTEER FIRE DEPARTMENT	19
REDLICK VOLUNTEER FIRE DEPARTMENT	5
RESERVOIR FIRE PROTECTION DISTRICT	33
RHODES CHAPEL VOLUNTEER FIRE DEPARTMENT	3
RICHLAND FIRE DEPARTMENT	89
RICHMOND VOLUNTEER FIRE DEPARTMENT	1
RIGHTON VOLUNTEER FIRE DEPARTMENT	9
RIDGELAND FIRE DEPARTMENT	64
RIVERSIDE VOLUNTEER FIRE DISTRICT	14
ROCK HILL VOLUNTEER FIRE DEPARTMENT	5
ROCKY CREEK VOLUNTEER FIRE DEPARTMENT	8
ROLLING CREEK VOLUNTEER FIRE DEPARTMENT	7
ROLLING FORK VOLUNTEER FIRE DEPARTMENT	11
ROSE HILL VOLUNTEER FIRE DEPARTMENT	1
ROSEBLOOM VOLUNTEER FIRE DEPARTMENT	1
ROXIE VOLUNTEER FIRE DEPARTMENT	1
RULEVILLE VOLUNTEER FIRE DEPARTMENT	5
RUNNELSTOWN VOLUNTEER FIRE DEPARTMENT	8
RURAL HILL VOLUNTEER FIRE DEPARTMENT	5
RURAL METRO FIRE DEPARTMENT/FED EX	15
RUSTIN VOLUNTEER FIRE DEPARTMENT	4
S. E. CHICKASAW FIRE DEPARTMENT	5



2018 PARTICIPATION REPORT BY ORGANIZATION (Cont.)

Organization Name	Student Count
S. E. CLAY COUNTY/#700 FIRE DEPARTMENT	3
S. E. COVINGTON VOLUNTEER FIRE DEPARTMENT	8
S. E. LAMAR VOLUNTEER FIRE DEPARTMENT	6
S. E. UNION FIRE DEPARTMENT	9
S. JONES VOLUNTEER FIRE DEPARTMENT	21
S. LAUDERDALE VOLUNTEER FIRE DEPARTMENT	4
S. MARION VOLUNTEER FIRE DEPARTMENT	1
S. W. ALCORN VOLUNTEER FIRE DEPARTMENT	1
S. W. COVINGTON VOLUNTEER FIRE DEPARTMENT	2
S. W. JONES VOLUNTEER FIRE DEPARTMENT	15
S. W. LAMAR VOLUNTEER FIRE DEPARTMENT	7
SABOUGLA VOLUNTEER FIRE DEPARTMENT	20
SALEM VOLUNTEER FIRE DEPARTMENT	4
SALLIS FIRE DEPARTMENT/ATTALA COUNTY BEAT 4	1
SALTILLO FIRE DEPARTMENT	87
SAM DALE COMMUNITY VOLUNTEER FIRE DEPARTMENT	1
SANDERSVILLE VOLUNTEER FIRE DEPARTMENT	17
SANDHILL FIRE DEPARTMENT/GREEN COUNTY BEAT 3	5
SARDIS LOWER LAKE FIRE DEPARTMENT	9
SARDIS VOLUNTEER FIRE DEPARTMENT	9
SAUCIER VOLUNTEER FIRE DEPARTMENT	1
SCHLATER VOLUNTEER FIRE DEPARTMENT	1
SCOوبا VOLUNTEER FIRE DEPARTMENT	1
SCOTT COUNTY FIRE COORDINATOR	1
SCOTT COUNTY SHERIFF'S DEPARTMENT	2
SEBASTOPOL VOLUNTEER FIRE DEPARTMENT	10
SEMINARY VOLUNTEER FIRE DEPARTMENT	9
SENATOBIA FIRE DEPARTMENT	31
SHADY GROVE VOLUNTEER FIRE DEPARTMENT	18
SHANNON VOLUNTEER FIRE DEPARTMENT	1
SHARKEY COUNTY SHERIFF'S DEPARTMENT	1
SHARKEY HAMPTON VOLUNTEER FIRE DEPARTMENT	2
SHARON VOLUNTEER FIRE DEPARTMENT	17
SHELL PIPELINE COMPANY LP	44
SHELL ROAD VOLUNTEER FIRE DEPARTMENT	3
SHERMAN VOLUNTEER FIRE DEPARTMENT	18
SHILOH VOLUNTEER FIRE DEPARTMENT	11
SHIPMAN VOLUNTEER FIRE DEPARTMENT	5
SHUBUTA VOLUNTEER FIRE DEPARTMENT	6
SILVER CREEK VOLUNTEER FIRE DEPARTMENT	4
SILVER RUN VOLUNTEER FIRE DEPARTMENT	7
SIMPSON COUNTY FIRE STATION #7	9
SIMPSON VOLUNTEER FIRE DEPARTMENT	1



2018 PARTICIPATION REPORT BY ORGANIZATION (Cont.)

Organization Name	Student Count
SKUNA VALLEY VOLUNTEER FIRE DEPARTMENT	1
SLAYDEN-MT. PLEASANT FIRE DEPARTMENT	5
SLEDGE VOLUNTEER FIRE DEPARTMENT	2
SMITH COUNTY EMA	6
SMITH COUNTY FIRE SERVICES	2
SMITHDALE VOLUNTEER FIRE DEPARTMENT	1
SMYRNA VOLUNTEER FIRE DEPARTMENT	12
SNELL VOLUNTEER FIRE DEPARTMENT	8
SNOW LAKE VOLUNTEER FIRE DEPARTMENT	15
SNOWDOWN/PLEASANT HILL VOLUNTEER FIRE DEPARTMENT	4
SONTAG VOLUNTEER FIRE DEPARTMENT	1
SOSO VOLUNTEER FIRE DEPARTMENT	6
SOUTH MS CORRECTIONAL FACILITY	4
SOUTH TISHOMINGO VOLUNTEER FIRE DEPARTMENT	1
SOUTHAVEN FIRE DEPARTMENT	44
SOUTHEAST FIRE & RESCUE/STATION 1	14
SOUTHEAST PEARL RIVER VOLUNTEER FIRE SEPARTMENT	16
SOUTHWEST MARION VOLUNTEER FIRE DEPARTMENT	3
SPRING HILL VOLUNTEER FIRE DEPARTMENT/KEMPER COUNTY	2
SPRINGHILL VOLUNTEER FIRE DEPARTMENT/TALLAHATCHIE CO.	3
ST. TAMMANY, LA FIRE DISTRICT #1	1
ST. TAMMANY, LA FIRE DISTRICT #2	3
ST. TAMMANY, LA FIRE DISTRICT #4	3
STAMPLEY VOLUNTEER FIRE DEPARTMENT	10
STANDING PINE VOLUNTEER FIRE DEPARTMENT	1
STARKVILLE FIRE DEPARTMENT	166
STATE FIRE ACADEMY	99
STATE FIRE MARSHAL'S OFFICE	12
STATE LINE VOLUNTEER FIRE DEPARTMENT	1
STEEP HOLLOW VOLUNTEER FIRE DEPARTMENT	1
STENNIS SPACE CENTER/JOHNSON CONTROLS	1
STONE COUNTY FIRE COORDINATOR	1
STONE COUNTY SHERIFF'S DEPARTMENT	9
STONEWALL VOLUNTEER FIRE DEPARTMENT	23
STREET VOLUNTEER FIRE DEPARTMENT	6
STRINGER VOLUNTEER FIRE DEPARTMENT	11
STRONG HOPE VOLUNTEER FIRE DEPARTMENT	17
STUDENT/NOT WITH CODED DEPARTMENT	8
STURGIS/DIST. 4 VOLUNTEER FIRE DEPARTMENT	3
SUMMIT VOLUNTEER FIRE DEPARTMENT/PIKE COUNTY	27
SUMRALL VOLUNTEER FIRE DEPARTMENT	2
SUNFLOWER COUNTY EMA	1
SUNFLOWER COUNTY FIRE COORDINATOR	1



2018 PARTICIPATION REPORT BY ORGANIZATION (Cont.)

Organization Name	Student Count
SUNFLOWER COUNTY SHERIFF'S DEPARTMENT	1
SUNFLOWER VOLUNTEER FIRE DEPARTMENT	1
SUNFLOWER VOLUNTEER FIRE DEPARTMENT/STONE COUNTY	1
SUNNYHILL VOLUNTEER FIRE DEPARTMENT	9
SUNRISE VOLUNTEER FIRE DEPARTMENT	18
SUQUALENA VOLUNTEER FIRE DEPARTMENT	12
SYLVA RENA VOLUNTEER FIRE DEPARTMENT/YALOBUSHA COUNTY	4
SYLVARENA VOLUNTEER FIRE DEPARTMENT/SMITH COUNTY	10
TALLAHATCHIE COUNTY FIRE COORDINATOR	1
TAMINCO	55
TASK FORCE 1 - MISSISSIPPI	32
TASK FORCE 2 - MISSISSIPPI	14
TASK FORCE 3 - MISSISSIPPI	9
TATE & LYLE	24
TATE COUNTY DISTRICT 1 FIRE DEPARTMENT	16
TATE COUNTY FIRE COORDINATOR	1
TATE COUNTY SHERIFF'S DEPARTMENT	1
TAYLORSVILLE VOLUNTEER FIRE DEPARTMENT	18
TERRY VOLUNTEER FIRE DEPARTMENT	3
THAXTON VOLUNTEER FIRE DEPARTMENT	4
THE CHEMOURS COMPANY	41
THE DOW CHEMICAL COMPANY	2
THEADVILLE VOLUNTEER FIRE DEPARTMENT	19
THORN VOLUNTEER FIRE DEPARTMENT	10
THREE MILE CORNER VOLUNTEER FIRE DEPARTMENT	3
TIBBEE VOLUNTEER FIRE DEPARTMENT/CLAY COUNTY #200	5
TIE PLANT VOLUNTEER FIRE DEPARTMENT	17
TILDEN-NEW SALEM FIRE DEPARTMENT	32
TIPPAH COUNTY FIRE COORDINATOR	1
TISHOMINGO COUNTY FIRE COORDINATOR	2
TISHOMINGO COUNTY SHERIFF'S DEPARTMENT	1
TISHOMINGO FIRE DEPARTMENT	1
TOGUS VETERANS AFFAIRS HEALTHCARE SYSTEM	1
TOOMSUBA VOLUNTEER FIRE DEPARTMENT	4
TOPEKA/DISTRICT 3 VOLUNTEER FIRE DEPARTMENT	2
TRI-COMMUNITY VOLUNTEER FIRE DEPARTMENT/MARION COUNTY	57
TRI-COMMUNITY VOLUNTEER FIRE DEPARTMENT/YAZOO COUNTY	3
TROY-WOODLAND VOLUNTEER FIRE DEPARTMENT	4
TUCKER VOLUNTEER FIRE DEPARTMENT	4
TUNICA COUNTY SHERIFF'S DEPARTMENT	6
TUNICA VOLUNTEER FIRE DEPARTMENT	55
TUPELO AIRPORT AUTHORITY	6
TUPELO FIRE DEPARTMENT	91



2018 PARTICIPATION REPORT BY ORGANIZATION (Cont.)

Organization Name	Student Count
TUSCALOOSA FIRE DEPARTMENT	2
TUTWILER VOLUNTEER FIRE DEPARTMENT	5
TWIN CREEK VOLUNTEER FIRE DEPARTMENT	2
TYLERTOWN VOLUNTEER FIRE DEPARTMENT	4
UNA VOLUNTEER FIRE DEPARTMENT/CLAY COUNTY #400	5
UNCODED DEPARTMENT OR INDUSTRY	35
UNION CHURCH VOLUNTEER FIRE DEPARTMENT	8
UNION COUNTY FIRE TRAINING OFFICER	1
UNION VOLUNTEER FIRE DEPARTMENT/CHOCTAW COUNTY	2
UNION VOLUNTEER FIRE DEPARTMENT/JONES COUNTY	1
UNION VOLUNTEER FIRE DEPARTMENT/LEE COUNTY	8
UNION VOLUNTEER FIRE DEPARTMENT/NEWTON COUNTY	16
UNION VOLUNTEER FIRE DEPARTMENT/PANOLA COUNTY	4
UNION-FELLOWSHIP VOLUNTEER FIRE DEPARTMENT	2
UNIVERSITY AT ALBANY, SUNY	1
UNIVERSITY OF MS MEDICAL CENTER	1
UNIVERSITY OF MS / OXFORD	6
UNIVERSITY OF MS POLICE DEPARTMENT	6
UTICA VOLUNTEER FIRE DEPARTMENT	15
VALLEY HILL VOLUNTEER FIRE DEPARTMENT	1
VARDAMAN VOLUNTEER FIRE DEPARTMENT	4
VAUGHN VOLUNTEER FIRE DEPARTMENT	2
VELMA VOLUNTEER FIRE DEPARTMENT	7
VERONA FIRE DEPARTMENT	4
VICKSBURG FIRE DEPARTMENT	192
VICKSBURG-WARREN 911	18
VIMVILLE VOLUNTEER FIRE DEPARTMENT	20
WALLS FIRE DEPARTMENT	15
WALTERS VOLUNTEER FIRE DEPARTMENT	8
WALTHALL COUNTY 4TH DIST VOLUNTEER FIRE DEPARTMENT	8
WALTHALL COUNTY 3RD DISTRICT FIRE DEPARTMENT	1
WALTHALL COUNTY SHERIFF'S DEPARTMENT	6
WARD VOLUNTEER FIRE DEPARTMENT	2
WARREN COUNTY FIRE SERVICE	25
WARREN COUNTY SHERIFF'S DEPARTMENT	4
WATER VALLEY FIRE DEPARTMENT	13
WATSON VOLUNTEER FIRE DEPARTMENT	21
WAVELAND FIRE DEPARTMENT	4
WAYNE COUNTY CENTRAL FIRE STATION	29
WAYNE COUNTY EMERGENCY MANAGEMENT DISTRICT	1
WAYNESBORO FIRE DEPARTMENT	4
WEIR VOLUNTEER FIRE DEPARTMENT	2
WENASOGA VOLUNTEER FIRE DEPARTMENT	1



2018 PARTICIPATION REPORT BY ORGANIZATION (Cont.)

Organization Name	Student Count
WEST HANCOCK VOLUNTEER FIRE DEPARTMENT	3
WEST HARRISON VOLUNTEER FIRE DEPARTMENT	4
WEST HINDS VOLUNTEER FIRE DEPARTMENT	2
WEST MADISON FIRE DISTRICT	1
WEST POINT FIRE DEPARTMENT	8
WEST UNION VOLUNTEER FIRE DEPARTMENT	2
WESTLAKE CHEMICALS	1
WHEELER FRANKSTOWN VOLUNTEER FIRE DEPARTMENT	17
WHYNOT VOLUNTEER FIRE DEPARTMENT	1
WIGGINS FIRE DEPARTMENT	6
WINONA FIRE DEPARTMENT	23
WINSTON COUNTY FIRE COORDINATOR	3
WINSTON COUNTY SHERIFF'S DEPARTMENT	3
WOODLAND VOLUNTEER FIRE DEPARTMENT	3
WREN VOLUNTEER FIRE DEPARTMENT	4
WYATTE-CHULAHOMA VOLUNTEER FIRE DEPARTMENT	9
YALOBUSHA COUNTY SHERIFF'S DEPARTMENT	1
YAZOO CITY FIRE DEPARTMENT	71
YAZOO COUNTY DISTRICT 3 VOLUNTEER FIRE DEPARTMENT	10
ZETUS VOLUNTEER FIRE DEPARTMENT	21



“Making A
Difference
When It Matters
The Most”

