

# MISSISSIPPI STATE FIRE ACADEMY ANNUAL REPORT FY 2020



A DIVISION OF THE MISSISSIPPI INSURANCE DEPARTMENT



# Mississippi State Fire Academy Advisory Board

President of the  
Mississippi Fire Chiefs Association  
Chief Ruben Brown

President of the  
Mississippi Fire Fighters Association  
Chief John Pope

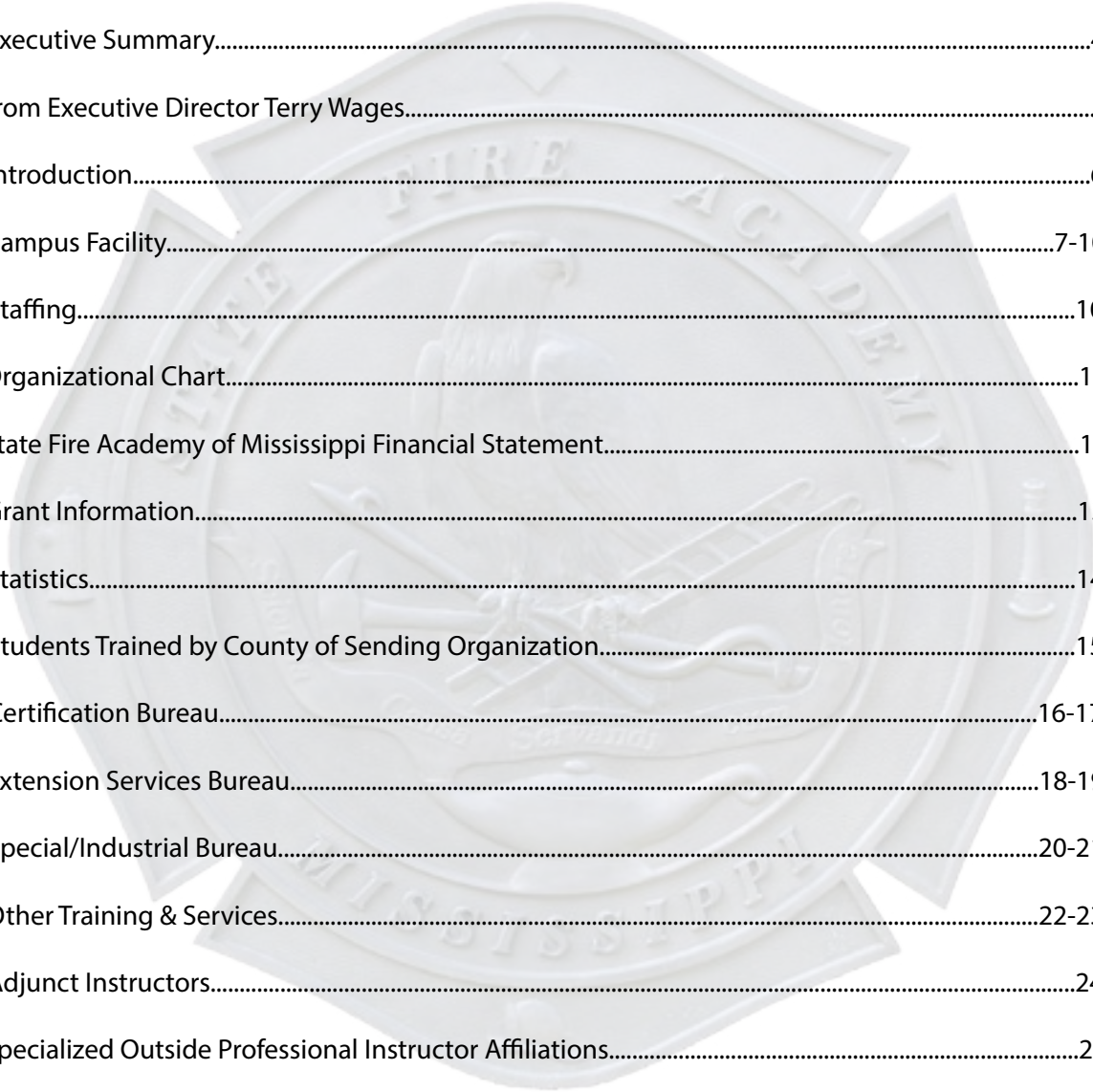
State Fire Marshal’s Office  
Chief Deputy Ricky Davis

President of the  
Mississippi Association of Supervisors  
Appointee  
Mr. Brandon Grissom

President of the  
Mississippi Municipal League  
Mayor Billy Hewes

Manager of the  
State Rating Bureau  
Mr. Joe Shumaker

# Index



Advisory Board.....	2
Index.....	3
Executive Summary.....	4
From Executive Director Terry Wages.....	5
Introduction.....	6
Campus Facility.....	7-10
Staffing.....	10
Organizational Chart.....	11
State Fire Academy of Mississippi Financial Statement.....	12
Grant Information.....	13
Statistics.....	14
Students Trained by County of Sending Organization.....	15
Certification Bureau.....	16-17
Extension Services Bureau.....	18-19
Special/Industrial Bureau.....	20-21
Other Training & Services.....	22-23
Adjunct Instructors.....	24
Specialized Outside Professional Instructor Affiliations.....	25
Organizational Affiliates.....	26
FY 2020 Participation Report by Type of Program.....	27-31
FY 2020 Participation Report by Organization.....	32-46





It is with great pleasure that I present to you the FY2020 Annual Report of the Mississippi State Fire Academy. Two thousand twenty has been a challenging year for our agency and the entire state. Nevertheless, this year has been marked with significant accomplishments that continue to promote our commitment to excellence and our dedication to our state fire service.

We would like to thank you for your continued support of the fire service in the State of Mississippi and the State Fire Academy as we continue to move forward through the many trials our state and country face as we continue to be one of our nation's best in fire and emergency services training centers.

A handwritten signature in black ink, appearing to read "Terry Wages".

Executive Director

**From Executive Director Terry Wages**

The Mississippi State Fire Academy has been the foundation of fire and emergency services training for 45 years, providing the best available training and education to our state's 16,000 plus firefighters. As with any professional service, the fire service has grown and evolved into systems of mitigation and application of skills that transforms our communities toward overall public safety. As such, the how and what of training in our state is also required to evolve in an effort to meet the needs of our state's first responders. By utilizing both on campus, online and field delivery of the 90 plus courses we currently offer, we effectively reach approximately 15,000 students annually. These students make up response systems from volunteer, career and industry departments all across our state and nation.

Not uncommon to transitional education, our methods of course delivery require new and innovative ways that connect to students and provide an educational experience conducive to meet the responsibilities of public safety, while maintaining consistency in standards of training. This is ever more evident with adjustments necessary while dealing with the COVID-19 pandemic. Technology through online course delivery and application of hybrid programs, MSFA continues to offer a firm development platform that ensures adequate standards of training throughout our state.

Notwithstanding, increasing student contact and course delivery cannot maintain efficiency in effort without simultaneously promoting facility growth. Classroom space, dormitory availability and staffing remains a high priority within our overall vision of fire and emergency services training. Important to that success is our ability to evenly distribute and prioritize teaching capabilities that meet and exceed the expectation placed upon those we so passionately represent.

In addition, our commitment to training and education parallels a concerted effort to promote fire prevention and life safety throughout our state. By partnering with our sister agency, Mississippi Fire Marshal's Office, the message of fire prevention and life safety can be planned and delivered to our state citizens with consistency in message and success in outcome. By striving to reduce fire deaths in our state we can effectively provide our citizens with highly skilled responders that are equally knowledgeable about hazard mitigation and fire prevention.

The Mississippi State Fire Academy remains committed to providing training and educational excellence that is certain to "make a difference when it matters the most."





Introduction

**State Fire Academy Mission Statement**

To serve the Mississippi Fire Service Community and the World by providing quality education and training in fundamental and advanced skills to save lives and property.  
“Making A Difference When It Matters The Most!”

**Enabling Legislation**

MS Code Annotated Section 45-11-7:

The State Fire Academy was created for the purpose of training and education of persons engaged in municipal, county and industrial fire protection.

The Academy is officially designated as the agency of this state to conduct training for fire personnel on a statewide basis to all duly constituted fire departments.

MS Code Annotated Section 45-11-5:

Creation of a separate account known as the “State Fire Academy Fund” for the deposit of a tax of one-half of one percent (1/2 of 1%) of the gross premium receipts of fire insurance policies levied in the state.

Senate Bill 2362 of the 2016 Regular Legislative Session:

The above legislation changed the direction of the funding received by the Fire Academy to go to the state general fund effective July 1, 2016, in addition to diverting all cash in the account to the state general fund.

MS Code Annotated Section 45-11-7:

The Academy is designated as a division (sub agency) of the Insurance Department.

MS Code Annotated Section 45-11-203:

Within one year of employment, all paid full time fire fighters shall be certified as completing the mandatory training requirements administered by the State Fire Academy.

MS Code Annotated Section 83-1-39:

Requires one member of the sheriff’s department to be the county fire investigator and to attend training at the State Fire Academy in arson investigation.

**Philosophy**

The State Fire Academy is committed and responsible for the training and education of personnel engaged in municipal, county and industrial fire protection. This student body consists of career, volunteer and industrial fire personnel. The Academy has three training areas, which are 1) Certification Services 2) Extension Services and 3) Industrial and Special Services, which all focus on the Academy’s only function, which is training. All other areas support the staff and students of these training areas.

The Academy’s philosophy is to deliver quality training and instruction to the fire service/emergency response personnel of the State, while adhering to high ethical standards, promoting cooperation among staff with efficiency and integrity in their work while representing the Academy in a professional, courteous, and helpful manner at all times, and safeguarding the assets of the State. The Academy is committed to providing excellent service to its customers by providing training based on National Fire Protection Association (NFPA) standards as well as specialized courses not addressed by NFPA.

**Statewide Goal and Benchmark**

**Public Safety and Order**

To protect the public’s safety-by providing training to first responders/emergency responders.

The training students receive from the Academy provides them the skills necessary to save lives and property, which will in turn, lower the insurance fire rating which determines the premium rates on business and homeowner’s insurance.

Campus Facility:

Construction began in 1974, on the Academy campus in Rankin County, Mississippi. The campus is currently located on approximately 112 acres with more than twenty buildings. Courses are offered to students on or off-campus. Course length can vary from one hour to seven weeks. If on-campus, students may elect to stay in the dormitory, which has seventy-five beds, and they are provided two meals a day in the cafeteria. We currently have seven classrooms, and a dedicated student computer lab/library, in addition to the exercise area for students in the dormitory. Multiple training areas on campus include the following:



A Trench Rescue and Emergency Shoring Prop consists of approximately seventy feet of space for practice in emergency shoring techniques and to allow several scenarios for rescue operations. The prop was a generous donation of equipment, labor, and material from the Associated General Contractors of Mississippi-Municipal Contractors Division. The value of the prop is estimated at a quarter of a million dollars.



The Fire Research Building simulates a three-story residential structure with an attic, and a commercial structure with a basement. The building contains over 4,000 square feet of training space and is equipped with five computer controlled fire/smoke rooms with liquid propane gas fueled fire simulators, a Class A burn room, and a prop that simulates a couch fire with flashover capabilities. A four (4) story drill tower is attached to the burn area.



The original Burn Building has four levels and simulates residential and commercial buildings. This building is currently being utilized as a self contained breathing apparatus (SCBA) training area and collapse rescue training building. The SCBA training area utilizes mazes and artificial smoke for training. The collapse rescue area of the building simulates collapsed ceilings, walls, and floors.



The five-story drill tower provides opportunities for high-rise ladder, rope and firefighting operations. In addition to this tower, there is a communications tower erected for training high angle rescue purposes.





The live burn area consists of five large concrete pads as well as one 5,000 square foot airliner fuselage flammable liquid/LP gas burn prop designed specifically to prevent environmental contamination. These training areas include: a fifty foot flowing fuel fire (LP gas Christmas tree fire); LP gas tank fire; pump seal fire; twenty foot vertical tank fire with exposures; horizontal tank fire with an exposed small tank truck; and a three story evolution simulating a chemical processing plant fire.



The hazardous materials training site consists of a large train derailment simulation with eleven cars.



Two lakes are on campus. One is forty feet deep and is utilized for dive rescue training. The other lake is used as a water source for pump testing fire apparatus.



The confined space training site has over 9,000 cubic feet of enclosed area and a forty-five foot tower. The underground area includes vents and drains with several emergency entries/exits.

A forty-one by fourteen foot water vessel is dry docked for the instruction of offshore personnel.



An arson lab is used to build real life room-like structures with furniture to train in arson detection.



Five aircraft simulators are used in the instruction of aircraft rescue training. A landing gear simulator is at this site along with a side-wall aircraft section used in training. We are recognized by the Federal Aviation Administration as an approved training site for this region. Students from all over the United States attend these courses for the required annual training to be in compliance with the FAA regulations.



The Fire Education and Safety Auditorium will seat up to 300 people and is used for graduations and large meetings of the fire service.



New Classroom Building: Two of the classrooms are theatre style that will seat 50 each, while the other two classrooms are traditional with seating capacity of 30 each. Each of the classrooms has the latest technology for course instruction and wireless capabilities.

**Future Enhancements:**



Progress is being made on the construction of a new training prop, Structural Collapse Rescue. The prop was designed by staff members and most work is being performed by staff. This prop will consist of material to simulate a collapsed building consisting of concrete, masonry, brick, wood and metal. The training will consist of rescue personnel digging, bracing, shoring, and removing victims of the collapse. Heavy machinery such as bulldozers, backhoes, and cranes will be utilized to remove the debris for the safe rescue training.



The National Natural Gas Association, along with Mississippi 811, and the Mississippi Public Service Commission and several energy companies, have begun the construction process for erecting the “Mississippi Safety City” on the Academy campus. The Mississippi Safety City is a one-of-a-kind, small scale city encompassing two acres that will serve as a training facility for natural gas operators, emergency response personnel, and industrial technicians. The city will contain homes, streets, streetlights and natural gas pipelines. Training will include classroom settings as well as real life simulations of natural gas eruptions and responses, and inspection techniques of gas systems. The estimated cost of this project is one million dollars, which will be donated by the sponsors.

Originally, the Academy was one hundred percent (100%) special funded through an insurance premium tax on insurance policies sold in the state, and course collection fees. Senate Bill 2362 of the 2016 Regular Legislative Session changed the direction of the funding received by the Fire Academy to go to the state general fund effective July 1, 2016, in addition to diverting all cash in the account to the state general fund. Additionally, grant funding is requested and often times received for training emergency response personnel on a statewide basis at little to no cost to the departments/counties.

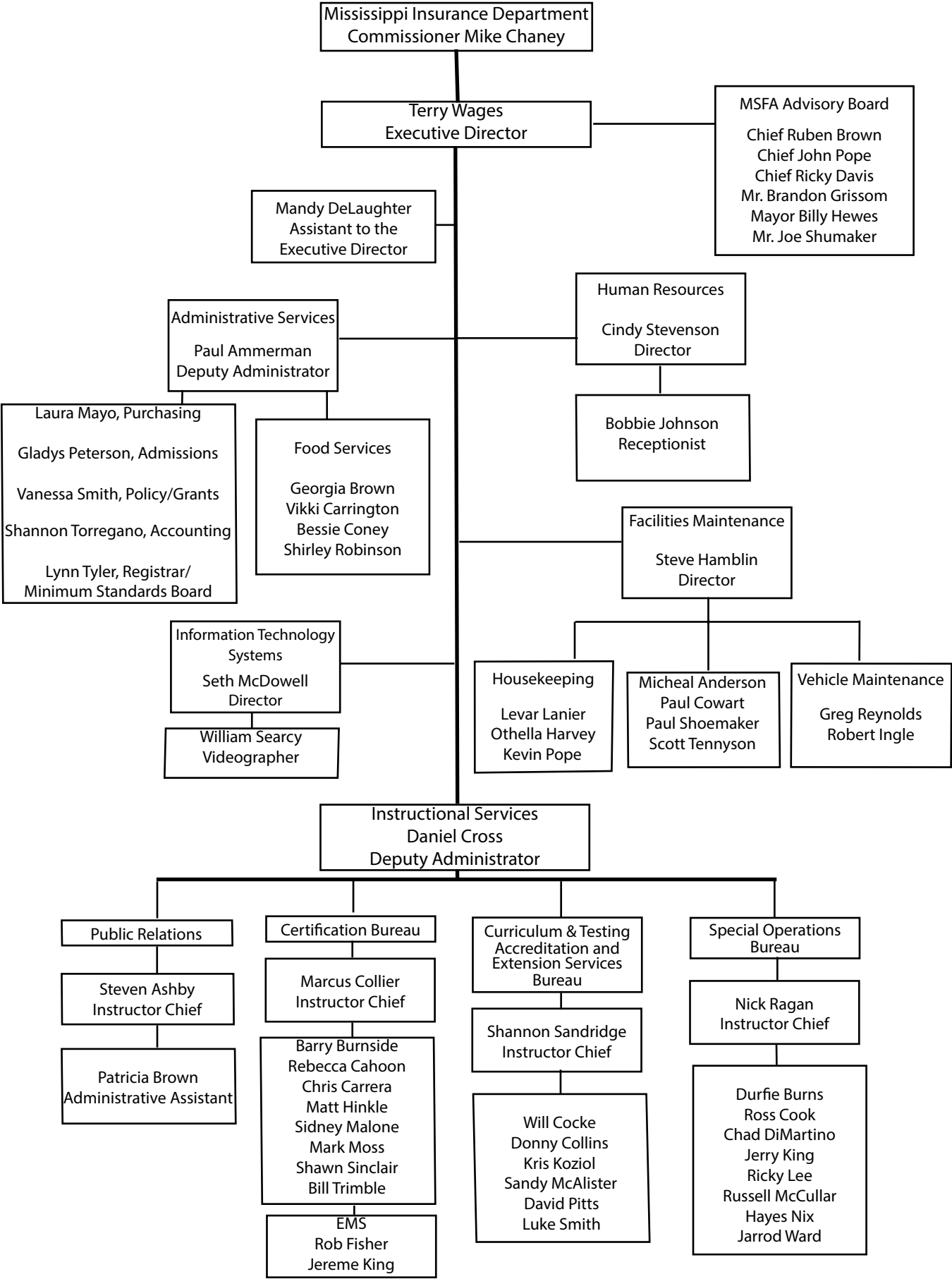
**Staffing:**

The Academy operates the facility with sixty-three (63) staff members in the following areas:

- Administrative
- Human Resources
- Minimum Standards and Certification Board Secretary
- Information Technology and Videography
- Building, Maintenance, and Vehicle
- Housekeeping
- Cafeteria
- Curriculum/Accreditation and Public Relations
- Instructional Bureaus–Certification, Industrial/Special, Extension Services

The Office of Administrative Services is responsible for the day to day operations of the Academy, student training records and course registration. Human Resources is responsible for staff recruitment, staff training and all employee benefits. The Secretary for the Minimum Standards Board is responsible for all functions related to Board activities. The Informational Technology and Videography Bureau is responsible for all computer systems for staff, the Learning Resource Center for students’ use, custom programming for staff, and videos of class training. The Building, Maintenance, and Vehicle Bureau is responsible for maintaining and repairing all of the agency buildings, equipment, and training props as well as all vehicles owned by the Academy, including Fire Apparatus. Housekeeping is responsible for maintaining the cleanliness of all the buildings, checking students into the dormitory, issuing linens, cleaning rooms, and assisting in grounds keeping when necessary. The Cafeteria Staff is responsible for serving two meals a day to students. The Instructional Bureaus are responsible for all areas of training offered while the Curriculum/Accreditation and Public Relations Bureau is responsible for course accreditation, testing, tours, fire education safety seminars, and publications.

**ORGANIZATIONAL CHART**





Fund Balance Financial Statement  
July 1, 2019 to June 30, 2020

Grant Information  
Fiscal Year 2020

State Appropriations House Bill 1589:	\$5,330,230
Grant Funding:	
Sub Grant Funds-Passed through Other State Agencies and Federal Grant Funds-Direct	\$1,299,660
Total Appropriations and Grant Funding:	\$5,528,481

Expenses:	
Salaries, Wages, Fringe Benefits	\$3,926,975
Travel	\$ 24,046
Contractual Services	\$ 477,958
Commodities	\$ 600,008
Equipment Purchases	\$ 224,973
Vehicles	\$ -0-
Resale Merchandise	\$ 51,618
Total Expenses:	\$5,305,578

Unused General Funding as of June 30, 2020:	\$ 193,497
Unused Federal Grant Funding as of June 30, 2020:	\$1,329,066

MS Code Annotated Section 45-11-5:

Creation of a separate account known as the "State Fire Academy Fund" for the deposit of a tax of one-half of one percent (1/2 of 1%) of the gross premium receipts of fire insurance policies levied in the state.

Senate Bill 2362 of the 2016 Regular Legislative Session:

The above legislation changed the direction of the funding received by the Fire Academy to go to the state general fund effective July 1, 2016, in addition to diverting all cash in the account to the state general fund.

MS Code Annotated Section 45-11-7 (1):

The State Fire Academy was created for the purpose of training and education of persons engaged in municipal, county and industrial fire protection.

The Academy is officially designated as the agency of this state to conduct training for fire personnel on a statewide basis to all duly constituted fire departments.

The Commissioner of Insurance may establish and charge reasonable fees for the training programs and other services provided by the Academy.

The Academy was able to receive grant funds directly from the Federal Aviation Administration. This grant will be utilized to purchase a brand new Airport Rescue Firefighter Crash Truck. Purchase is expected to be completed in FY2022

Grant Funds Received: \$845,000

The Mississippi Office of Homeland Security under the MS Department of Public Safety, awarded grant funds from the State Homeland Security Program. This grant was utilized for on campus and field delivery programs that have been approved through the Office of Domestic Preparedness. Course offerings include Rope Rescue, Confined Space Rescue, Hazardous Materials Technician, Trench Rescue, and NIMS courses.

Grant Funds Received: \$250,000

Deliveries Offered: 15

Students Participating: 227

The Mississippi Emergency Management Agency awarded grant funds from the Hazardous Materials Emergency Preparedness, under the U S Department of Transportation. This grant was utilized for the delivery of Hazardous Materials Technician I, Hazardous Materials Technician II, Hazardous Materials Awareness/ Operations, and Fire Chemistry.

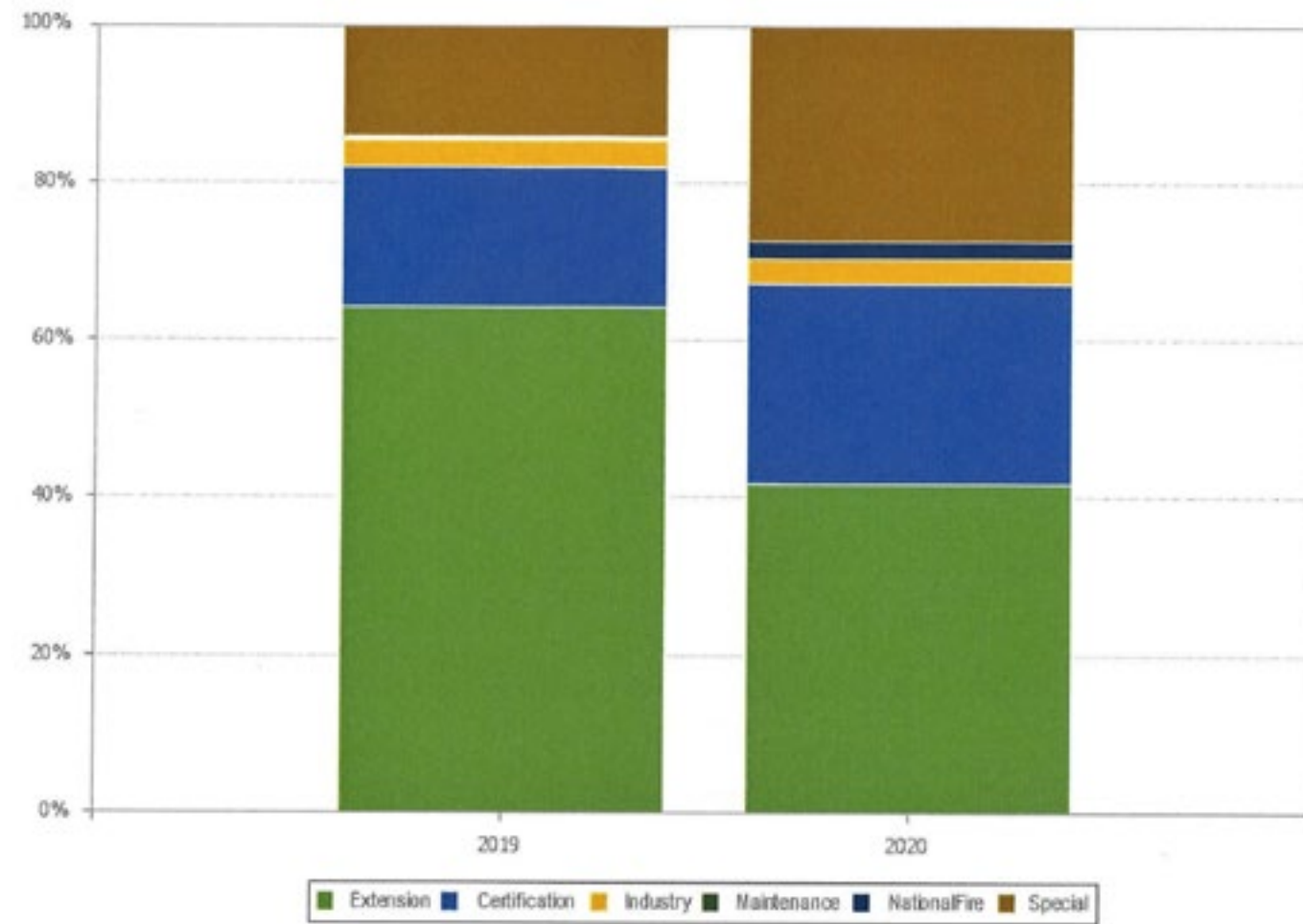
Grant Funds Received: \$204,660

Deliveries Offered: 45

Students Participating: 470

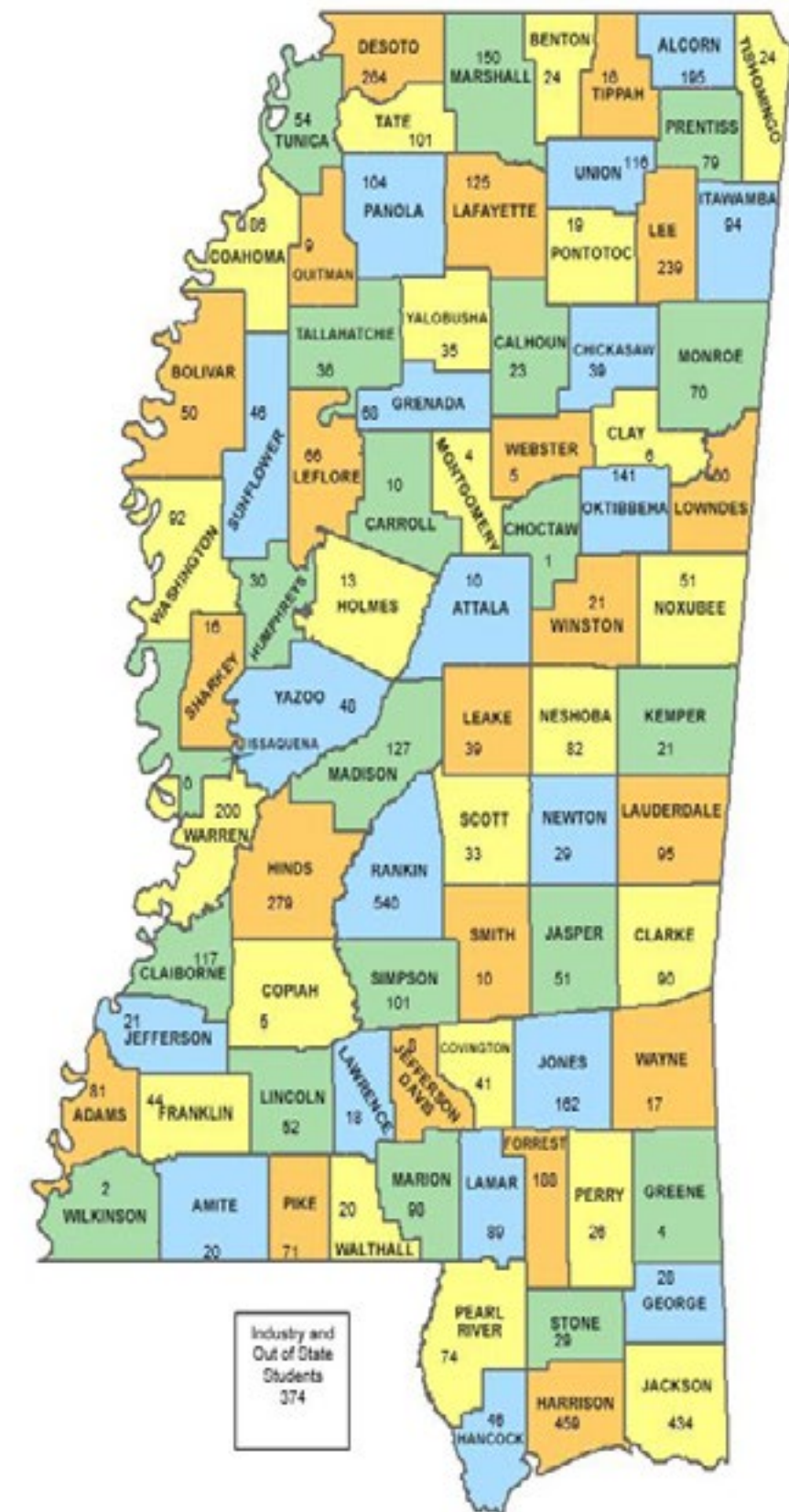


## STUDENTS BY BUREAU



STUDENT NUMBERS	
Total Students	6,573
Total Students Passed	6,015
Total Student Hours	159,558

## STUDENTS TRAINED BY COUNTY OF SENDING ORGANIZATION







## **CERTIFICATION SERVICES BUREAU**

- Courses are designed to provide career, combination, and volunteer fire departments a wide range of programs that conform to National Fire Protection Association (NFPA) standards.
- Most courses have obtained International Fire Service Accreditation Congress (IFSAC) and National Board on Fire Service Professional Qualifications (PROBOARD) accreditation.
- Course deliveries consist of campus, field, contract programs, and distant learning programs.

**Emergency Medical Care**  
**Engine Company Operations**  
**Fire Department Safety Officer 1521**  
**Fire Department Safety Officer 1521 Field Delivery**  
**Fire Fighter 1001-I-II**  
**Fire Fighter 1001-I-II: Field Course**  
**Fire Inspector 1031-I**  
**Fire Inspector 1031-II**  
**Fire Investigator 1033**  
**Fire Officer 1021-I-II**  
**Fire Officer 1021-I-II: Field Course**  
**Fire Officer 1021-1: Online**  
**Fire Officer 1021-II: Online**  
**Fire Service Chaplain**  
**Fire Service Instructor 1041-I-II**  
**Fire Service Instructor 1041-III**  
**Fire Service Instructor 1041-I-II: Field Course**  
**Fire Service Instructor 1041-I: Online**  
**Fire Service Instructor 1041-II: Online**  
**How To Develop And Assist In Fire Fighter Physical Fitness Programs**  
**Mississippi County Fire Investigator**  
**Mississippi County Fire Investigator: Annual-In-Service**  
**Mississippi Executive Fire Officer Program/Fire Officer 1021-III-IV**  
**Truck Company Operations**





## **CURRICULUM & TESTING ACCREDITATION/ EXTENSION SERVICES BUREAU**

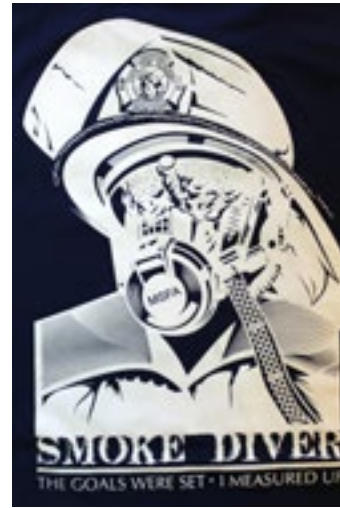
- Most courses are designed to be presented to the volunteer fire fighter.
- Utilizes a cadre' of adjunct instructors to present training programs across the state.
- Administers the National Fire Protection Association (NFPA) 1002 Driver/Operator and National Fire Protection Association (NFPA) 1003 Airport Fire Fighter which hold International Fire Service Accreditation Congress (IFSAC) and National Board on Fire Service Professional Qualifications (PROBOARD) Accreditation.
- Liaison between the Mississippi State Fire Academy and the National Fire Academy.



**Advanced Volunteer Firefighter**  
**Aircraft Rescue & Fire Fighter Refresher**  
**Airport Fire Fighter NFPA-1003**  
**Back-To-Basics: Fire Company Fireground Skills Refresher**  
**Certified Fireground Resource Technician: Modules I-II**  
**Certified Volunteer Driver Operator Levels I-II**  
**Driver/Operator NFPA 1002: Aerial Apparatus Field Evaluation**  
**Driver/Operator NFPA 1002: Pumper Apparatus Field Evaluation**  
**Driver/Operator NFPA 1002: Pumper Apparatus On-Campus Course**  
**Fire Academy For Elected/Public Officials**  
**Fire & Life Safety Educator 1035-I-II-III**  
**Hazardous Materials NFPA 472 Awareness/Operations Module 1-2 (Non-IFSAC/PROBOARD)**  
**Inter-Departmental Courses (15)**  
**Introduction To Aircraft Rescue & Firefighting Techniques**  
**Liquefied Petroleum Gas Tactics & Live Fire Drill**  
**Managing The Rural Emergency Incident**  
**Mississippi Certified Volunteer Fire Fighter I - Module 1**  
**Mississippi Certified Volunteer Fire Fighter I - Module 2**  
**Mississippi Certified Volunteer Fire Fighter II - Module I**  
**Mississippi Certified Volunteer Fire Fighter II - Module 2**  
**Mississippi Chief Fire Officer Designation Program**  
**Mississippi Fire Chief Designation Program**  
**Mississippi Volunteer Fire Officer-I**  
**Mississippi Volunteer Fire Officer-II**  
**National Fire Academy Courses (5)**  
**Passenger Bus Rescue & Incident Management (Field Delivery)**  
**Public Information Officer NFPA 1035**  
**Regional Training Courses (24)**



## **SPECIAL OPERATIONS BUREAU**



- Programs are generally formatted around the subject of industrial incipient firefighting, technical rescue, and hazardous materials response.
- Most courses have obtained International Fire Service Accreditation Congress (IFSAC) and National Board on Fire Service Professional Qualifications (PROBOARD) accreditation.
- Most special course student fees are supported with federal grant funds.
- Specializes in technical programs geared towards fire department training.
- Program delivery consists of on-campus and off-site programs.



**Advanced Rope Rescue Workshop: Wilderness**

**Certified Advanced Rescue Specialist (CARS)**

**Confined Space Rescue Technician**

**Confined Space Rescue Field Delivery: Modules 1-4**

**Fire Service Management-101**

**Firefighter Intervention Rescue Survival Techniques (FIRST)**

**Fireground Leadership**

**Hazardous Materials Awareness And Operations**

**Hazardous Materials Technician Field Delivery**

**Hazardous Materials Technician-I**

**Hazardous Materials Technician-II**

**Incident Management of Hazardous Materials**

**Incipient And Structural Fire Brigade Training Programs: Modules I-V**

**Industrial Fire Fighter Refresher Training**

**Industrial On-Site Training Programs**

**NFA Chemistry Of Hazardous Materials: Fire Chem I**

**Rescue Refresher**

**Rescue Technician**

**Rope Rescue Awareness And Operations**

**Rope Rescue Awareness And Operations-Field Delivery: Modules 1-4**

**Smoke Diver**

**Surface Water & Swiftwater Rescue Technician**

**Tower Rescue Technician**

**Trench Rescue Technician**

**Vehicle Extrication & Rescue Technician**



## OTHER EXTENSION SERVICES



## FIRE PUMP REBUILDING CLASS



## Fire Apparatus Testing

## PUBLIC RELATIONS BUREAU



The MSFA takes great pride in not only offering some of the best training in the country/world, but providing the best customer service to all 1st responders and to the general public of the state of Mississippi when visiting the MSFA. Not only do we promote the many courses offered here on a state and national level, we also promote the fire & rescue service at various conferences attended throughout the state, as well as invitations for speaking engagements. We also provide public tours for all ages and walks-of-life, including fire & life safety educational programs on/off campus.

We continue to build partnerships with other entities and companies through their awareness and safety programs. These programs are endorsed and promoted by the MSFA after diligent review of their lesson plans/presentations. This allows vital training to be delivered at your department at no cost.

The MSFA is very dedicated on promoting "MS Turn Your Attention to Fire Prevention" statewide program to bring safety awareness to the general public and help save our fellow Mississippians lives!

All of this in an effort to help keep our Citizens safe, we are here to assist your efforts as well.



The Mississippi State Fire Academy Honor Guard was established in 2008 to serve the fire fighters around the state in their time of need, to help remember and memorialize any fire fighter that serves or served this great state as a token of our appreciation on a state level



Adjunct Instructor Affiliations  
Fiscal Year 2020



The Academy contracted with the following individuals for course deliveries during the fiscal year.

- |                    |                    |
|--------------------|--------------------|
| Joseph Abercrombie | Tommy Malone       |
| Joshua Abercrombie | William S. Malone  |
| David Adams        | Curtiss Marbury    |
| Nathan Bell        | Justin Miller      |
| Justin Bouler      | Jerry Mills        |
| Gerald Briggs      | Vernon Morris      |
| Charles Brown      | Mark Moss          |
| Finley Brown       | Robert Parker      |
| Richard Bryant     | Leland Reed        |
| Robert Bush        | Nicholas Rivera    |
| Barry Collins      | Norris Robbins     |
| Phillip Cummings   | Michael Rutherford |
| Joshua Davis       | Scott Sanko        |
| Calvin Devore      | Lonagcio Smith     |
| Scott Dubuisson    | Raleigh Sprouse    |
| Juan Garza         | Charles Tate       |
| Michael Gettinger  | Scott Tennyson     |
| Ricky Gibens       | Steven Thomas      |
| John Grimes        | Michael Watts      |
| Patrick Homan      | Jerry Whirley      |
| George Horn        | Mark Whiteside     |
| Cody Keys          | Samuel Winchester  |
| Robert J. Kramer   | Charles Yarbrough  |

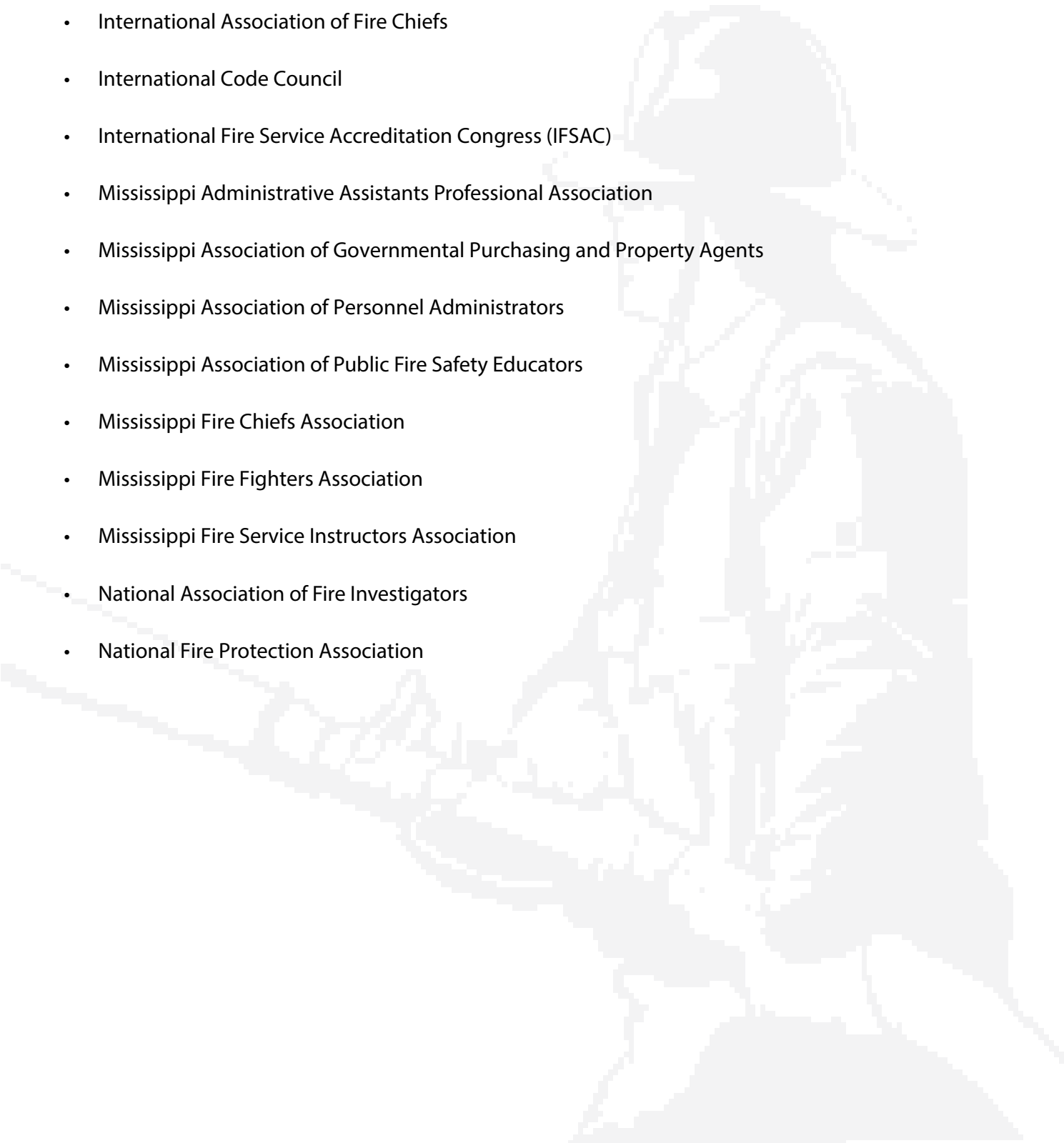
Specialized Outside Professional Instructor Affiliations  
Fiscal Year 2020

The Academy contracted with the following professional instructors/organizations utilizing grant funding, for course deliveries during the fiscal year.

- Steve Bardwell
- Andrew Byrnes
- Melvin Byrne
- Carson Consulting
- Clark Consulting
- Phillip Davis
- David Matthew
- Johnny Purvis
- Jeannie Vaughn

# Organizational Affiliations

Much of the development and improvement of a successful training program comes as the direct result of dialogue established with other persons in the business. The members of the State Fire Academy staff are affiliated with many related organizations and thus have opportunities to share ideas. Following is a list of organizations in which staff members are involved.

- International Association of Fire Chiefs
  - International Code Council
  - International Fire Service Accreditation Congress (IFSAC)
  - Mississippi Administrative Assistants Professional Association
  - Mississippi Association of Governmental Purchasing and Property Agents
  - Mississippi Association of Personnel Administrators
  - Mississippi Association of Public Fire Safety Educators
  - Mississippi Fire Chiefs Association
  - Mississippi Fire Fighters Association
  - Mississippi Fire Service Instructors Association
  - National Association of Fire Investigators
  - National Fire Protection Association
- 



## 2020 PARTICIPATION REPORT BY TYPE OF PROGRAM

### Certification Services Bureau

Course Name	Student Count
CPAT EXAM	184
DRIVER/OPERATOR NFPA 1002 PUMPER APPARATUS	12
EMERGENCY MEDICAL RESPONDER	18
ENGINE COMPANY OPERATIONS	20
FIRE DEPARTMENT SAFETY OFFICER 1521	16
FIRE DEPARTMENT SAFETY OFFICER 1521 FIELD DELIVERY	16
FIRE FIGHTER 1001-I-II	203
FIRE FIGHTER 1001-I-II FIELD DELIVERY	54
FIRE INSPECTOR 1031-I	17
FIRE INSPECTOR 1031-II	15
FIRE OFFICER 1021-I ON-LINE	1
FIRE OFFICER 1021-I	18
FIRE OFFICER 1021-I-II	5
FIRE OFFICER 1021-I-II FIELD DELIVERY	17
FIRE SERVICE INSTRUCTOR 1041-I ON-LINE	18
FIRE SERVICE INSTRUCTOR 1041-1-I-II	52
FIRE SERVICE INSTRUCTOR 1041-1-I-II FIELD DELIVERY	21
FIRE SERVICE INSTRUCTOR 1041-II	8
HAZARDOUS MATERIALS NFPA 1072 AWARENESS/OPERATIONS	217
HAZARDOUS MATERIALS NFPA 1072 AWARENESS/OPERATIONS FIELD DELIVERY	44
HAZARDOUS MATERIALS NFPA 1072 AWARENESS/OPERATIONS ON-LINE	66
INDUSTRIAL REFRESHER FIRE FIGHTER TRAINING	10
IS 100: INTRODUCTION TO ICS	207
IS 200: ICS FOR SINGLE RESOURCE AND INITIAL ACTIONS	207
MS CERTIFIED VOLUNTEER FIRE FIGHTER II: MODULE 2	10
MISSISSIPPI COUNTY FIRE INVESTIGATOR: ANNUAL IN-SERVICE	28
MS EXECUTIVE FIRE OFFICER 1021-III-IV	12
MS EXECUTIVE FIRE OFFICER 1021-III-IV MODULE 3	12
TACTICAL COMBAT CASUALTY CARE	28
TOWER RESCUE TECHNICIAN	14





## 2020 PARTICIPATION REPORT BY TYPE OF PROGRAM

### Extension Services Bureau

Course Name	Student Count
AIRCRAFT RESCUE FIRE FIGHTER REFRESHER TRAINING (3-HOUR)	228
AIRPORT FIRE FIGHTER	24
APPARATUS PUMP OPERATOR-MODULE 1: BASICS	134
APPARATUS PUMP OPERATOR-MODULE 2: MWS	21
AUTOMOBILE EXTRICATION	320
BASIC AERIAL OPERATIONS: ANNUAL REFRESHER	18
CERTIFIED FIREGROUND RESOURCE TECHNICIAN	2
CERTIFIED FIREGROUND RESOURCE TECHNICIAN - MODULE 1	28
CERTIFIED FIREGROUND RESOURCE TECHNICIAN - MODULE 2	24
CERTIFIED VOLUNTEER DRIVER OPERATOR: LEVEL I	6
CERTIFIED VOLUNTEER DRIVER OPERATOR: LEVEL II	9
CPAT EXAM	129
DELIVERING EXCELLENT CUSTOMER SERVICE	42
DRIVER/OPERATOR NFPA 1002: AERIAL APPARATUS	12
DRIVER/OPERATOR NFPA 1002: PUMPER APPARATUS	61
DRIVER/OPERATOR NFPA 1002: PUMPER APPARATUS FIELD DELIVERY	63
DRIVING SIMULATOR TRAINING	18
ELECTRICAL HAZARDS ON THE EMERGENCY SCENE	110
ENGINE COMPANY OPERATIONS - PART 1	37
ENGINE COMPANY OPERATIONS - PART 2	17
EVACUATION PLANNING STRATEGIES & SOLUTIONS	23
FIRE ATTACK FOR THE MODERN ERA	220
FIRE FIGHTER CANCER & CANCER SURVIVAL AWARENESS (12-HOUR)	22
FIRE FIGHTER CANCER & CANCER SURVIVAL AWARENESS (4-HOUR)	22
FIRE FIGHTER CANCER AWARENESS & SURVIVAL	54
FIRE FIGHTER ESSENTIAL SKILLS - I	111
FIRE FIGHTER ESSENTIAL SKILLS - II	69
FIRE SERVICE RESCUE 101	111
FIREGROUND SUPPORT OPERATIONS	49
GRAIN BIN EXTRICATION OPERATIONS	96
HAZARDOUS MATERIALS AWARENESS/OPERATIONS	73
HAZARDOUS MATERIALS AWARENESS/OPERATIONS-MODULE 1	79
HAZARDOUS MATERIALS: INITIAL RESPONSE	35
HOT LINE DEMO: ZERO BY CHOICE	18
INDUSTRIAL FIRE FIGHTER TRAINING	9
LEADERSHIP IN SUPERVISION: CREATING ENVIRONMENTS FOR PROFESSIONALS	19
LEADERSHIP IN SUPERVISION: PERSPECTIVES IN THINKING	31
LEGAL ISSUES MINIMIZING EXPOSURE	29
MANAGING THE RURAL EMERGENCY INCIDENT	25
MISSISSIPPI CERTIFIED VOLUNTEER FIRE FIGHTER [NFPA 1001-BASED]	16
MISSISSIPPI CERTIFIED VOLUNTEER FIRE FIGHTER I	246
MISSISSIPPI CERTIFIED VOLUNTEER FIRE FIGHTER II: MODULE I	114
MISSISSIPPI FIRE FIGHTER SAFETY	16



## 2020 PARTICIPATION REPORT BY TYPE OF PROGRAM

### Extension Services Bureau (Cont.)

Course Name	Student Count
MISSISSIPPI FIRE FIGHTER SAFETY	26
MISSISSIPPI VOLUNTEER FIRE FIGHTER I MODULE I CLASSROOM	259
MISSISSIPPI VOLUNTEER FIRE FIGHTER 1: UP-GRADE-MODULE 1	19
MISSISSIPPI VOLUNTEER FIRE OFFICER-I	20
MISSISSIPPI CERTIFIED VOLUNTEER FIRE FIGHTER II: MODULE 2	98
MS FIRE PREVENTION SUMMIT	53
MS VOLUNTEER FF-MODULE 1 - 2ND ATTEMPT	18
MSFA 2019 MS FIRE SERVICE TRAINING CONFERENCE	59
MSFA STATE WIDE IN-SERVICE TRAINING	100
NFA: DECISION MAKING FOR INITIAL COMPANY OPERATIONS	21
NFA: IS 100: INTRODUCTION TO ICS	13
NFA: IS 200: ICS FOR SINGLE RESOURCE AND INITIAL ACTIONS	3
NFA: LEADERSHIP IN SUPERVISION: FRAMEWORKS TO SUCCESS	15
NFA: NATIONAL INCIDENT MANAGEMENT SYSTEMS INTRODUCTION	3
NATIONAL INCIDENT MANAGEMENT SYSTEM-INTRODUCTION	10
NATIONAL TRAFFIC INCIDENT MANAGEMENT	15
NATIONAL TRAFFIC INCIDENT MANAGEMENT RESPONDER	11
NATURAL GAS RESPONSE CONSIDERATIONS FOR FIRE DEPARTMENTS	28
NEW FIRE CHIEF III: CONTEMPORARY ISSUES	20
OPERATING EMERGENCY VEHICLES-ANNUAL REFRESHER	11
PASSENGER BUS RESCUE & INCIDENT MANAGEMENT	19
RAPID INTERVENTION TEAMS	107
RESPONSE TO NEW VEHICLE FIRES	26
SEARCH & RESCUE FOR DISASTER RESPONSES	101
STRATEGIES FOR FIRE FIGHTER PERSONAL SUCCESS	53
THE FIRE APPARATUS DRIVER	60
TRAINING, RESPONDING AND RETURNING HOME ALIVE	16
UNDERSTANDING THE ROLE OF THE INCIDENT SAFETY OFFICER	28
VOLUNTEER FIRE FIGHTER INSTRUCTOR ORIENTATION	81



## 2020 PARTICIPATION REPORT BY TYPE OF PROGRAM

### Industrial Services Bureau

Course Name	Student Count
HAZ MAT REFRESHER TRAINING	14
HIGHWAY TRANSPORTATION SPECIALIST	17
INDUSTRIAL REFRESHER FIRE FIGHTER TRAINING (8-HOUR)	175
INDUSTRIAL REFRESHER FIRE FIGHTER TRAINING (24-HOUR)	82
INDUSTRIAL RESCUE REFRESHER (16-HOUR)	11
REFRESHER HAZ MAT TRAINING (16-HOUR)	11
REFRESHER HAZ MAT TRAINING (24-HOUR)	16



## 2020 PARTICIPATION REPORT BY TYPE OF PROGRAM

### Special Services Bureau

Course Name	Student Count
ADVANCED ROPE RESCUE WORKSHOP: WILDERNESS	10
CHLORINE/COMMUNICATIONS WITH THE MEDIA	38
CLANDESTINE LAB REFRESHER	14
CONFINED SPACE RESCUE TECHNICIAN	25
CONFINED SPACE RESCUE MODULE 1	13
CONFINED SPACE RESCUE MODULE 2	13
CONFINED SPACE RESCUE MODULE 3	13
CONFINED SPACE RESCUE MODULE 4	13
DECONTAMINATION/CHEMICAL PROTECTIVE CLOTHING	38
FIRE SERVICE MANAGEMENT 101	17
FIREFIGHTER INTERVENTION RESCUE SURVIVAL TECHNIQUES	70
FIREGROUND LEADERSHIP	51
HAZARDOUS MATERIALS INCIDENT COMMAND	11
HAZARDOUS MATERIALS NFPA 1072: AWARENESS/OPERATIONS	1
HAZARDOUS MATERIALS TECHNICIAN	38
HAZARDOUS MATERIALS TECHNICIAN - I	60
HAZARDOUS MATERIALS TECHNICIAN-II	33
INDUSTRIAL REFRESHER FIRE FIGHTER TRAINING (8-HOUR)	14
NON-BULK CONTAINERS/HIGHWAY CARRIERS/RAIL CARS	38
RESPONDING TO HAZARDOUS MATERIALS INCIDENTS	38
ROPE RESCUE AWARENESS & OPERATIONS	67
ROPE RESCUE I - MODULE 1	77
ROPE RESCUE I - MODULE 2	72
ROPE RESCUE I - MODULE 3	72
ROPE RESCUE I - MODULE 4	72
SBA TOWER RESCUE	7
SMOKE DIVER	47
SOURCES OF ASSISTANCE/HAZ MAT ICS/CHEM. TERMS & DEFINITIONS	38
TOXICOLOGY/MONITORING DEVICES/WEAPONS OF MASS DESTRUCTION	38
TRENCH RESCUE AND EMERGENCY SHORING TECHNICIAN	45
VEHICLE EXTRICATION & RESCUE TECHNICIAN	23
WILDERNESS FIRST AID	12





## 2020 PARTICIPATION REPORT BY ORGANIZATION

Organization Name	Student Count
164 CES/CEF	7
ABEL'S STORE VOLUNTEER FIRE DEPARTMENT	1
ABERDEEN FIRE DEPARTMENT	3
ADAMS COUNTY FIRE SERVICES	12
ADATON/SELF CREEK FIRE DEPARTMENT	1
AGRICOLA VOLUNTEER FIRE DEPARTMENT	1
ALCORN COUNTY FIRE COORDINATOR	1
ALCORN COUNTY FIRE SERVICES	1
ALCORN COUNTY SHERIFF'S DEPARTMENT	1
ALPHABA/COCKRUM/INGRAMS FIRE DEPARTMENT	2
AMITE COUNTY SHERIFF'S DEPARTMENT	3
AMORY FIRE DEPARTMENT	29
ARCOLA VOLUNTEER FIRE DEPARTMENT	4
ARKABUTLA VOLUNTEER FIRE DEPARTMENT	5
ARLINGTON VOLUNTEER FIRE DEPARTMENT/NESHOPA COUNTY	6
ASHLAND VOLUNTEER FIRE DEPARTMENT	9
ATTALA COUNTY CENTRAL FIRE DEPARTMENT	10
BAILEY VOLUNTEER FIRE DEPARTMENT	4
BALDWYN VOLUNTEER FIRE DEPARTMENT	4
BANNER VOLUNTEER FIRE DEPARTMENT/CALHOUN COUNTY	2
BARTAHATCHIE VOLUNTEER FIRE DEPARTMENT	2
BARTON VOLUNTEER FIRE DEPARTMENT/MARSHALL COUNTY	11
BASIN VOLUNTEER FIRE DEPARTMENT	16
BATESVILLE FIRE DEPARTMENT	28
BAY SPRINGS VOLUNTEER FIRE DEPARTMENT	12
BAY ST. LOUIS FIRE DEPARTMENT	19
BAYSIDE PARK VOLUNTEER FIRE DEPARTMENT	1
BEAUMONT VOLUNTEER FIRE DEPARTMENT	5
BEAVER LAKE VOLUNTEER FIRE DEPARTMENT	6
BEAVER MEADOWS VOLUNTEER FIRE DEPARTMENT	5
BEAVERDAM VOLUNTEER FIRE DEPARTMENT	10
BECKER-ATHENS VOLUNTEER FIRE DEPARTMENT	8
BELL SCHOOL HOUSE FIRE DEPARTMENT	2
BELZONI FIRE DEPARTMENT	30
BENCH VOLUNTEER FIRE DEPARTMENT	3
BENNDALE VOLUNTEER FIRE DEPARTMENT	2
BENTON COUNTY SHERIFF'S DEPARTMENT	1
BENTON VOLUNTEER FIRE DEPARTMENT	7
BENTONIA VOLUNTEER FIRE DEPARTMENT	1
BETHEDEN VOLUNTEER FIRE DEPARTMENT	2
BETHEL VOLUNTEER FIRE DEPARTMENT	1
BEULAH HUBBARD VOLUNTEER FIRE DEPARTMENT/NEWTON COUNTY	1
BIG CREEK VOLUNTEER FIRE DEPARTMENT	3



## 2020 PARTICIPATION REPORT BY ORGANIZATION (Cont.)

Organization Name	Student Count
BIGGERSVILLE VOLUNTEER FIRE DEPARTMENT	4
BILOXI FIRE DEPARTMENT	89
BIRMINGHAM RIDGE FIRE PROTECTION DISTRICT	1
BLYTHEVILLE FIRE DEPARTMENT	13
BOLIVAR COUNTY FIRE DEPARTMENT	32
BOONEVILLE FIRE DEPARTMENT	58
BOVINA VOLUNTEER FIRE DEPARTMENT	7
BRANDON FIRE DEPARTMENT	55
BRAXTON VOLUNTEER FIRE DEPARTMENT	6
BRIDGETOWN VOLUNTEER FIRE DEPARTMENT	8
BROOKHAVEN FIRE DEPARTMENT	52
BROOKLYN VOLUNTEER FIRE DEPARTMENT	6
BROOKSVILLE VOLUNTEER FIRE DEPARTMENT	5
BROOME VOLUNTEER FIRE DEPARTMENT	1
BROWNSVILLE VOLUNTEER FIRE DEPARTMENT	1
BRUCE VOLUNTEER FIRE DEPARTMENT	5
BUNKOM HILL/NEW HOPE VOLUNTEER FIRE DEPARTMENT	6
BUREAU OF ALCOHOL, TOBACCO AND FIREARMS	1
BURNSVILLE VOLUNTEER FIRE DEPARTMENT	1
BURTON VOLUNTEER FIRE DEPARTMENT	9
BYHALIA VOLUNTEER FIRE DEPARTMENT	29
BYNUM VOLUNTEER FIRE DEPARTMENT	5
BYRAM FIRE DEPARTMENT	39
BYRAM VOLUNTEER FIRE DEPARTMENT	4
BYWY VOLUNTEER FIRE DEPARTMENT/CHOCTAW COUNTY	1
CALEDONIA FIRE DEPARTMENT/LOWNDES COUNTY DISTRICT 1	6
CALHOUN CITY VOLUNTEER FIRE DEPARTMENT	3
CALHOUN COUNTY SHERIFF'S DEPARTMENT	1
CALHOUN VOLUNTEER FIRE DEPARTMENT	12
CANADIAN NATIONAL RAILWAY	1
CANNONSBURG/CHURCH HILL VOLUNTEER FIRE DEPARTMENT	2
CANTON FIRE DEPARTMENT	23
CARNES VOLUNTEER FIRE DEPARTMENT	1
CARRIERE VOLUNTEER FIRE DEPARTMENT	18
CARTHAGE FIRE DEPARTMENT	18
CASCILLA VOLUNTEER FIRE DEPARTMENT	1
CASON VOLUNTEER FIRE DEPARTMENT	12
CATO VOLUNTEER FIRE DEPARTMENT	1
CAYCE VOLUNTEER FIRE DEPARTMENT	8
CENTER VOLUNTEER FIRE DEPARTMENT/UNION COUNTY	3
CENTRAL GEORGE COUNTY VOLUNTEER FIRE DEPARTMENT	1
CENTRAL JACKSON COUNTY FIRE DEPARTMENT	11
CENTRAL JASPER COUNTY VOLUNTEER FIRE DEPARTMENT	3



## 2020 PARTICIPATION REPORT BY ORGANIZATION (Cont.)

Organization Name	Student Count
CENTRAL LAMAR COUNTY FIRE DEPARTMENT	3
CENTRAL OKTIBBEHA /LONGVIEW FIRE DEPARTMENT	13
CENTREVILLE VOLUNTEER FIRE DEPARTMENT	1
CHARLESTON VOLUNTEER FIRE DEPARTMENT	3
CHICKEN BONE FIRE DEPARTMENT	6
CHOCTAW COUNTY FIRE COORDINATOR	1
CHOCTAW FIRE DEPARTMENT	31
CHUNKY VOLUNTEER FIRE DEPARTMENT	2
CLAIBORNE COUNTY FIRE DEPARTMENT	21
CLAIBORNE COUNTY/HERMANVILLE FIRE DEPARTMENT	3
CLAIBORNE COUNTY SHERIFF'S DEPARTMENT	1
CLARKDALE VOLUNTEER FIRE DEPARTMENT	2
CLARKE COUNTY EMERGENCY MANAGEMENT AGENCY	2
CLARKE COUNTY FIRE COORDINATOR	1
CLARKE COUNTY FIRE SERVICE	17
CLARKEDALE VOLUNTEER FIRE DEPARTMENT	3
CLARKSDALE FIRE DEPARTMENT	41
CLEAR SPRINGS VOLUNTEER FIRE DEPARTMENT	5
CLEARY VOLUNTEER FIRE DEPARTMENT	7
CLEVELAND FIRE DEPARTMENT	18
CLINTON FIRE DEPARTMENT	60
COAHOMA COUNTY FIRE DEPARTMENT	39
COAHOMA COUNTY SHERIFF'S DEPARTMENT	7
COFFEEVILLE VOLUNTEER FIRE DEPARTMENT	2
COLDWATER VOLUNTEER FIRE DEPARTMENT	1
COLES POINT VOLUNTEER FIRE DEPARTMENT	10
COLLINS FIRE DEPARTMENT	11
COLLINSVILLE VOLUNTEER FIRE DEPARTMENT	5
COLUMBIA FIRE DEPARTMENT	21
COLUMBUS FIRE DEPARTMENT	29
COPIAH COUNTY EMERGENCY MANAGEMENT	4
CORINTH FIRE DEPARTMENT	158
COUNTY LINE VOLUNTEER FIRE DEPARTMENT	1
COURTLAND VOLUNTEER FIRE DEPARTMENT	7
COVINGTON COUNTY FIRE TRAINING OFFICER	1
CRAWFORD FIRE DEPARTMENT/LOWNDES COUNTY DISTRICT 4	2
CROSSROADS VOLUNTEER FIRE DEPARTMENT/HINDS COUNTY	5
CUEVAS VOLUNTEER FIRE DEPARTMENT	3
CULKIN VOLUNTEER FIRE DEPARTMENT	16
D'IBERVILLE FIRE DEPARTMENT	42
DAMASCUS FIRE DEPARTMENT	5
DECATUR VOLUNTEER FIRE DEPARTMENT	5
DEKALB VOLUNTEER FIRE DEPARTMENT	1



## 2020 PARTICIPATION REPORT BY ORGANIZATION (Cont.)

Organization Name	Student Count
DENNIS VOLUNTEER FIRE DEPARTMENT	4
DERBY-WHITESANDS VOLUNTEER FIRE DEPARTMENT	5
DERMA VOLUNTEER FIRE DEPARTMENT	2
DESOTO COUNTY EMERGENCY SERVICES	7
DIAMONDHEAD FIRE DEPARTMENT	27
DISTRICT 3 VOLUNTEER FIRE DEPARTMENT LOWNDES COUNTY	6
DIXIE VOLUNTEER FIRE DEPARTMENT	6
DIXON VOLUNTEER FIRE DEPARTMENT	1
DOTHAN REGIONAL AIRPORT FIRE DEPARTMENT	8
DREW VOLUNTEER FIRE DEPARTMENT	6
DRY CREEK FIRE AND RESCUE	6
DRY CREEK VOLUNTEER FIRE DEPARTMENT	1
DUCK HILL VOLUNTEER FIRE DEPARTMENT	1
DUMAS VOLUNTEER FIRE DEPARTMENT	1
E. CENTRAL/E. FORK FIRE DEPARTMENT	1
E. NESHOPA VOLUNTEER FIRE DEPARTMENT	4
E. OKTIBBEHA COUNTY FIRE DEPARTMENT	15
E. QUITMAN VOLUNTEER FIRE DEPARTMENT	16
E. UNION VOLUNTEER FIRE DEPARTMENT	1
E. WINSTON COUNTY VOLUNTEER FIRE DEPARTMENT	2
EAGLE LAKE VOLUNTEER FIRE DEPARTMENT	1
EDEN VOLUNTEER FIRE DEPARTMENT	1
EDINBURG VOLUNTEER FIRE DEPARTMENT	6
ELLIOTT VOLUNTEER FIRE DEPARTMENT	5
ELLISVILLE FIRE DEPARTMENT	1
ENHANCED ENVIRONMENTAL (E3)	21
ENID VOLUNTEER FIRE DEPARTMENT	3
ENON VOLUNTEER FIRE DEPARTMENT	2
ERGON REFINING, INC.	23
ESCATAWPA VOLUNTEER FIRE DEPARTMENT	3
EUDORA VOLUNTEER FIRE DEPARTMENT	18
EUPORA VOLUNTEER FIRE DEPARTMENT	1
EVERGREEN FIRE PROTECTION DISTRICT	1
EVERGREEN-CAROLINA VOLUNTEER FIRE DEPARTMENT	4
EXXON-BATON ROUGE REFINERY	16
EXXON-BAYTOWN, TX REFINERY/CHEMICAL PLANT	18
FAIRHAVEN VOLUNTEER FIRE DEPARTMENT	6
FARMINGTON VOLUNTEER FIRE DEPARTMENT	13
FAYETTE VOLUNTEER FIRE DEPARTMENT	9
FENTON VOLUNTEER FIRE DEPARTMENT	7
FERNWOOD VOLUNTEER FIRE DEPARTMENT	1
FIRST CHEMICAL CORPORATION	35
FISHER FERRY VOLUNTEER FIRE DEPARTMENT	18





## 2020 PARTICIPATION REPORT BY ORGANIZATION (Cont.)

Organization Name	Student Count
FLOWOOD FIRE DEPARTMENT	44
FLOWOOD POLICE DEPARTMENT	2
FOREST FIRE DEPARTMENT	1
FORREST COUNTY FIRE SERVICES	1
FORREST COUNTY FIRE TRAINING OFFICER	1
FOSTER MOUND VOLUNTEER FIRE DEPARTMENT	7
FOXWORTH VOLUNTEER FIRE DEPARTMENT	19
FRIENDSHIP VOLUNTEER FIRE DEPARTMENT	2
FULTON FIRE DEPARTMENT	61
GAUTIER FIRE DEPARTMENT	41
GEESLIN CORNER VOLUNTEER FIRE DEPARTMENT	7
GIBBSTOWN/LAWRENCE VOLUNTEER FIRE DEPARTMENT	1
GLEN VOLUNTEER FIRE DEPARTMENT	1
GLOSTER FIRE DEPARTMENT/AMITE COUNTY	2
GLOSTER VOLUNTEER FIRE DEPARTMENT/AMITE COUNTY	1
GLUCKSTADT FIRE PROTECTION DISTRICT	23
GOLDEN TRIANGLE REGIONAL AIRPORT/BAPTIST MEMORIAL	6
GORE SPRINGS VOLUNTEER FIRE DEPARTMENT	6
GRAND GULF NUCLEAR STATION	79
GREENFIELD VOLUNTEER FIRE DEPARTMENT	2
GREENLEAF VOLUNTEER FIRE DEPARTMENT	13
GREENVILLE FIRE DEPARTMENT	90
GREENVILLE MID-DELTA AIRPORT	5
GREENWOOD FIRE DEPARTMENT	41
GRENADA COUNTY SHERIFF'S DEPARTMENT	1
GRENADA FIRE DEPARTMENT	41
GULF PARK ESTATES/ST. ANDREWS FIRE DISTRICT	19
GULFPORT FIRE DEPARTMENT	228
GUNTOWN VOLUNTEER FIRE DEPARTMENT	7
HANCOCK COUNTY EMERGENCY MANAGEMENT	1
HARMONY VOLUNTEER FIRE DEPARTMENT	5
HARMONY/CENTRAL VOLUNTEER FIRE DEPARTMENT	1
HARRISON COUNTY FIRE SERVICE	32
HARRISVILLE VOLUNTEER FIRE DEPARTMENT	12
HATLEY VOLUNTEER FIRE DEPARTMENT	4
HATTIESBURG FIRE DEPARTMENT	118
HATTIESBURG/LAUREL REGIONAL AIRPORT AUTHORITY	4
HEBRON VOLUNTEER FIRE DEPARTMENT	17
HEIDELBERG VOLUNTEER FIRE DEPARTMENT	2
HENLEYFIELD VOLUNTEER FIRE DEPARTMENT	3
HERNANDO FIRE DEPARTMENT	24
HICKORY FLAT VOLUNTEER FIRE DEPARTMENT	7
HICKORY GROVE VOLUNTEER FIRE DEPARTMENT/LAMAR COUNTY	2



## 2020 PARTICIPATION REPORT BY ORGANIZATION (Cont.)

Organization Name	Student Count
HICKORY VOLUNTEER FIRE DEPARTMENT/NEWTON COUNTY	4
HIGH POINT VOLUNTEER FIRE DEPARTMENT	3
HINDS COUNTY EMERGENCY MANAGEMENT	3
HOLLY BLUFF VOLUNTEER FIRE DEPARTMENT	1
HOLLY SPRINGS FIRE DEPARTMENT	51
HOLTSPUR VOLUNTEER FIRE DEPARTMENT	2
HOPE VOLUNTEER FIRE DEPARTMENT	1
HOPEWELL/CLARKE COUNTY VOLUNTEER FIRE DEPARTMENT	6
HORN LAKE FIRE DEPARTMENT	30
HOT COFFEE VOLUNTEER FIRE DEPARTMENT	3
HOULKA VOLUNTEER FIRE DEPARTMENT	5
HOUSE VOLUNTEER FIRE DEPARTMENT	4
HOUSTON COMMUNITY/DISTRICT 2 FIRE DEPARTMENT	4
HOUSTON FIRE DEPARTMENT	7
HUNT SOUTHLAND REFINING COMPANY	28
HUNTINGTON INGALLS INC	1
HWY 84 WEST VOLUNTEER FIRE DEPARTMENT	2
INDEPENDENCE VOLUNTEER FIRE DEPARTMENT	18
INDIAN MOUND VOLUNTEER FIRE DEPARTMENT	3
INDIANOLA FIRE DEPARTMENT	14
INDIANOLA VOLUNTEER FIRE DEPARTMENT	9
INGOMAR VOLUNTEER FIRE DEPARTMENT	6
INTERNATIONAL PAPER COMPANY-VICKSBURG MILL	27
INVERNESS VOLUNTEER FIRE DEPARTMENT	1
ITAWAMBA COUNTY SHERIFF'S DEPARTMENT	1
ITTA BENA VOLUNTEER FIRE DEPARTMENT	9
IUKA FIRE DEPARTMENT	10
JACINTO VOLUNTEER FIRE DEPARTMENT	1
JACKSON COUNTY FIRE COORDINATOR	5
JACKSON COUNTY FIRE DISTRICT	90
JACKSON COUNTY SHERIFF'S DEPARTMENT	1
JACKSON FIRE DEPARTMENT	166
JANICE VOLUNTEER FIRE DEPARTMENT	12
JASPER COUNTY SHERIFF'S DEPARTMENT	1
JEFFERSON COUNTY FIRE COORDINATOR	2
JEFFERSON COUNTY FIRE SERVICES	6
JEFFERSON PARISH EASTBANK CONSOLIDATED FIRE DEPARTMENT	1
JOHNSON VOLUNTEER FIRE DEPARTMENT	3
JONES COUNTY SHERIFF'S DEPARTMENT	1
KINGSTON VOLUNTEER FIRE DEPARTMENT	19
KOSCIUSKO FIRE DEPARTMENT	1
KOSSUTH VOLUNTEER FIRE DEPARTMENT	4
LAFAYETTE COUNTY FIRE DEPARTMENT	52



## 2020 PARTICIPATION REPORT BY ORGANIZATION (Cont.)

Organization Name	Student Count
LAFAYETTE COUNTY FIRE TRAINING OFFICER	1
LAFAYETTE COUNTY SHERIFF'S DEPARTMENT	1
LAKE EDDINS VOLUNTEER FIRE DEPARTMENT	8
LAKE HARBOR VOLUNTEER FIRE DEPARTMENT	26
LAKE MONTROSE VOLUNTEER FIRE DEPARTMENT	10
LAKE VOLUNTEER FIRE DEPARTMENT/SCOTT COUNTY	8
LAMAR COUNTY EMERGENCY MANAGEMENT AGENCY	1
LAMAR COUNTY FIRE SERVICES	2
LAMAR COUNTY SHERIFF'S DEPARTMENT	1
LAMBERT VOLUNTEER FIRE DEPARTMENT	2
LANGFORD VOLUNTEER FIRE DEPARTMENT	21
LAUDERDALE COUNTY FIRE SERVICES	10
LAUDERDALE VOLUNTEER FIRE DEPARTMENT	1
LAUREL FIRE DEPARTMENT	36
LAWRENCE COUNTY FIRE SERVICES	9
LEAKE COUNTY FIRE COORDINATOR	3
LEARNED VOLUNTEER FIRE DEPARTMENT	3
LEE COUNTY SHERIFF'S DEPARTMENT	1
LEESBURG VOLUNTEER FIRE DEPARTMENT	12
LELAND FIRE DEPARTMENT	2
LENA VOLUNTEER FIRE DEPARTMENT	5
LETOURNEAU COMMUNITY FIRE DEPARTMENT	4
LEXIE VOLUNTEER FIRE DEPARTMENT	8
LIBERTY ROAD VOLUNTEER FIRE DEPARTMENT/ADAMS COUNTY	4
LIBERTY VOLUNTEER FIRE DEPARTMENT/AMITE COUNTY	7
LIBERTY VOLUNTEER FIRE DEPARTMENT/SCOTT COUNTY	1
LINWOOD VOLUNTEER FIRE DEPARTMENT	2
LIZANA VOLUNTEER FIRE DEPARTMENT	2
LONE STAR VOLUNTEER FIRE DEPARTMENT	8
LONG BEACH FIRE DEPARTMENT	56
LONG CREEK VOLUNTEER FIRE DEPARTMENT	3
LONGINO CENTRAL VOLUNTEER FIRE DEPARTMENT	9
LONGTOWN VOLUNTEER FIRE DEPARTMENT	6
LOOXAHOMA VOLUNTEER FIRE DEPARTMENT	17
LORMAN VOLUNTEER FIRE DEPARTMENT	2
LOUIN VOLUNTEER FIRE DEPARTMENT	4
LOUISVILLE FIRE DEPARTMENT	8
LOVE VOLUNTEER FIRE DEPARTMENT	27
LOWNDES COUNTY DISTRICT 5/ARTESIA FIRE DEPARTMENT	3
LSR VOLUNTEER FIRE DEPARTMENT/SUNFLOWER COUNTY	3
LUCEDALE FIRE DEPARTMENT	2
LUMBERTON VOLUNTEER FIRE DEPARTMENT	8
MABEN VOLUNTEER FIRE DEPARTMENT	1



## 2020 PARTICIPATION REPORT BY ORGANIZATION (Cont.)

Organization Name	Student Count
MACEDONIA VOLUNTEER FIRE DEPARTMENT	2
MACON VOLUNTEER FIRE DEPARTMENT	22
MADDEN VOLUNTEER FIRE DEPARTMENT	1
MADISON COUNTY FIRE COORDINATOR	1
MADISON FIRE DEPARTMENT	34
MAGEE FIRE DEPARTMENT	37
MAGNOLIA VOLUNTEER FIRE DEPARTMENT/PIKE COUNTY	4
MAGNOLIA VOLUNTEER FIRE DEPARTMENT/STONE COUNTY	6
MARION VOLUNTEER FIRE & RESCUE	2
MARKS VOLUNTEER FIRE DEPARTMENT	5
MARSHALL COUNTY SHERIFF'S DEPARTMENT	1
MARTIN VOLUNTEER FIRE DEPARTMENT	2
MARYDELL/BARNES VOLUNTEER FIRE DEPARTMENT	5
MCCOMB FIRE DEPARTMENT	43
MCHENRY VOLUNTEER FIRE DEPARTMENT	9
MCLAURIN VOLUNTEER FIRE DEPARTMENT	5
MCNEILL VOLUNTEER FIRE DEPARTMENT	1
MEMA	5
MEMPHIS, TN FIRE DEPARTMENT	71
MENDENHALL VOLUNTEER FIRE DEPARTMENT	23
MERIDIAN FIRE DEPARTMENT	49
MIDWAY VOLUNTEER FIRE DEPARTMENT/YAZOO COUNTY	4
MITCHELL VOLUNTEER FIRE DEPARTMENT	4
MIZE VOLUNTEER FIRE DEPARTMENT	1
MONEY VOLUNTEER FIRE DEPARTMENT	14
MONROE FIRE DEPARTMENT	18
MONTEREY VOLUNTEER FIRE DEPARTMENT	16
MONTICELLO FIRE DEPARTMENT	4
MONTROSE VOLUNTEER FIRE DEPARTMENT	2
MOOREVILLE EGGVILLE VOLUNTEER FIRE DEPARTMENT	56
MOOREVILLE VOLUNTEER FIRE DEPARTMENT	2
MOORHEAD VOLUNTEER FIRE DEPARTMENT	1
MORGAN CITY VOLUNTEER FIRE DEPARTMENT	3
MORTON VOLUNTEER FIRE DEPARTMENT	3
MOSELLE VOLUNTEER FIRE DEPARTMENT	7
MOSS POINT FIRE DEPARTMENT	21
MOSSVILLE VOLUNTEER FIRE DEPARTMENT	5
MOUNT OLIVE VOLUNTEER FIRE DEPARTMENT	9
MS ANG/AIRPORT FIRE DEPARTMENT 172ND CES	47
MS BUREAU OF NARCOTICS	14
MS DEPARTMENT OF EDUCATION	3
MS DEPARTMENT OF HEALTH	1
MS INSTITUTIONS OF HIGHER LEARNING	1





**2020 PARTICIPATION REPORT BY ORGANIZATION (Cont.)**

Organization Name	Student Count
MS MILITARY DEPARTMENT/MS NATIONAL GUARD	1
MS STATE GUARD	15
MS STATE PENITENTIARY/PARCHMAN FIRE DEPARTMENT	8
MS STATE UNIVERSITY	11
MT. NEBO FIRE DEPARTMENT/KEMPER COUNTY DISTRICT 5	1
MT. OLIVET VOLUNTEER FIRE DEPARTMENT	7
MT. PISGAH VOLUNTEER FIRE DEPARTMENT/GREENE COUNTY	1
MT. SALEM VOLUNTEER FIRE DEPARTMENT	1
MURPHREESBORO VOLUNTEER FIRE DEPARTMENT	1
MYRICK & MILL CREEK FIRE DEPARTMENT	8
MYRTLE VOLUNTEER FIRE DEPARTMENT	1
N. CENTRAL SCOTT COUNTY/MIDWAY VOLUNTEER FIRE DEPARTMENT	5
N. BENTON COUNTY VOLUNTEER FIRE DEPARTMENT	1
N. CARROLLTON FIRE DEPARTMENT	9
N. CENTRAL AMITE COUNTY VOLUNTEER FIRE DEPARTMENT	2
N. FORREST COUNTY VOLUNTEER FIRE DEPARTMENT	18
N. E. ITAWAMBA/FAIRVIEW FIRE DEPARTMENT	7
N. E. LAMAR VOLUNTEER FIRE DEPARTMENT	16
N. E. LAUDERDALE VOLUNTEER FIRE DEPARTMENT	3
N. E. PEARL RIVER COUNTY FIRE DEPARTMENT	3
N. E. UNION FIRE DEPARTMENT	2
N. E. WARREN COUNTY VOLUNTEER FIRE DEPARTMENT	6
N. W. COVINGTON VOLUNTEER FIRE DEPARTMENT	2
N. W. LOWNDES/DISTRICT 2 FIRE DEPARTMENT	8
NANIH WAIYA VOLUNTEER FIRE DEPARTMENT	2
NASA STENNIS SPACE CENTER FIRE DEPARTMENT	2
NATCHEZ FIRE DEPARTMENT	31
NATCHEZ-ADAMS COUNTY AIRPORT	7
NAVAL AIR STATION/NEW ORLEANS/FIRE	1
NESBIT VOLUNTEER FIRE DEPARTMENT	14
NETTLETON VOLUNTEER FIRE DEPARTMENT	5
NEW ALBANY FIRE DEPARTMENT	93
NEW AUGUSTA VOLUNTEER FIRE DEPARTMENT	6
NEW HEBRON VOLUNTEER FIRE/RESCUE	5
NEW HOPE VOLUNTEER FIRE DEPARTMENT/KEMPER COUNTY	2
NEW ORLEANS FIRE DEPARTMENT	1
NEWTON COUNTY EMERGENCY MANAGEMENT	2
NEWTON COUNTY FIRE SERVICES	1
NEWTON FIRE DEPARTMENT	10
NICHOLSON VOLUNTEER FIRE DEPARTMENT	2
NORTH BEND VOLUNTEER FIRE DEPARTMENT	2
NORTH OKALOOSA FIRE DISTRICT	1
NORTH TUNICA COUNTY FIRE PROTECTION DISTRICT	4



**2020 PARTICIPATION REPORT BY ORGANIZATION (Cont.)**

Organization Name	Student Count
NORTH TUNICA FIRE GRADING DISTRICT	23
NORTHEAST FIRE DEPARTMENT/JACKSON COUNTY	22
NORTHWEST JACKSON COUNTY VOLUNTEER FIRE DEPARTMENT	30
NOURYON	18
NOXUBEE COUNTY EMR	8
NOXUBEE COUNTY EMERGENCY MANAGEMENT	1
NOXUBEE COUNTY FIRE COORDINATOR	2
O'TUCKOLOFA VOLUNTEER FIRE DEPARTMENT	2
OAK BOWERY VOLUNTEER FIRE DEPARTMENT	3
OAK GROVE VOLUNTEER FIRE DEPARTMENT/WALTHALL COUNTY	4
OAK GROVE/BEAT 4 LAMAR COUNTY FIRE DEPARTMENT	6
OCEAN SPRINGS FIRE DEPARTMENT	122
OFAHOMA VOLUNTEER FIRE DEPARTMENT	1
OKOLONA FIRE DEPARTMENT	15
OKTIBBEHA COUNTY DISTRICT 5 FIRE DEPARTMENT	10
OKTIBBEHA COUNTY FIRE COORDINATOR	1
OLD PEARL VOLUNTEER FIRE DEPARTMENT	5
OLIVE BRANCH FIRE DEPARTMENT	36
OLOH VOLUNTEER FIRE DEPARTMENT	2
OVETT VOLUNTEER FIRE DEPARTMENT	9
OXFORD FIRE DEPARTMENT	71
PACHUTA VOLUNTEER FIRE DEPARTMENT	13
PADEN VOLUNTEER FIRE DEPARTMENT	5
PADUCAH WELLS VOLUNTEER FIRE DEPARTMENT	2
PANOLA COUNTY CIVIL DEFENSE	2
PANOLA COUNTY FIRE COORDINATOR	2
PASCAGOULA FIRE DEPARTMENT	29
PASS CHRISTIAN FIRE DEPARTMENT	46
PASS CHRISTIAN FIRE DEPARTMENT STATION 1	1
PATTISON VOLUNTEER FIRE DEPARTMENT	5
PAYNES VOLUNTEER FIRE DEPARTMENT	2
PEARL FIRE DEPARTMENT	72
PEARL RIVER COUNTY FIRE COORDINATOR	1
PELAHATCHIE VOLUNTEER FIRE DEPARTMENT	37
PETAL FIRE DEPARTMENT	21
PHILADELPHIA FIRE DEPARTMENT	16
PHILIPP VOLUNTEER FIRE DEPARTMENT	5
PHILLIPS 66 ALLIANCE REFINERY	2
PHILLIPSTON VOLUNTEER FIRE DEPARTMENT	2
PICAYUNE FIRE DEPARTMENT	28
PINE BURR VOLUNTEER FIRE DEPARTMENT	5
PINE GROVE VOLUNTEER FIRE DEPARTMENT	1
PINE RIDGE VOLUNTEER FIRE DEPARTMENT	7



## 2020 PARTICIPATION REPORT BY ORGANIZATION (Cont.)

Organization Name	Student Count
PINE VALLEY VOLUNTEER FIRE DEPARTMENT	3
PINEVILLE VOLUNTEER FIRE DEPARTMENT	1
PINOLA VOLUNTEER FIRE DEPARTMENT	18
PITTSBORO VOLUNTEER FIRE DEPARTMENT	5
PLEASANT GROVE VOLUNTEER FIRE DEPARTMENT/PANOLA COUNTY	3
POAGVILLE VOLUNTEER FIRE DEPARTMENT	5
POCAHONTAS VOLUNTEER FIRE DEPARTMENT	17
POLKVILLE VOLUNTEER FIRE DEPARTMENT	3
POPE VOLUNTEER FIRE DEPARTMENT	7
POPLARVILLE FIRE DEPARTMENT	21
PORT GIBSON FIRE DEPARTMENT	3
PORTERVILLE VOLUNTEER FIRE DEPARTMENT	4
POTTS CAMP VOLUNTEER FIRE DEPARTMENT	18
PRAIRIE POINT FIRE DEPARTMENT/NOXUBEE COUNTY DIST 1	5
PRENTISS VOLUNTEER FIRE DEPARTMENT	6
PRESTON FIRE DEPARTMENT/KEMPER COUNTY DISTRICT 4	2
PRO-TECH FIRE SERVICES LTD	6
PROGRESS VOLUNTEER FIRE DEPARTMENT/PIKE COUNTY	4
PUCKETT VOLUNTEER FIRE DEPARTMENT	24
PURVIS VOLUNTEER FIRE DEPARTMENT	14
QUITMAN VOLUNTEER FIRE DEPARTMENT	5
RALEIGH VOLUNTEER FIRE DEPARTMENT	2
RAMSEY SPRINGS VOLUNTEER FIRE DEPARTMENT	1
RANKIN COUNTY EOC	5
RAVINE VOLUNTEER FIRE DEPARTMENT	6
RAWLS SPRINGS VOLUNTEER FIRE DEPARTMENT	2
RAYMOND VOLUNTEER FIRE DEPARTMENT	3
RED BANKS FIRE DEPARTMENT	10
RED HILL VOLUNTEER FIRE DEPARTMENT	5
REGANTOWN VOLUNTEER FIRE DEPARTMENT	1
RESERVOIR FIRE PROTECTION DISTRICT	26
RHODES CHAPEL VOLUNTEER FIRE DEPARTMENT	2
RICHLAND FIRE DEPARTMENT	77
RICHLAND POLICE DEPARTMENT	1
RIDGELAND FIRE DEPARTMENT	58
RIDGELAND POLICE DEPARTMENT	2
RIPLEY VOLUNTEER FIRE DEPARTMENT	6
RIVERSIDE VOLUNTEER FIRE DISTRICT	12
ROBINHOOD VOLUNTEER FIRE DEPARTMENT	1
ROCK HILL VOLUNTEER FIRE DEPARTMENT	3
ROCKY CREEK VOLUNTEER FIRE DEPARTMENT	1
ROLLING FORK VOLUNTEER FIRE DEPARTMENT	16
ROSE HILL VOLUNTEER FIRE DEPARTMENT	1



## 2020 PARTICIPATION REPORT BY ORGANIZATION (Cont.)

Organization Name	Student Count
ROSEBLOOM VOLUNTEER FIRE DEPARTMENT	1
RULEVILLE VOLUNTEER FIRE DEPARTMENT	3
RUNNELSTOWN VOLUNTEER FIRE DEPARTMENT	3
RURAL HILL VOLUNTEER FIRE DEPARTMENT	2
RURAL METRO FIRE RESCUE/W. PALM BEACH	2
RURAL METRO FIRE DEPARTMENT/FED EX	17
RUSSUM VOLUNTEER FIRE DEPARTMENT	4
RYANS WELL VOLUNTEER FIRE DEPARTMENT	5
S. E. COVINGTON VOLUNTEER FIRE DEPARTMENT	2
S. E. LAMAR VOLUNTEER FIRE DEPARTMENT	17
S. E. UNION FIRE DEPARTMENT	7
S. JONES VOLUNTEER FIRE DEPARTMENT	5
S. LAUDERDALE VOLUNTEER FIRE DEPARTMENT	3
S. W. COVINGTON VOLUNTEER FIRE DEPARTMENT	1
S. W. JONES VOLUNTEER FIRE DEPARTMENT	1
S. W. LAMAR VOLUNTEER FIRE DEPARTMENT	12
SABOUGLA VOLUNTEER FIRE DEPARTMENT	3
SALTILLO FIRE DEPARTMENT	14
SANDERSVILLE VOLUNTEER FIRE DEPARTMENT	9
SARDIS LOWER LAKE FIRE DEPARTMENT	11
SARDIS VOLUNTEER FIRE DEPARTMENT	8
SCOOBA VOLUNTEER FIRE DEPARTMENT	1
SEBASTOPOL VOLUNTEER FIRE DEPARTMENT	15
SEMINARY VOLUNTEER FIRE DEPARTMENT	2
SENATOBIA FIRE DEPARTMENT	7
SHADY GROVE VOLUNTEER FIRE DEPARTMENT	14
SHANNON VOLUNTEER FIRE DEPARTMENT	2
SHARKEY HAMPTON VOLUNTEER FIRE DEPARTMENT	9
SHARON VOLUNTEER FIRE DEPARTMENT	5
SHELL PIPELINE COMPANY LP	14
SHELL ROAD VOLUNTEER FIRE DEPARTMENT	2
SHERMAN VOLUNTEER FIRE DEPARTMENT	19
SHILOH VOLUNTEER FIRE DEPARTMENT	3
SHIPMAN VOLUNTEER FIRE DEPARTMENT	1
SHUQUALAK VOLUNTEER FIRE DEPARTMENT	2
SILVER RUN VOLUNTEER FIRE DEPARTMENT	3
SIPSEY RIVER VOLUNTEER FIRE DEPARTMENT	3
SKUNA VALLEY VOLUNTEER FIRE DEPARTMENT	1
SLEDGE VOLUNTEER FIRE DEPARTMENT	2
SMITHDALE VOLUNTEER FIRE DEPARTMENT	2
SMITHVILLE VOLUNTEER FIRE DEPARTMENT	8
SNELL VOLUNTEER FIRE DEPARTMENT	1
SNOW LAKE VOLUNTEER FIRE DEPARTMENT	5





## 2020 PARTICIPATION REPORT BY ORGANIZATION (Cont.)

Organization Name	Student Count
SOSO VOLUNTEER FIRE DEPARTMENT	3
SOUTH MS CORRECTIONAL FACILITY	3
SOUTHAVEN FIRE DEPARTMENT	63
SOUTHEAST FIRE & RESCUE/STATION 1	4
SOUTHEAST PEARL RIVER VOLUNTEER FIRE DEPARTMENT	6
SOUTHWEST MARION VOLUNTEER FIRE DEPARTMENT	13
SOUTHWEST RANKIN VOLUNTEER FIRE DEPARTMENT	14
SPOUT SPRINGS VOLUNTEER FIRE DEPARTMENT	5
SPRINGHILL VOLUNTEER FIRE DEPARTMENT/TALLAHATCHIE COUNTY	1
ST. GEORGE FIRE PROTECTION DISTRICT	3
ST. TAMMANY, LA FIRE DISTRICT #1	7
ST. TAMMANY, LA FIRE DISTRICT #4	12
ST. TAMMANY, LA FIRE DISTRICT #12	1
STALLO VOLUNTEER FIRE DEPARTMENT	3
STAR VOLUNTEER FIRE DEPARTMENT	11
STARKVILLE FIRE DEPARTMENT	81
STATE FIRE ACADEMY	41
STATE FIRE MARSHAL'S OFFICE	8
STATE LINE VOLUNTEER FIRE DEPARTMENT	2
STEEP HOLLOW VOLUNTEER FIRE DEPARTMENT	9
STONEWALL VOLUNTEER FIRE DEPARTMENT	6
STREET VOLUNTEER FIRE DEPARTMENT	2
STRINGER VOLUNTEER FIRE DEPARTMENT	5
STUDENT/NOT WITH CODED DEPARTMENT	1
STURGIS/DISTRICT 4 VOLUNTEER FIRE DEPARTMENT	6
SUMMIT VOLUNTEER FIRE DEPARTMENT/PIKE COUNTY	16
SUMNER VOLUNTEER FIRE DEPARTMENT/TALLAHATCHIE COUNTY	8
SUMRALL VOLUNTEER FIRE DEPARTMENT	2
SUNFLOWER VOLUNTEER FIRE DEPARTMENT	1
SUNNYHILL VOLUNTEER FIRE DEPARTMENT	6
SUNRISE VOLUNTEER FIRE DEPARTMENT	5
SUQUALENA VOLUNTEER FIRE DEPARTMENT	5
SYLVARENA VOLUNTEER FIRE DEPARTMENT/SMITH COUNTY	1
SYLVARENA VOLUNTEER FIRE DEPARTMENT/YALOBUSHA COUNTY	3
TASK FORCE 1 - MISSISSIPPI	10
TASK FORCE 2 - MISSISSIPPI	3
TASK FORCE 3 - MISSISSIPPI	9
TATE COUNTY DISTRICT 1 FIRE DEPARTMENT	29
TATE COUNTY FIRE COORDINATOR	2
TATE COUNTY SHERIFF'S DEPARTMENT	1
TAYLORSVILLE VOLUNTEER FIRE DEPARTMENT	2
TERRY VOLUNTEER FIRE DEPARTMENT	3
THE CHEMOURS COMPANY	44



## 2020 PARTICIPATION REPORT BY ORGANIZATION (Cont.)

Organization Name	Student Count
THEADVILLE VOLUNTEER FIRE DEPARTMENT	5
THORN VOLUNTEER FIRE DEPARTMENT	6
THREE MILE CORNER VOLUNTEER FIRE DEPARTMENT	4
TIE PLANT VOLUNTEER FIRE DEPARTMENT	11
TILDEN-NEW SALEM FIRE DEPARTMENT	12
TISHOMINGO COUNTY SHERIFF'S DEPARTMENT	1
TOOMSUBA VOLUNTEER FIRE DEPARTMENT	1
TRI-COMMUNITY VOLUNTEER FIRE DEPARTMENT/MARION COUNTY	40
TRI-COMMUNITY VOLUNTEER FIRE DEPARTMENT/YAZOO COUNTY	5
TUCKER VOLUNTEER FIRE DEPARTMENT	2
TUNICA COUNTY SHERIFF'S DEPARTMENT	1
TUNICA VOLUNTEER FIRE DEPARTMENT	30
TUPELO AIRPORT AUTHORITY	2
TUPELO FIRE DEPARTMENT	146
TWIN CREEK VOLUNTEER FIRE DEPARTMENT	2
TYLERTOWN VOLUNTEER FIRE DEPARTMENT	2
TYONEK NATIVE CORPORATION	1
U. S. ENVIRONMENTAL SERVICES	1
U.S. ARMY CORPS OF ENGINEERS	1
UNCODED DEPARTMENT OR INDUSTRY	5
UNION CENTER/THEO VOLUNTEER FIRE DEPARTMENT	12
UNION COUNTY SHERIFF'S DEPARTMENT	3
UNION VOLUNTEER FIRE DEPARTMENT/JONES COUNTY	3
UNION VOLUNTEER FIRE DEPARTMENT/NEWTON COUNTY	1
UNION VOLUNTEER FIRE DEPARTMENT/PANOLA COUNTY	3
UNIVERSITY OF MS MEDICAL CENTER	3
UTICA VOLUNTEER FIRE DEPARTMENT	2
VAIDEN VOLUNTEER FIRE DEPARTMENT	1
VAN FLEET VOLUNTEER FIRE DEPARTMENT	2
VAUGHN VOLUNTEER FIRE DEPARTMENT	2
VELMA VOLUNTEER FIRE DEPARTMENT	9
VERONA FIRE DEPARTMENT	2
VICKSBURG FIRE DEPARTMENT	68
VICKSBURG POLICE DEPARTMENT	1
VICKSBURG-WARREN 911	1
VICTORIA FIRE DEPARTMENT	9
W. R. GRACE REFINERY	24
WALLS FIRE DEPARTMENT	33
WALNUT VOLUNTEER FIRE DEPARTMENT	10
WALTERS VOLUNTEER FIRE DEPARTMENT	5
WALTHALL COUNTY 4TH DIST VOLUNTEER FIRE DEPARTMENT	3
WALTHALL COUNTY SHERIFF'S DEPARTMENT	1
WARD VOLUNTEER FIRE DEPARTMENT	1



2020 PARTICIPATION REPORT BY ORGANIZATION (Cont.)

Organization Name	Student Count
WARREN COUNTY FIRE COORDINATOR	1
WARREN COUNTY FIRE SERVICE	25
WARREN COUNTY SHERIFF'S DEPARTMENT	6
WASHINGTON COUNTY EMERGENCY MANAGEMENT	1
WATER VALLEY FIRE DEPARTMENT	13
WATERFORD VOLUNTEER FIRE DEPARTMENT	3
WATSON VOLUNTEER FIRE DEPARTMENT	14
WAVELAND FIRE DEPARTMENT	3
WAYNE COUNTY CENTRAL FIRE STATION	13
WAYNESBORO FIRE DEPARTMENT	2
WEST COVINGTON VOLUNTEER FIRE DEPARTMENT	2
WEST POINT FIRE DEPARTMENT	7
WHEELER FRANKSTOWN VOLUNTEER FIRE DEPARTMENT	6
WIGGINS FIRE DEPARTMENT	10
WINONA FIRE DEPARTMENT	3
WINSTON COUNTY FIRE COORDINATOR	1
WOODLAND VOLUNTEER FIRE DEPARTMENT	3
WOODVILLE VOLUNTEER FIRE DEPARTMENT	1
WYATTE-CHULAHOMA VOLUNTEER FIRE DEPARTMENT/TATE CTY	3
YAZOO CITY FIRE DEPARTMENT	22
YAZOO COUNTY DISTRICT 3 VOLUNTEER FIRE DEPARTMENT	6
YAZOO COUNTY FIRE COORDINATOR	1
YAZOO MS DELTA LEVEE BOARD	1





“Making A  
Difference  
When It Matters  
The Most”

